

**Corrigendum 1 Dated 29/07/2024**  
**CPC Tender No. BHEL/CPC/TLB/ENB/25/022**

**Work Description:** DESIGN, MANUFACTURING, SUPPLY, RECEIPT AT SITE, ERECTION, PAINTING & FINISHING WORKS ETC. AND HANDING OVER TO SITE REMOVABLE/ RE-ERECTABLE TYPE PRE-ENGINEERED, PRE- FABRICATED STEEL CLOSED STORAGE SHEDS (6 NOS.),STORE-IN-CHARGE ROOM (2 NOS), OFFICE BUILDINGS (2 NOS.), & SAFETY PARK (1NOS.) INCLUDING CIVIL & ARCHITECTURAL WORKS COMPLETE IN ALL RESPECT AND HANDING OVER OF COMPLETE INFRASTRUCTURE FOR 3 X 800 MW NLC TALABIRA THERMAL POWER PROJECT,JHARSUGUDA,ODISHA, INDIA ( **PACKAGE- A:** IMMOVABLE MATERIAL **PACKAGE- B:** MOVABLE MATERIAL)

A) Some of the Bidders sought clarifications in regard to the published tender specification. The clarifications issued by BHEL are as below:

Sr. No.	Reference Page/Clause No	Bidders Query	Description in Existing TCC	BHEL's Reply
1	NIT Clause 1 (vii)	Request for EMD Exemption.	EMD Amount 5,00,000/-	Tender Condition shall Prevails
2	TCC Clause 2.1	In steel storage shed - 6 nos, how many Steel rack used and what will be the size? Please Explain.	A. Design, Manufacturing, Supply, Receipt at Site, Erection, Painting etc. and Handing over of Removable/Re-erectable type Pre-Engineered, Pre-fabricated Steel Closed Storage Sheds-6 Nos. with side racks for storage purpose etc. including execution of civil foundation. This also includes guarantee for 12 months of operations for the design performance, materials supplied & erection works	Tender conditions prevail. Side rack inside storage sheds shall be provided as per clause no. 2.1.10.3 of TCC
3	TCC Clause 2.2	Area for 1 no. Office 788 sqm and 1 no. Office 400 sqm + Common Toilet Block (2 nos.) area 69.02 sqm + EWC + WB (2.5m x 3.045m) (04 nos.) area 30.44 sqm + Portico (3m x 4m) (03 nos.) area 36 sqm + Septic Tank area 36 sqm (approx.) + water stand area 17.88 sqm, Total development Area is 1377.34 sqm and Drainage area Extra?	C. Design, Manufacturing, Supply, Receipt at Site, Erection & Finishing works etc. and Handing over to site Removable/ Re-erectable type Pre-Engineered, Pre- fabricated Office buildings- 2 nos. (1 no office with area 788 sqm and 1 no office with area 400 sqm) as per the technical specification. This also includes guarantee for 12 months of	Tender Condition shall Prevails

			operations for the design performance, materials supplied & erection works and workmanship for Civil construction	
4	TCC Clause 2.2	Explain any Fire System required for office and Parking Etc?	C. Design, Manufacturing, Supply, Receipt at Site, Erection & Finishing works etc. and Handing over to site Removable/ Re-erectable type Pre-Engineered, Pre- fabricated Office buildings- 2 nos. (1 no office with area 788 sqm and 1 no office with area 400 sqm) as per the technical specification. This also includes guarantee for 12 months of operations for the design performance, materials supplied & erection works and workmanship for Civil construction	Tender condition shall prevail. Refer clause no 3.1.1 (f) of chapter III Scope Matrix. Only Firefighting equipment like buckets, extinguishers etc. in the Bidder's Scope. Providing Fire hydrant system is not in bidder's scope.
5	TCC Clause 2.2.2	Total Nos of User required for Septic Tank Design, If Wall Tiles required for toilets And Pantry what will be the Height?	Design of prefabricated office buildings - 2 Site Offices of approx. area 788 sqm and 400 sqm as per the attached indicative layout, technical specifications and site conditions. Bidder to prepare following drawings required for the office building. · Super structure drawing for Office building/Toilet block · · · Civil foundation for Office building /Toilet block Structural and Civil foundation for water tank structure Septic tank layout/details	<b>Reply:</b>  <b>For Design Purpose Bidder may consider:-</b>  Approx 100 nos users for Office- 1 Approx 50 nos Users for Office-2. Wall tiles are not required for toilet/pantry.
6	TCC Clause 2.2.15.2	Is there any Soak Pit Requirement?	100 mm thick PCC (1:4:8) shall be provided for following: 2.2.15.2 1. Below RCC Footing of Columns. 2.	Tender Condition Shall Prevails. Offices & Safety park shall be provided with sewage connections along with

			Plinth Beam Base. 3. Internal Wall Foundations. 4. In the Base of Soak Pit Slab.	septic tank and soak pit as per requirement.
7	TCC Clause 2.3	Area of Safety Park 250 sqm + 2m Wide Verandah Area 65.1 sqm and Other open area Development is in contractor Scope?	D. Design, Manufacturing, Supply, Receipt at Site, Erection & Finishing works etc. and Handing over to site Removable/ Re-erectable type Pre-Engineered, Pre- fabricated Safety Park– 1 nos. approximate area 250 sqm at project Site including supply and installation of vertigo test structure. This also includes guarantee for 12 months of operations for the design performance, materials supplied & erection works and workmanship for Civil construction	Tender Condition shall prevail. Safety Park with 2 m wide verandah and the vertigo test structure along with associated civil works is in the scope of bidder.
8	NA	If possible please provide the contour survey report for Plot Leveling?	NA	<b>Contour Plan drawing no - 008/SUR/TALA/II &amp;III 2019 dtd. 1/07/2019 is enclosed with this corrigendum for reference.</b> Office location indicated in the plot plan is only tentative and the final location will be decided after award of work.
9	TCC Clause 3.1.2.a	Labour Colony is necessary for contractor?	Open space for labour colony, Contractor has to make his own arrangements for shelter and transportation of labours requirement.	Tender Condition Shall Prevails as per clause no 3.9.1
10	TCC Clause 2.1	Explain about RCC Drainage System for storage shed, Like size, length of Drainage and how for from main drainage line?	A. Design, Manufacturing, Supply, Receipt at Site, Erection, Painting etc. and Handing over of Removable/Re-erectable type Pre-Engineered, Pre-fabricated Steel Closed Storage Sheds-6 Nos. with side racks for storage purpose etc. including	TCC Clause no 2.1 modified as mentioned below: -  A. Design, Manufacturing, Supply, Receipt at Site, Erection, Painting etc. and Handing over of Removable/Re-erectable type Pre-Engineered, Pre-

			execution of civil foundation. This also includes guarantee for 12 months of operations for the design performance, materials supplied & erection works	fabricated Steel Closed Storage Sheds-6 Nos. with side racks for storage purpose etc. including execution of civil foundation. This also includes guarantee for 12 months of operations for the design performance, materials supplied & erection works. <b>Note:- Interconnecting drain (upto 5mtr length) between closed storage shed and garland drain shall be in the bidder's scope</b>
11	TCC Clause 2.1.12.2	Steel Store in charge Room, wall system Thickness of PUF 50 or 60 MM, top of paragraph 50 mm and at bottom of same paragraph 60 mm ?	Store in charge room shall be of 50 mm Thick PUF insulated sandwich panels. These panels are made out of 0.47mm thick colour coated G.I. Sheet as exterior on both sides with PU Foam of density 38 Kg/CuM and tensile strength of 4 Kg/Sq.CM inside, Compressive strength (10 % deformation) of 2.1 Kg/Sq.CM, Thermal conductivity at 10 Deg 0.02 W/M Deg k Temperature Range - 80 Deg C to + 100 Deg C The PU Foam thickness is 60 mm.	TCC Clause no 2.1.12.2 modified as mentioned below:  Store in charge room shall be of 50 mm Thick PUF insulated sandwich panels. These panels are made out of 0.47mm thick colour coated G.I. Sheet as exterior on both sides with PU Foam of density 38 Kg/CuM and tensile strength of 4 Kg/Sq.CM inside, Compressive strength (10 % deformation) of 2.1 Kg/Sq.CM, Thermal conductivity at 10 Deg 0.02 W/M Deg k Temperature Range - 80 Deg C to + 100 Deg C The PU Foam thickness is 50 mm."
12	TCC Clause 2.2	Explain about RCC Drainage System for office shed, Like size, length of Drainage and how far from main drainage line?	C. Design, Manufacturing, Supply, Receipt at Site, Erection & Finishing works etc. and Handing over to site Removable/ Re-erectable type Pre-Engineered, Pre- fabricated Office buildings- 2 nos. (1 no office with area 788 sqm and 1 no office with area 400 sqm) as per the technical	TCC Clause no 2.2 modified as mentioned below:  C. Design, Manufacturing, Supply, Receipt at Site, Erection & Finishing works etc. and Handing over to site Removable/ Re-erectable type Pre-Engineered, Pre- fabricated Office

			specification. This also includes guarantee for 12 months of operations for the design performance, materials supplied & erection works and workmanship for Civil construction	buildings- 2 nos. (1 no office with area 788 sqm and 1 no office with area 400 sqm) as per the technical specification. This also includes guarantee for 12 months of operations for the design performance, materials supplied & erection works and workmanship for Civil construction. <b>Note:-Interconnecting drain (upto 5mtr length) between office and garland drain shall be in the bidder's scope</b>
13	TCC Clause 2.2.29	Is ½ HP pump to store water in Overhead tank sufficient for 10,000 lts. and Explain about Boring for Water? Any Pump room required?	A separate structure shall be provided with steel sections to support 3 nos. 2000 litre water tank for 788 sqm area office and 2 nos. 2000 litre water tank for 400 sqm area office at a minimum height of 4m. The structure shall be designed with steel as per standard IS specification to withstand the water tank load and wind load in full & the legs of structure shall be suitably anchored to the ground. Supply and Fixing of Water Tank as approved by BHEL Engineer including inlet connection to Water Tank from the Existing nearby water supply line and further Distribution of water from the Water Tank to the Office Toilets, Pantry etc. using the GI / PVC Pipes of approved specifications and make, laying on surface/ recessed is also included in contractor's scope. Bidder to supply ½ HP pump to store water in Overhead tank.	TCC Clause no 2.2.29 modified as mentioned below:  A separate structure shall be provided with steel sections to support 3 nos. 2000 litre water tank for 788 sqm area office and 2 nos. 2000 litre water tank for 400 sqm area office at a minimum height of 4m. The structure shall be designed with steel as per standard IS specification to withstand the water tank load and wind load in full & the legs of structure shall be suitably anchored to the ground. Supply and Fixing of Water Tank as approved by BHEL Engineer including inlet connection to Water Tank from the Existing nearby water supply line and further Distribution of water from the Water Tank to the Office Toilets, Pantry etc. using the GI / PVC Pipes of approved specifications and make, laying on surface/ recessed is also

				included in contractor's scope. <b>Note:-</b> <b>Separate steel structures to support the water tanks for each Office building shall be provided by bidder. Bidder to supply 1 HP pump to store water for each Office. Also, horizontal Pump/s to be installed by the bidder having capacity to pump from the single point water source at a distance of 100 mtr from storage Tank Location and to create minimum head of 7 m.</b>
14	TCC Clause 2.2.18	In steel structure for roofing using the Truss, is Truss is necessary or Rafter will be used?	ROOF: Roof truss should be made up of anti-corrosive / enamel painted (as per IS:2932) 40mm square tubular section designed to suit roof structure with 0.47mm thick pre-coated profiled GI (i.e., PPGI) roof sheet fixed with fasteners/self-tapping screws including ridge covers, flashing, gutters, rainwater down pipes / spouts etc. all complete.	TCC Clause no 2.2.18 modified as mentioned below:  Roof truss should be made up of anti-corrosive / enamel painted (as per IS:2932) 40mm square tubular section designed to suit roof structure with 0.47mm thick pre-coated profiled GI (i.e., PPGI) roof sheet fixed with fasteners/self-tapping screws including ridge covers, flashing, gutters, rainwater down pipes / spouts etc. all complete. <b>Roof structure can be supported on Roof truss or on rafter as per the approved design.</b>
15	TCC Clause 2.3.25	Explain about Boring & Pump Size or any Pump Room required?	A separate structure shall be provided with steel sections to support 1 no. 2000 litre water tank at a minimum height of 4m. The structure shall be designed with steel as per standard IS specification to withstand the water tank load and wind load in full & the	TCC Clause no 2.3.25 modified as mentioned below:  A separate structure shall be provided with steel sections to support 3 nos. 2000 litre water tank for 788 sqm area office and 2 nos. 2000 litre water tank

			<p>legs of structure shall be suitably anchored to the ground. Supply and Fixing of Water Tank as approved by BHEL Engineer including inlet connection to Water Tank from the Existing nearby water supply line and further Distribution of water from the Water Tank to the Toilets, Pantry etc. using the GI / PVC Pipes of approved specifications and make, laying on surface/ recessed is also included in contractor's scope. Bidder to supply ½ HP pump to store water in Overhead tank.</p>	<p>for 400 sqm area office at a minimum height of 4m. The structure shall be designed with steel as per standard IS specification to withstand the water tank load and wind load in full &amp; the legs of structure shall be suitably anchored to the ground. Supply and Fixing of Water Tank as approved by BHEL Engineer including inlet connection to Water Tank from the Existing nearby water supply line and further Distribution of water from the Water Tank to the Office Toilets, Pantry etc. using the GI / PVC Pipes of approved specifications and make, laying on surface/ recessed is also included in contractor's scope.</p> <p><b>Note:-</b> <b>Separate steel structures to support the water tanks for each Office building shall be provided by bidder. Bidder to supply 1 HP pump to store water for each Office. Also, horizontal Pump/s to be installed by the bidder having capacity to pump from the single point water source at a distance of 100 mtr from storage Tank Location and to create minimum head of 7 m.</b></p>
16	TCC Clause 2.3	Explain about RCC Drainage System for Safety Park, Like size, length of Drainage and how for from main drainage line?	<p>D. Design, Manufacturing, Supply, Receipt at Site, Erection &amp; Finishing works etc. and Handing over to site Removable/ Re-erectable type Pre-Engineered, Pre- fabricated Safety Park– 1 nos. approximate area 250</p>	<p>TCC Clause no 2.3 modified as mentioned below: D. Design, Manufacturing, Supply, Receipt at Site, Erection &amp; Finishing works etc. and Handing over to site Removable/ Re-erectable type Pre-</p>

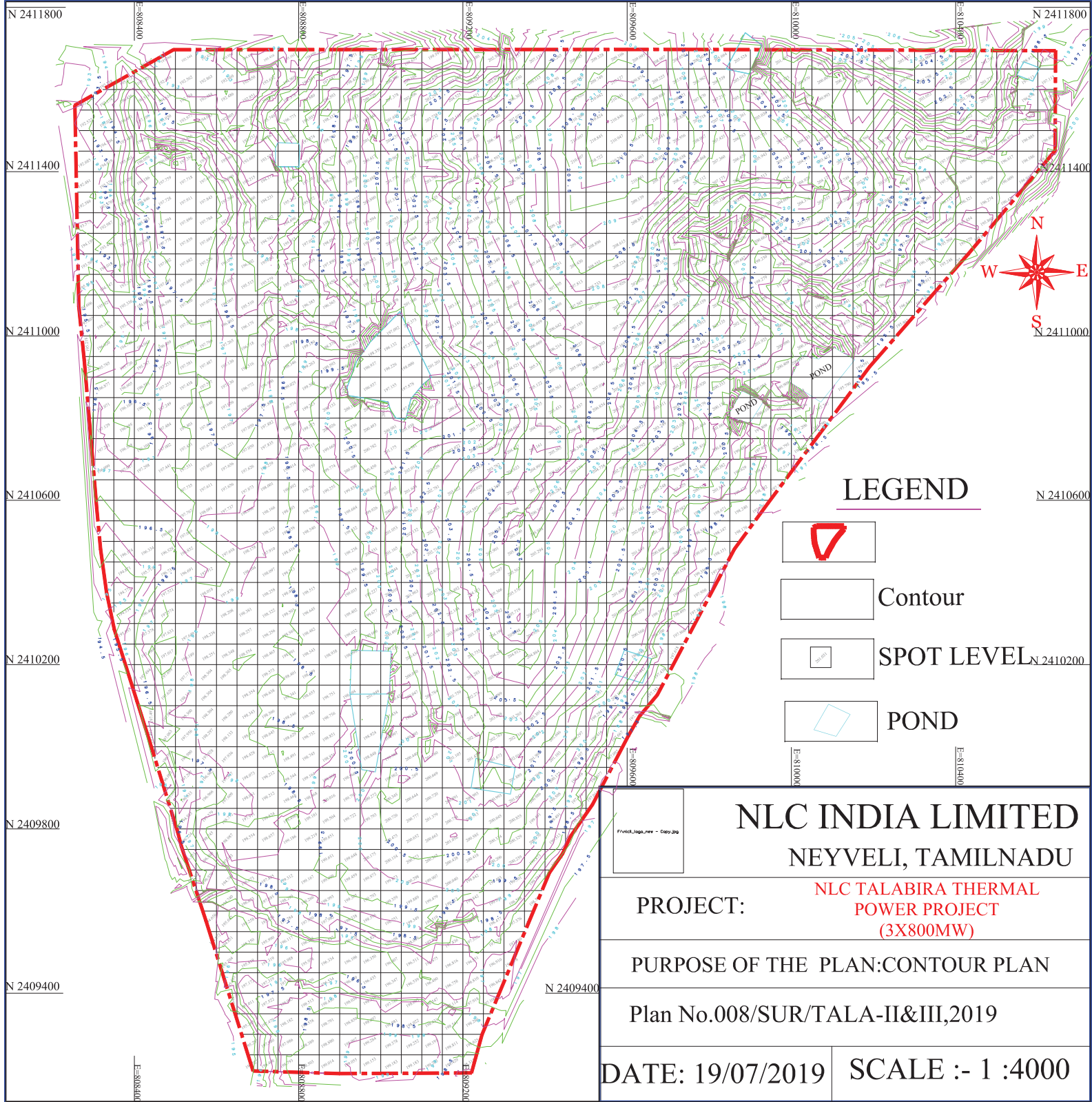
			sqm at project Site including supply and installation of vertigo test structure. This also includes guarantee for 12 months of operations for the design performance, materials supplied & erection works and workmanship for Civil construction	Engineered, Pre- fabricated Safety Park– 1 nos. approximate area 250 sqm at project Site including supply and installation of vertigo test structure. This also includes guarantee for 12 months of operations for the design performance, materials supplied & erection works and workmanship for Civil construction. <b>Note:-Interconnecting drain (upto 5mtr length) between office and garland drain shall be in the bidder's scope</b>
17	TCC Clause 4.7	NA	Heavy equipment will be tracked with real-time position location for fleet management. Deployment vs planned reports shall be generated. Equipment condition monitoring data like service meter reading, operation maps, loading, fuel levels, operating information, idle time etc. shall be captured. This data shall be captured through integrated online project monitoring system. All T&Ps and Equipment deployed by contractor will also be covered/ monitored through this system. Accordingly, minimum 5 signals per equipment should be made available to provide the input to integrated online project monitoring system. Necessary software/ hardware for aforesaid system shall be provided by BHEL	TCC Clause no 4.7 shall be " Null and Void"


**Note:**



- 1) All other terms and conditions against this NIT shall remain unchanged.**
- 2) This corrigendum is to be submitted duly signed and stamped along with the Techno-commercial bid (Part- I).**

**for BHARAT HEAVY ELECTRICALS LTD**  
**Manager/ SCT- CPC**



		<b>NLC INDIA LIMITED</b>	
		NEYVELI, TAMILNADU	
PROJECT:		NLC TALABIRA THERMAL POWER PROJECT (3X800MW)	
PURPOSE OF THE PLAN: CONTOUR PLAN			
Plan No.008/SUR/TALA-II&III,2019			
DATE: 19/07/2019		SCALE :- 1 :4000	