

TENDER SPECIFICATION FOR FABRICATION AND LAYING OF VARIOUS SIZES OF OVERHEAD COMPRESSED AIR PIPE LINES FROM DISTRIBUTION POINT TO NEWLY CONSTRUCTED SHOP FLOOR AT PPPU/THIRUMAYAM.

PART- I

I. Technical cum qualification bid

a. Notice inviting Tender

01	Name of work	Fabrication and laying of various sizes of overhead Compressed Air pipe lines from distribution point to newly constructed shop floors.
02	Location of work	PPPU/THIRUMAYAM
03	Estimated Value	Rs. 35.00 Lacs
04	Earnest Money Deposit	Rs. 1,00,000/-
05	Delivery	THREE (3) MONTHS (From the date of commencement of the work which will be reckoned from the date handing over the site to the contractor)
06	Last Date for Receipt of Tenders	25-11-2011 / 03:00 PM
07	Date of Technical cum Qualification Bid Opening	25-11-2011 / 03:30 PM
08	Date of RA/Price Bid Opening	Will be intimated separately to those who are qualified.
09	Guarantee Period for workmanship	(Twelve) Months from the date of actual completion of the entire work and handed over to Bharat Heavy Electricals Limited.

The Tender documents can be down loaded from BHEL website / govt. website at free of cost.

- b. The Contractors must submit their Tenders as required in TWO parts in separate sealed covers prominently super scribed as PART-I TECHNICAL CUM QUALIFICATION BID and PART-II PRICE BID and also indicating on each of the covers, The tender reference No. and due date and time as mentioned in the tender notice .
- c. A separate EMD cover should also be submitted. PART-I, PART-II and EMD covers shall be placed in a common cover super scribing Name of work, Tender reference No. and due date.
- d. Tenders may be finalised through TWO PART System or BY REVERSE AUCTION.

Clarifications on the tender specification if any may be sought by the bidders so as to reach this office at least seven days before the tender due date .

ISSUING OFFICER

CONTRACTOR'S SIGNATURE

II) Declaration by the bidders

2.1) Declaration by bidder’s authorized signatory

Ref no: ----- Date: -----

I, hereby certify that all the information and data furnished by me with regard to this tender specification are true and complete to the best of my knowledge. I have gone through the specifications, conditions and stipulations in detail and agree to comply with the requirements and intent of the specification. I further certify that i am duly authorised representative of the under mentioned bidder and a valid power of attorney to this effect is also enclosed.

Date:

Signature of authorized signatory
with seal

2.2) Certificate of no-deviation

Ref no: ----- date-----

We, M/s

hereby certify that notwithstanding any contrary indications/ conditions elsewhere in our offer documents, i/we have neither set any terms and conditions nor there is any deviation taken from the conditions of BHEL’s tender specifications, either technical or commercial, and i/we agree to all the terms and conditions mentioned in BHEL’s tender specification with associated amendments and clarifications.

Date:

Signature of the bidder

CONTRACTOR’S SIGNATURE

2.3) Format for e – payment

FORMAT TO RECEIVE E-PAYMENT THROUGH EXISTING ACCOUNT WITH NEFT/SEFT/RTGS ENABLED BANK BRANCH

Sub: E-payments vide NEFT/SEFT/RTGS - Reg.

VENDOR CODE AS PER BHEL	:	
VENDOR NAME AS PER BANK RECORDS	:	
ACCOUNT TYPE	:	
BANK ACCOUNT NUMBER	:	
NAME & ADDRESS OF THE BANK	:	
BRANCH CODE	:	
BRANCH RTGS CODE	:	
BRANCH MICR CODE	:	
NAME OF THE AUTHORISED SIGNATORY	:	

I/we confirm that I/We will bear the charges, if any levied by my/our bank for the credit of SEFT/RTGS amounts in our account.

For.....

SIGNATURE
(Authorized signatory)

We confirm that we are enabled for receiving NEFT/SEFT/RTGS credits and we further confirm that the account number, the signature of the authorized signatory, branch code, RTGS code and MICR code of our branch mentioned above are correct.

BANK VERIFICATION
(Manger's/Officer's signature under bank stamp)

Note: The above format duly filled and signed by the Contractor and the Bank authorities shall be enclosed along with offer so as to return the EMD amount through Electronic media.

CONTRACTOR'S SIGNATURE

III) Tender qualifying criteria:

Bidder must fulfil the following qualifying criteria concurrently for BHEL to accept the offer on Techno-Commercial ground and if any condition was not met by any vendor the offer will not be considered and liable for rejection.

- a.** Contractor must have minimum TWO Years of Experience in field of fabrication and erection of Over head Pipelines (preferably compressed air / LPG / gas) and should have executed minimum 1000m pipe line erection work.
- b.** The proof for the above experience stated in (a) should be provided in the form of Work order copies for the work executed in the past 5 years from the date of tender opening.
- c.** Financial Status:
 - i. Audited balance sheet for two years to be provided. (Financial years 2008-09 & 2009-10)
 - ii. Copies of the income tax return for previous two years to be provided. (Financial years 2008-09 & 2009-10)
 - iii. The Vendor should produce solvency certificate from a schedule bank for a value of Rs. 10 lacs.
- d.** Offer should be submitted along with EMD of Rs. 1,00,000/-

CONTRACTOR'S SIGNATURE

IV. SCOPE OF WORK

1) OUTLINE

Fabrication and laying of various sizes of overhead Compressed Air pipe lines from distribution point to newly constructed shop floor generally as per lay-out drawing No. 0M-20B-13-00970 in BHEL-PPPU Plant at Thirumayam.

2) QUANTUM OF WORK

Sl. No.	Work	Quantity	Unit
01	Laying of Main Header Pipe of Diameter 12"	450	Meters
02	Laying of Sub Header Pipe of Diameter 8"	400	Meters
03	Laying of Sub Header Pipe of Diameter 6"	550	Meters
04	Laying of Distribution Header Pipe of Diameter 4"	1250	Meters
05	Laying of Vertical Drop Line of Diameter 1"	2250	Meters
06	Installation of Isolation Valve 12"	1	No.
07	Installation of Isolation Valve 8"	3	No.
08	Installation of Isolation Valve 6"	4	No.
09	Installation of Isolation Valve 4"	8	No.
10	Installation of Isolation Ball Valve 1" with header at drop pipe line ends.	170	No.
11	Installation of Pressure Gauges	18	No.
12	Installation of QRC Coupling	540	No.

NOTE: The Quantity given is based on the Maximum requirement consideration. Actual will vary within +/- 20% during Erection based on the shop floor requirement at that period.

3) DETAILS OF WORK:

3.1 LAYING OF 12" OVER HEAD COMPRESSED AIR PIPE LINE

The 12" Pipe line is to be fabricated (butt welding of available pipes in Arc welding process using E-7018 electrode to make up the required length) and erected from the 12" header of the distribution receiver at the compressor house. These pipe lines are to be laid on the trestles existing above ground at approximate height of 8m in the open ground for a distance of approx. 150m and remaining portion of the pipe lines inside the shop on the columns (at interval of 7.4m and height of around 9m). Suitable pipe clamping supports as per BHEL drawing to be fabricated and fitted in each column. The supports are to be made to additionally carry 4" / 2" LPG & 2" Oxygen Pipe Lines, wherever required. Expansion cum condensation U-loop of 1m x 1m with 1" drain line to be provided at suitable locations for approx. every 100m.

CONTRACTOR'S SIGNATURE

3.2 LAYING OF 8" OVER HEAD COMPRESSED AIR PIPE LINE

The 8" Pipe Line will be branched from the 12" pipe line and to be laid inside the shop floor as per lay-out. The 8" Pipe line is to be fabricated (butt welding of available pipes in Arc welding process using E-7018 electrode to make up the required length) and erected inside the shop on the columns (at interval of 7.4m and height of around 9m). Suitable pipe clamping supports as per BHEL drawing to be fabricated and fitted in each column. The supports are to be made to additionally carry 2" LPG & 2" Oxygen Pipe Lines. Expansion cum condensation U-loop of 1m x 1m with 1" drain line to be provided at suitable locations for approx. every 100m.

3.3 LAYING OF 6" OVER HEAD COMPRESSED AIR PIPE LINE

The 6" Pipe Line will be branched from the 12" pipe line / extended from the 8" pipe line and to be laid inside the shop floor as per lay-out. The 6" Pipe line is to be fabricated (butt welding of available pipes in Arc welding process using E-7018 electrode to make up the required length) and erected inside the shop on the columns (at interval of 7.4m and height of around 9m). Suitable pipe clamping supports as per BHEL drawing to be fabricated and fitted in each column. The supports are to be made to additionally carry 2" LPG & 2" Oxygen Pipe Lines. Expansion cum condensation U-loop of 1m x 1m with 1" drain line to be provided at suitable locations for approx. every 100m.

3.4 LAYING OF 4" OVER HEAD COMPRESSED AIR PIPE LINE

The 4" Pipe Line will be branched from the 12" pipe line and to be laid inside the shop floor as per lay-out. The 4" Pipe line is to be fabricated (butt welding of available pipes in Arc welding process using E-7018 electrode to make up the required length) and erected inside the shop on the columns (at interval of 7.4m and height of around 9m). Suitable pipe clamping supports as per BHEL drawing to be fabricated and fitted in each column. The supports are to be made to additionally carry 4" / 2" LPG & 2" Oxygen Pipe Lines. Expansion cum condensation U-loop of 1m x 1m with 1" drain line to be provided at suitable locations for approx. every 100m.

3.5 LAYING OF 1" COMPRESSED AIR DROP AND DRAIN LINE

The 1" Pipe line is to be branched vertically from the 4" / 6" pipe lines at height of around 8m and erected downwards till 1.0 m above floor level. The required bend profiles for 1" Pipe line should be made to suit the site requirements. The vertical drop line is to be properly supported and clamped with minimum two pipe clamping supports in the column as per BHEL drawing. The supports are to be made to additionally carry 1" LPG & 1" Oxygen Pipe Lines. The 1" drop line should be installed with required end connection (suitable threaded nipple) for fitting of the valves.

CONTRACTOR'S SIGNATURE

3.6 INSTALLATION OF 12", 8", 6" AND 4" VALVES.

The 12" / 8" / 6" / 4" Valves are to be installed at various locations as per requirement of BHEL in the respective size of pipes. The vendor shall weld required end connection flanges on pipe lines wherever valves are going to be fitted. Then the valves are to be assembled with gaskets and fasteners during the installation. The valves should be supported wherever required. The quantity of the valves in each size is mentioned in Point No (2) of scope of work.

3.7 INSTALLATION OF 1" VALVE AND QRC\TAPPING MANIFOLD

All the drop lines and drain lines are to be installed with 1" Threaded Ball Valve with required sealing agents. The 1" valve should further be fastened to Air Tapping Manifold or QRC's with suitable adapters and sealing agents.

3.8 MOUNTING OF PRESSURE GAUGES

The pressure gauge should be installed in vertical position at viewable location on required pipe lines as per the instructions of BHEL supervisor. The pressure Gauges should be installed with 3/4" isolation valve. The end connection of the pressure gauge will be M20 X 1.5mm male connection.

3.9 Installation of 3/4" QRC Coupling:

3/4" QRC Couplings to be installed at the tapping points of air pipe lines / Air Tapping Manifolds in all shop floors as per instruction of the supervisor.

4 GENERAL PIPE LAYING DETAILS AND INSTRUCTIONS FOR ALL THE ABOVE WORKS

1. All pipe lines should be fabricated (edge preparation & butt welding of available pipes in Arc welding process using E-7018 electrode to make up the required length) and erected as per general pipe laying standards ensuring proper levelling, straightness. Pipe lines shall be routed and fabricated to ensure minimum pressure drop/line loss.
2. The pipeline should be routed such that it doesn't interfere with any Civil or Electrical or Crane or Mechanical Functions in the shop floor.
3. The pipe line should be routed as per drawing **0M20B1300970** (Drawing for Tender Purpose Only).
4. The contractor shall employ skilled & qualified welders (having experience in overhead pipe line welding), fitters, etc. for execution of the contract. All welders should be

CONTRACTOR'S SIGNATURE

approved based on qualification and trial welding at site, by BHEL supervisor prior to engagement in fabrication and pipe laying work.

5. All pipe line outer surface coatings, dirt are to be thoroughly cleaned and rust to be removed by wire brush. Also cleaning the dirt inside and outside pipes to be done prior to fabrication. The contractor should follow the welding procedure / Instruction for the weld joints given by BHEL during execution.
6. All the pipe line welding to be made to withstand the operating pressure of 8 bar, ensuring zero leak.
7. All the pipe lines are to be properly supported and clamped at required locations.
8. Fabrication of the pipe line includes the installation of required bend's, T's, Reducer's, Flanges, Weld Nipples, etc. required as per site conditions. All threads will be of BSP standard. The Contractor shall erect/ install the pipe lines, flanges, valves etc. as per instructions of BHEL supervisor.
9. Subsequent to the laying of the pipe lines, they are to be painted, hydro tested, installed with tapping points and pressure gauges as mentioned.

5 ISSUE OF MATERIALS / CONSUMABLES:

It will be in the scope of contractor to move the required materials from BHEL Thirumayam Stores to the erection spot for execution of work. The contractor shall arrange his own Trolleys for material shifting, Crane with Lifting Tackles and required Manpower for the movement of materials from BHEL (Thirumayam) stores to the erection spot within plant.

5.1 SCOPE OF BHEL:

BHEL will supply the following materials **free of cost** at PPPU, Thirumayam plant stores.

- a) All the Pipe Material required for the Pipe Laying.
- b) All the structural materials required for fabrication of pipe supports.
- c) All Tees, Elbows, Reducers and Flanges.
- d) All the Control Valves, Pressure Gauges, Tapping Manifolds and QRC's.
- e) Consumables like Electric Power and Water at a Single Location in the Site free of cost. (Electrical Point will be provided at a location within 200m in circumference from work site, it will be in the contractor's scope to make arrangements for necessary cabling).
- f) Welding electrodes and paint for the entire work.

5.2 SCOPE OF CONTRACTOR:

- a. The contractor should bring in their own tools and lifting tackles including three phase welding machine with electrode holder, cutting torch, Welding cable, oxy-acetylene regulators with rubber hoses, wire brushes, paint brush, ladders and hydro test machine for the execution of the work.
- b. The contractor should bring their own Gases for welding and cutting, gasket material (CAF), grease, thread seal, PTFE tape, all type of fasteners (Metric Thread Nickel

CONTRACTOR'S SIGNATURE

Coated; Make: TVS / Unbrako / Unifrax) for Flanges-clamps-supports-etc, U-clamps and threaded weld nipples (for installation of 1" Valve and Pressure Gauges) required for the execution of above works.

- c. Portable Compressor for air requirement if any should be brought by the contractor.
- d. The Contractor should make their own arrangements for the requirement of mobile crane facility and vehicle required for the movement of material and the execution of the work within the plant.
- e. The Contractor should bring all the necessary personal protective equipments like safety shoes, hand gloves, goggles, welding shield, mask, safety belts, etc and it is the responsibility of the contractor to ensure the usage of all the PPEs by their work force.

6. HYDRO-TEST DETAILS

All pipe lines after being laid should be hydro tested at 12 bar for a holding time of 10 min. and should be checked for leaks. All pipe lines should be installed with required vents and drains in the pipe lines for the hydro-test. Any leaks noticed should be corrected and the pipelines to be retested for any leakage. Subsequent to the completion of hydro-testing, the pipe lines should be completely vented, cleaned and dried before handing over for service.

7 PAINTING DETAILS:

All pipe line are to be painted with one coat of red oxide primer and two coats of epoxy paint - one coat before erection and one coat after erection, as per standard IS:2379 - 1990 (Colour Code for Identification of Pipe Lines). The pipe line should be marked with flow directions, medium being carried and colour band at necessary locations as per the instructions of BHEL Supervisor.

8 GENERAL NOTE:

- 8.1 Attendance register should be maintained.
- 8.2 The contractor shall maintain proper house-keeping during execution and dispose off the waste and scrap materials generated immediately at the identified places as per the instruction of area supervisor.
- 8.3 The contractor should engage a qualified supervisor to plan and co-ordinate the entire activities.
- 8.4 The contractor should engage sufficient skilled man power so as to complete the work in scheduled time without delay. An activity PERT chart to be submitted before starting the work and the same to be followed and reviewed.
- 8.5 The contractor shall provide one year warranty for workmanship.
- 8.6 Contractor should meet PF and ESI as statutory requirements for their employees. Copies of PF and ESI codes certificate should be submitted along with offer.
- 8.7 The contractor may visit the site, check details of work and sketches before quoting the rate.

CONTRACTOR'S SIGNATURE

9 DELIVERY

The contractor has to complete the entire work within 90 days from the date of work order release.

10 PAYMENT TERMS

100% payment will be made on pro-rata basis for the actual completion of work. Bill may be claimed for pipe lines that have been installed, hydro-tested, cleaned, vented, leak checked, clamped, painted and handed over for service only.

Qty indicated in the Tender is tentative and the payment shall be made only for the actual work completed.

11 SECURITY DEPOSIT

SD should be remitted by the successful tendered as below before starting the work.,
Above 10 Lakhs and up to 50 Lakhs = 1 Lakh + 7.5% of Order value of exceeding 10 Lakhs .

50% of the SD should be remitted before start of the work.

The remitted EMD can be converted as SD and the balance amount should be remitted before start of the work.

The remaining 50% of SD will be recovered in the running bills @ 10%.

- a. The security Deposit should be remitted before start of the work by the contractor either as Pay Order or Demand Draft in favour of BHEL.
- b. Local cheques of scheduled banks, subject to realization. Securities available from Post Offices such as National Savings Certificates, Kisan Vikas Patras etc. (Certificates should be held in the name of Contractor furnishing the security and duly pledged in favour of BHEL and discharged on the back).
- c. Fixed Deposit Receipt issued by Scheduled Banks / Public Financial Institutions as defined in the Companies Act. The FDR should be in the name of the contractor, A/C BHEL, duly discharged on the back.
- d. Security deposit can also be recovered at the rate of 10% from the running bills. However in such cases at least 50% of the Security Deposit should be remitted (either by cash/DD or Security deposit for maximum 50% of total SD) before start of the work and the balance 50% may be recovered from the running bills.
- e. EMD of the successful bidder shall be converted and adjusted against the Security Deposit, excepting for such bidder who has remitted One Time EMD.
- f. The Security Deposit shall not carry any interest.

CONTRACTOR'S SIGNATURE

12 REGULAR WORKING HOURS:

Contract work should be carried out from 8AM to 6PM every day including Sundays and holidays. Work should be carried out in night shift in case of emergency to expedite the work.

13 INSURANCE COVERAGE FOR MEN & MATERIALS

The Contractor shall arrange necessary Insurance cover with appropriate Third Party Liability cover Personal Accident Policy as applicable for the workmen crew. If any accident/injury/loss occurs while erection of the crane, to any other persons/ public and the properties of BHEL/client/other agencies/third party, the contractor shall have to pay necessary compensation and other expense, so decided by the appropriate authorities.

14 VALIDITY OF THE OFFER

Validity of the offer shall be for a minimum period of THREE MONTHS from the date of opening of tenders.

15 EARNEST MONEY DEPOSIT

15.1 EMD: Rs 1,00,000/- (One Lacs Rupees Only) should be submitted along with the offer.

15.2 Bidders who have already deposited One Time EMD of Rs. 2.00 lacs with BHEL are exempted from submission of EMD for this tender. However a copy of 'One Time EMD' at BHEL Trichy submitted shall be enclosed along with the Offer.

15.3 EMD is to be paid in the form of Pay order or Demand Draft in favour of Bharat Heavy Electricals Limited, Tiruchirapalli and payable at Tiruchirapalli. No. other form of EMD remittance shall be acceptable to BHEL.

15.4 In the case of unsuccessful bidders, the Earnest Money will be refunded to them after acceptance of tender by successful bidder. EMD shall not carry any Interest.

16 RETURN OF SECURITY DEPOSIT

If the contractor fully performs and completes the works in all respect to the entire satisfaction of BHEL, Security Deposit will be released to the contractor after deducting all costs of expenses of other amounts that are to be paid to BHEL

17 ACCOMATION & LOCAL CONVEYANCE

Contractor has to make their own arrangement for accommodation, local transport and other amenities for their workmen.

CONTRACTOR'S SIGNATURE

18 SAFETY OF MEN, EQUIPMENT, MATERIAL AND ENVIRONMENT

- 18.1 PPEs shall be provided by the contractor as per attachment with appropriate trade job has to be ensured by the contractor at the job site at all times as per BHEL procedure. List of PPE is enclosed in ANNEXURE-A
- 18.2 Safe work permits should be obtained by the contractor for Work at height before starting the work. The Format is enclosed herewith .ANNEXURE-B
- 18.3 The Contractor shall abide by the Safety Regulations applicable for the Site/Project. Contractors are also to ensure that their employees and workmen use safety equipments as stipulated in the Factories Act (Latest Revision) during the execution of the work. Failure to use safety equipment as required by BHEL Engineer will be a sufficient reason for issuance of memo, which shall become part of Safety evaluation of the contractor at the end of the Project. Also all site work may be suspended if it is found that the workmen are employing unsafe working practice and all the costs/losses incurred due to suspension of work shall be borne by contractor.
- 18.4 The contractor shall submit report of all accidents, fires and property damage, dangerous occurrences to the authorized BHEL official immediately after such occurrence but in any case not later than twelve hours of the occurrence. Such report shall be furnished in the manner prescribed by BHEL and also to meet statutory requirement. Any injury sustained by any of the contractor's employees within the Project premises must be reported to BHEL supervisor and FIRST AID should be immediately administered. The Contractor shall be responsible for keeping and maintaining proper records of Accidents to his personnel. According to the Factory Act and the Employees state Insurance Act & regulation, any person sustaining any injury within the project premises and absenting himself from work for more than 46 hours, his accident report has to be sent to the respective Government Authorities. Therefore contractor shall inform the owner's representative such matter immediately for their needful action.

19 REVERSE AUCTION

BHEL reserves the right to go for a Reverse Auction (RA) or Opening the submitted Part-I Qualification cum Technical bid, which will be decided after technical evaluation.

19.1. GENERAL TERMS AND CONDITIONS OF RA. I.E. ON LINE BIDDING THROUGH THE INTERNET FOR THE PROPOSED REVERSE AUCTION:

- a. BHEL will engage the services of a service provider who will provide all necessary training and assistance before commencement of on line bidding on internet.
- b. BHEL will inform the vendor in writing in case of reverse auction, the details of Service Provider to enable them to contact & get trained.
- c. Business rules like event date, time, and Start price, bid decrement, extensions etc. also will be communicated through service provider for compliance.

CONTRACTOR'S SIGNATURE

- d. Vendors have to fax the Compliance form in the prescribed format (provided by Service provider) before start of Reverse auction. Without this, the vendor will not be eligible to participate in the event.
- e. BHEL will provide the calculation sheet (e.g., EXCEL sheet) which will help to arrive at “Total Cost to BHEL” like Mobilisation Charge, Demobilisation charge, Hiring Charges, Service Tax for Services and loading factors (for non-compliance to BHEL standard Commercial terms & conditions) for each of the vendor to enable them to fill-in the price and keep it ready for keying in during the Auction.
- f. Reverse auction will be conducted on scheduled date & time.
- g. At the end of Reverse Auction event, the lowest bidder value will be known on the network.
- h. The lowest bidder has to Fax the duly signed Filled-in prescribed format as provided on case-to-case basis to BHEL through Service provider within 24 hours of Auction without fail.
- i. Any variation between the on-line bid value and the signed document will be considered as sabotaging the tender process and will invite disqualification of vendor to conduct business with BHEL as per prevailing procedure.
- j. In case BHEL decides not to go for Reverse Auction procedure for this tender enquiry, the Price bids and price impacts, if any, already submitted and available with BHEL shall be opened as per BHEL’s standard practice.

For any queries / clarifications the bidders may contact us through FAX NO. +91 431 2521416 or through e-mail: esalai@bheltry.co.in

CONTRACTOR’S SIGNATURE

ANNEXURE “A”**I. Personal Protective Equipment Recommended for Pipe Line Fabrication and Erection Work**

Sl. No.	Job/Trade	PPE Recommended
1.	Arc welder	Leather gloves Leather apron Spectacle goggles Hand shield Filter lens 11-14 Leather leg guard Safety boots slip in type
2.	Gas welder Gas	welding goggles Leather gloves Safety shoes
3.	Painter	PVC gloves Light fume respirator Safety shoes Barrier cream Spectacle goggles
4.	Fitter / General	Leather gloves Safety shoes Spectacle goggles
5.	Crane operator	Safety shoes Canvas gloves Spectacle goggles
6.	Rigger	Leather gloves Safety helmet Safety shoes Spectacle goggles
7.	Unskilled / semi skilled	Leather gloves Worker Safety shoes Spectacle goggles Plastic face shield
8.	Other Employees	Safety shoes Spectacle goggles

CONTRACTOR'S SIGNATURE


II. Personal Protective Equipment Recommended for Hazardous Operations

Sl. No.	Job/Trade	PPE Recommended
1.	High Noise Area	Ear Plug / Ear Muff
2.	Work at height	Gloves Safety Belt Helmet Safety Shoes

Note: Contract Workers, Engineers, Supervisors and proprietors should wear Pant & Shoes, while entering the factory premises.

CONTRACTOR'S SIGNATURE

ANNEXURE-B – SAFE WORK PERMIT

 310-015/A	<h2 style="margin: 0;">SAFE WORK PERMIT</h2> <p style="margin: 0;">(WORK AT HEIGHT INCLUDING ROOF LIGHT MAINTENANCE & FURNACE WORK)</p>		
PERMIT INITIATION			
M & S Control No.		Date	
Description of Work			
Area of Work			
Period of Work	From	To	
Time	From	To	
	AM/PM	AM/PM	
Name of Executing Agency / Contractor Reference			
Name of the persons engaged :			
Date:	Signature of Initiating area's Executive	Name Seal	
PERMIT CLEARANCE			
PRODUCTION DEPARTMENT SHUT DOWN / INTIMATION			
Date:	Signature	Name Seal	
CRANES / M& S DEPARTMENT			
Date:	Signature	Name Seal	
SAFETY MANAGEMENT			
Date:	Signature	Name Seal	

CONTRACTOR'S SIGNATURE

PERMIT WITHDRAWAL		
EXECUTING DEPARTMENT		
The work has been completed. Men and materials withdrawn. Intimation given to production.		
Date:	Signature of Executive	Name Seal
CRANES / M & S DEPARTMENT		
Withdrawal of permit is acceptable.		
Date:	Signature	Name Seal
SAFETY MANAGEMENT		
Withdrawal of permit is acceptable		
Date:	Signature	Name Seal
<p>SAFETY INSTRUCTIONS:</p> <ul style="list-style-type: none"> ❖ Use appropriate PPE (Safety belts, Helmets, Goggles etc.) ❖ Post a 'Look-out man' with red flag and whistle. ❖ Provide safe access ❖ Provide warning ❖ All loose materials / tools to be taken out. ❖ Permit will be valid for only one week (Monday to Saturday ; Separate Permit to be obtained for Sunday). 		
<u>TO BE ENSURED BY THE INITIATING DEPARTMENT (Put tick mark in the relevant box)</u>		
	ENSURED	NOT REQD
1. Necessary FIRE PREVENTION measures taken	<input type="checkbox"/>	<input type="checkbox"/>
2. Informed FIRE SERVICE	<input type="checkbox"/>	<input type="checkbox"/>
3. Alert other employees in the nearby area	<input type="checkbox"/>	<input type="checkbox"/>
4. Safe Access available / Provided	<input type="checkbox"/>	<input type="checkbox"/>
5. Use of SAFETY BELT	<input type="checkbox"/>	<input type="checkbox"/>
6. Wearing of HELMET	<input type="checkbox"/>	<input type="checkbox"/>
7. Use of SAFETY GOGGLES	<input type="checkbox"/>	<input type="checkbox"/>
8. Use of RESPIRATOR	<input type="checkbox"/>	<input type="checkbox"/>
9. 'LOOK-OUT' man	<input type="checkbox"/>	<input type="checkbox"/>

CONTRACTOR'S SIGNATURE

PART- II**PRICE BID**

Name of work: Fabrication and laying of various sizes of overhead Compressed Air pipe lines from distribution point to newly constructed shop floor.

Schedule of Rate

Sl. No.	Work	Quantity	Unit	Rate Per Unit	Total Value
01	Laying of Main Header Pipe of Diameter 12"	450	Meters		
02	Laying of Sub Header Pipe of Diameter 8"	400	Meters		
03	Laying of Sub Header Pipe of Diameter 6"	550	Meters		
04	Laying of Distribution Header Pipe of Diameter 4"	1250	Meters		
05	Laying of Vertical Drop Line of Diameter 1"	2250	Meters		
06	Installation of Isolation Valve 12"	1	No.		
07	Installation of Isolation Valve 8"	3	No.		
08	Installation of Isolation Valve 6"	4	No.		
09	Installation of Isolation Valve 4 "	8	No.		
10	Installation of Isolation Ball Valve 1" with header at drop pipe line ends.	170	No.		
11	Installation of Pressure Gauges	18	No.		
12	Installation of QRC Coupling	540	No.		

Contractors should fill the rate in the above format only, sign & seal and place in a Sealed Cover separately by super scribing as PART-II/PRICE BID with Name of work, Tender ref no., due date on the Cover.

Note:

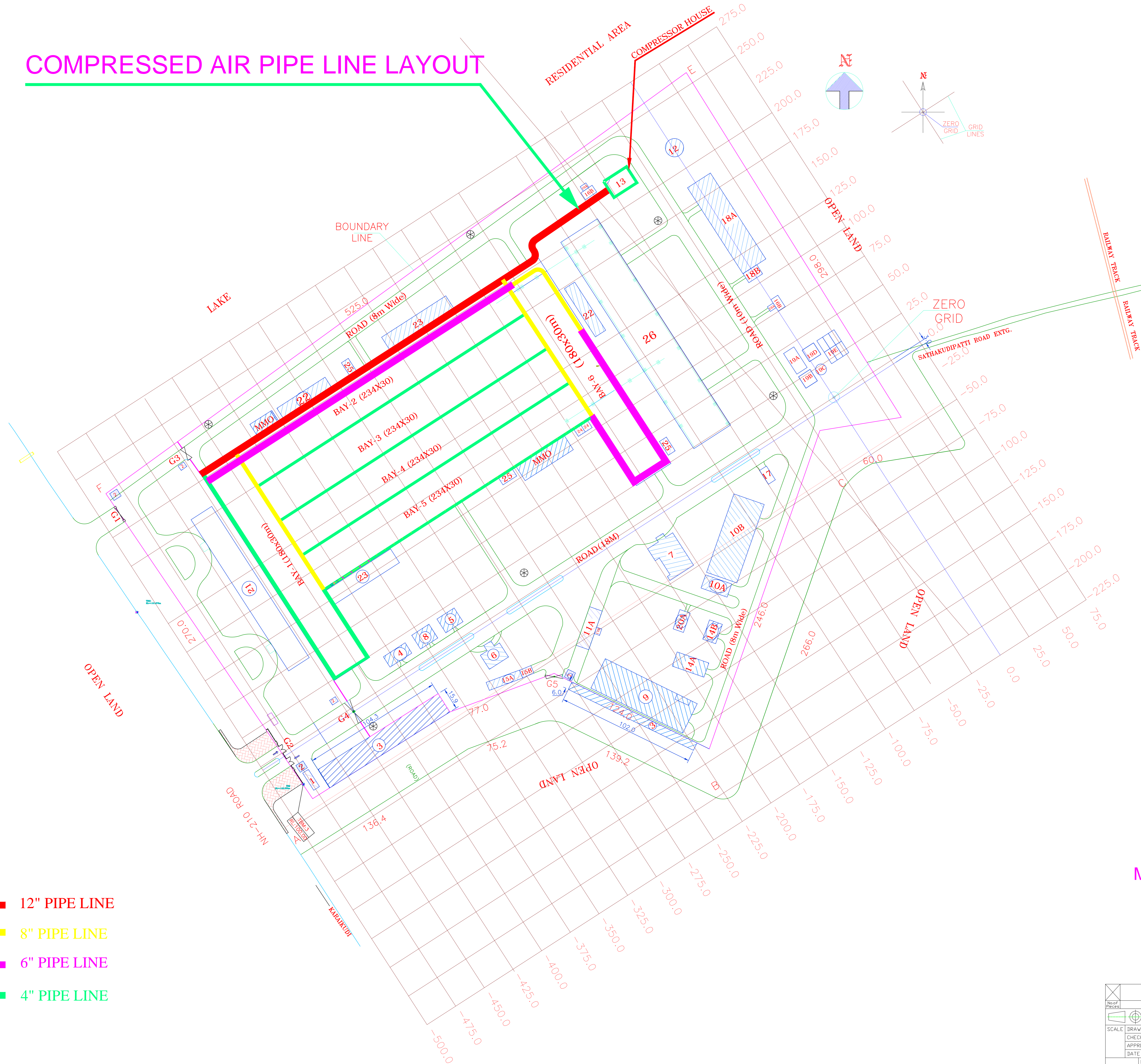
- 1. Rates shall be quoted without any Tax.**
- 2. Applicable Service Tax, if any shall be separately mentioned in the offer.**

Contract will be given to a technically qualified Single contractor for all the above Compressed Air Pipe line works mentioned in this enquiry on cumulative L1 basis.

-----oo00ooo-----

CONTRACTOR'S SIGNATURE

COMPRESSED AIR PIPE LINE LAYOUT



- █ 12" PIPE LINE
- █ 8" PIPE LINE
- █ 6" PIPE LINE
- █ 4" PIPE LINE

PROPOSED LAYOUT OF
THIRUMAYAM PLANT
MS:TRM:30:225:107/3

DESCRIPTION	MATERIAL	STANDARD	NET.WT.IN KGS.	DRAWING No.	ITEM No.
REFERENCE:		ALTERATIONS:	DCN REF	DATE	SIGN
SCALE	DRAWN/TCO S.Selvamanickam				
CHECKED					
APPROVED					
DATE	28.10.11'				
MACHINE: AIR PIPE LINE			TYPE: 4514:01		
TITLE: COMPRESSED AIR PIPE LINE LAY OUT (THIRUMAYAM)			DRAWING No: OM20B1300970	REV.	
Sheet No:			No of Sheets:		

CAUTION: THIS DRAWING IS THE PROPERTY OF THE COMPANY. IT SHALL NOT BE LOANED, REPRODUCED, COPIED, OR IN ANY MANNER BE MADE PUBLIC. THE COMPANY SHALL NOT BE RESPONSIBLE FOR ANY DAMAGE OR LOSS OF DATA OR INFORMATION CAUSED BY THE USE OF THIS DRAWING.

ALL DIMENSIONS ARE IN MM