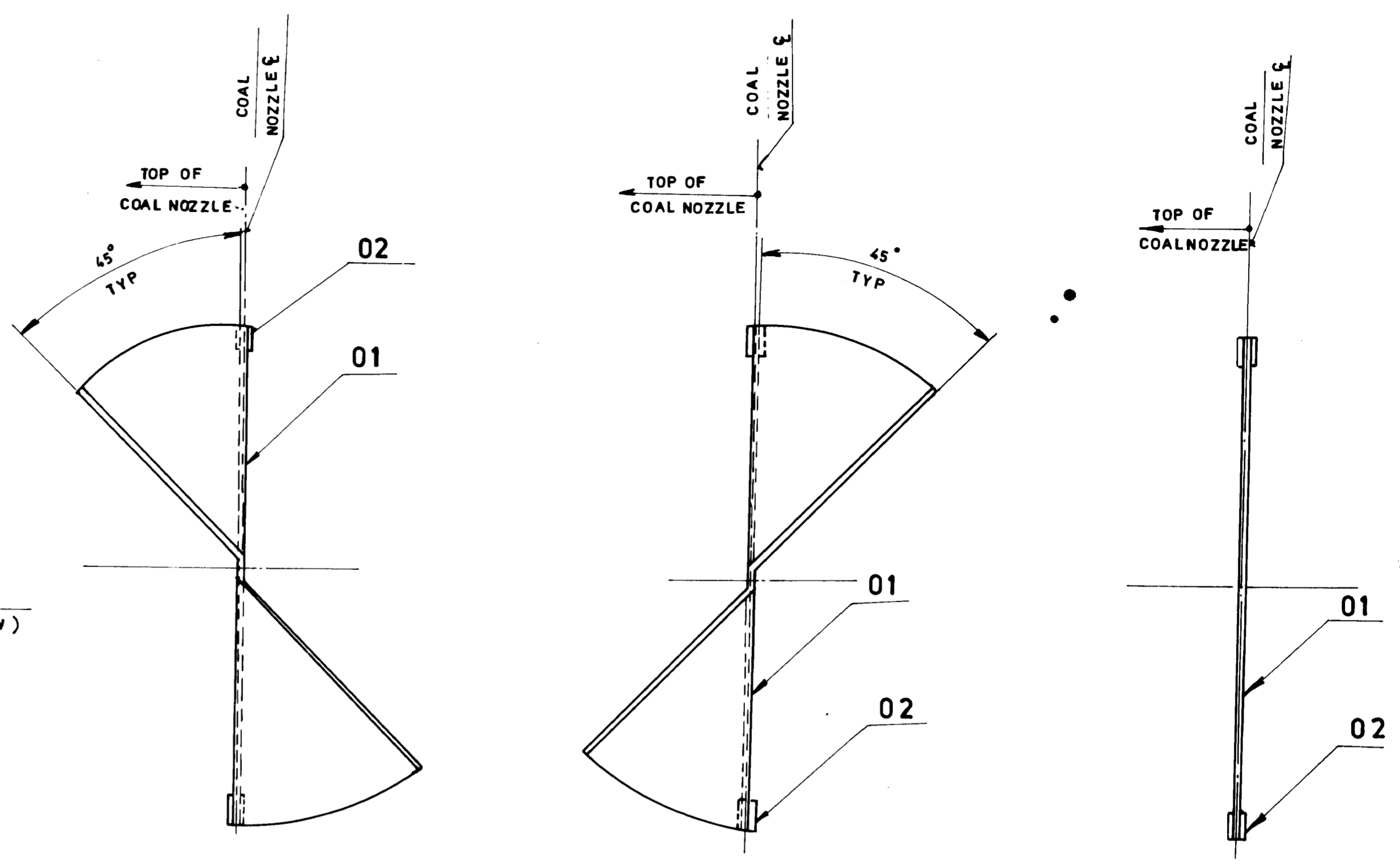
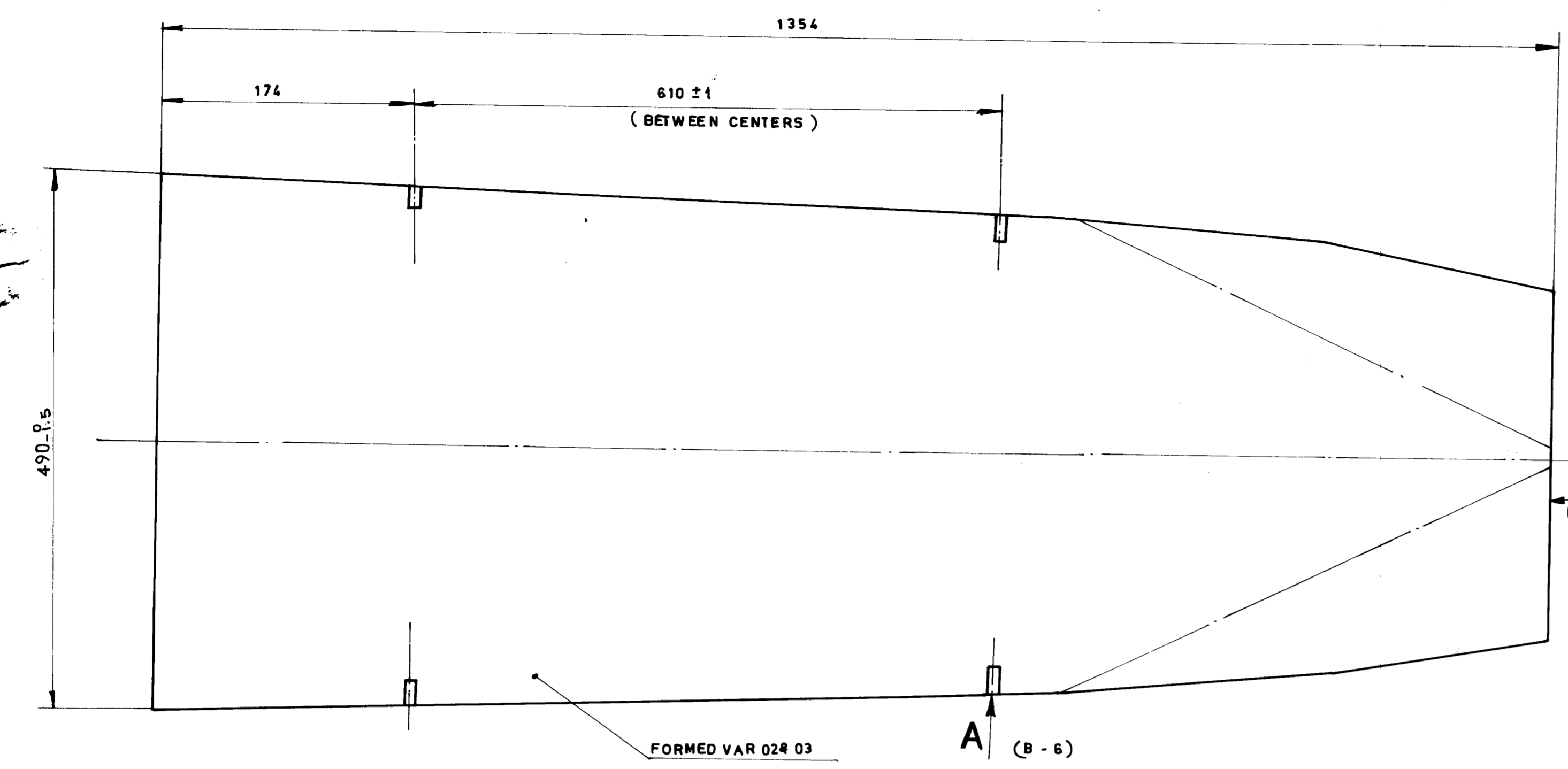
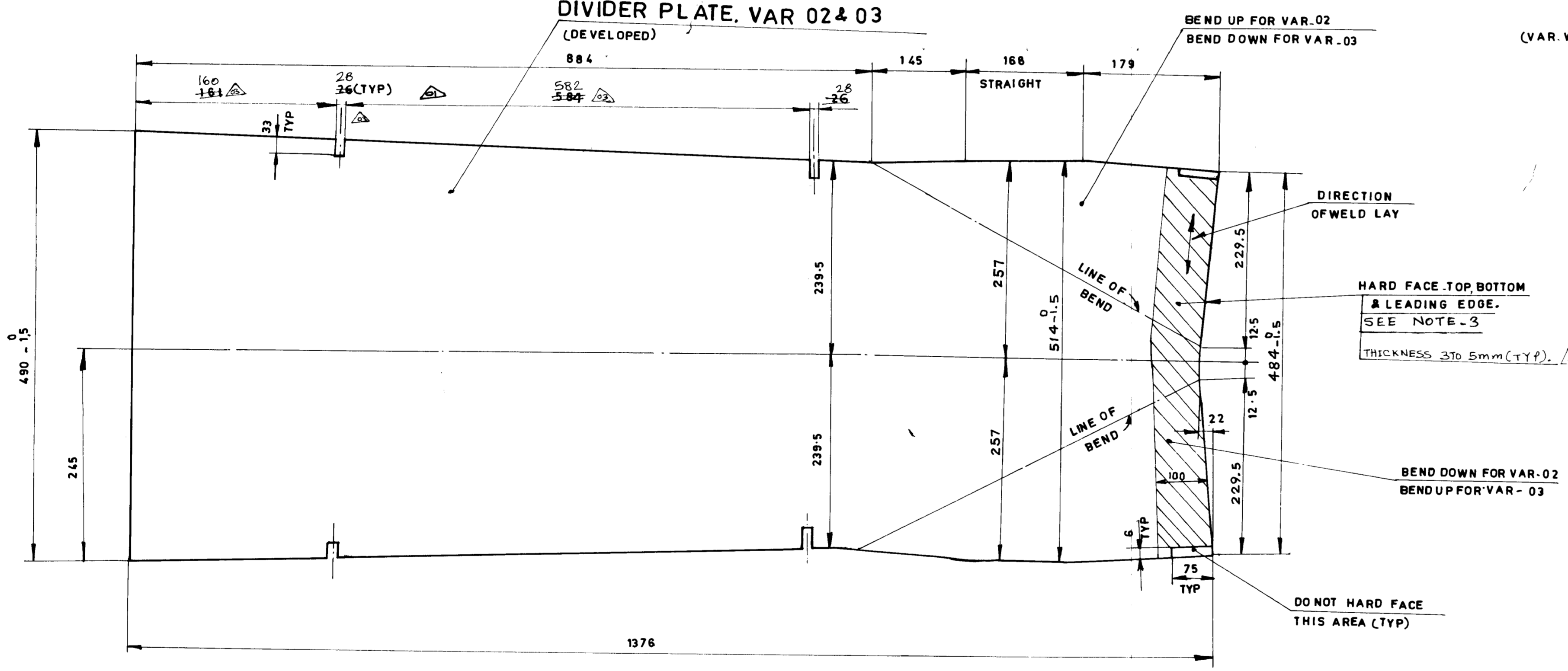


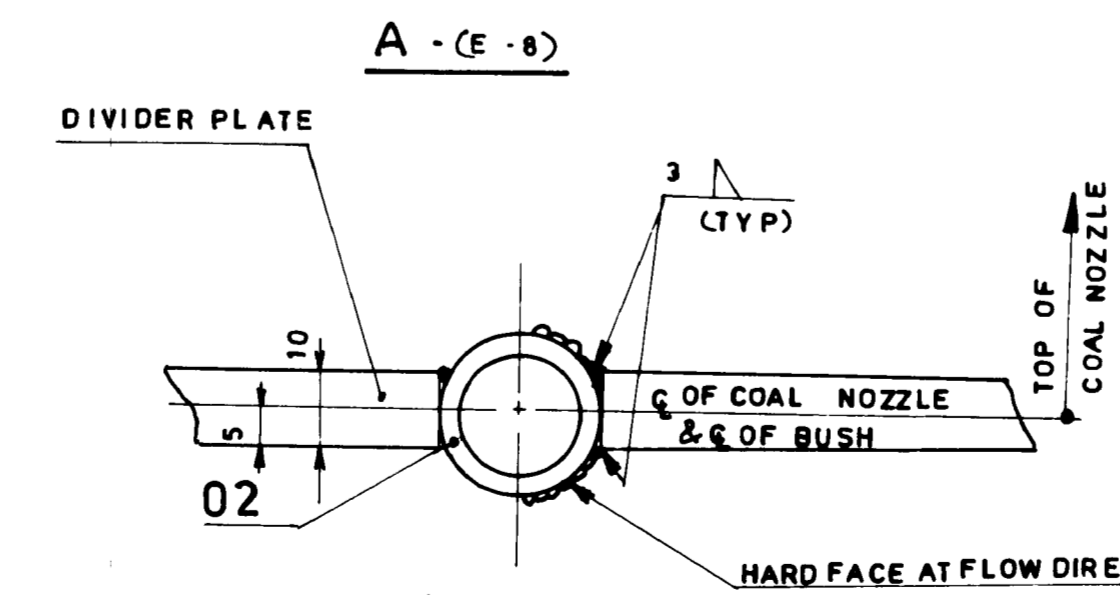
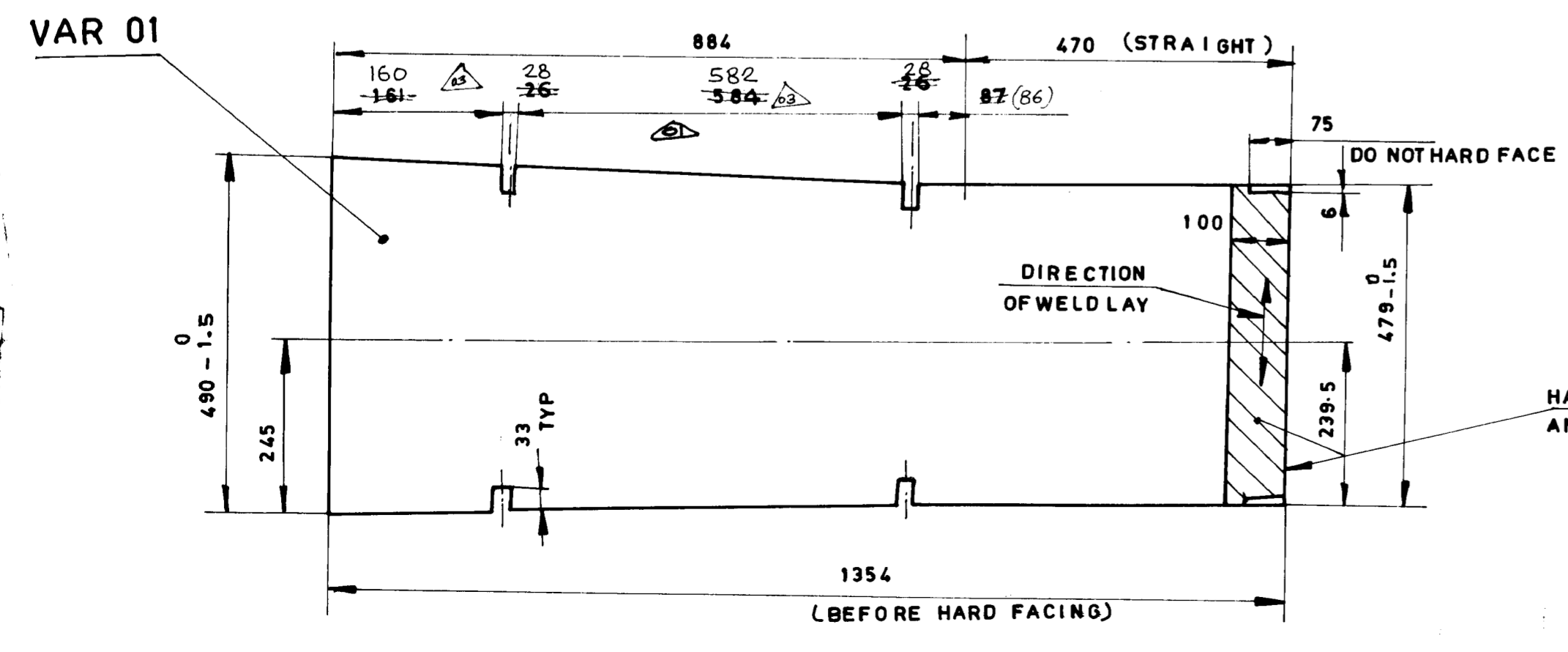
01700-022-57-1  
ON DRAWING



**DIVIDER PLATE, VAR 02 & 03**  
(DEVELOPED)



- NOTE:-**
- FORMED PLATES LOOKING FROM COAL NOZZLE REAR SIDE.
  - FOR FITTING DETAILS REFER COAL COMPT ASSY DRG, REFER "DIVIDER PLATE ASSY. CHART" IN THAT DRG.
  - USE COBALARC IM FOR HARDFACING.



ITEM NO.	DESCRIPTION	QTY	UNIT	WT
03 02	TU.D 26.9x2.65;32	4		0.045
	IS 1239			
03 01	PL 10 X 514 X 1376	1		54.000
	IS 2062 Fe410WB			
02 02	TU.D 26.9x2.65;32	4		0.045
	IS 1239			
02 01	PL, 10x514 X1376	1		54.000
	IS 2062 Fe410WB			
01 02	TU.D 26.9x2.65;32	4		0.045
	IS 1239			
01 01	PL, 10 X 490 X 1354	1		51.500
	IS 2062 Fe410WB			

**REVISIONS**

REV	DATE	BY	DESCRIPTION
01	03/02/90	CHD	...
02	04/23/99	CHD	...

**GENERAL INFORMATION**

TYPE OF PRODUCT OR NAME OF CUSTOMER/PROJECT: **734210**

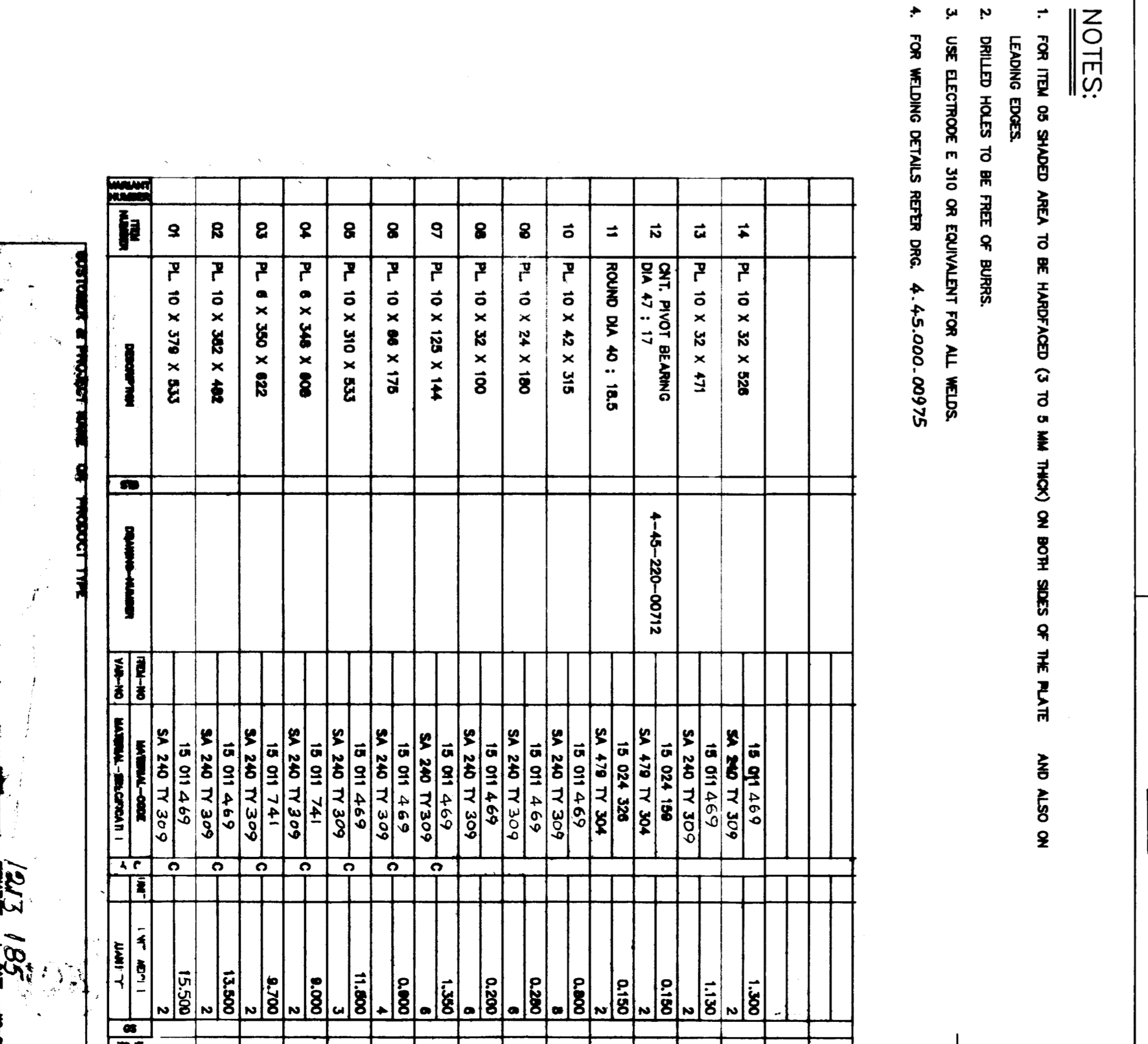
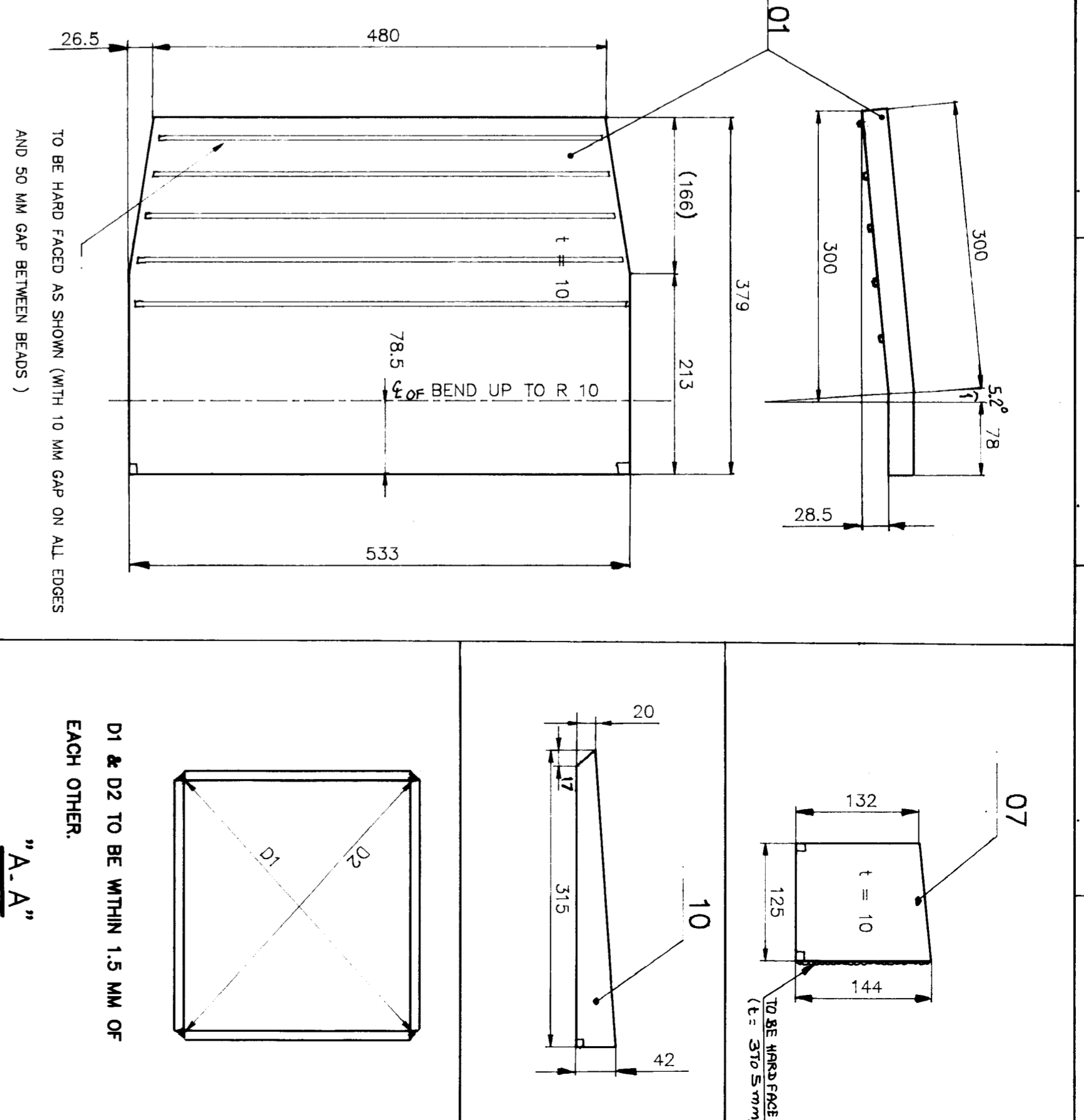
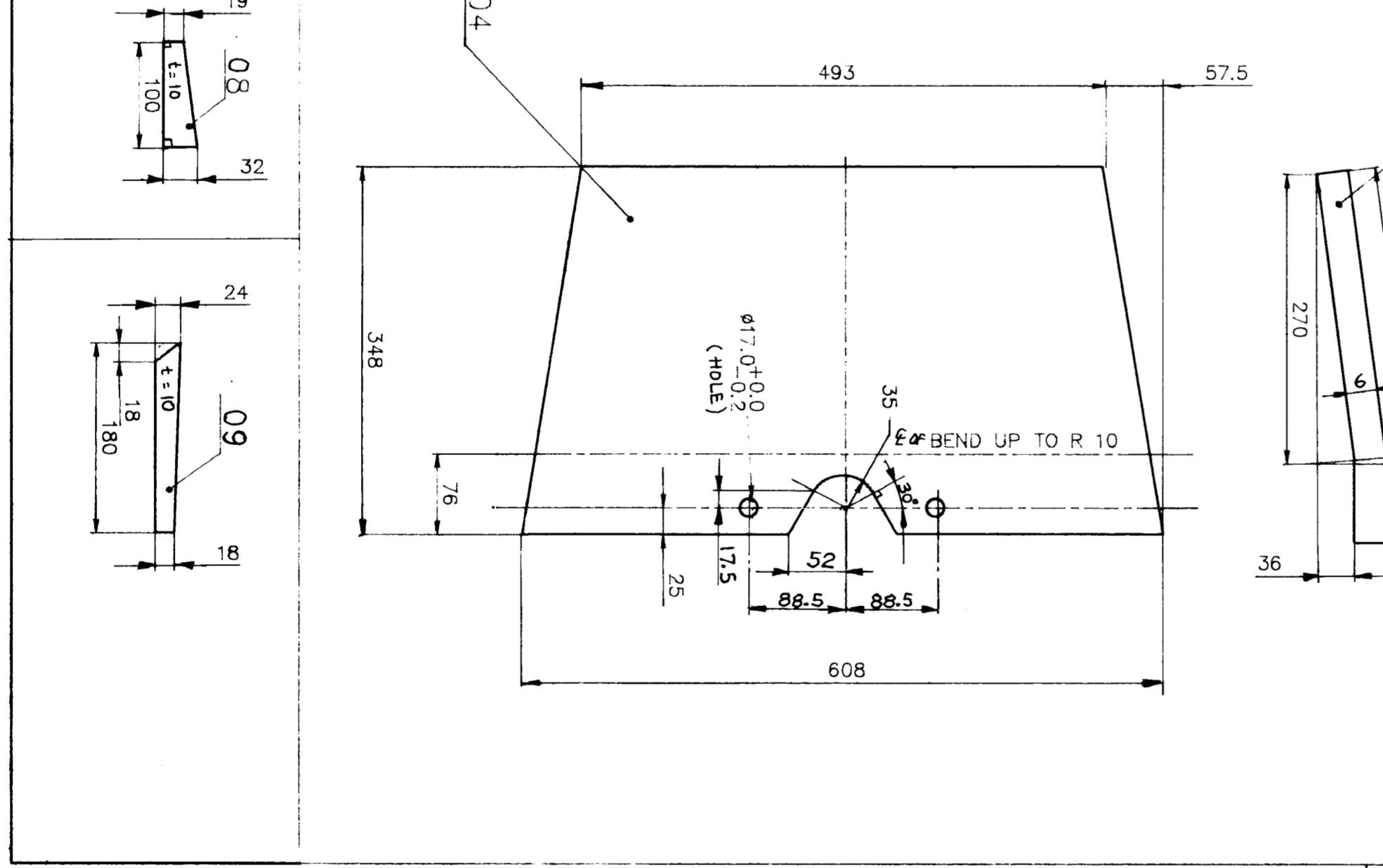
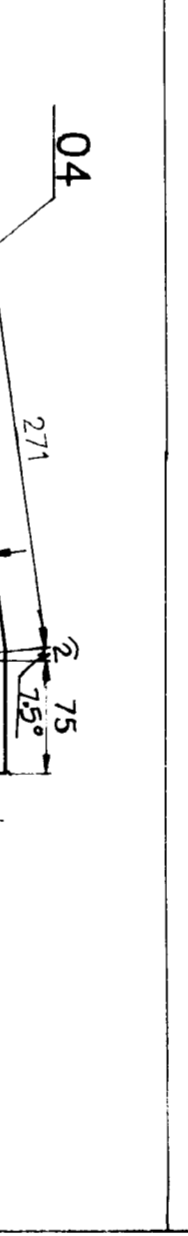
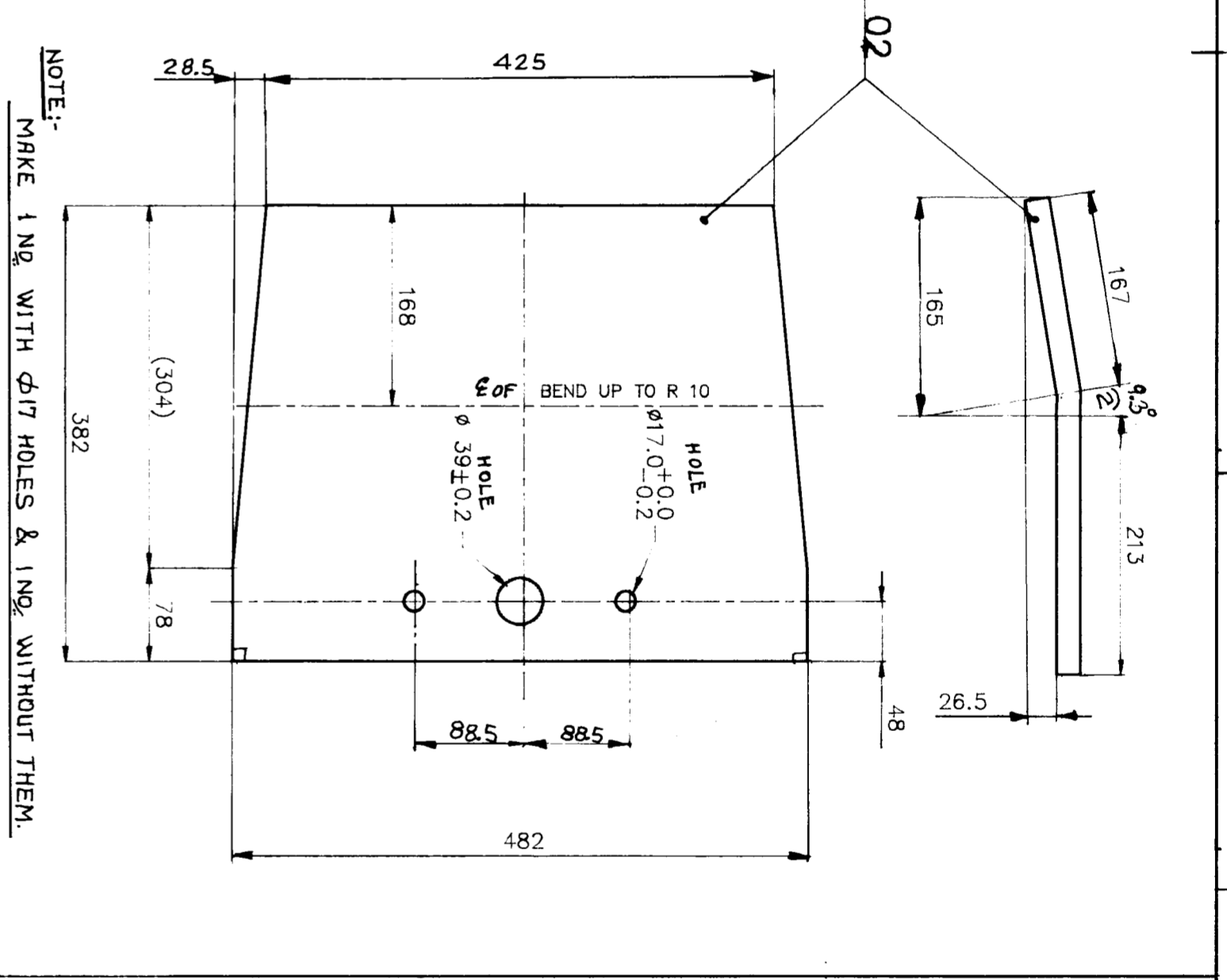
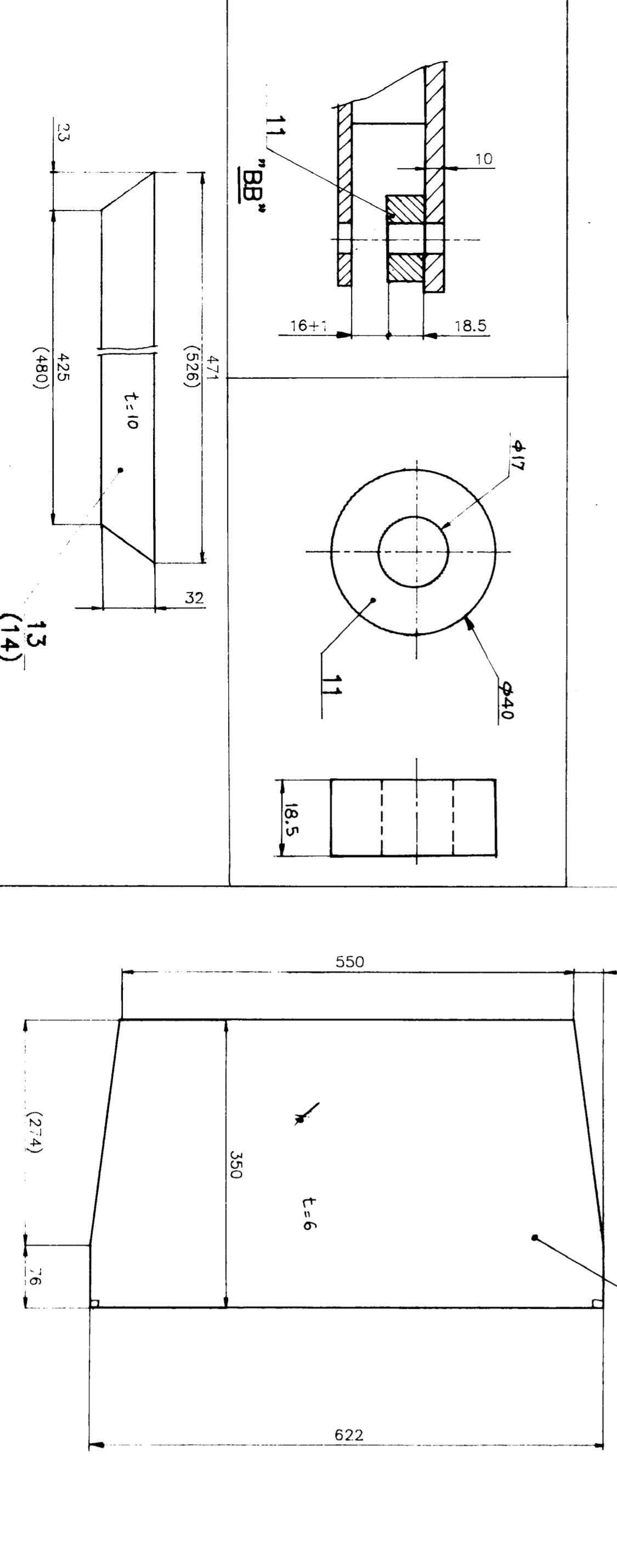
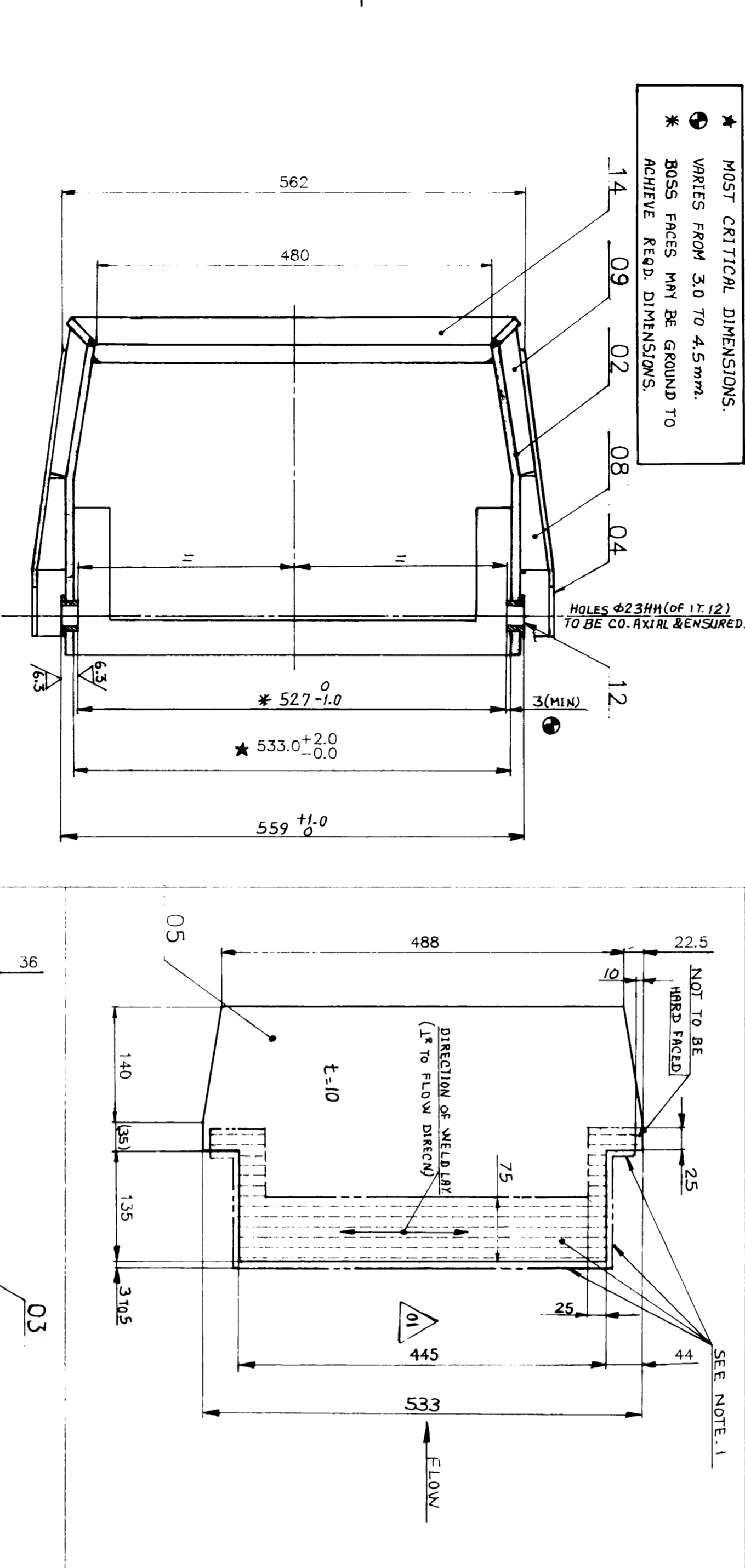
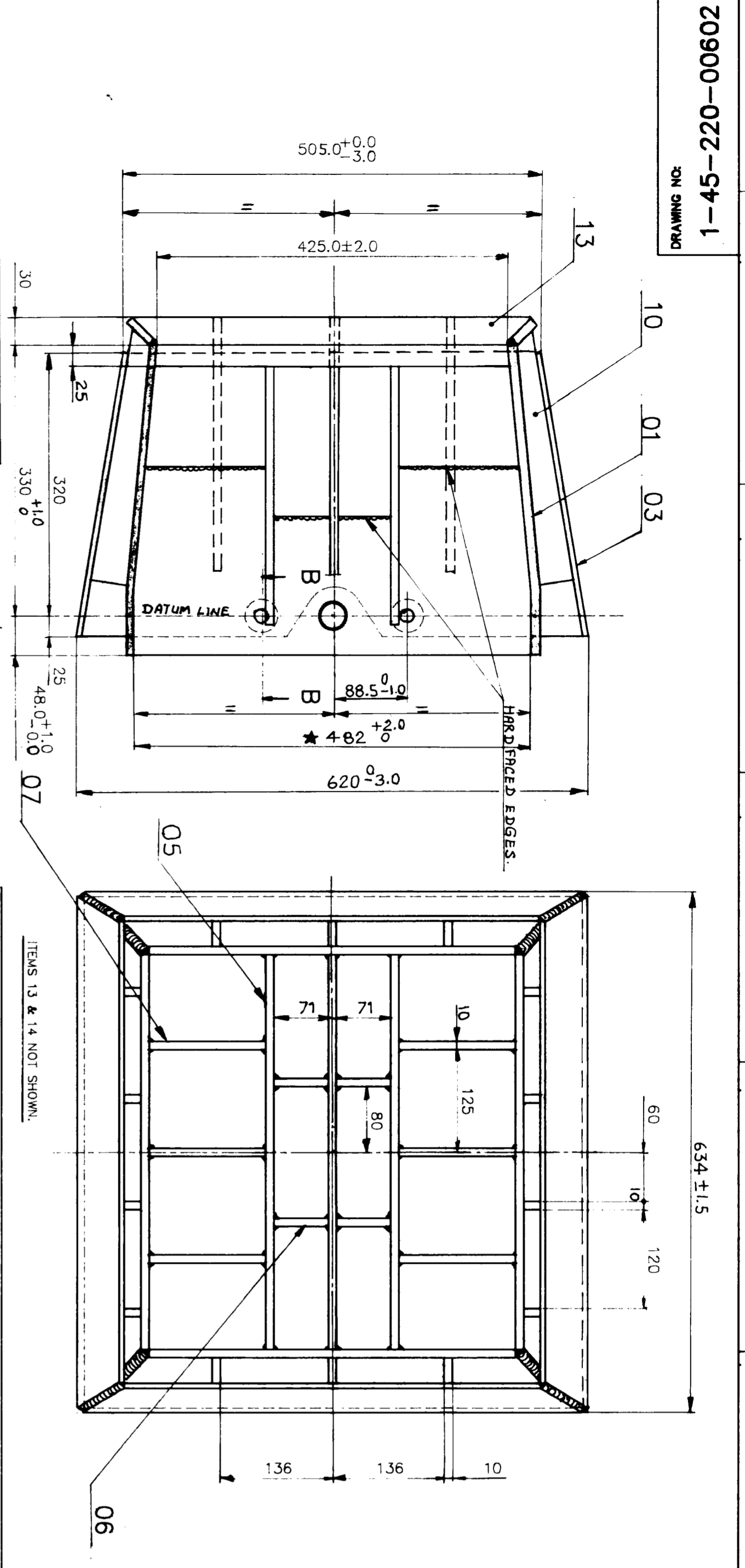
**Bharat Heavy Electricals Ltd.,**  
BOILER PLANT UNIT  
TIRUCHIRAPALLI-620 014

SCALE: **NTS**

**DIVIDER PLATE ASSY.**

CARD CODE: **U 01** DRAWING NO.: **1.45-220-00410**

CAUTION: THE INFORMATION ON THIS DOCUMENT IS THE PROPERTY OF BHEL. IT MUST NOT BE USED DIRECTLY OR INDIRECTLY IN ANY MANNER DEVIANT FROM THE INTEREST OF BHEL.



- NOTES:
- FOR ITEM 05 SHADY AREA TO BE HARD FACED (3 TO 5 MM THICK) ON BOTH SIDES OF THE PLATE AND ALSO ON LEADING EDGES.
  - DRILLED HOLES TO BE FREE OF BURRS.
  - USE ELECTRODE E 310 OR EQUIVALENT FOR ALL WELDS.
  - FOR WELDING DETAILS REFER DRG. 4.45.000.00975

ITEM NO.	DESCRIPTION	QTY	UNIT	REMARKS
01	PL 10 X 32 X 533	1	PC	
02	PL 10 X 32 X 482	1	PC	
03	PL 8 X 348 X 808	1	PC	
04	PL 8 X 350 X 822	1	PC	
05	PL 10 X 88 X 178	1	PC	
06	PL 10 X 310 X 533	1	PC	
07	PL 10 X 128 X 144	1	PC	
08	PL 10 X 32 X 100	1	PC	
09	PL 10 X 24 X 180	1	PC	
10	PL 10 X 42 X 315	1	PC	
11	ROUND DIA 40 : 18.5	1	PC	
12	DRILL BIT BEARING DIA 47 : 17	1	PC	

**Bharat Heavy Electricals Ltd**  
 TRUCHIRAPPALI - 823014

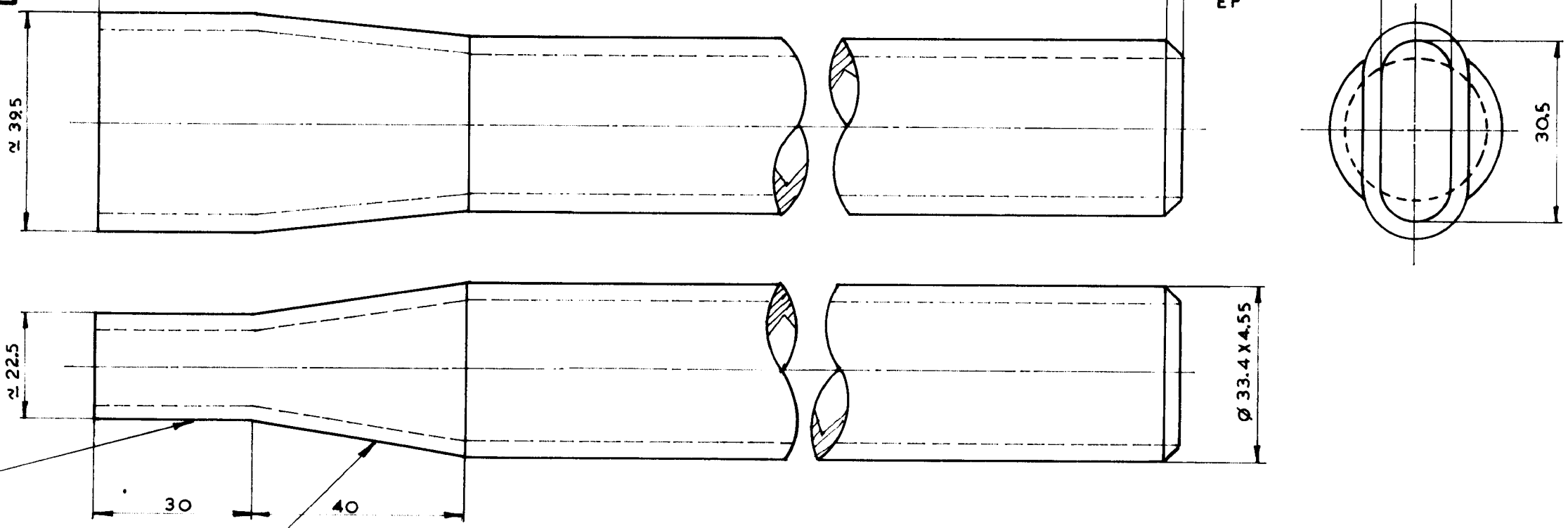
COAL NOZZLE TIP

1-45-220-00602

FIRST ANGLE PROJECTION (ALL DIMENSIONS ARE IN MILLIMETRES)

76900-000-57-8

DRAWING NO.



FLATTEN THIS EDGE

SWAGE THIS PORTION

VARIANT NO.	ITEM NO.	DESCRIPTION	STD.	DRAWING NO.	ITEM NO.	MATL. CODE	A/C	UNIT	UNIT WT.	CS
					VAR. NO.	MATL. SPEC.		DI	QTY.	
02		TUBE D 33.4X4.55 ; 270				15 082 011 SA106 GR B			1.040	
01		TUBE D 33.4 X4.55 ; 118				15 082 011 SA106GR.B			0.540	

VARIANT NO.	L	WT.	REMARKS
02	270	1.040	
01	118	0.540	



REV.	DATE	ALTD:	REV.	DATE	ALTERED	CHECKED
02	03/08/89	C.S. Lehu	01	31-3-89	C.S. Lehu	C.S. Lehu
		CHD: S. NAKKEERAN	.. DIMNS. 118 & 270 WERE 138 & 290.			
			.. DIMNS 138 & 290 WERE 168 & 320			

TYPE OF PRODUCT OR NAME OF CUSTOMER/PROJECT

**Bharat Heavy Electricals Ltd.,**  
BOILER PLANT UNIT  
TIRUCHIRAPALLI - 620 014

DRN.	NAME	SIGN	DATE	NO OF VAR
	WENGADESAN	V. V. V.	19 08 87	
CHD.	MK. JAYAKUMAR		14/12/88	
APPD.	S. NAKKEERAN			

DEPT. CC	GRADE OF UNTOL DIM.	SCALE	WEIGHT (kg.)	REF. TO ASSY./OLD DRG.	ITEM NO.
129	Ø 1 M 1 F	1:1	-		

TITLE	CARD CODE	DRAWING NO.	REV.
TUBE - REACH ROD	U 01	3-45-000-00594	02

05-229/C

CAUTION: THE INFORMATION ON THIS DOCUMENT IS THE PROPERTY OF BHARAT HEAVY ELECTRICALS LIMITED. IT MUST NOT BE USED DIRECTLY OR INDIRECTLY IN ANY WAY DETRIMENTAL TO THE INTEREST OF THE COMPANY.

Size A3

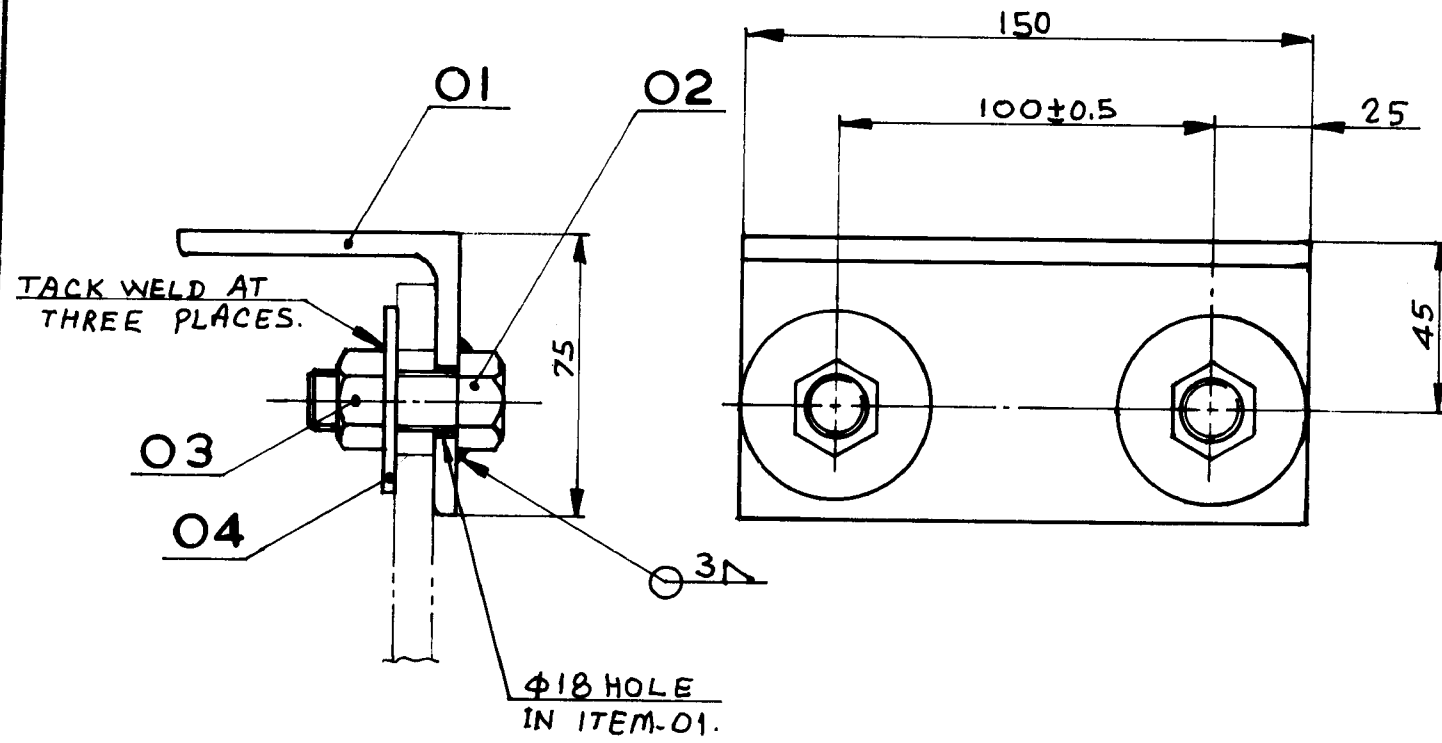
FIRST ANGLE PROJECTION (ALL DIMENSIONS ARE IN MILLIMETRES)

05-229/C

3.45.000.00614

DRAWING NO.

CAUTION: THE INFORMATION ON THIS DOCUMENT IS THE PROPERTY OF BHARAT HEAVY ELECTRICALS LIMITED. IT MUST NOT BE USED DIRECTLY OR INDIRECTLY IN ANY WAY DETRIMENTAL TO THE INTEREST OF THE COMPANY.



ITEM NO.	DESCRIPTION	STD.	DRAWING NO.	ITEM NO.	MATL CODE	A/C	UNIT	UNIT WT.	NO. OF
VAR. NO.				VAR. NO.	MATL. SPEC.		DI	QTY.	VAR.
04	WASHER PLN. 16	S	41411 16 000		41411 00 016			0.038	2
03	NUT HEX. M16	S	41304 16 000		41304 00 016			0.033	2
02	SCRU HEX. M16x40	S	41222 16 040		41222 16 040			0.092	2
01	A 75x75x6; 150				15 013 085 15 2062 Fe 410WA			10.00	1

TYPE OF PRODUCT  
OR NAME OF  
CUSTOMER/PROJECT



**Bharat Heavy Electricals Ltd.,**  
BOILER PLANT UNIT  
TIRUCHIRAPALLI - 620 014

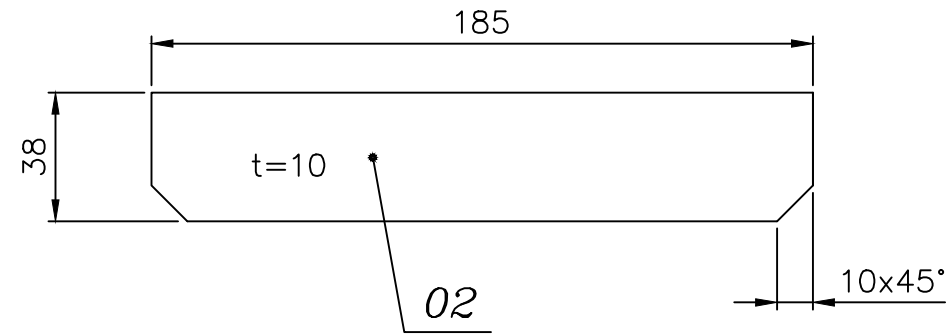
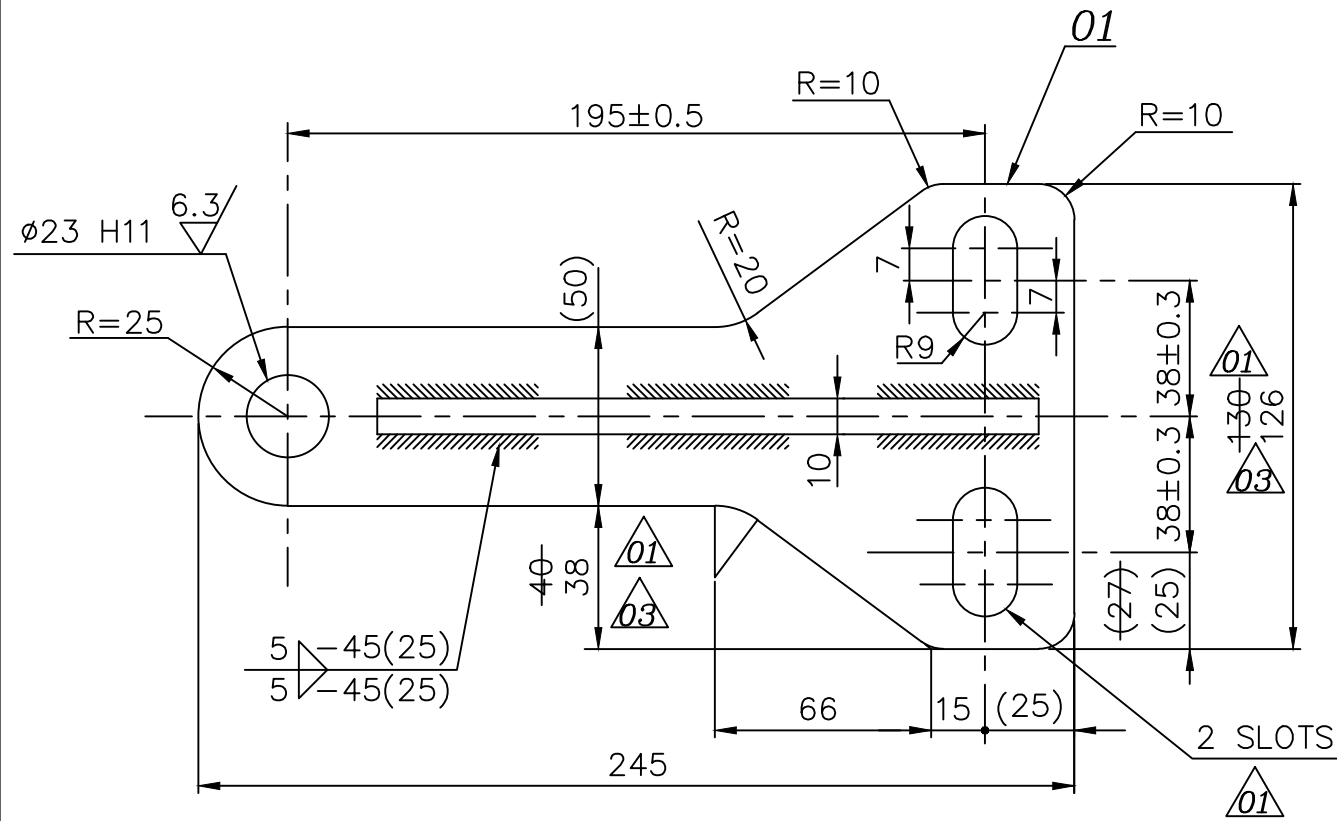
DRN.	NAME	SIGN.	DATE	NO. OF
C.S.S.R.	C.S.S.R.	[Signature]	15.12.87	VAR.
CHKD.	MKJ	[Signature]	30.12.82	
APPD.	SN	[Signature]	30.12.87	

REV.	DATE	ALTERED	CHECKED & APPD.	DEPT. CODE	GRADE OF UNTOL. DIM.	SCALE	WEIGHT (kg.)	REF. TO ASSY./OLD DRG.	ITEM NO.
01	25/12/97	[Signature]	[Signature]	CC	R/M/K	1:2	1.326		
MATH. SPEC. UPDATED FOR ITEM NO 01.				TITLE			CARD CODE	DRAWING NO.	REV.
				CN ARRESTER			U 01	3.45.000.00614	01

Size A3

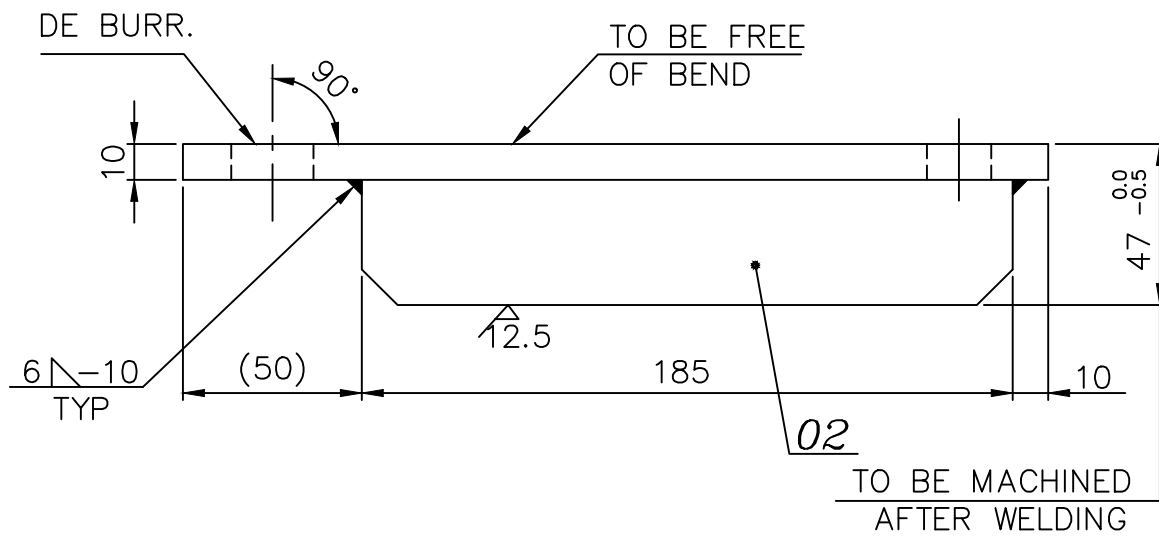
DRAWING NO: 3-45-220-00448

FOR TOLERANCES OF UNTOLERANCED DIMENSIONS DURING MANUFACTURE REFER PLANT STD.NO TP 023 0299



**NOTE: -**  
USE E7018 FOR ALL WELDS.

SIZE	LOWER LIMIT	UPPER LIMIT
Ø23 H11	0	0.130



VARIANT NUMBER	ITEM NUMBER	DESCRIPTION	STD	DRAWING NUMBER	ITEM NO	MATERIAL CODE	A/C/P	UNIT	UNIT WEIGHT	QTY
	02	PL.10X38X185			15 211 098	IS2062FE410A			0.550	1
	01	PL.10X126X245			15 211 098	IS2062FE410A			1.213	1

CAUTION: The information on this document is the property of BHARAT HEAVY ELECTRICALS LTD. It must not be used directly or indirectly in any way detrimental to the interest of the company.	TYPE OF PRODUCT OR NAME OF CUSTOMER/PROJECT							
	Bharat Heavy Electricals Ltd UNIT: HIGH PRESSURE BOILER PLANT TIRUCHIRAPALLI - 620014 355-055		DRN	C.S.S.R	SIGNATURE	-sd-	DATE	02.04.85
			CHD	KMP	SIGNATURE	-sd-	DATE	02.04.85
	APPD	KM Panicker	SIGNATURE	-sd-	DATE	04.04.85		
DEPT	FS	ALL DIMENSIONS ARE IN MM	PROJECTION	SCALE	WEIGHT (Kg)	REF TO ASSY / OLD DWG		
CODE	129			1:2	1.763			
TITLE						DRAWING NO :	REV	
CNT SUPPT BRACKET						3-45-220-00448	03	

REV	DATE	ALTERED :	MP	REV	DATE	ALTERED :	PDS
03	04-05-11	CHD & APPD:MTP		02	20-05-98	CHD & APPD: MTP	
01	13-11-86	CHD & APPD: MKJK					

ZONE .. DRAWN IN AUTOCAD AND UPDATED

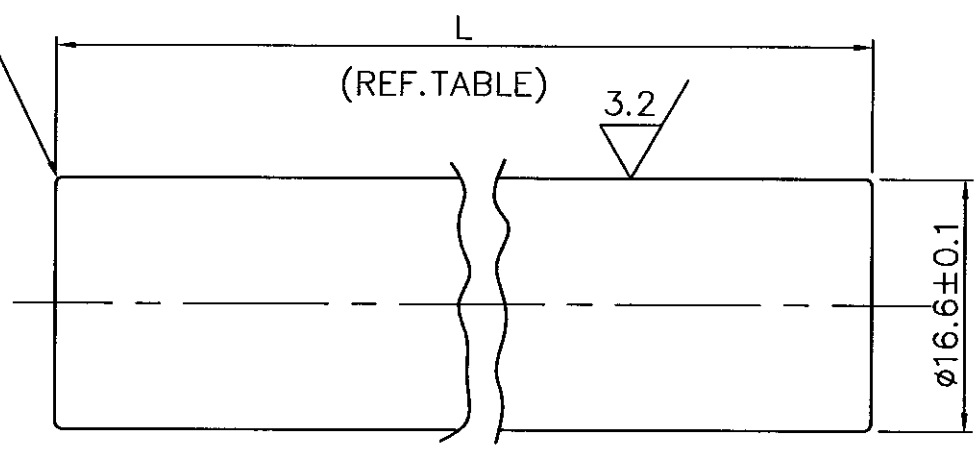
ZONE .. MATL SPECN UPDATED, CORRECTED.

ZONE .. 2 SLOTS WERE 2 HOLES Ø18. .. DIMNS 130 WAS 116; 27 WAS 20 AND 40 WAS 33.

CAUTION: THE INFO ON THIS DOCUMENT IS THE PROPERTY OF BHEL. IT MUST NOT BE USED DIRECTLY OR INDIRECTLY IN ANY WAY DETRIMENTAL TO THE INTEREST OF BHEL.

REV 01	DATE 31.3.93	ALTERED : CHD & APPD : -SD-	REV 02	DATE 09.2.96	ALTERED : CHD & APPD : -SD-	REV 03	DATE 03.4.04	ALTERED : CHD & APPD : K.R.M
..VAR.06 ADDED.			VAR.07 ADDED.			PREPARED IN AUTOCAD.		


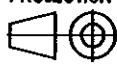
BREAK CORNERS



VAR.03 ADDED ON 070186  
VAR.04 ADDED ON 280186

VAR. NO	L	DESCRIPTION	STD	MATERIAL CODE	A/C/P	UNIT	UNIT WEIGHT
07	106	D16.6 ; 106		15 024 193			0.182
06	28	D16.6 ; 28		SA 479TY.304			
05	25	D16.6 ; 25		15 024 193			0.050
04	54	D16.6 ; 54		SA 479TY.304			
03	45	D16.6 ; 45		15 024 193			0.043
02	38	D16.6 ; 38		SA 479TY.304			
01	32	D16.6 ; 32		15 024 193			0.090
				SA 479TY.304			
				15 024 193			0.080
				SA 479TY.304			
				15 024 193			0.060
				SA 479TY.304			
				15 024 193			0.060
				SA 479TY.304			
VARIANT NUMBER		DESCRIPTION	STD	MATERIAL CODE	A/C/P	UNIT	UNIT WEIGHT
				MATERIAL SPECN			QUANTITY

TABLE

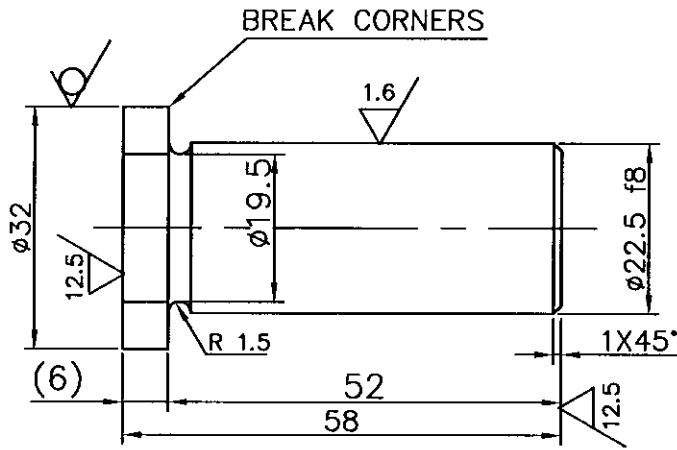
 355-056	Bharat Heavy Electricals Ltd UNIT: HIGH PRESSURE BOILER PLANT TIRUCHIRAPALLI - 620014		DRN	NAME CSSR	SIGNATURE -SD-	DATE 01.03.85
			CHD	SN	-SD-	01.03.85
			APPD	KC	-SD-	
DEPT FS	ALL DIMENSIONS ARE IN MM	PROJECTION 	SCALE 2:1	WEIGHT (Kg)	REF TO ASSY / OLD DWG	
CODE					TITLE REACH ROD PIN D 16.6	DRAWING NO : 4-45-000-00684
						REV 03

FIRST ANGLE PROJECTION (ALL DIMENSIONS IN MILLIMETRES)

CAUTION: THE INFO ON THIS DOCUMENT IS THE PROPERTY OF BHEL. IT MUST NOT BE USED DIRECTLY OR INDIRECTLY IN ANY WAY DETRIMENTAL TO THE INTEREST OF BHEL.

REV 01	DATE 2.6.98	ALTERED : -sd- CHD & APPD : -sd-	REV 02	DATE 20.02.04	ALTERED : V.R.R CHD & APPD : K.R.M
MATL. SPEC. UPDATED.			PREPARED IN AUTOCAD		

SIZE	LIMITS	
	LOWER	UPPER
ø22.5 f8	-0.053	-0.020



VARIANT NUMBER	DESCRIPTION	STD	MATERIAL CODE	MATERIAL SPECN	A/C/P	UNIT	D 32 ; 58	15 024 194	0.210
							SA479 TY304	UNIT WEIGHT	
									QUANTITY



**Bharat Heavy Electricals Ltd**  
UNIT: HIGH PRESSURE BOILER PLANT  
TIRUCHIRAPALLI - 620014

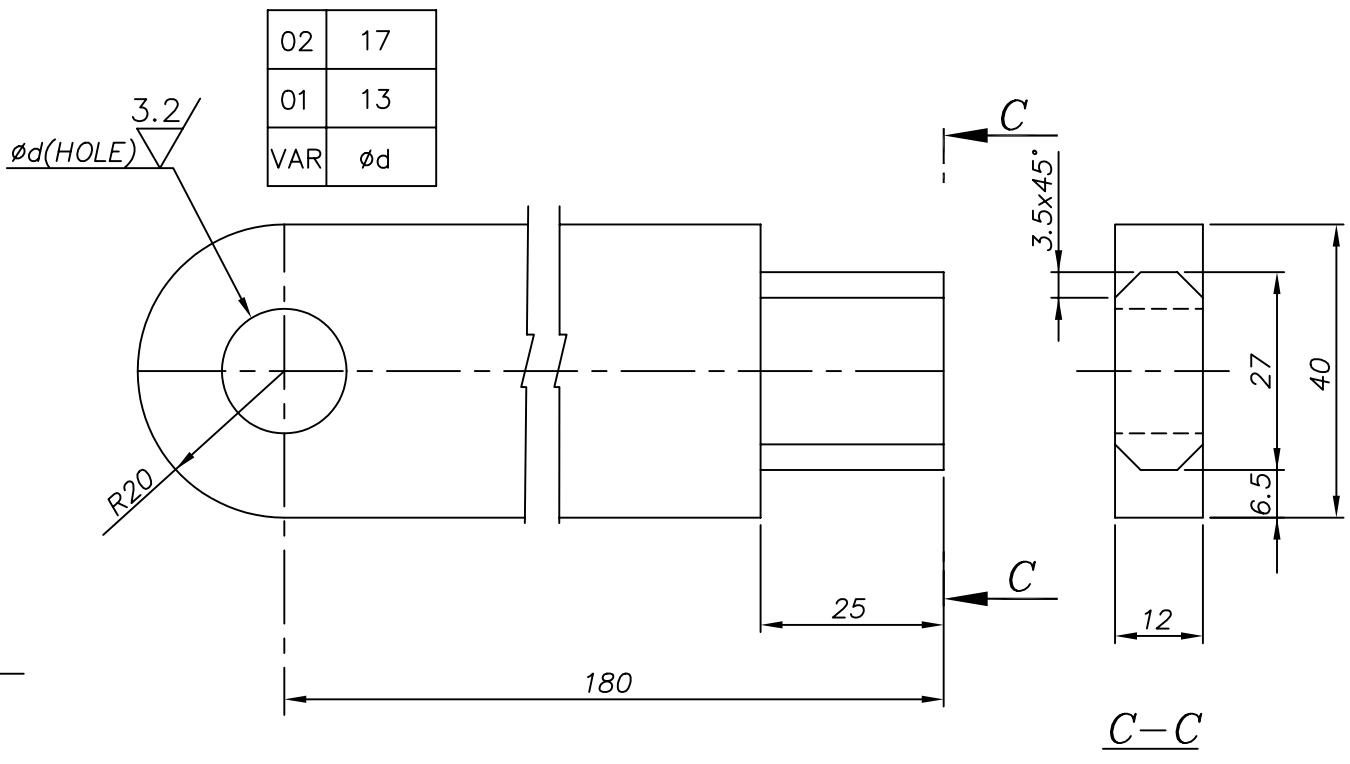
DRN	NAME P.DURAISAMY	SIGNATURE -sd-	DATE 13-11-86
CHD	M.K.JAYAKUMAR	-sd-	19-11-86
APPD	S.NAKKEERAN	-sd-	19-11-86

DEPT FS	ALL DIMENSIONS ARE IN MM	PROJECTION	SCALE 2:1	WEIGHT (Kg) 0.210
---------	--------------------------	------------	-----------	-------------------

TITLE	DRAWING NO :	REV
C.N.PIVOT PIN D 22.5 (NEW SUPPORT)	4-45-000-00809	02


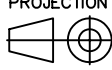
CAUTION: THE INFO ON THIS DOCUMENT IS THE PROPERTY OF BHEL. IT MUST NOT BE USED DIRECTLY OR INDIRECTLY IN ANY WAY DETRIMENTAL TO THE INTEREST OF BHEL

REV	DATE	ALTERED :	CSS	REV	DATE	ALTERED.	FOR TOLERANCES OF UNTOLERANCED DIMENSIONS DURING MANUFACTURE REFER PLANT STD. NO TP 023 0299
01	240306	CHD & APPD :	SVS			CHD.&APPD	
.. DRAWN IN AUTO-CAD.							



02	17
01	13
VAR	$\phi d$

02	PL 12x40x200	159421060000	A 588 GR.A	UNIT	0.750	
					0.750	
01	PL 12x40x200	159421060000	A 588 GR.A	UNIT	0.750	
					0.750	
VARIANT NUMBER	DESCRIPTION	STD	MATERIAL CODE	A/C/P	UNIT	UNIT WEIGHT
			MATERIAL SPECN			QUANTITY

 355-056	Bharat Heavy Electricals Ltd UNIT: HIGH PRESSURE BOILER PLANT TIRUCHIRAPALLI - 620014		DRN	NAME	SIGNATURE	DATE
			CHD	VVENGADESAN	-SD-	19AUG87
			APPD	MKJK	-SD-	141288
DEPT	ALL DIMENSIONS ARE IN MM	PROJECTION	SCALE	WEIGHT (Kg)	REF TO ASSY / OLD DWG	
FS			1:1	REF BOM		
CODE	129					
TITLE				DRAWING NO :		REV
EYE PLATE-REACH ROD				4-45-000-00886		01

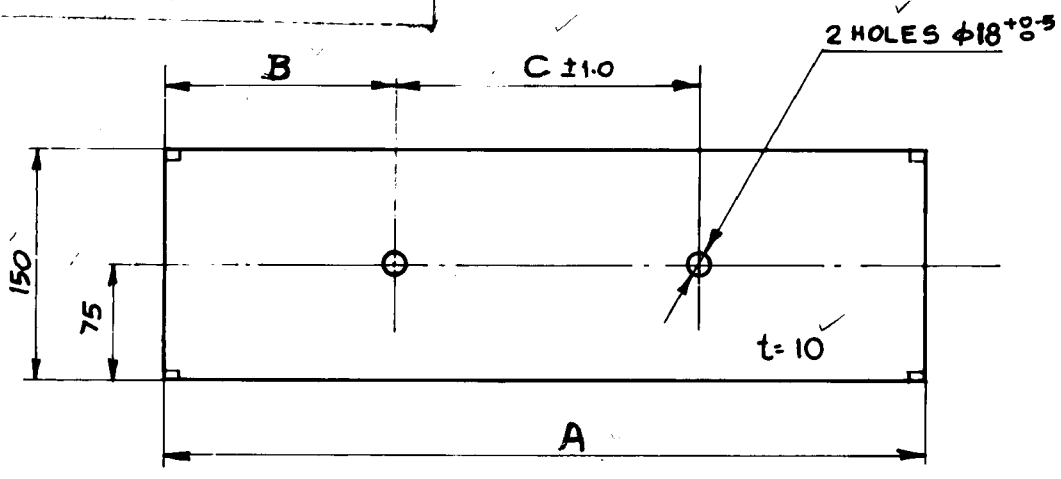
FIRST ANGLE PROJECTION (ALL DIMENSIONS IN MILLIMETRES)

06-243/C

CAUTION THE INFORMATION ON THIS DOCUMENT IS THE PROPERTY OF BHARAT HEAVY ELECTRICALS LTD. IT MUST NOT BE USED DIRECTLY OR INDIRECTLY IN ANY WAY DETRIMENTAL TO THE INTEREST OF THE COMPANY

REV 01	DATE 11-11-88	ALTERED C.S. Jeyaraj	REV 02	DATE 15-4-89	ALTERED C.S. Jeyaraj	REV 03	DATE 05-09-89	ALTERED P. Duraisamy
CHECKED <i>[Signature]</i>			CHECKED <i>[Signature]</i>			CHECKED <i>[Signature]</i>		
VAR. 02 ADDED.			VAR. 03 ADDED.			VAR. NO. 04 ADDED. DIMM "C" WAS 200.		

REV 04	DATE 26/12/97	ALT: C.S. Jeyaraj
CHKD & APPD. <i>[Signature]</i>		
MATH SPEC. UPDATED FOR ALL VARIANT.		



VAR. NO	"A"	"B"	"C"
01	500	150	200
02	450	125	200
03	350	75	200
04	300	75	150

1171.520

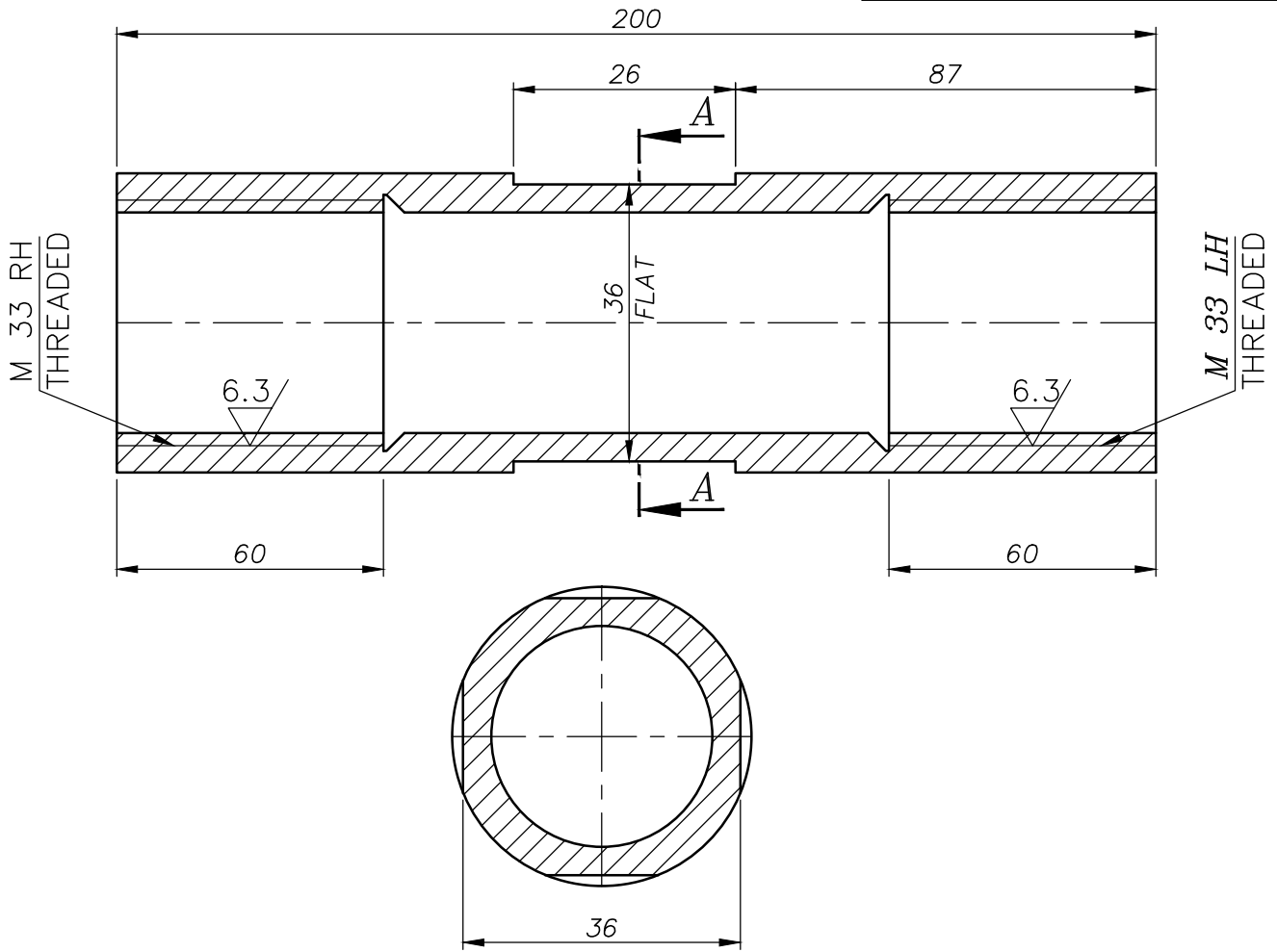
VARIANT No.	DESCRIPTION	MATL CODE	UNIT	UNIT WT
04	PL. 10x150x300	15 011 098		3.500
		15 2062 Fe 410WA		
03	PL 10x150x350	15 011 098		4.100
		15 2062 Fe 410WA		
02	PL 10x150x450	15 011 098		5.300
		15 2062 Fe 410WA		
01	PL. 10x150x500	15 011 098		5.850
		15 2062 Fe 410WA		
		MATL SPEC	A	QTY
			C	

		<b>Bharat Heavy Electricals Ltd.,</b>		DRN	NAME	SIGN	DATE
		BOILER PLANT UNIT		CHD	P. DURAISAMY.	<i>[Signature]</i>	011287.
		TIRUCHIRAPALLI-620 014		APPD	MKT	<i>[Signature]</i>	031287
DEPT. CC	GRADE OF UNTOL. DIM		SCALE	WEIGHT (kg)	REF TO ASSY / OLD DRG	ITEM NO.	
CODE 129	C/M/F			REFLP. 30M			
TITLE				CARD CODE	DRAWING NO.	REV	
<b>FRONT NOZ. SUPPORT.</b>				U 01	<b>4-45-325-00914</b>	04	
<b>HORI. PLATE</b>							

Size A4

THE INFOM ON THIS DOCUMENT IS THE PROPERTY OF BHEL.  
IT MUST NOT BE USED DIRECTLY OR INDIRECTLY  
IN ANY WAY DETRIMENTAL TO THE INTEREST OF BHEL.

REV 01	DATE 310389	ALTERED : CHD & APPD : MKJK	CSS	REV 02	DATE 240306	ALTERED. CHD.&APPD SVS	CSS	REV 03	DATE 05.07.10	ALTERED. CHD.&APPD FB	KA
.. DIMNS. 60,26,87&200 WERE .. 50,40,55&150 RESPECTIVELY. .. SEC.AA ADDED; FLAT 36 WAS 40.				.. DRAWN IN AUTO-CAD. .. DRAWING UPDATED.				MATL.CODE & WEIGHT ALTERED.			
								REV 04 240910 CHD.&APPD F.B. V.K.S.			
DRAWING DESCRIPTION ALTERED.											



SEC-AA

VARIANT NUMBER	TU D 44.5x9:L=200	STD	154890520000	NO	1.656
			SA 213 T22		UNIT WEIGHT
DESCRIPTION			MATERIAL CODE	A/C/P UNIT	QUANTITY
			MATERIAL SPECN		



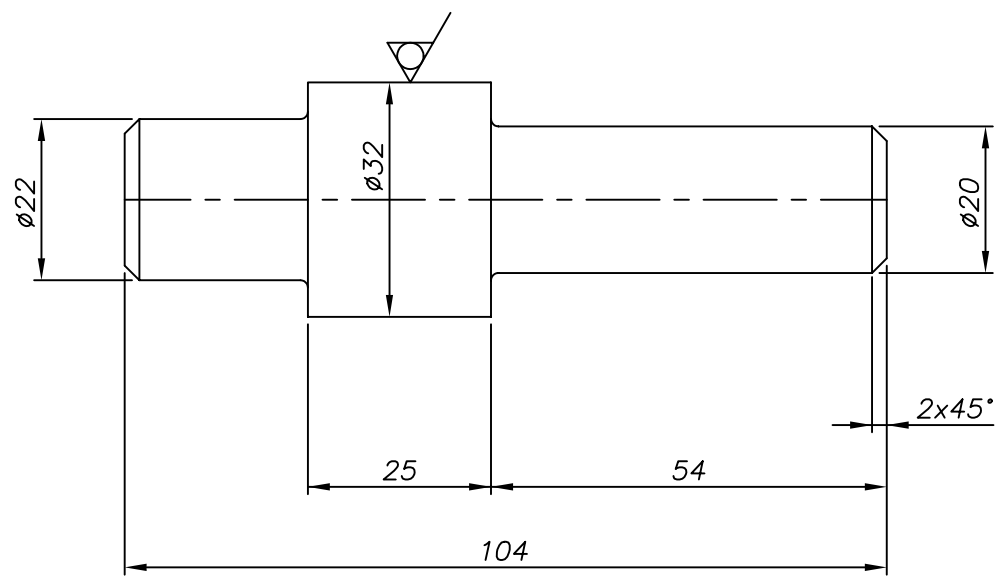
Bharat Heavy Electricals Ltd  
UNIT: HIGH PRESSURE BOILER PLANT  
TIRUCHIRAPALLI - 620014

DRN	NAME C.S.S.R	SIGNATURE -SD-	DATE
CHD	MKJK	-SD-	141287
APPD	SN	-SD-	151287



DEPT FS	ALL DIMENSIONS ARE IN MM	PROJECTION	SCALE NTS	WEIGHT (Kg) 1.656	REF TO ASSY / OLD DWG
CODE 129					
TITLE <b>SLEEVE-REACH ROD</b>					DRAWING NO : <b>4-45-000-00961</b>
					REV <b>04</b>

THE INFORM ON THIS DOCUMENT IS THE PROPERTY OF BHEL. IT MUST NOT BE USED DIRECTLY OR INDIRECTLY IN ANY WAY DETRIMENTAL TO THE INTEREST OF BHEL.

REV	DATE	ALTERED :	CSS	REV	DATE	ALTERED.	FOR TOLERANCES OF UNTOLERANCED DIMENSIONS DURING MANUFACTURE REFER PLANT STD. NO TP 023 0299
01	240306	CHD & APPD :	SVS			CHD.&APPD	
.. DRAWN IN AUTO-CAD.							



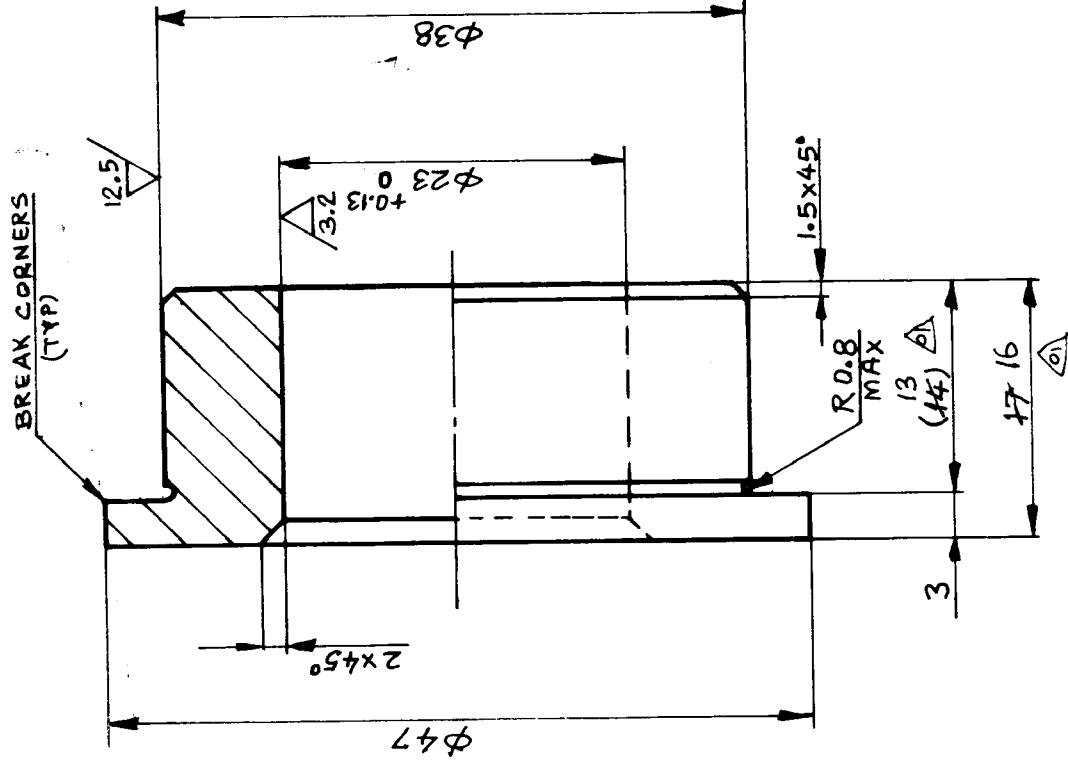
VARIANT NUMBER	DIA 32 ; 104	STD	153391400000	A/C/P	UNIT	0.400
			SA 105			
	DESCRIPTION		MATERIAL CODE			UNIT WEIGHT
			MATERIAL SPECN			QUANTITY

 355-056	Bharat Heavy Electricals Ltd UNIT: HIGH PRESSURE BOILER PLANT TIRUCHIRAPALLI - 620014		DRN	NAME CSSR	SIGNATURE -SD-	DATE
			CHD	MKJK	-SD-	141288
			APPD	SN	-SD-	151288
DEPT FS	ALL DIMENSIONS ARE IN MM	PROJECTION 	SCALE 1:1	WEIGHT (Kg) 0.400	REF TO ASSY / OLD DWG	
CODE 129	TITLE <i>END PIN-REACH ROD</i>			DRAWING NO : <i>4-45-000-00963</i>		REV <i>01</i>

CAUTION THE INFORMATION ON THIS DOCUMENT IS THE PROPERTY OF BHARAT HEAVY ELECTRICALS LTD. IT MUST NOT BE USED DIRECTLY OR INDIRECTLY IN ANY WAY DETRIMENTAL TO THE INTEREST OF THE COMPANY

FIRST ANGLE PROJECTION (ALL DIMENSIONS IN MILLIMETRES)

REV 01	DATE 11/10/90	ALTERED [Signature]	REV 02	DATE	ALTERED
CHECKED & APPD: [Signature]			CHECKED		
Dimension altered as shown					



724436

D47; 16	15024159	0.150
DESCRIPTION	MATL CODE SA479 TY.304	UNIT WT
VARIANT	MATL SPEC	QTY
	A	
	C	



**Bharat Heavy Electricals Ltd.,**  
BOILER PLANT UNIT  
TIRUCHIRAPALLI-620 014

DEPT. CC	GRADE OF UNTOOL. DIM R/M/A	SCALE NTS	WEIGHT (kg) 0.150	REF TO ASSY FOLD DRG X	ITEM NO.
CODE 123					

CNT PIVOT BEARING

U 01

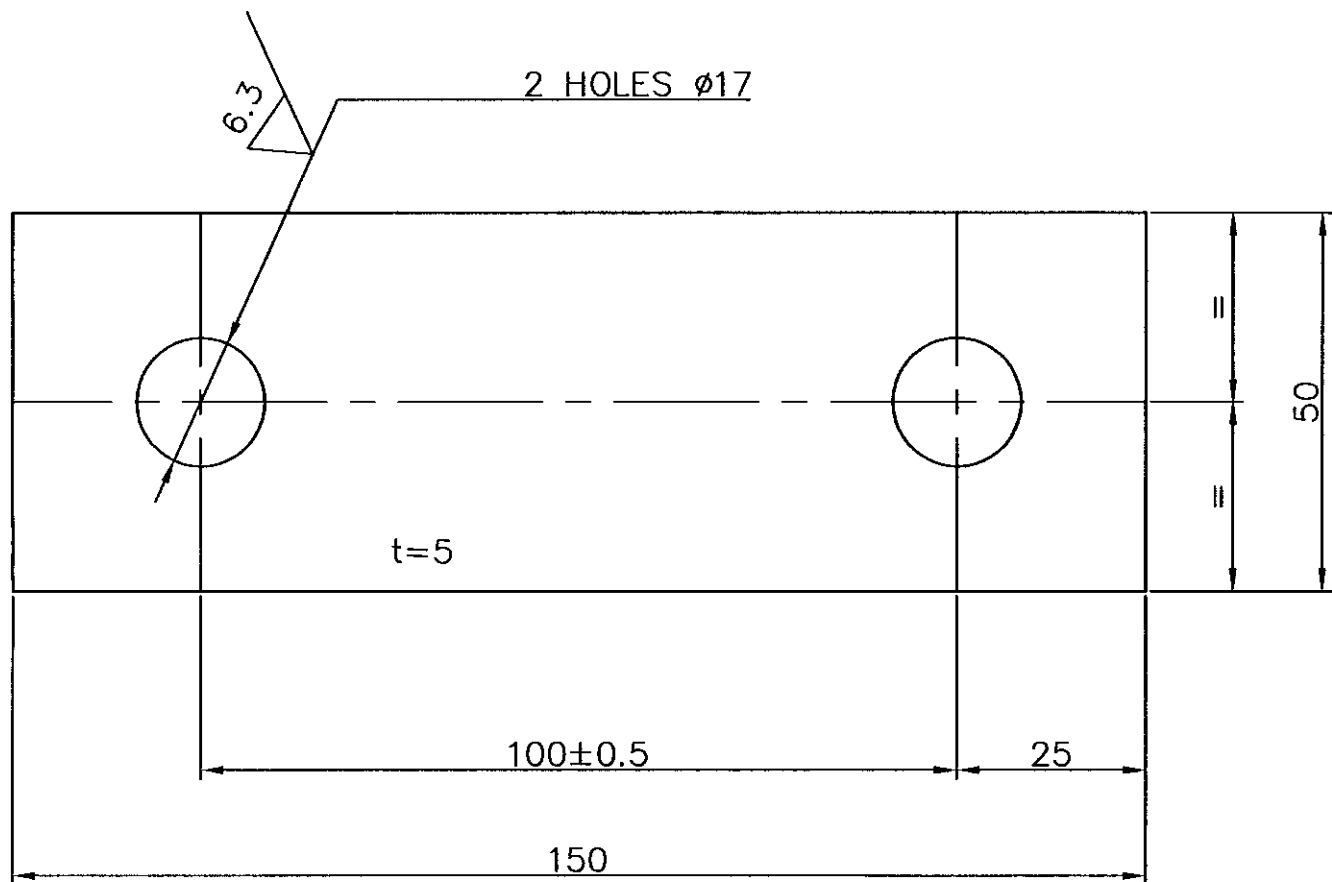
DRAWING NO.

4.45.220-00712

FIRST ANGLE PROJECTION (ALL DIMENSIONS IN MILLIMETRES)

CAUTION: THE INFO ON THIS DOCUMENT IS THE PROPERTY OF BHEL IT MUST NOT BE USED DIRECTLY OR INDIRECTLY IN ANY WAY DETRIMENTAL TO THE INTEREST OF BHEL

REV 01	DATE 25.12.97	ALTERED : -sd- CHD & APPD : -sd-	REV 02	DATE 21.02.04	ALTERED : V.R.R CHD & APPD : K.R.M
MATL. SPEC. UPDATED.			PREPARED IN AUTOCAD		

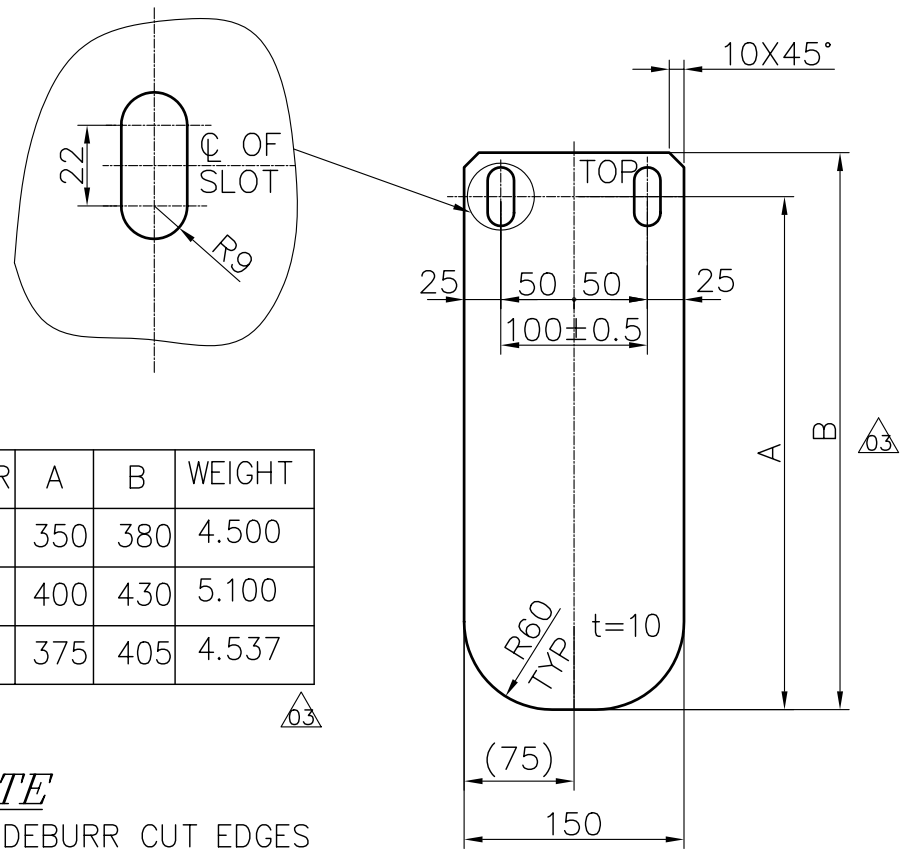


VARIANT NUMBER	DESCRIPTION	STD	15 011029	A/C/P	UNIT	0.300
			IS2062Fe410WA			UNIT WEIGHT
			MATERIAL CODE			QUANTITY
			MATERIAL SPECN			

<p>355-056</p>	<p><b>Bharat Heavy Electricals Ltd</b> UNIT: HIGH PRESSURE BOILER PLANT TIRUCHIRAPALLI - 620014</p>		DRN	NAME	SIGNATURE	DATE
			CHD	C.S.S.R	-sd-	02.04.85
			APPD	K.M.P	-sd-	04.04.85
DEPT FS	ALL DIMENSIONS ARE IN MM	PROJECTION	SCALE	WEIGHT (Kg)	REF TO ASSY / OLD DWG	
CODE			N.T.S	0.300		
TITLE				DRAWING NO :		REV
CN SUPPT. PL. WASHER				4-45-220-00713		02

THE INFO ON THIS DOCUMENT IS THE PROPERTY OF BHEL. IT MUST NOT BE USED DIRECTLY OR INDIRECTLY IN ANY WAY DETRIMENTAL TO THE INTEREST OF BHEL. CAUTION:


REV 01	DATE 12/2/94	ALTERED : C.S.S.R CHECKED : S.D.B	REV 02	DATE 25/12/94	ALTERED : -sd- CHECKED :-sd-	REV 03	DATE 23/3/05	ALTERED : K.R.M CHECKED : S.D.B
TITLE WAS REAR NOZZLE SUPPOT. VAR.NO: 02 ADDED.			MATL.SPEC. UPDATED FOR ALL VARIANT.			VAR.NO-03 ADDED VAR TABLE ADDED		



VAR	A	B	WEIGHT
01	350	380	4.500
02	400	430	5.100
03	375	405	4.537

**NOTE**  
DEBURR CUT EDGES

VARIANT NUMBER	DESCRIPTION	STD	MATERIAL CODE	A/C	UNIT	UNIT WEIGHT
03	PL.10X150X405		15-011-098			4.537
			IS2062 FE410WA			01
02	PL.10X150X430		15-011-098			5.100
			IS2062 FE410WA			01
01	PL.10X150X380		15-011-098			4.500
			IS2062 FE410WA			01
			MATERIAL SPECN			QUANTITY

		Bharat Heavy Electricals Ltd UNIT: HIGH PRESSURE BOILER PLANT TIRUCHIRAPALLI - 620014		DRN	C.S.S.R	SIGNATURE	-Sd-	DATE		NO. OF VAR
DEPT FS	GRADE OF UNTOL. DIM	SCALE		WEIGHT (Kg)	REF TO ASSY / OLD DWG	ITEM NO	No OF ITEMS			
CODE	C/M/F	1:5		REF.BOM						
TITLE				CARD CODE	DRAWING NO :				REV	
COAL NOZZLE SUPPORT				U 01	4-45-220-00740				03	

CAUTION THE INFORMATION ON THIS DOCUMENT IS THE PROPERTY OF BHARAT HEAVY ELECTRICALS LTD. IT MUST NOT BE USED DIRECTLY OR INDIRECTLY IN ANY WAY DETRIMENTAL TO THE INTEREST OF THE COMPANY

FIRST ANGLE PROJECTION (ALL DIMENSIONS IN MILLIMETRES)

REV	DATE	ALTERED	CHECKED
01	17/287	C.S. J. S. J.	J. S. J.

REV	DATE	ALTERED	CHECKED
02	5.288	C.S. J. S. J.	J. S. J.

REV	DATE	ALTERED	CHECKED
03	15.489	C.S. J. S. J.	J. S. J.

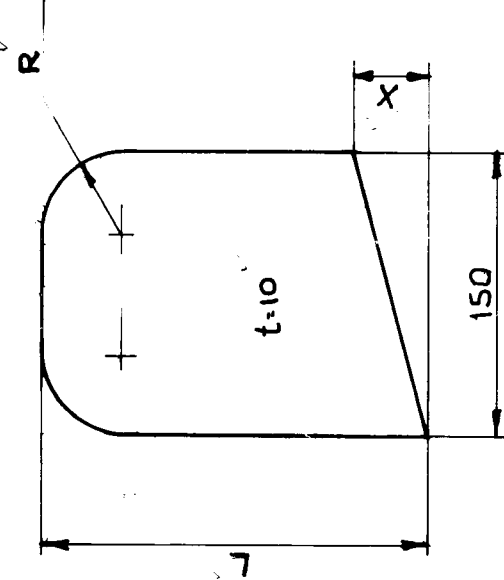
REV	DATE	ALTERED	CHECKED
03	15.489	C.S. J. S. J.	J. S. J.

--VAR.NO.03 INCLUDED.

--DIMN."L" WAS 152 IN VAR.03.

--VAR.04&05 ADDED

VAR.NO.	"L"	"R"	"X"
01	182	50	14
02	172	20	14
03	142	60	14
04	148	60	9
05	98	60	9
06	94	60	9



1171521

ADDED ON 5/19/89  
P. Prakashan

REV	DATE	DESCRIPTION	DRN	NAME	SIGN	DATE	UNIT WT	QTY
06		PL 10 X 94 X 150						1.200
05		PL 10 X 98 X 150						1.150
04		PL 10 X 148 X 150						1.750
03		PL 10 X 142 X 150						1.650
02		PL 10 X 150 X 172						2.000
01		PL 10 X 150 X 182						2.000
		DESCRIPTION						



**Bharat Heavy Electricals Ltd.,**  
BOILER PLANT UNIT  
TIRUCHIRAPALLI-620 014

DEPT. CC	GRADE OF UNTOOL. DIM	SCALE	WEIGHT (kg)	REF. BOM.	ITEM NO.
CODE 129	C/M/F				

TITLE  
**FRONT NOZ. SUPPORT  
VERTICAL PLATE.**

CARD CODE  
U 01

DRAWING NO.  
**4-45-325-00913**

Size A4

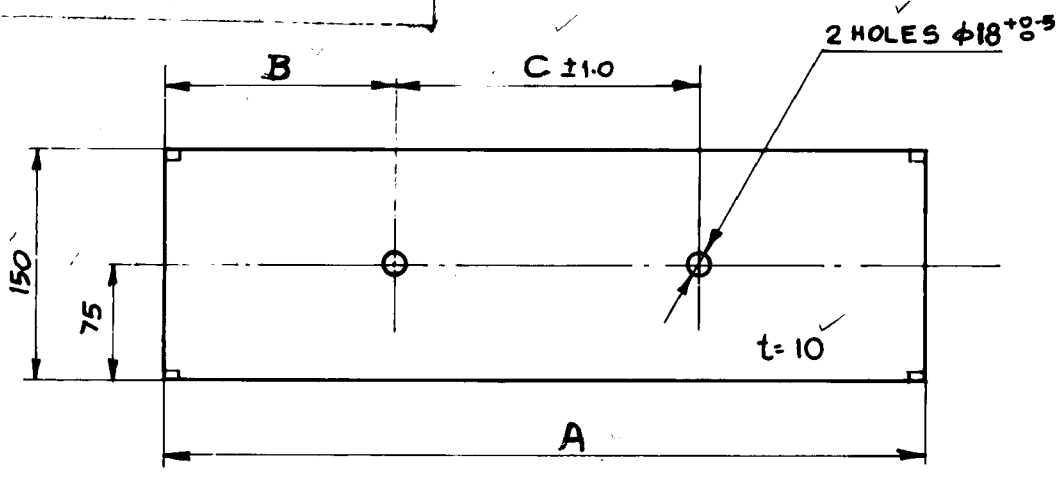
FIRST ANGLE PROJECTION (ALL DIMENSIONS IN MILLIMETRES)

06-243/C

CAUTION THE INFORMATION ON THIS DOCUMENT IS THE PROPERTY OF BHARAT HEAVY ELECTRICALS LTD. IT MUST NOT BE USED DIRECTLY OR INDIRECTLY IN ANY WAY DETRIMENTAL TO THE INTEREST OF THE COMPANY

REV 01	DATE 11-11-88	ALTERED C.S. Jeyaraj	REV 02	DATE 15-4-89	ALTERED C.S. Jeyaraj	REV 03	DATE 05-09-89	ALTERED P. Duraisamy
CHECKED <i>[Signature]</i>			CHECKED <i>[Signature]</i>			CHECKED <i>[Signature]</i>		
VAR. 02 ADDED.			VAR. 03 ADDED.			VAR. NO. 04 ADDED. DIMM "C" WAS 200.		

REV 04	DATE 26/12/97	ALT: C.S. Jeyaraj
CHKD & APPD. <i>[Signature]</i>		
MATH SPEC. UPDATED FOR ALL VARIANT.		



VAR. NO	"A"	"B"	"C"
01	500	150	200
02	450	125	200
03	350	75	200
04	300	75	150

1171.520

VARIANT No.	DESCRIPTION	MATL CODE	UNIT	UNIT WT
04	PL. 10x150x300	15 011 098		3.500
		15 2062 Fe 410WA		
03	PL 10x150x350	15 011 098		4.100
		15 2062 Fe 410WA		
02	PL 10x150x450	15 011 098		5.300
		15 2062 Fe 410WA		
01	PL. 10x150x500	15 011 098		5.850
		15 2062 Fe 410WA		
		MATL SPEC	A	QTY

		<b>Bharat Heavy Electricals Ltd.,</b> BOILER PLANT UNIT TIRUCHIRAPALLI-620 014		DRN P. DURAISAMY. CHD MKJ APPD SN	SIGN <i>[Signature]</i> <i>[Signature]</i> <i>[Signature]</i>	DATE 011287. 031287 3.1287
DEPT. CC	GRADE OF UNTOL. DIM C/M/F	SCALE	WEIGHT (kg)	REF TO ASSY / OLD DRG	ITEM NO.	
CODE 129			REFLP. 30M			
TITLE <b>FRONT NOZ. SUPPORT. HORI. PLATE</b>			CARD CODE U 01	DRAWING NO. <b>4-45-325-00914</b>	REV 04	

Size A4







