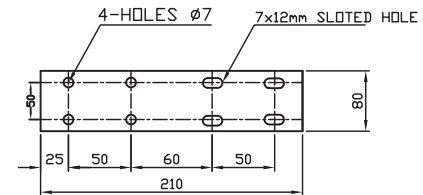
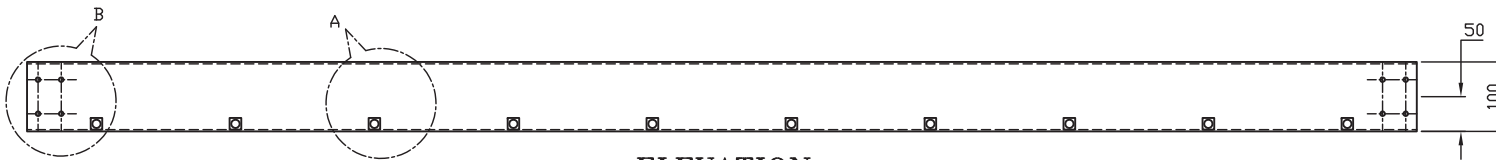


PLAN

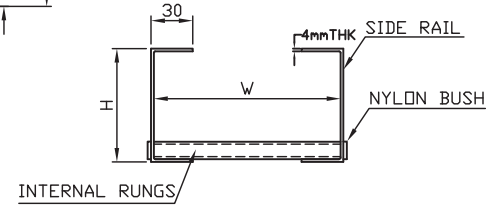


FRP COUPLER PLATE
SIZE: 80x210x4mm

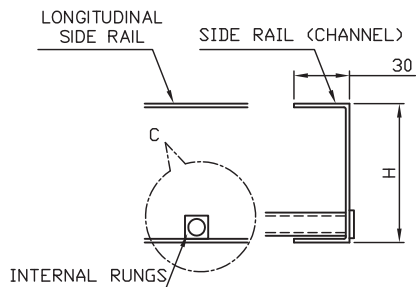
1NO. CABLE TRAY REQUIRED 4NOS. OF
COUPLER PLATES & 16 SETS OF SS HARDWARE



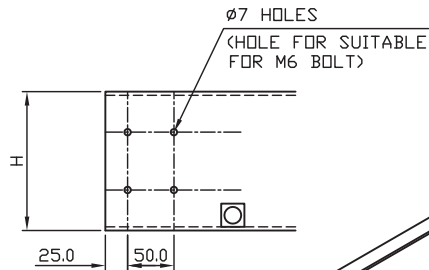
ELEVATION



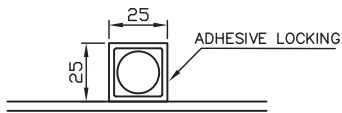
SIDE VIEW



DETAIL-A



DETAIL-B



DETAIL-C

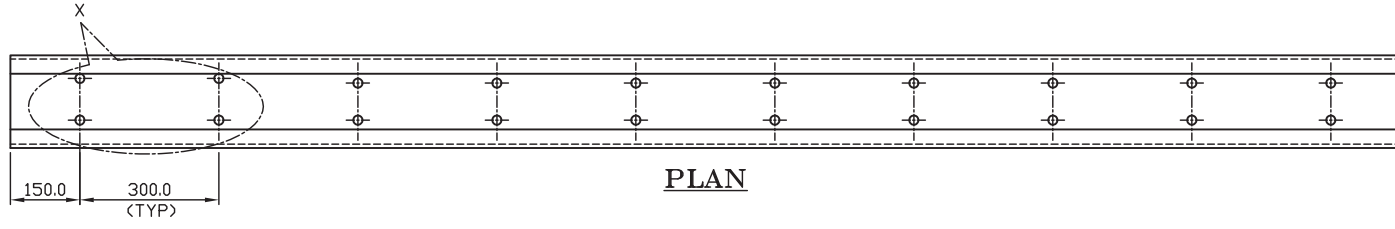


DETAIL-C

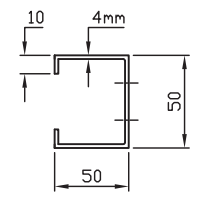
NOTES :
1. ALL DIMENSIONS ARE IN MM

W	H	THK
150mm	100mm	4mm
300mm	100mm	4mm
600mm	100mm	4mm

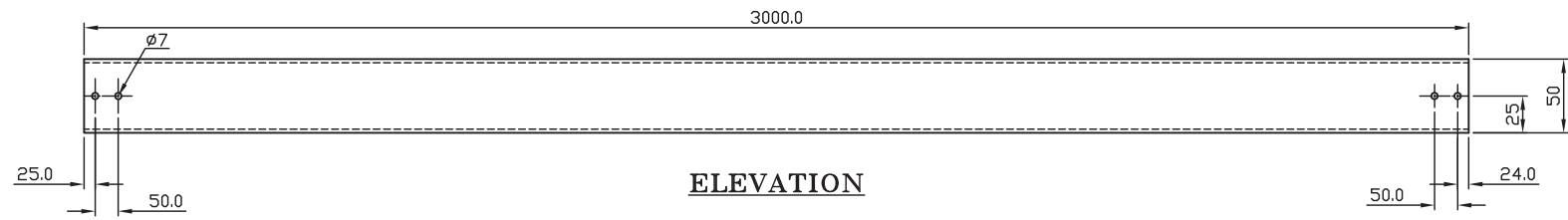
12 11 10 9 8 7 6 5 4 3 2 1 0



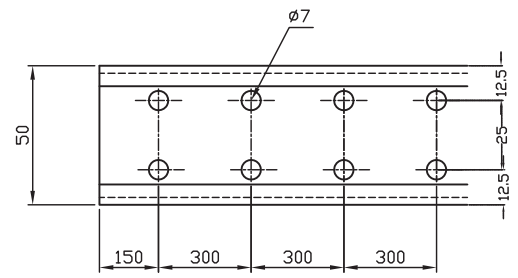
PLAN



SIDE VIEW

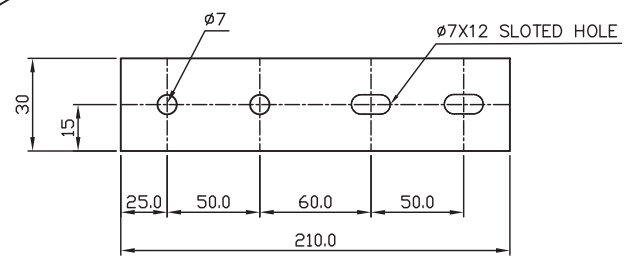
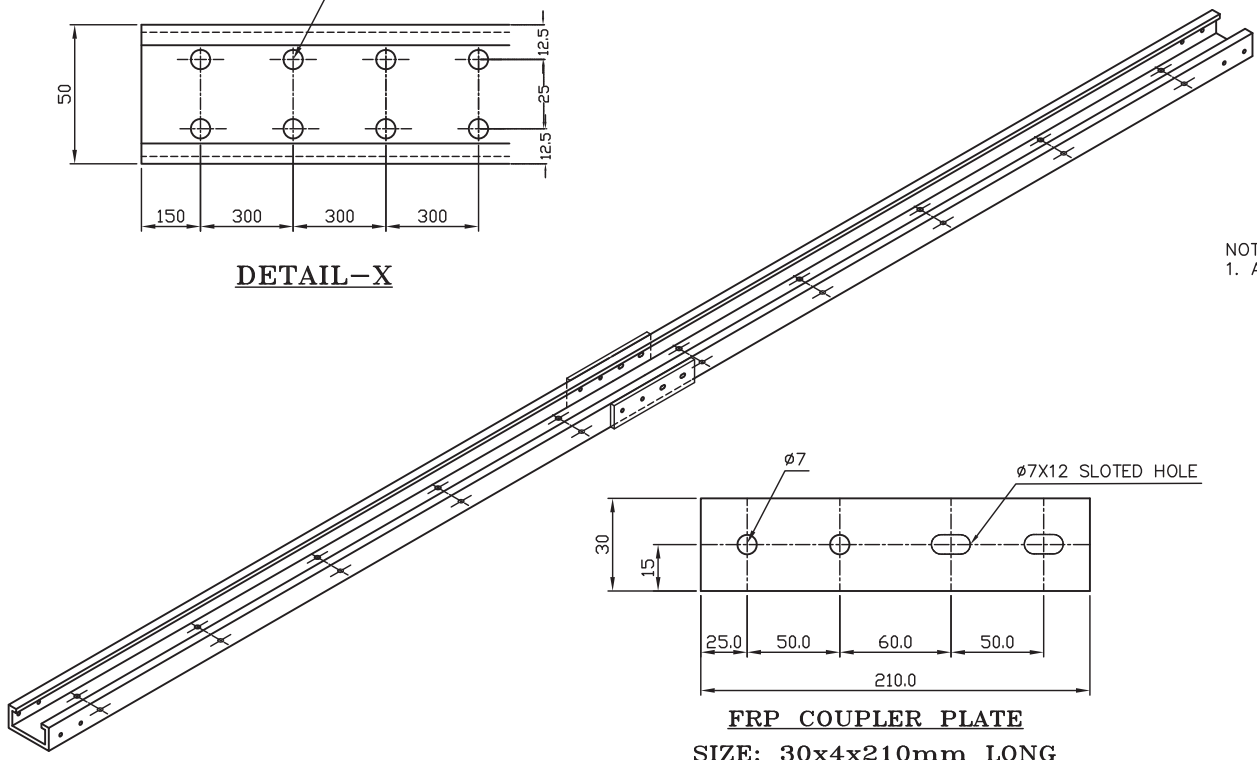


ELEVATION



DETAIL-X

NOTES :
1. ALL DIMENSIONS ARE IN MM



FRP COUPLER PLATE
SIZE: 30x4x210mm LONG

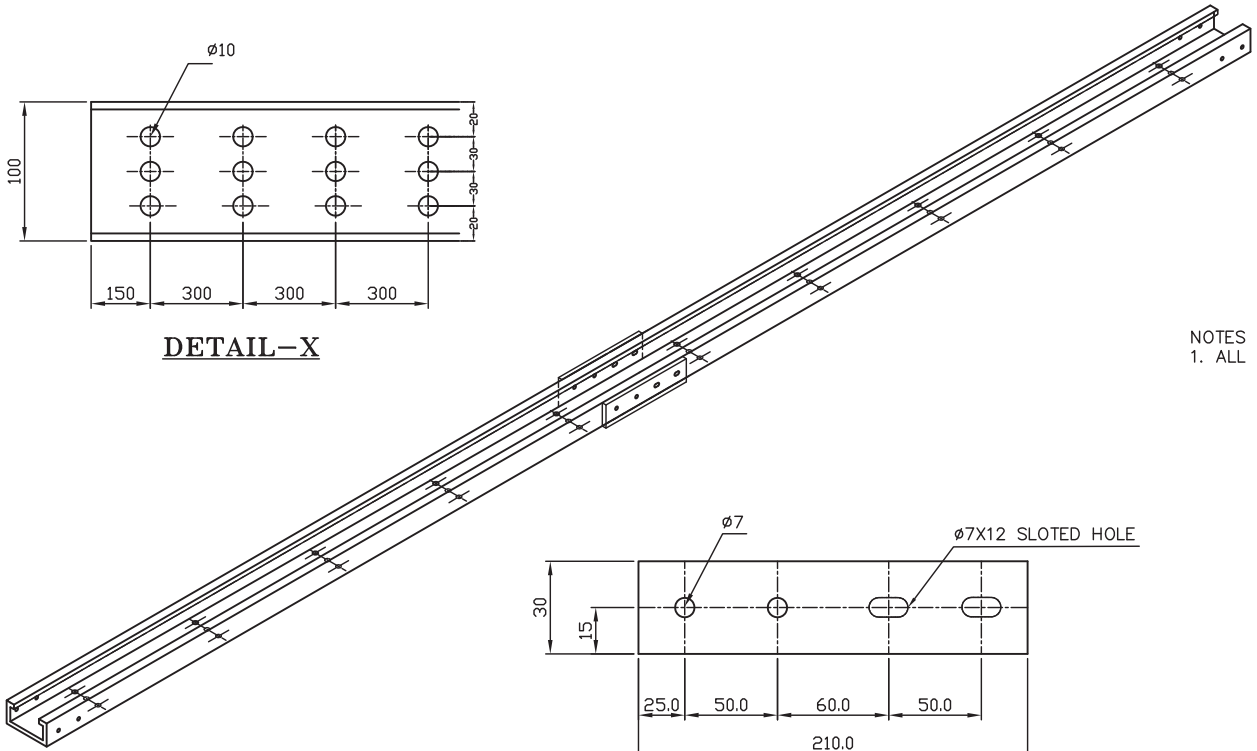
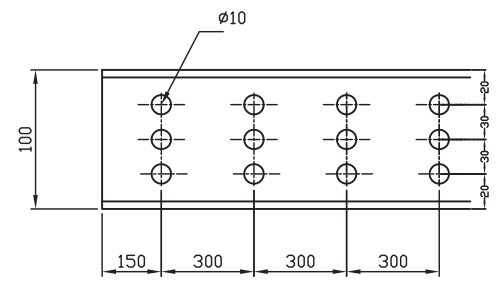
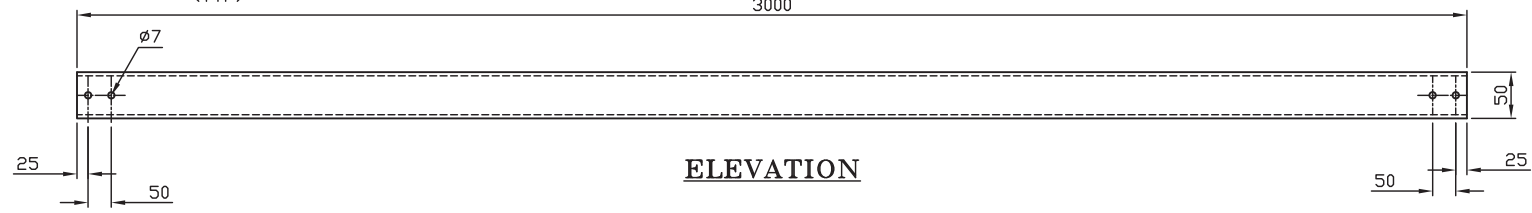
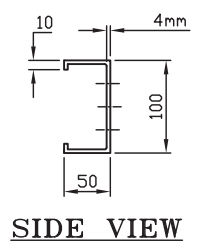
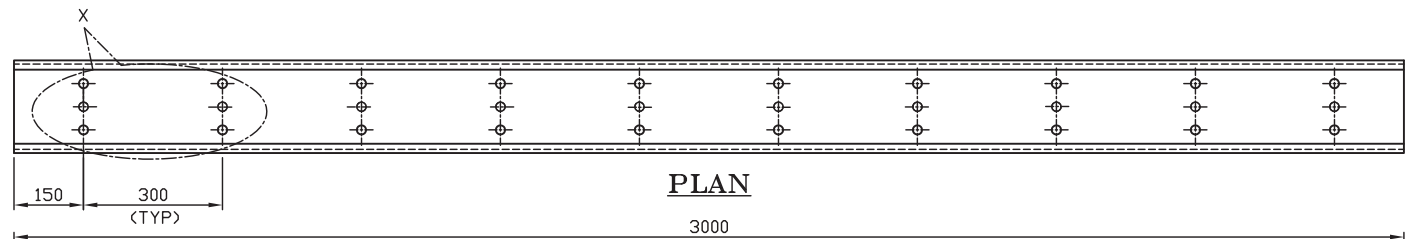
CABLE TRAY REQUIRED 8 SETS OF
SS HARDWARE

12 11 10 9 8 7 6 5 4 3 2 1 0

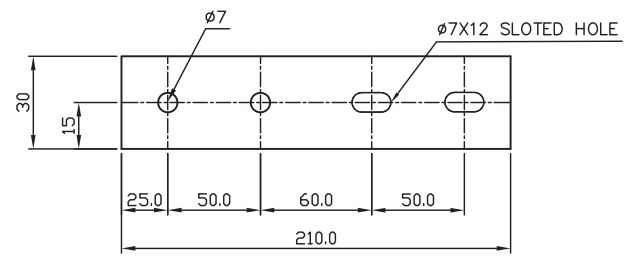
I
H
G
F
E
D
C
B
A

I
H
G
F
E
D
C
B
A

12 11 10 9 8 7 6 5 4 3 2 1 0



NOTES :
1. ALL DIMENSIONS ARE IN MM

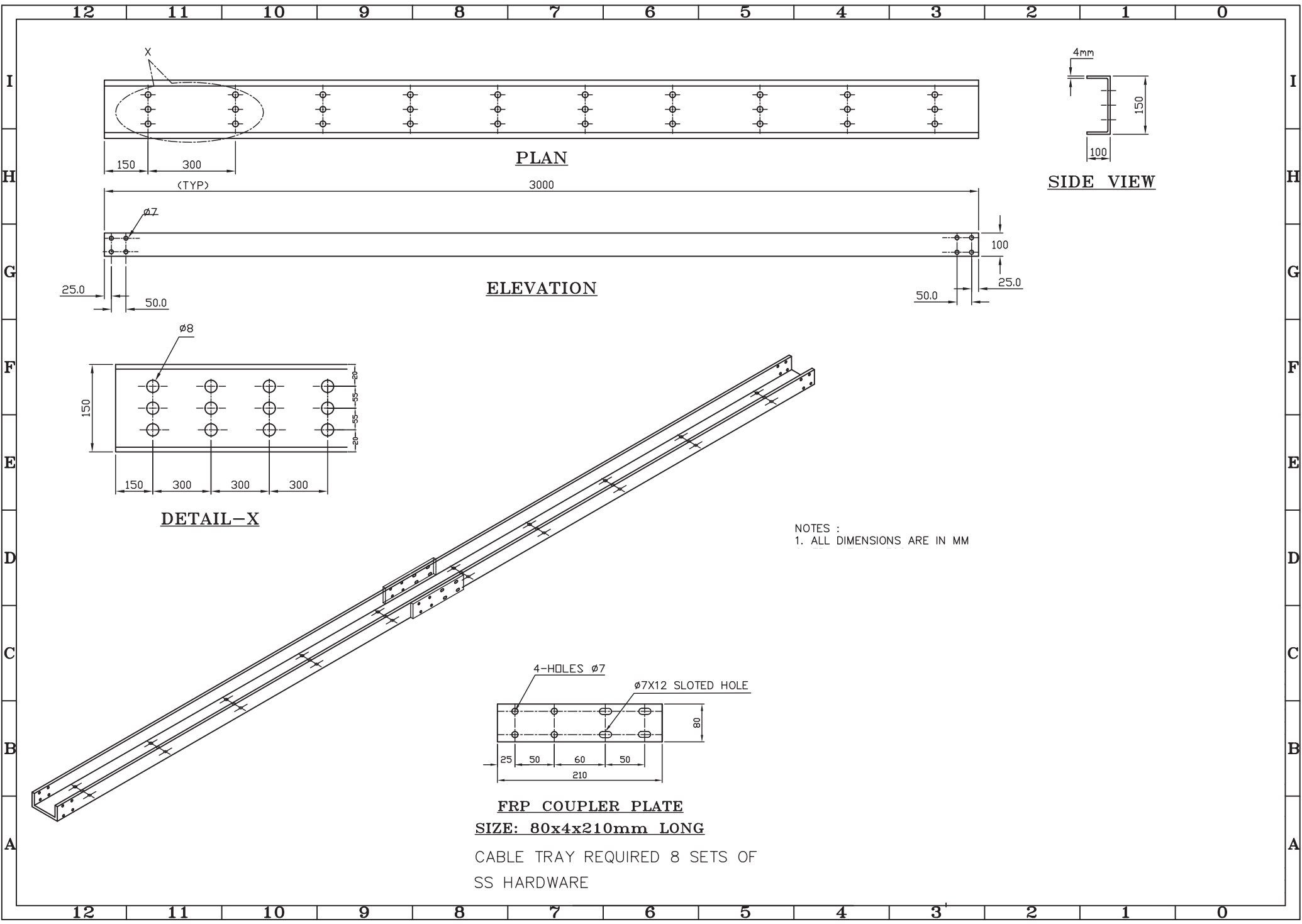


CABLE TRAY REQUIRED 8 SETS OF
SS HARDWARE

12 11 10 9 8 7 6 5 4 3 2 1 0

I
H
G
F
E
D
C
B
A

I
H
G
F
E
D
C
B
A



PLAN

SIDE VIEW

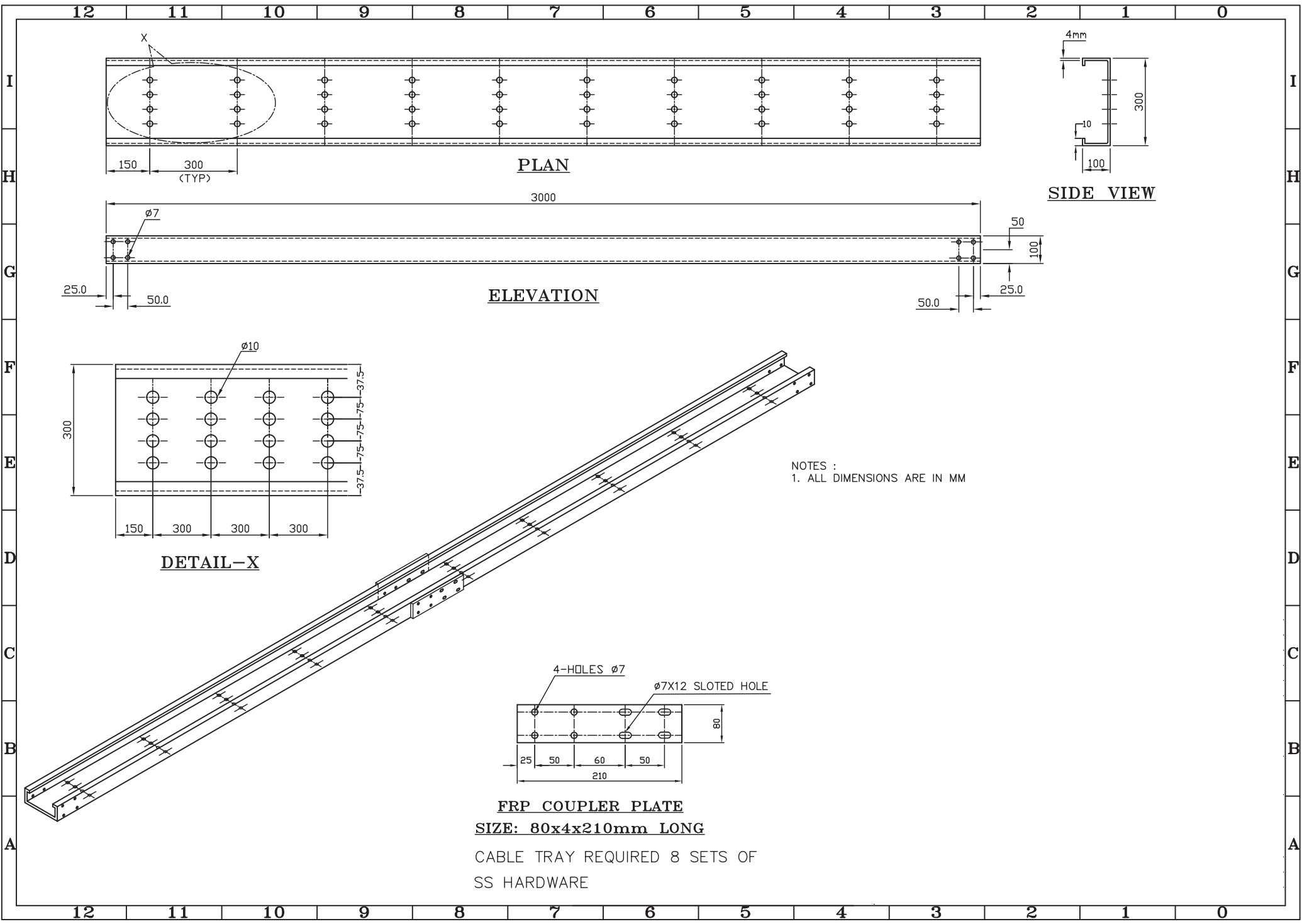
ELEVATION

DETAIL-X

NOTES :
1. ALL DIMENSIONS ARE IN MM

FRP COUPLER PLATE
SIZE: 80x4x210mm LONG

CABLE TRAY REQUIRED 8 SETS OF
SS HARDWARE



PLAN

SIDE VIEW

ELEVATION

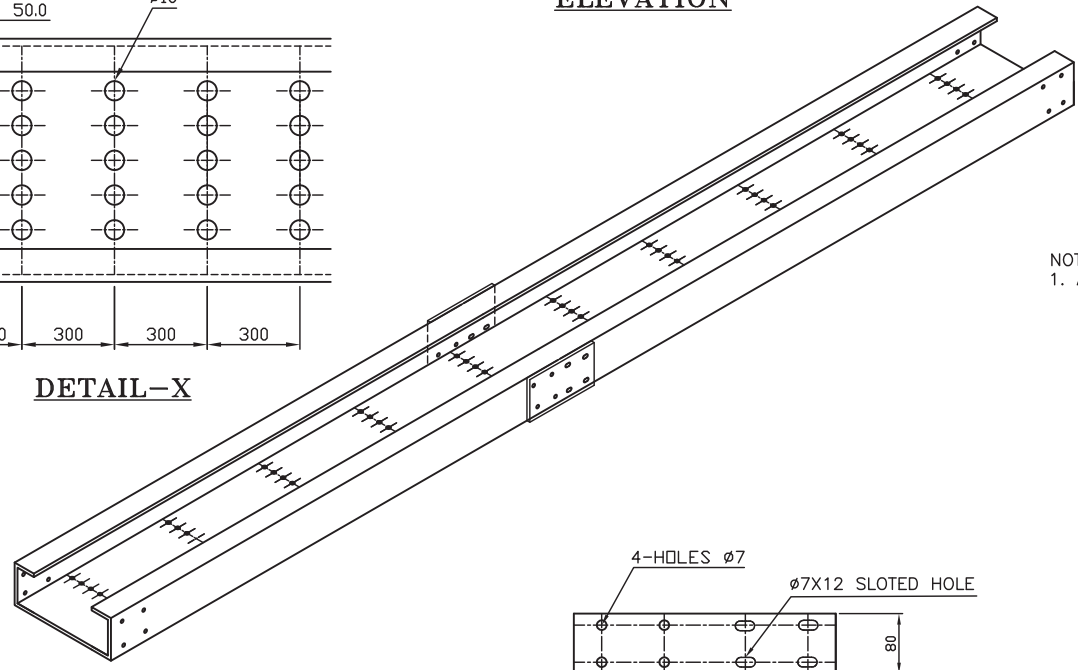
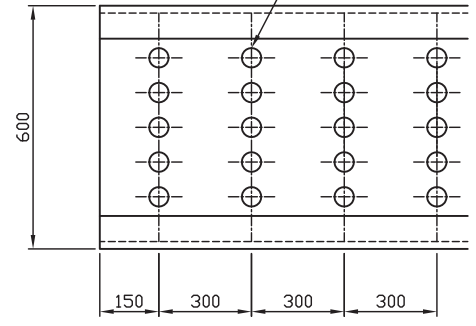
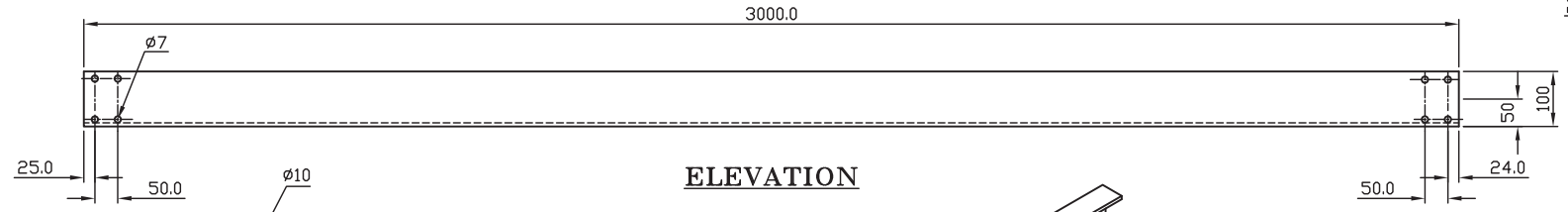
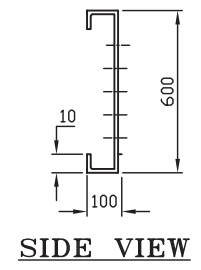
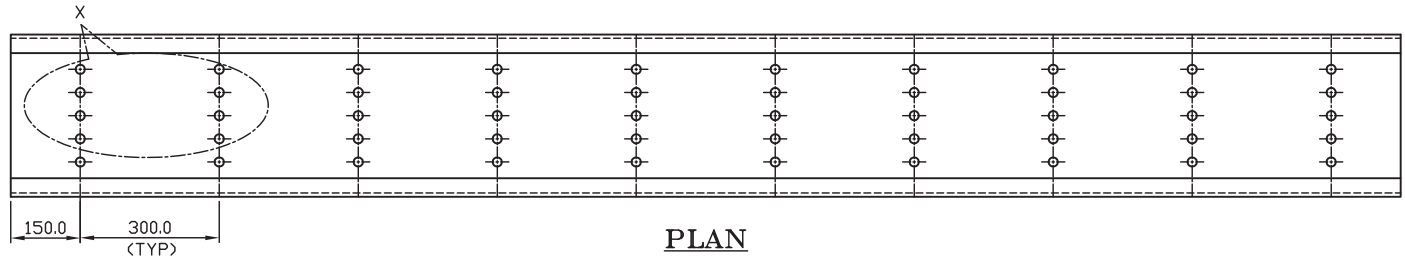
DETAIL-X

FRP COUPLER PLATE
SIZE: 80x4x210mm LONG

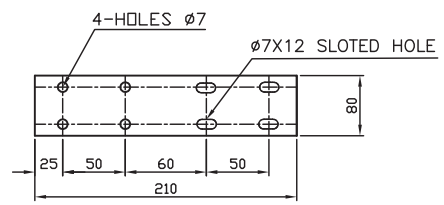
CABLE TRAY REQUIRED 8 SETS OF
SS HARDWARE

NOTES :
1. ALL DIMENSIONS ARE IN MM

12 11 10 9 8 7 6 5 4 3 2 1 0



NOTES :
1. ALL DIMENSIONS ARE IN MM



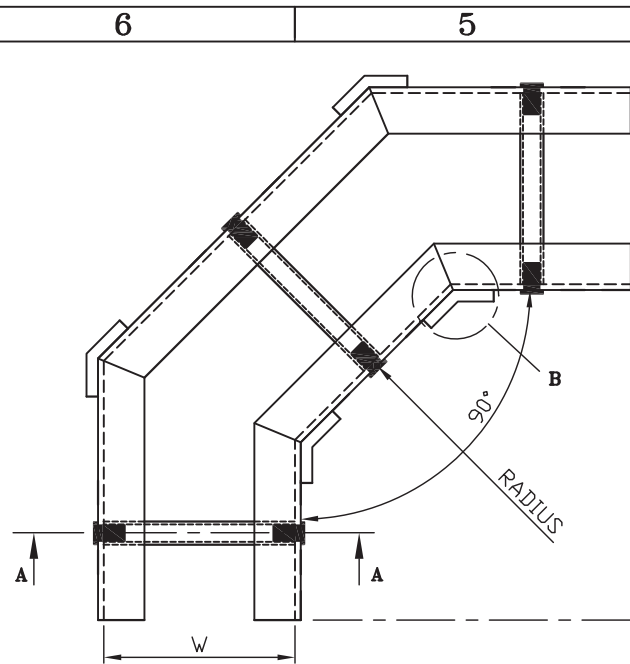
SIZE: 80x4x210mm LONG

CABLE TRAY REQUIRED 8 SETS OF
SS HARDWARE

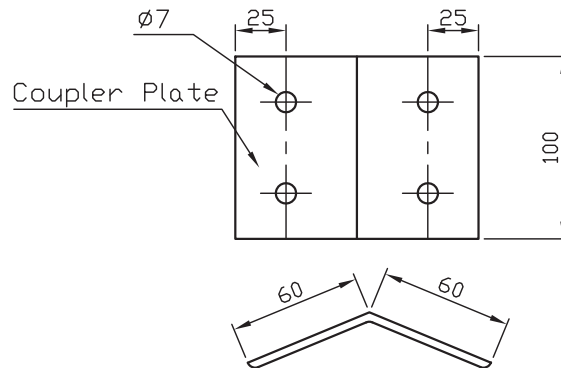
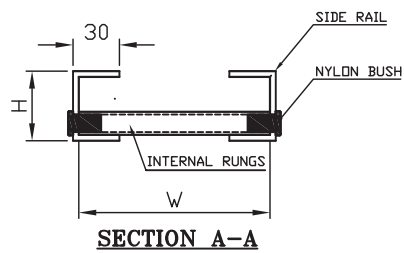
12 11 10 9 8 7 6 5 4 3 2 1 0

I
H
G
F
E
D
C
B
A

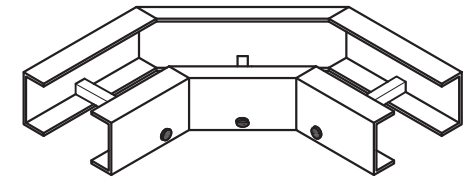
I
H
G
F
E
D
C
B
A



90° HORIZONTAL BEND LADDER TYPE



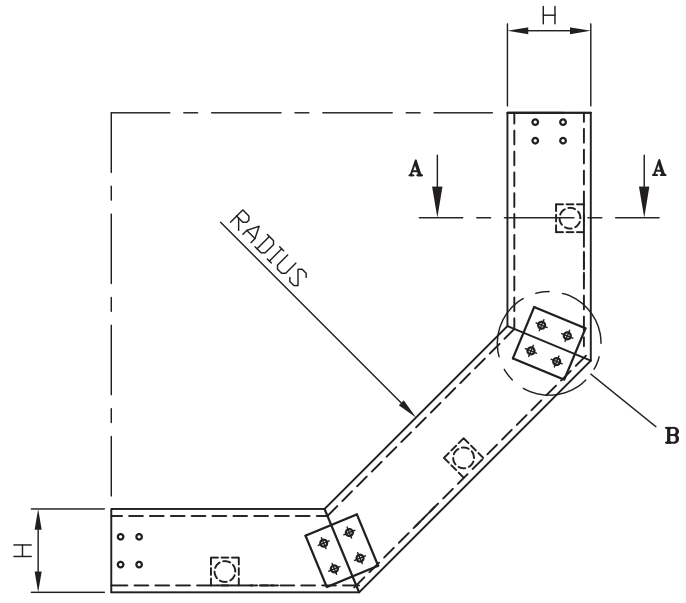
DETAIL-B



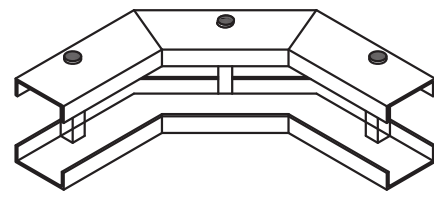
90° HORIZONTAL BEND

W	RADIUS	H	THK
150mm	600mm	100mm	4mm
300mm	600mm	100mm	4mm
600mm	600mm	100mm	4mm

NOTES :
1. ALL DIMENSIONS ARE IN MM



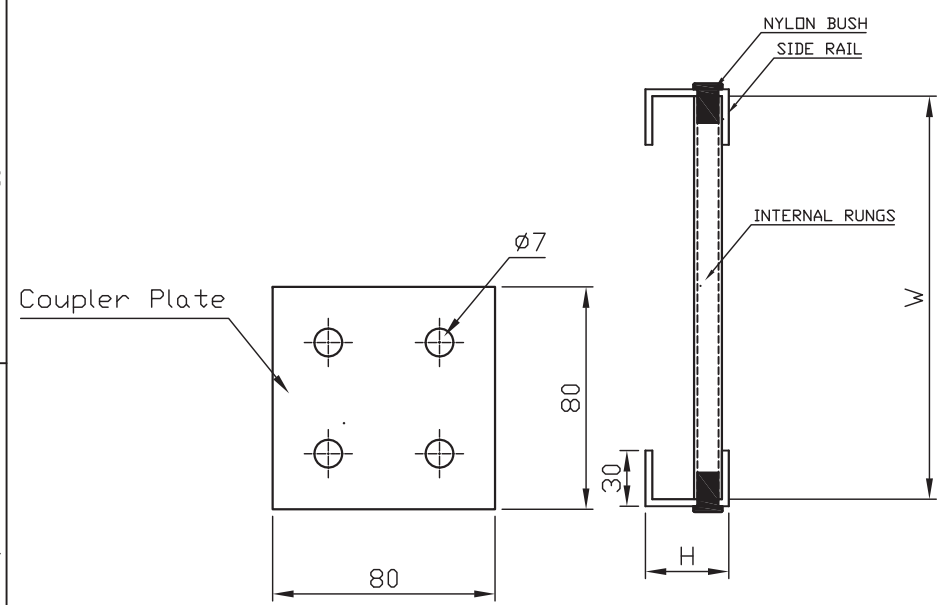
90° VERTICAL INSIDE BEND LADDER TYPE



90° VERTICAL INSIDE BEND

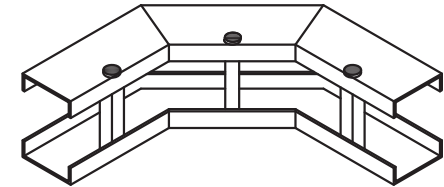
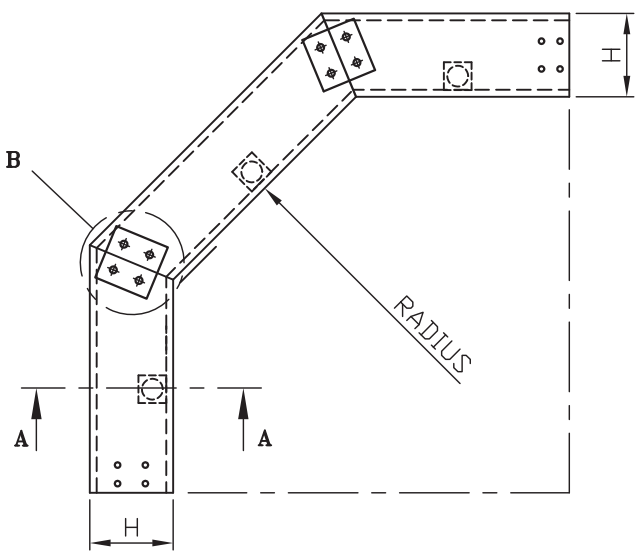
W	RADIUS	H	THK
150mm	600mm	100mm	4mm
300mm	600mm	100mm	4mm
600mm	600mm	100mm	4mm

NOTES :
1. ALL DIMENSIONS ARE IN MM



SIDE VIEW OF DETAIL-B

SECTION A-A



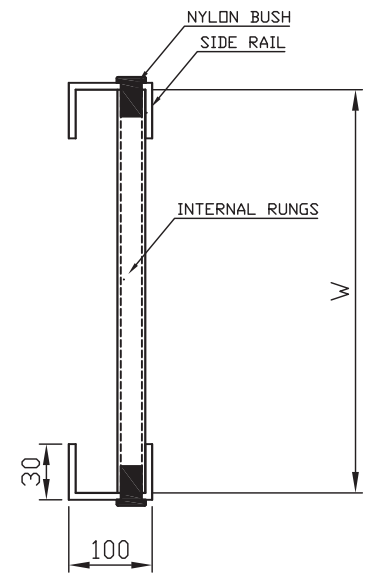
90° VERTICAL OUTSIDE BEND

W	RADIUS	H	THK
150mm	600mm	100mm	4mm
300mm	600mm	100mm	4mm
600mm	600mm	100mm	4mm

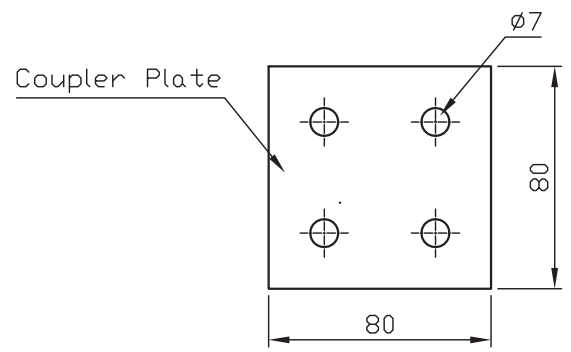
NOTES :

1. ALL DIMENSIONS ARE IN MM

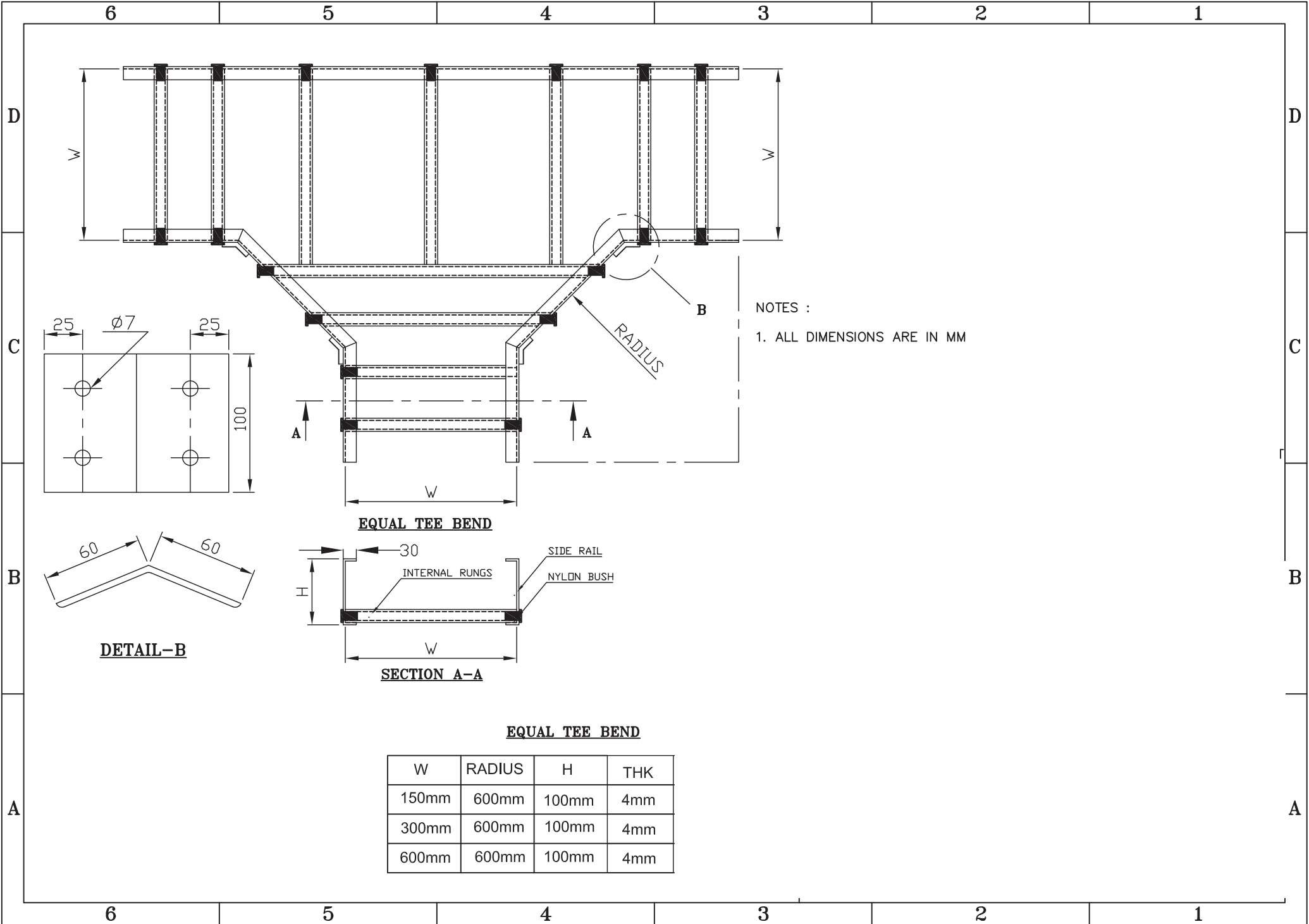
90° VERTICAL OUTSIDE BEND LADDER TYPE



SECTION A-A

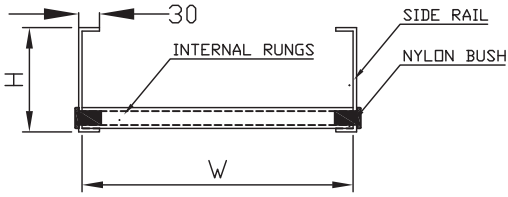


SIDE VIEW OF DETAIL-B



NOTES :
1. ALL DIMENSIONS ARE IN MM

EQUAL TEE BEND

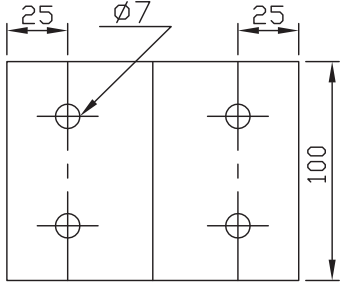
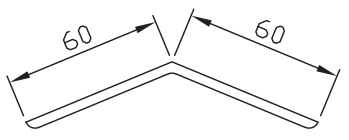


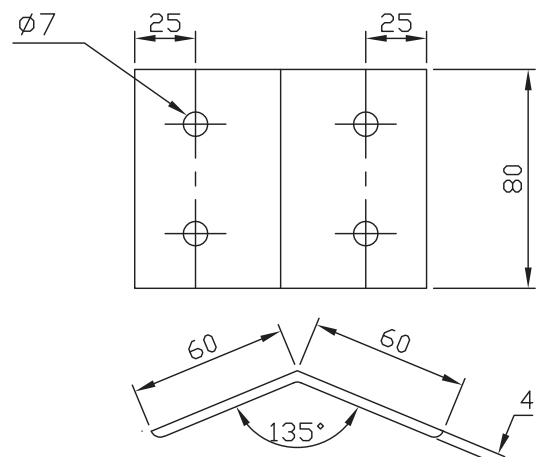
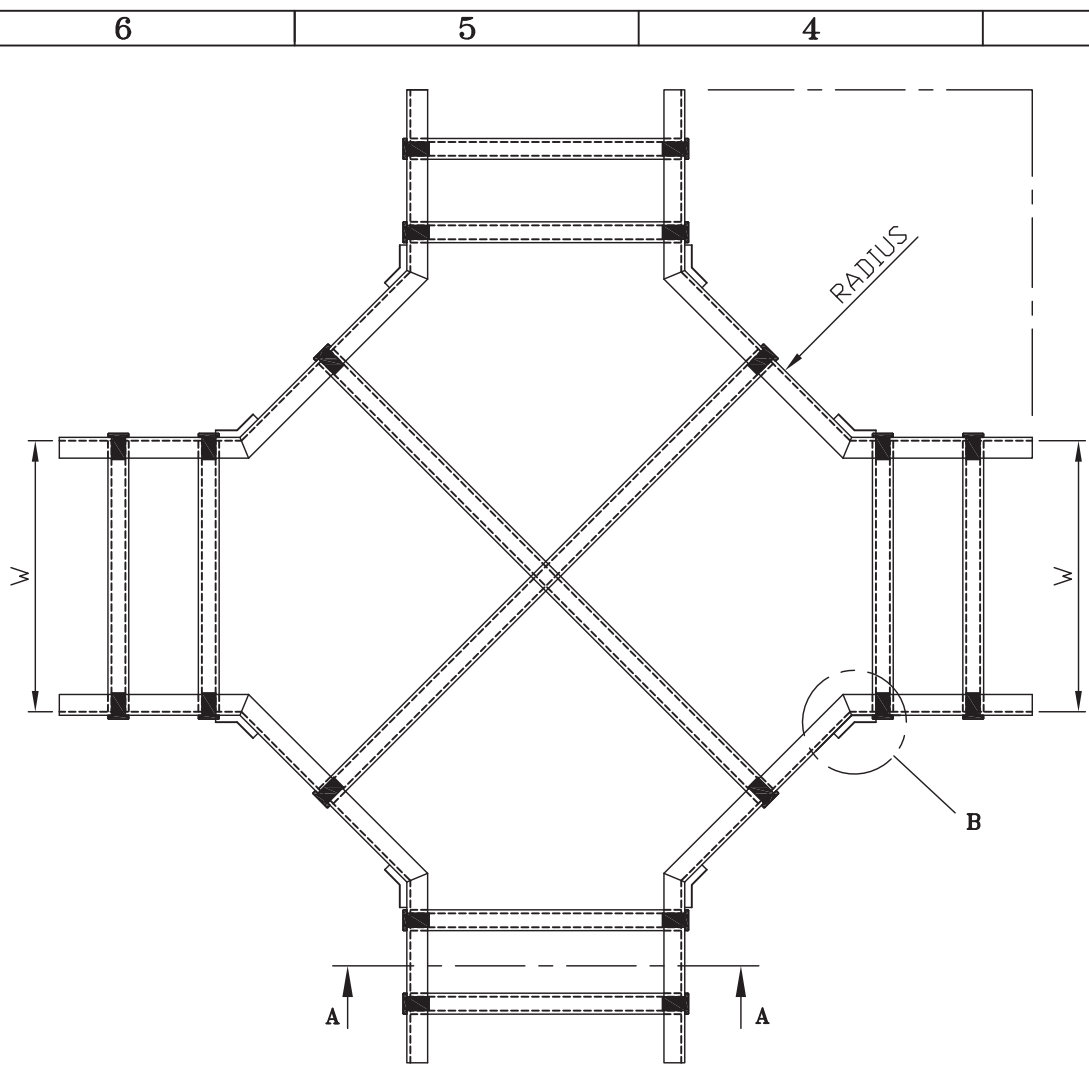
SECTION A-A

EQUAL TEE BEND

W	RADIUS	H	THK
150mm	600mm	100mm	4mm
300mm	600mm	100mm	4mm
600mm	600mm	100mm	4mm

DETAIL-B

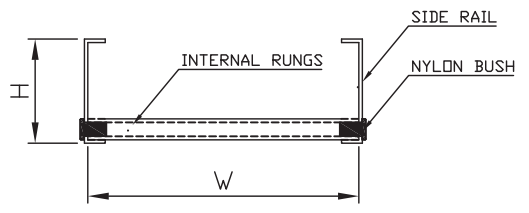




NOTES :
1. ALL DIMENSIONS ARE IN MM

DETAIL-B

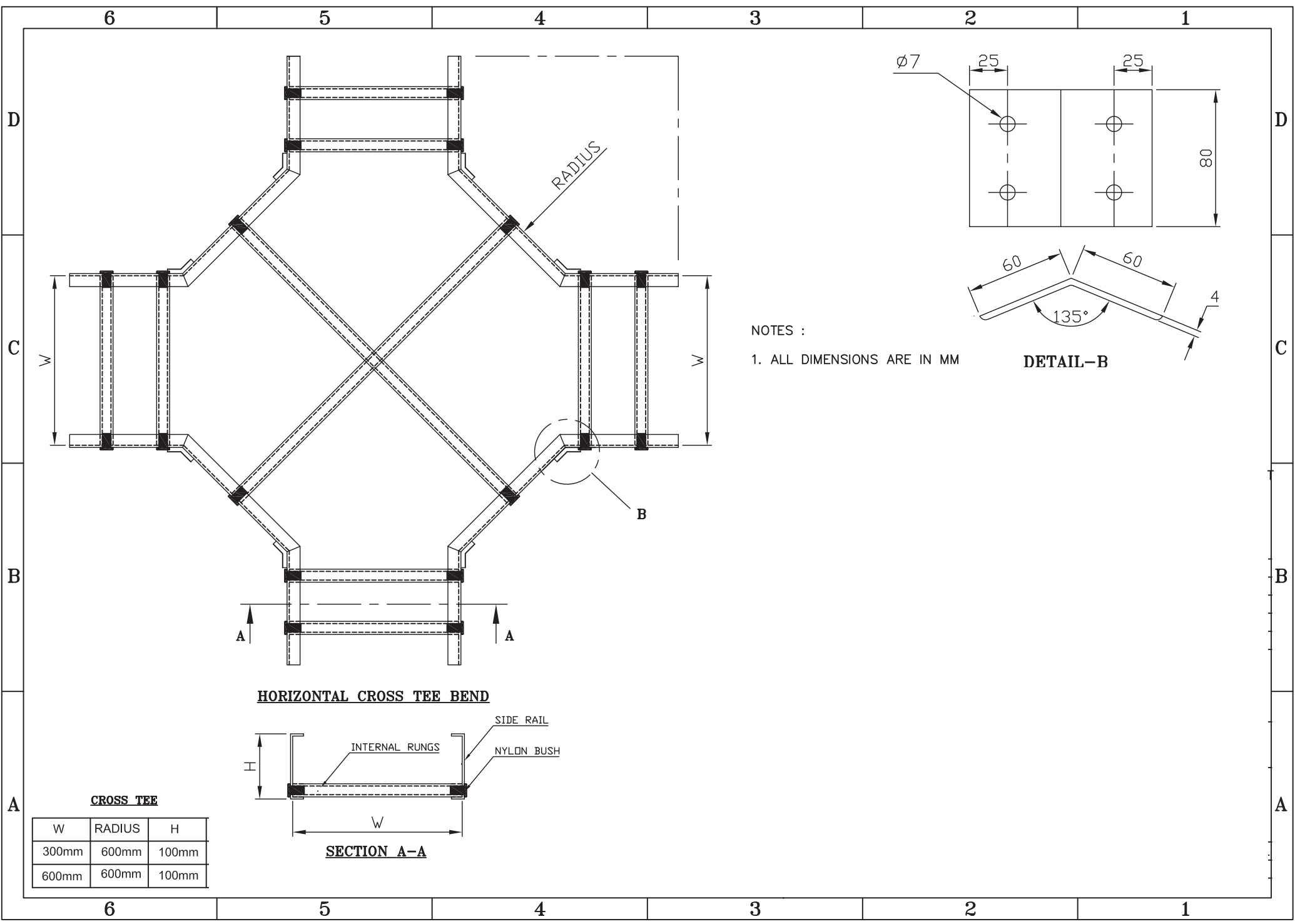
HORIZONTAL CROSS TEE BEND

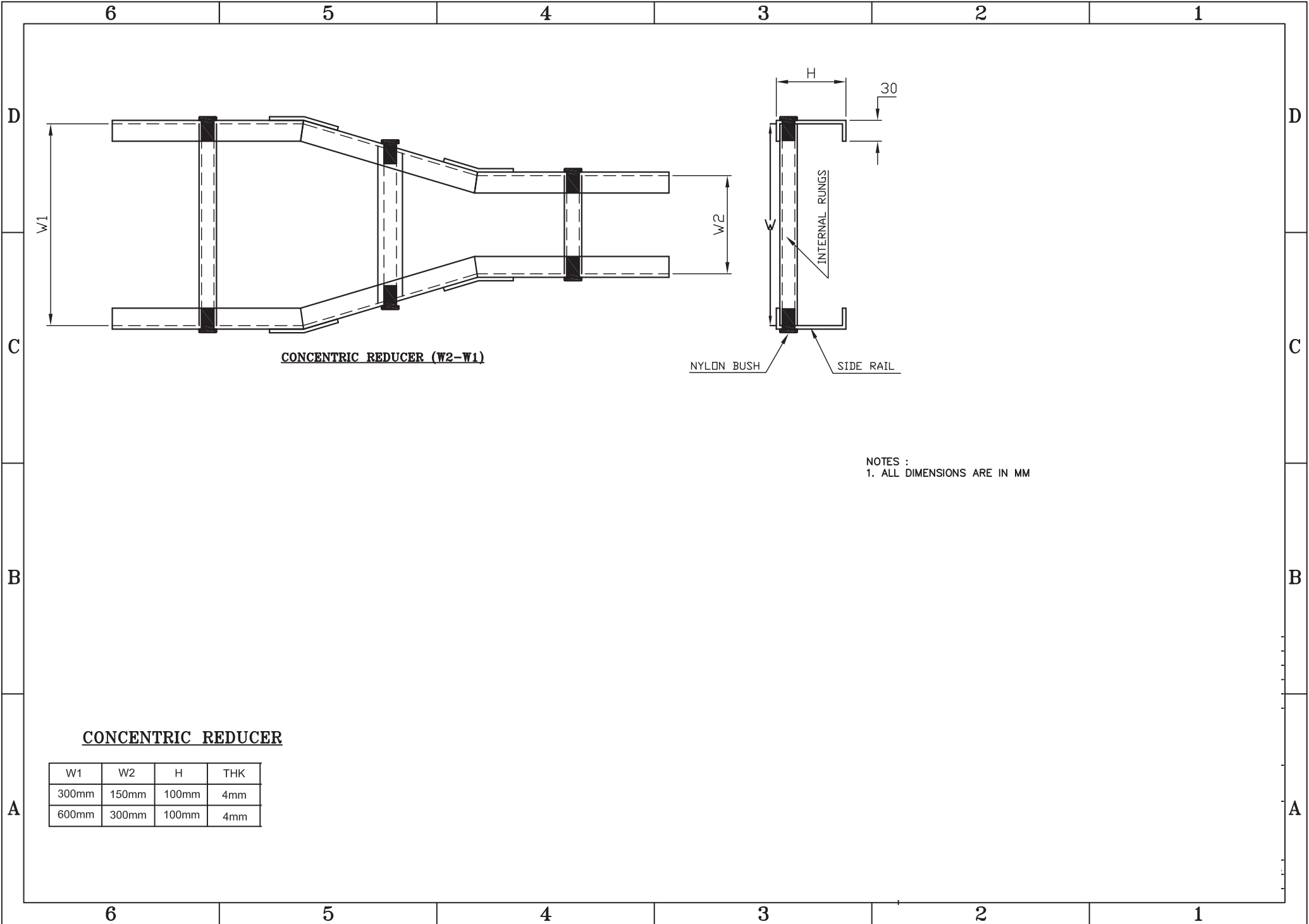


SECTION A-A

CROSS TEE

W	RADIUS	H
300mm	600mm	100mm
600mm	600mm	100mm





CONCENTRIC REDUCER (W2-W1)

NYLON BUSH SIDE RAIL

NOTES :
1. ALL DIMENSIONS ARE IN MM

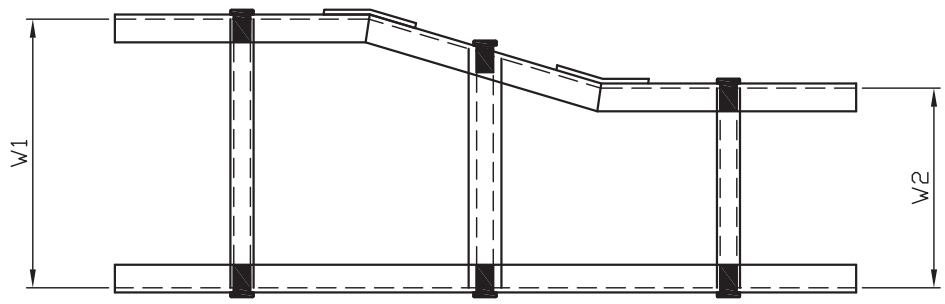
CONCENTRIC REDUCER

W1	W2	H	THK
300mm	150mm	100mm	4mm
600mm	300mm	100mm	4mm

6 5 4 3 2 1

D

D



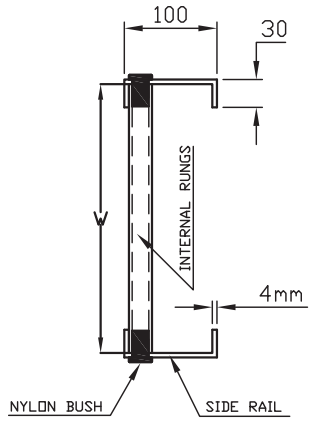
LEFT HAND REDUCER

W1	W2	H	THK
300mm	150mm	100mm	4mm
600mm	300mm	100mm	4mm

C

C

REDUCER (W2-W1)



B

B

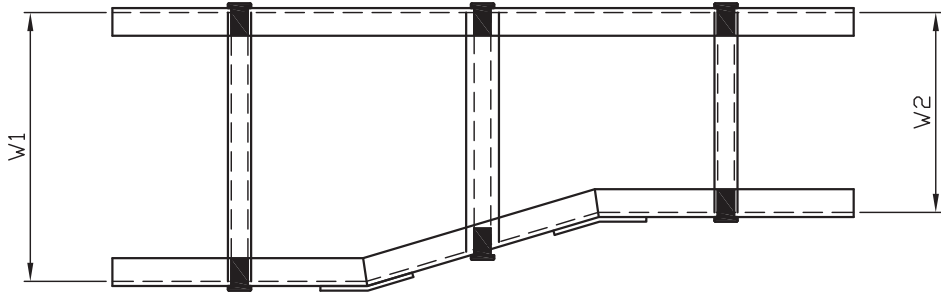
NOTES :

- 1. ALL DIMENSIONS ARE IN MM

A

A

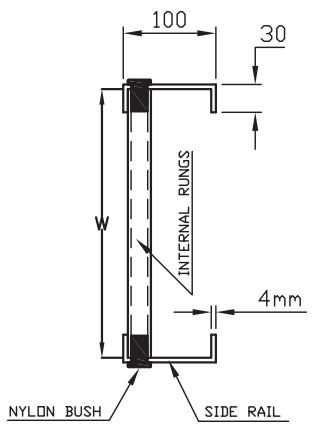
6 5 4 3 2 1



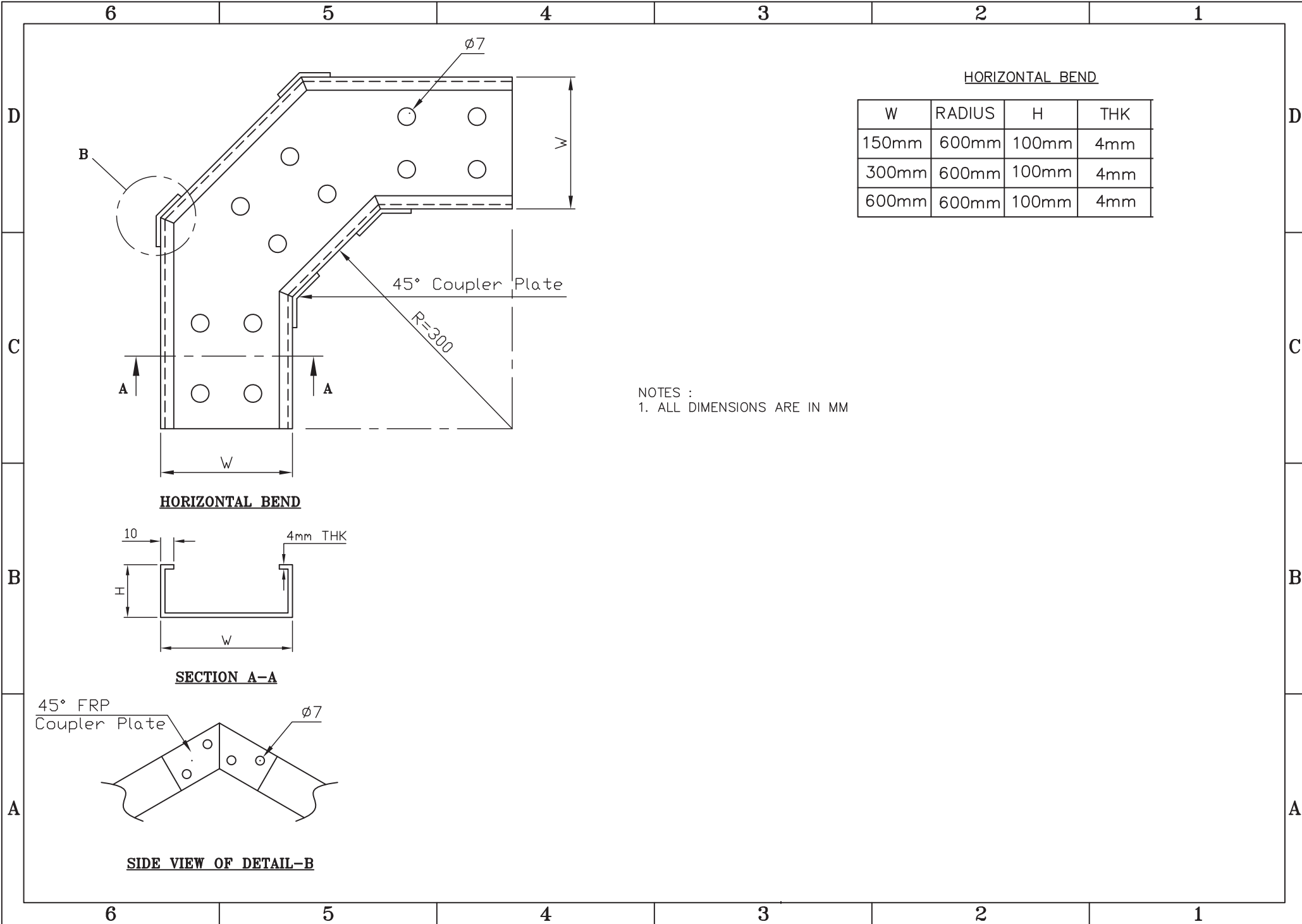
RIGHT HAND REDUCER

W1	W2	H	THK
300mm	150mm	100mm	4mm
600mm	300mm	100mm	4mm

REDUCER (W2-W1)



NOTES :
1. ALL DIMENSIONS ARE IN MM

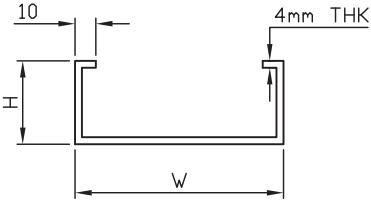


HORIZONTAL BEND

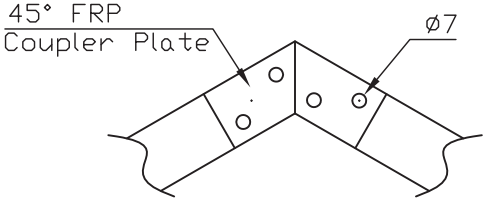
W	RADIUS	H	THK
150mm	600mm	100mm	4mm
300mm	600mm	100mm	4mm
600mm	600mm	100mm	4mm

NOTES :
1. ALL DIMENSIONS ARE IN MM

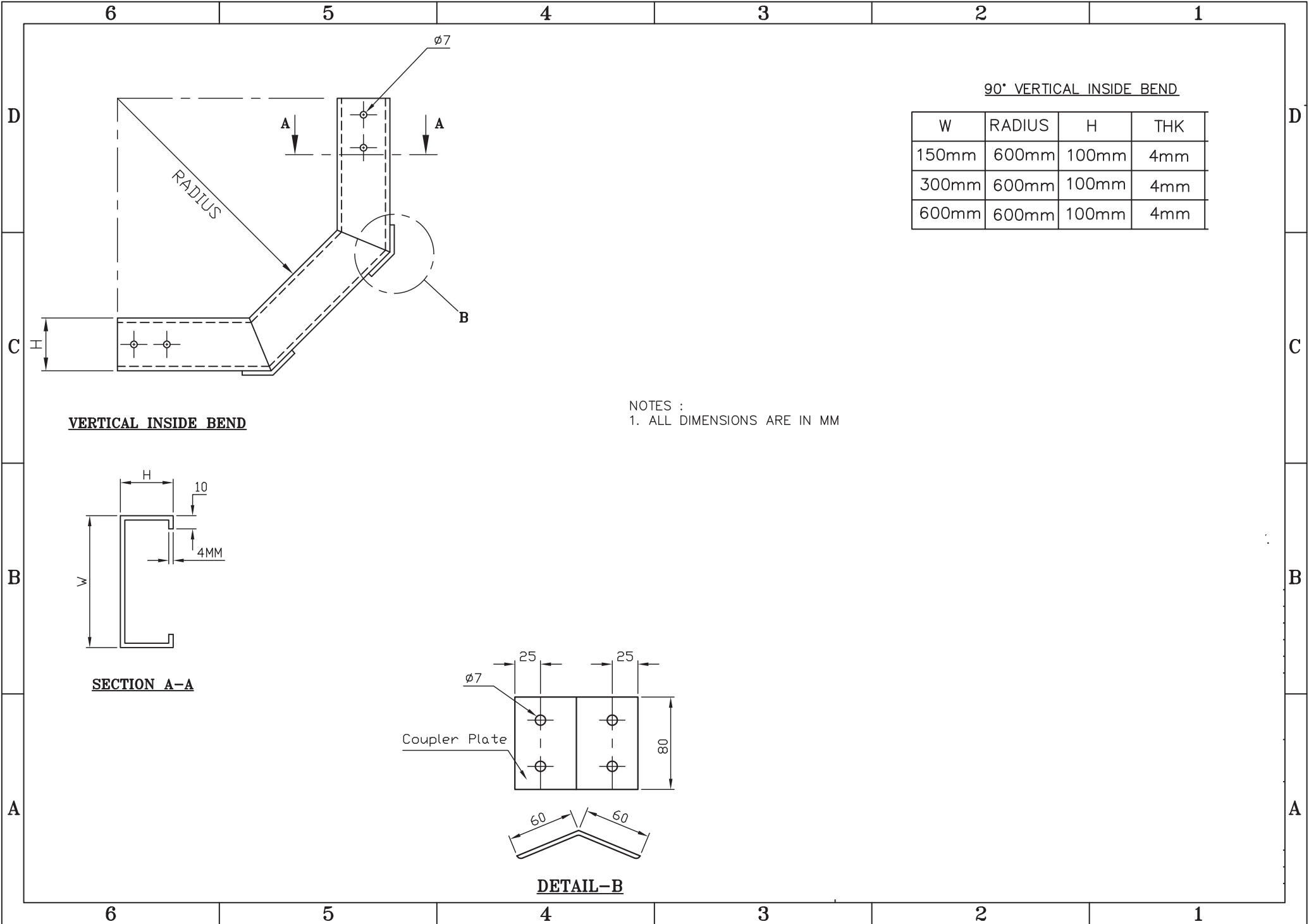
HORIZONTAL BEND



SECTION A-A



SIDE VIEW OF DETAIL-B



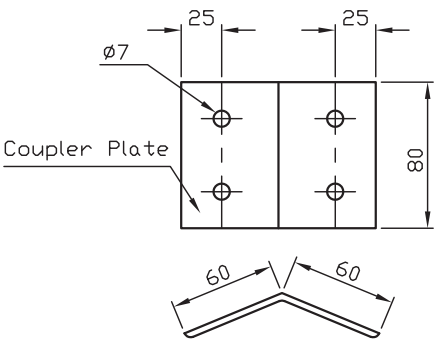
90° VERTICAL INSIDE BEND

W	RADIUS	H	THK
150mm	600mm	100mm	4mm
300mm	600mm	100mm	4mm
600mm	600mm	100mm	4mm

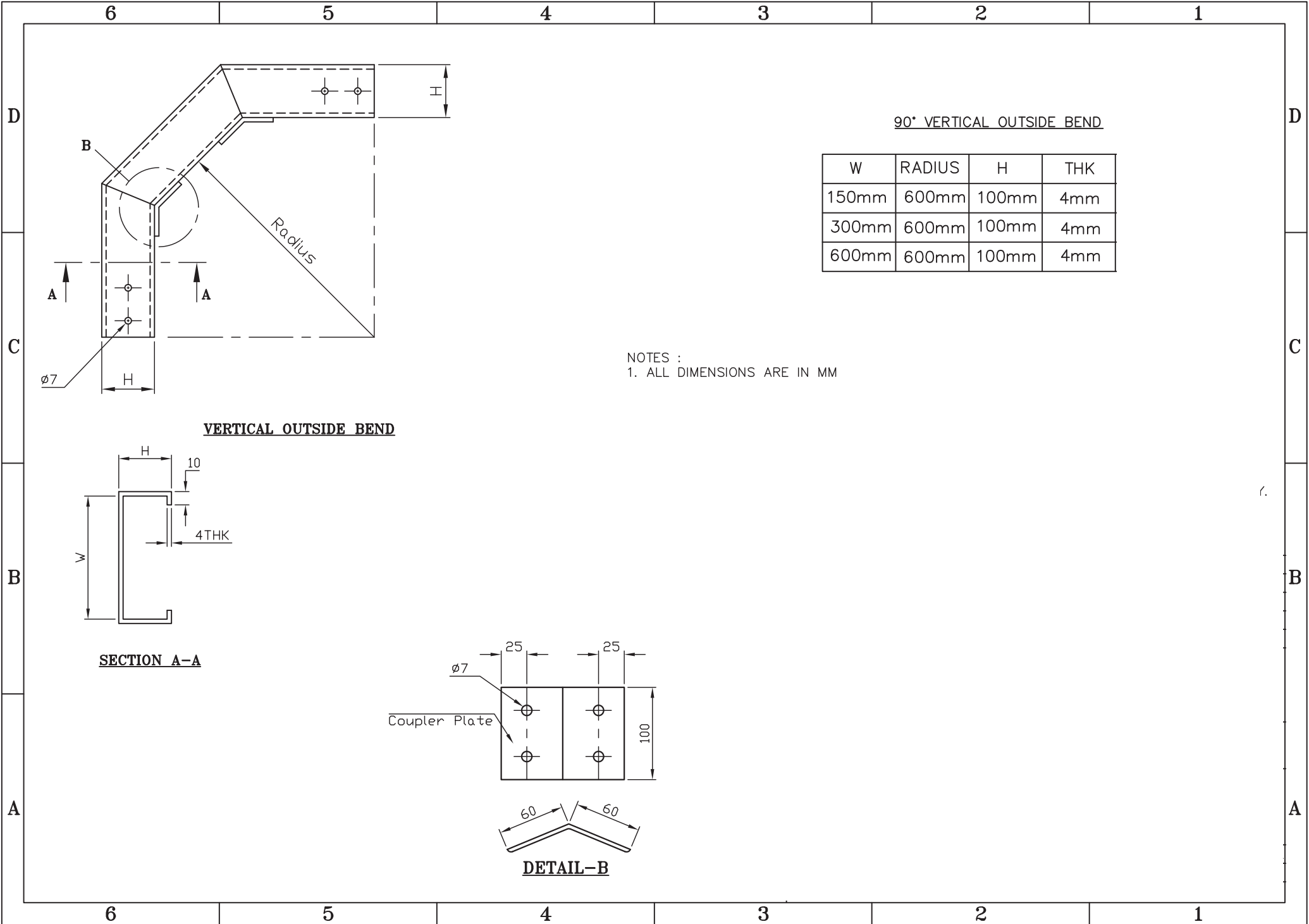
VERTICAL INSIDE BEND

NOTES :
1. ALL DIMENSIONS ARE IN MM

SECTION A-A



DETAIL-B



90° VERTICAL OUTSIDE BEND

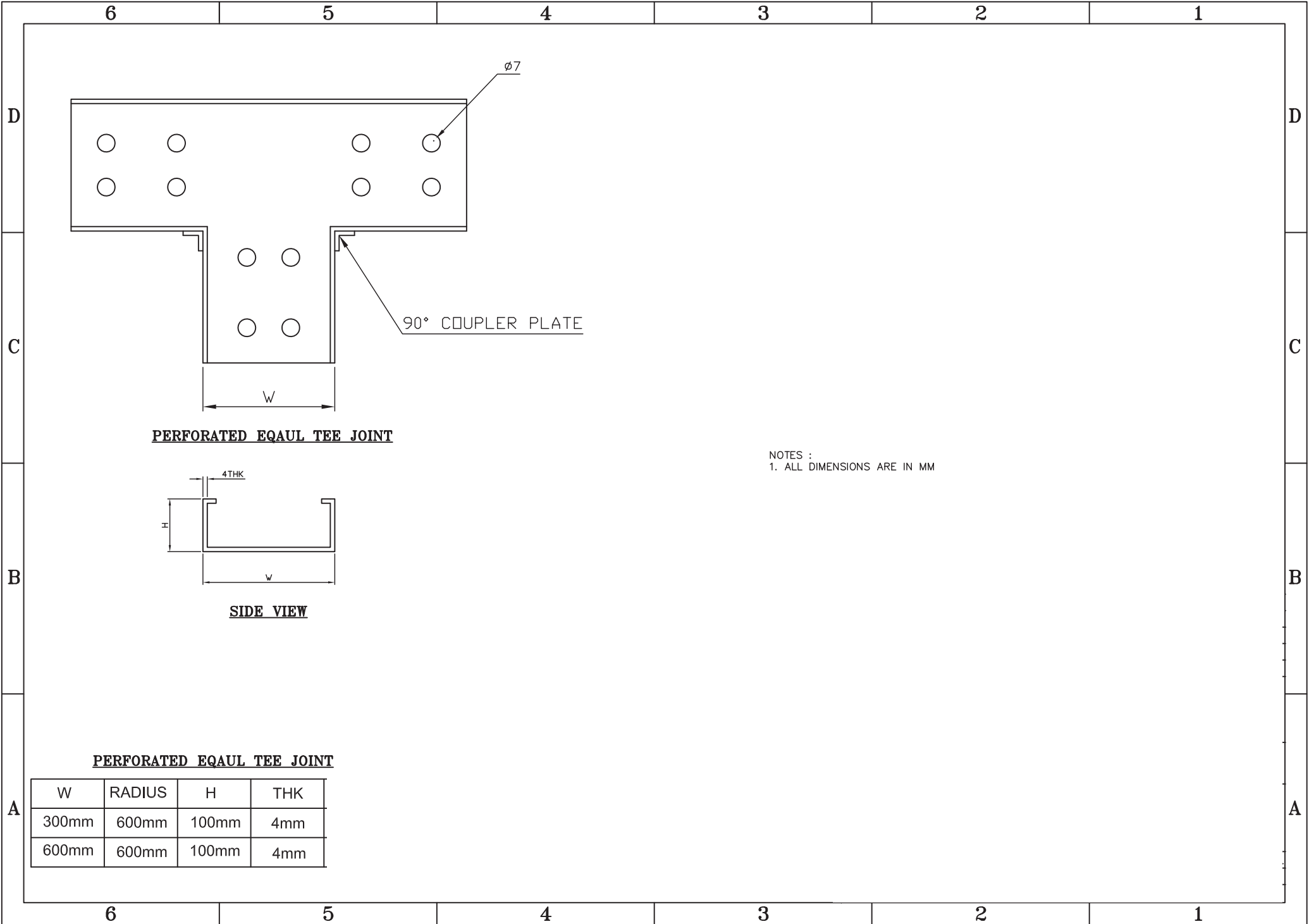
W	RADIUS	H	THK
150mm	600mm	100mm	4mm
300mm	600mm	100mm	4mm
600mm	600mm	100mm	4mm

NOTES :
1. ALL DIMENSIONS ARE IN MM

VERTICAL OUTSIDE BEND

SECTION A-A

DETAIL-B



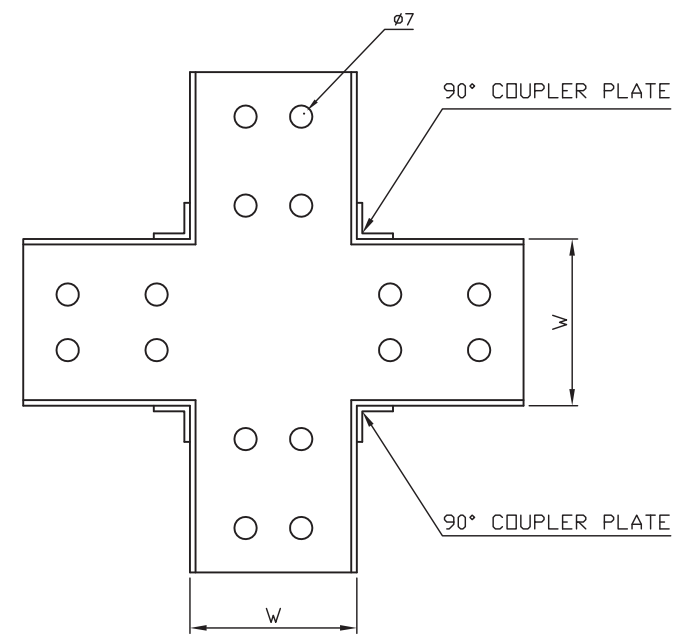
PERFORATED EQAUL TEE JOINT

NOTES :
1. ALL DIMENSIONS ARE IN MM

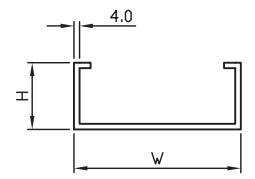
SIDE VIEW

PERFORATED EQAUL TEE JOINT

W	RADIUS	H	THK
300mm	600mm	100mm	4mm
600mm	600mm	100mm	4mm



PERFORATED CROSS TEE JOINT



SECTION A-A

NOTES :
1. ALL DIMENSIONS ARE IN MM

PERFORATED CROSS TEE JOINT

W	RADIUS	H	THK
300mm	600mm	100mm	4mm
600mm	600mm	100mm	4mm

6 5 4 3 2 1

D

D

C

C

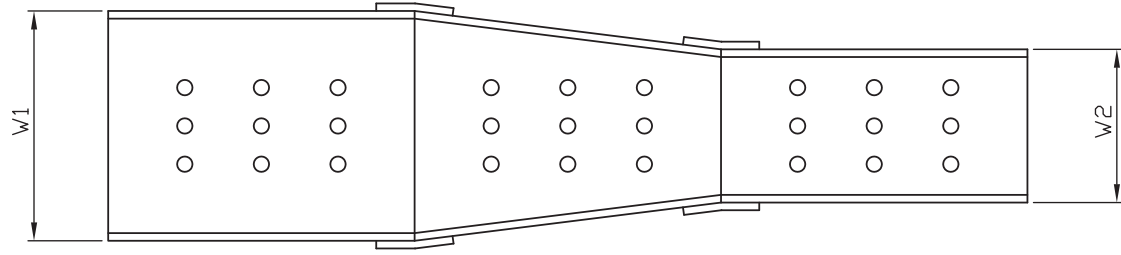
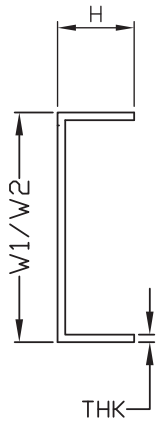
B

B

A

A

6 5 4 3 2 1

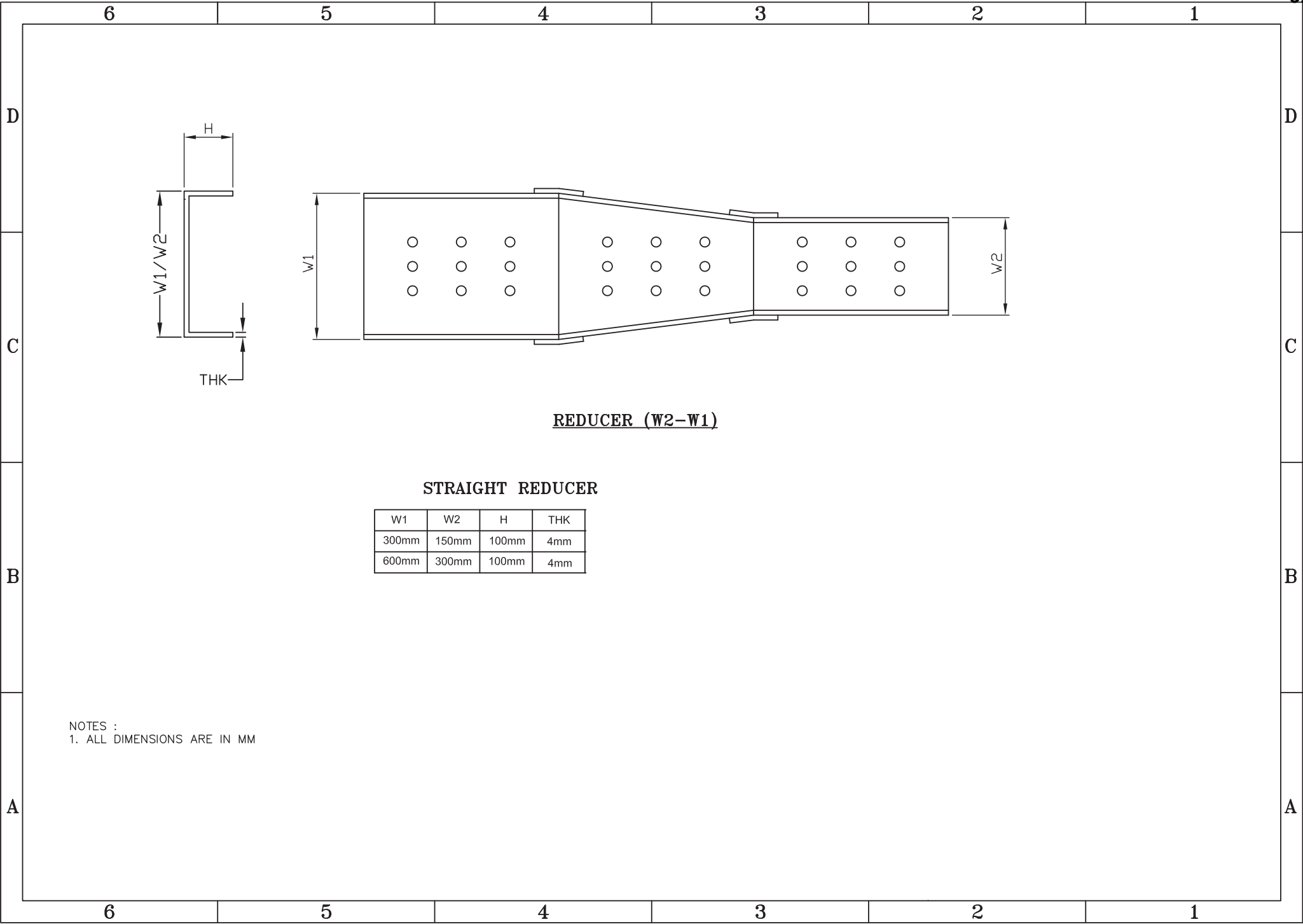


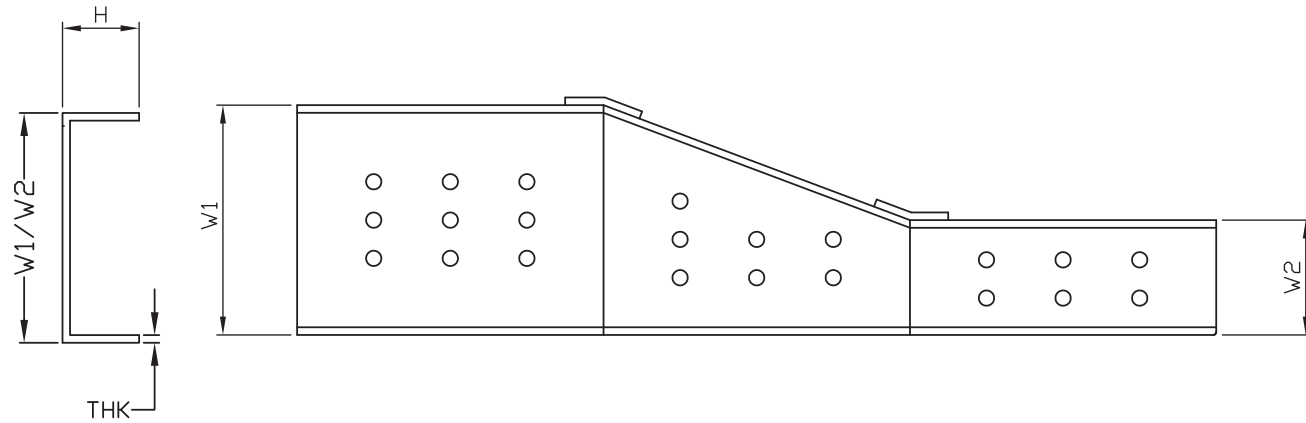
REDUCER (W2-W1)

STRAIGHT REDUCER

W1	W2	H	THK
300mm	150mm	100mm	4mm
600mm	300mm	100mm	4mm

NOTES :
1. ALL DIMENSIONS ARE IN MM



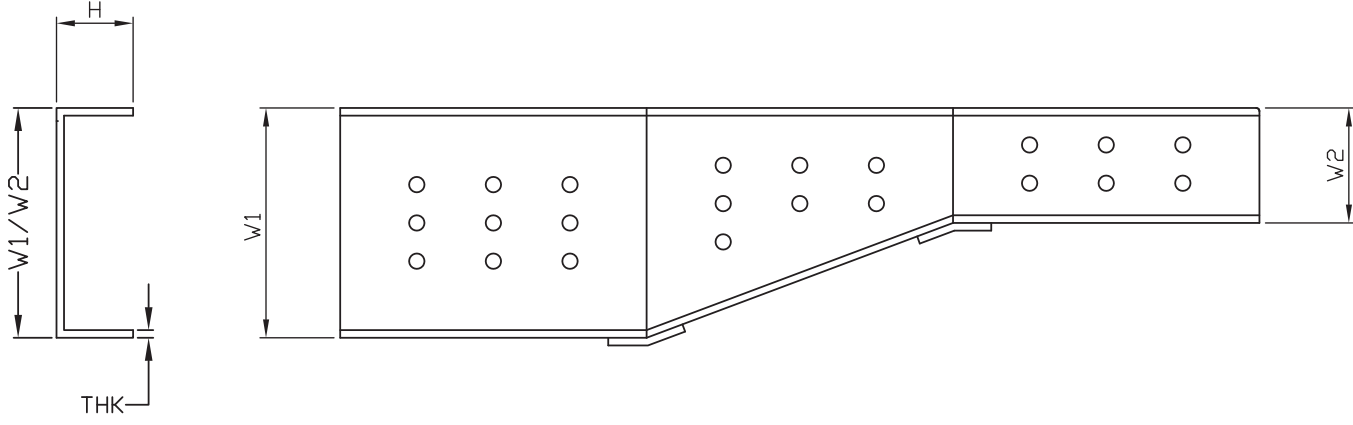


LEFT HAND REDUCER (W2-W1)

LEFT HAND REDUCER

W1	W2	H	THK
300mm	150mm	100mm	4mm
600mm	300mm	100mm	4mm

NOTES :
1. ALL DIMENSIONS ARE IN MM

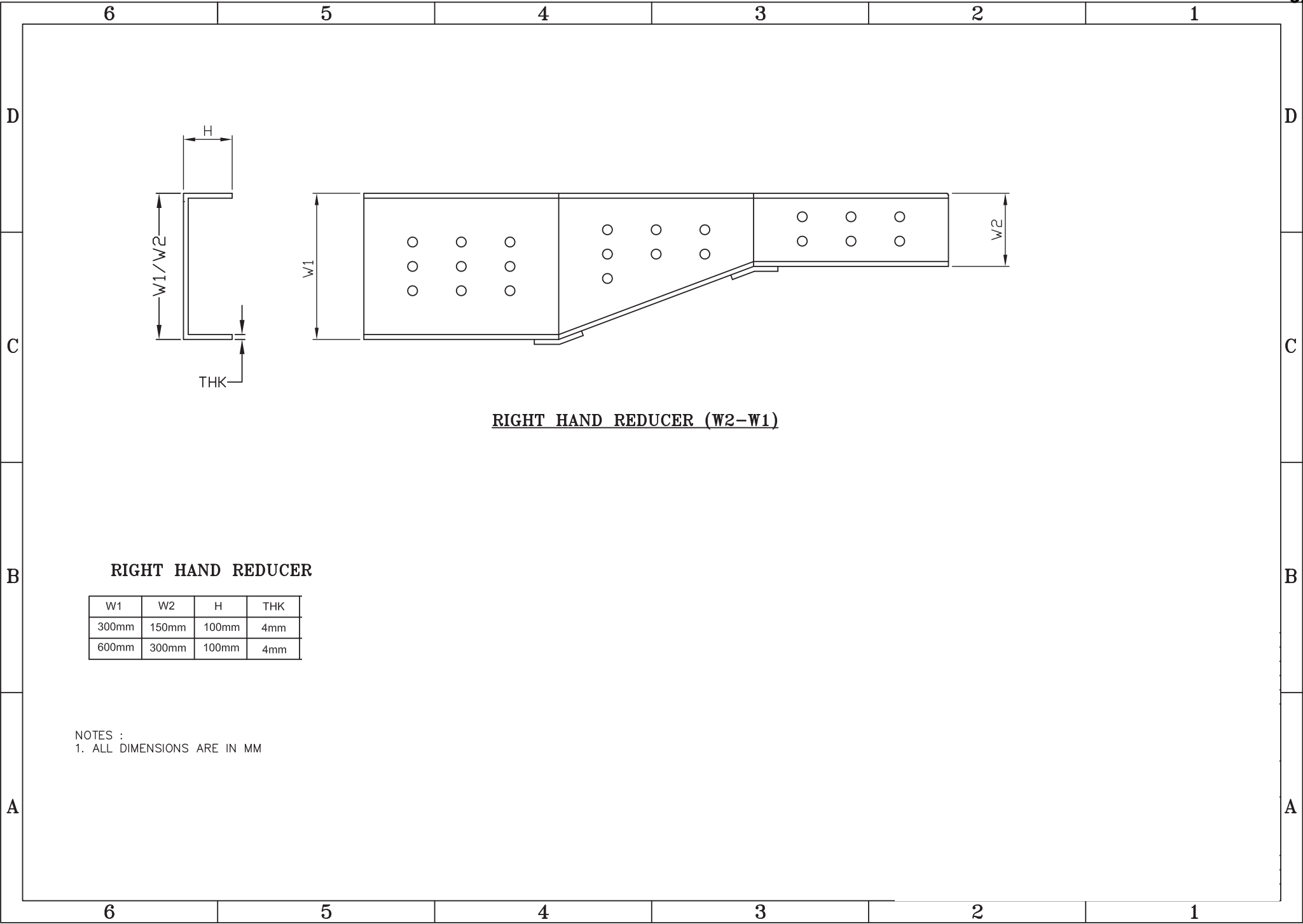


RIGHT HAND REDUCER (W2-W1)

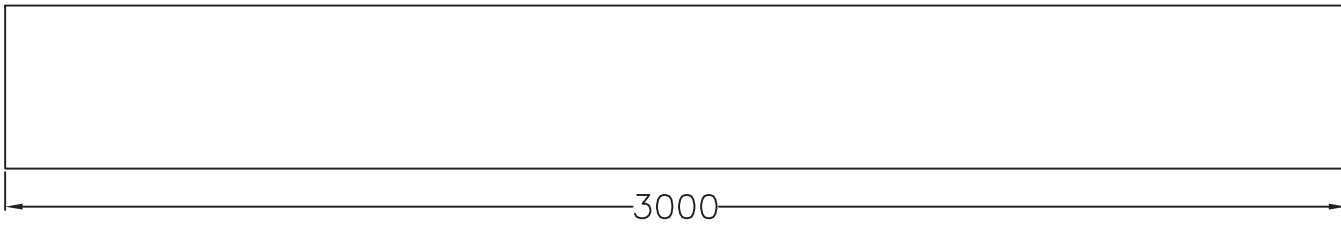
RIGHT HAND REDUCER

W1	W2	H	THK
300mm	150mm	100mm	4mm
600mm	300mm	100mm	4mm

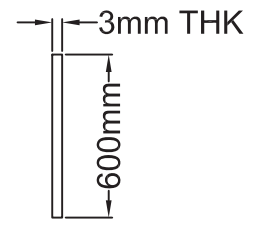
NOTES :
1. ALL DIMENSIONS ARE IN MM



6 5 4 3 2 1



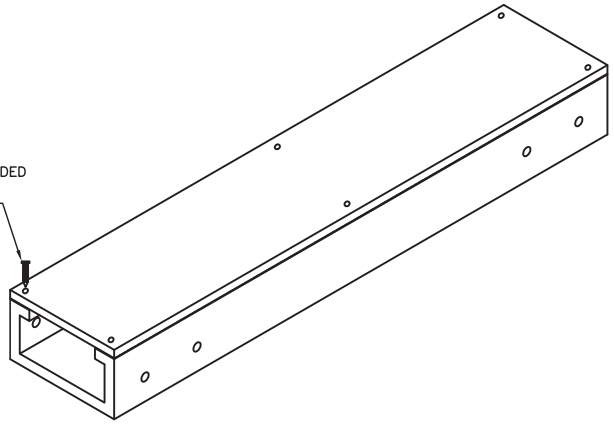
PLAN



SIDE VIEW

FRP PERFORATED
CABLE TRAY COVER

SELF THREADED
SCREW



- NOTES :
- 1. STANDARD LENGTH 3MTR.
 - 2. ALL DIMENSIONS ARE IN MM

6 5 4 3 2 1

D

D

C

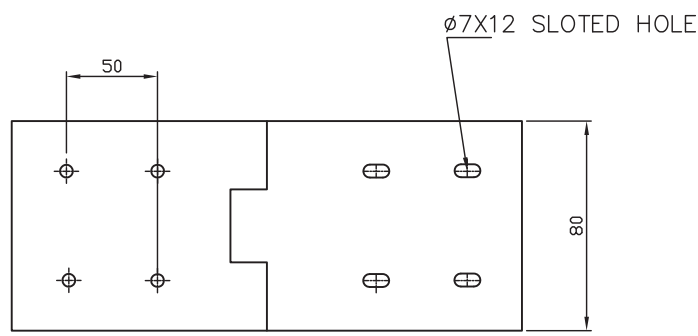
C

B

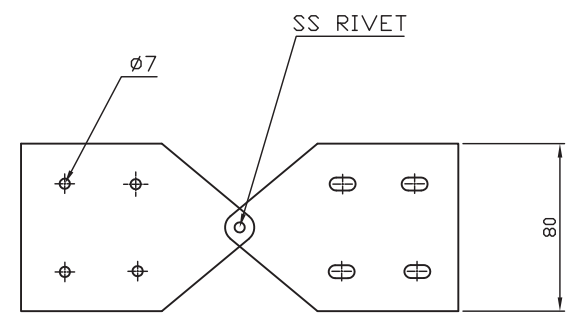
B

A

A



FRP HORIZONTAL HINGE SPLICE PLATE
FOR 100mm, HEIGHT CABLE TRAY



FRP VERTICAL HINGE SPLICE PLATE
FOR 100mm, HEIGHT CABLE TRAY

