

(Bill of Quantity) BOQ (Annexure-I)

MISC. REPAIR AND FACE UPLIFT WORK AT BHEL LUCKNOW - PICUP BHAWAN (B-2 BLOCK 1st FLOOR)

S.N.	DESCRIPTION OF ITEM	UNIT	Est Quantity	% Weightage of Item Amount against Total Amount
A				
1	Dismantling old plaster or skirting raking out joints and cleaning the surface for plaster including disposal of rubbish to the dumping ground within 50 metres lead.	CUM	1169	4.69
2	Dismantling W.C. Pan of all sizes including disposal of dismantled materials i/c malba all complete as per directions of Engineer-in- Charge.	NO.	2	0.02
3	Dismantling doors, windows and clerestory windows (steel or wood) shutter including chowkhats, architrave, holdfasts etc. complete and stacking within 50 metres lead :	NO.	2	0.07
4	12 mm cement plaster in single coat on fair side of single or half brick wall for interior plastering up to floor two level including internal rounded angles not exceeding 80mm in girth and finished even and smooth. (1)1 cement:4 F sand	SQM	150	3.82
5	Providing and fixing factory made single extruded WPC (Wood Polymer Composite) solid decorative type flush door shutter of required size comprising of virgin polymer of K value 58-60 (Suspension Grade), calcium carbonate and natural fibers (wood powder/ rice husk/wheat husk) and non toxic additives (maximum toxicity index of 12 for 100 gms) having minimum density of 650 kg/ cum and screw withdrawal strength of 1800 N (Face) & 900 N (Edge), minimum compressive strength 50 N/mm2, modulus of elasticity 850 N/mm2 and resistance to spread of flame of Class A category with property of being termite/borer proof, water/moisture proof	(1.6 X 2.10 sq mtr) Door	2 Nos.	2.20
6	Providing and fixing factory made uPVC white colour casement/casement cum fixed glazed windows comprising of uPVC multi-chambered frame, sash and mullion (where ever required) extruded profiles duly reinforced with 1.60 ± 0.2 mm thick galvanized mild steel section made from roll forming process of required length (shape & size according to uPVC profile), uPVC extruded glazing beads of appropriate dimension, EPDM gasket, stainless steel (SS 304 grade) friction hinges, zinc alloy (white powder coated) casement handles, G.I fasteners 100 x 8 mm size for fixing frame to finished wall, plastic packers, plastic caps and necessary stainless steel screws etc. Profile of frame & sash shall be mitred cut and fusion welded at all corners, mullion (if required) shall be also fusion welded including drilling of holes for fixing hardware's and drainage of water etc. After fixing frame the gap between frame and adjacent finished wall shall be filled with weather proof silicon sealant over backer rod of required size and of approved quality, all complete as per approved drawing & direction of Engineer-in-Charge. (Single / double glass panes and silicon sealant shall be paid separately) Casement window single panel with S.S. friction hinges (300 x 19 x 1.9 mm), made of (small series) frame 47 x 50 mm & sash 47 x 68 mm both having wall thickness of 1.9 ± 0.2 mm and single glass pane glazing bead of appropriate dimension. (Area of window upto 0.75 sqm.)	Size as per Pg 3 of Annexure I	9 Nos.	4.85
7	Providing and laying Gypsum panel partitions 100 mm thick with water proof Gypsum panels of size 666x500x100mm, made of calcite phosphor Gypsum fixed with tongue and groove, jointed with bonding plaster as per manufacturer's specifications in superstructure above plinth level up to floor V level. Gypsum blocks will have a minimum compressive strength of 9.3 kg/cm2	SQM	110	8.27
8	Providing and fixing 1st quality ceramic glazed wall /floor tiles conforming to IS: 15622 (thickness to be specified by the manufacturer), of approved make, in all colours, shades except burgundy, bottle green, black of any size as approved by Engineer-in-Charge, in skirting, floor. risers of steps and dados, over 12 mm thick bed of cement mortar 1:3 (1 cement : 3 coarse sand) and jointing with grey cement slurry @ 3.3kg per sqm, including pointing in white cement mixed with pigment of matching shade complete.	SQM	182	16.95
9	Providing and applying white cement based putty of average thickness 1 mm, of approved brand and manufacturer, over the plastered wall surface to prepare the surface even and smooth complete.	SQM	175	2.01
10	Scrapping Old Surface, Primere and Distemping with 1st quality acrylic distemper (ready mixed) having VOC content less than 50 gms/litre, of approved manufacturer, of required shade and colour complete, as per manufacturer's specification. Two or more coats on new work	SQM	1860	25.37
B	Electrification Work (As per Annexure - II)	Contractor to visit premises for quoting)	Lumpsum	20.77
C	Plumbing Work (As per Annexure - II)	Contractor to visit premises for quoting)	Lumpsum	10.98

100.00

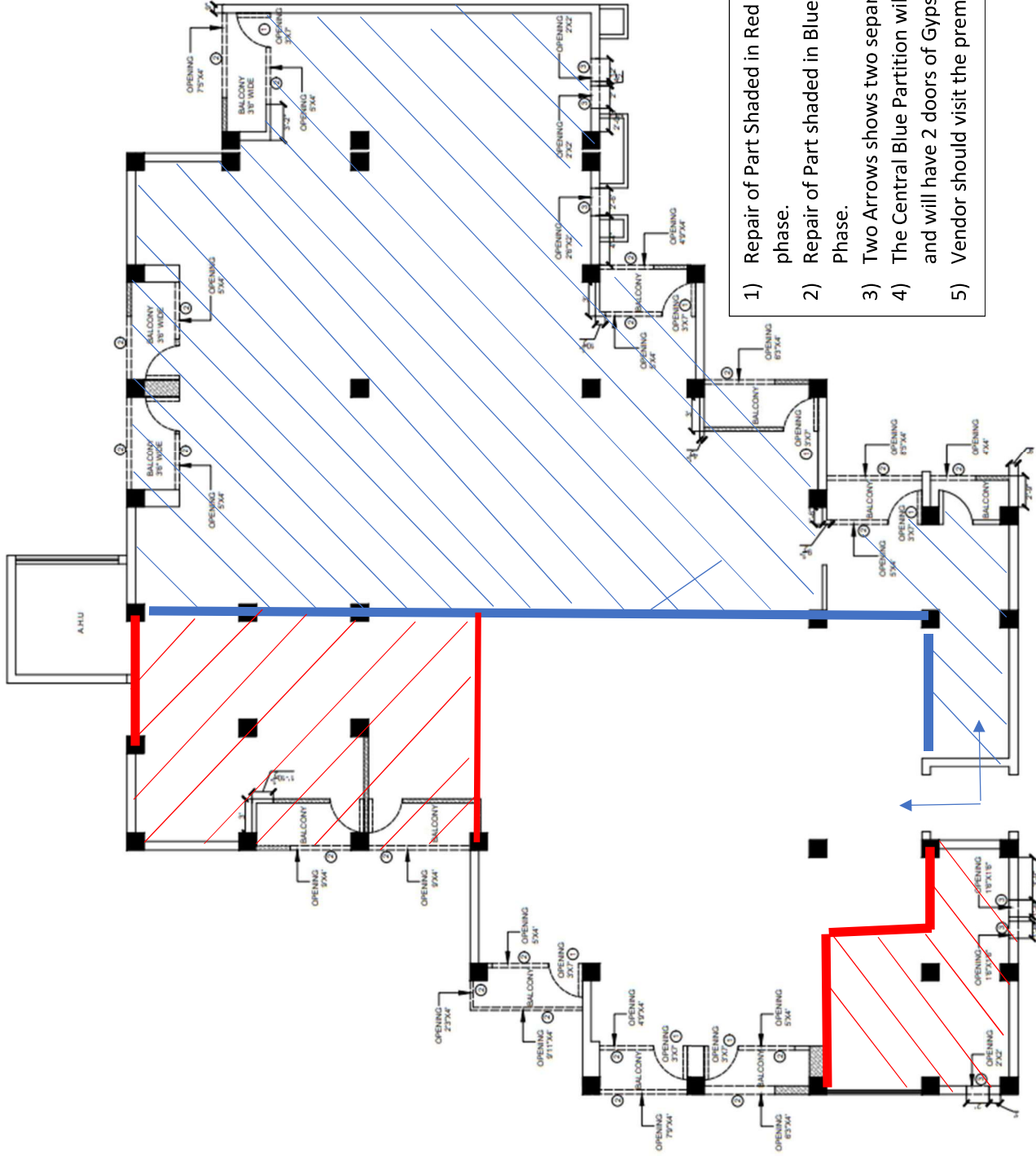
PLUMBING			
S.N.	Description	Qty.	Unit
SANITARY FIXTURES & ACCESSORIES : I			
1	Toilet Seat & Water Closet Providing and fixing white vitreous china extended wall mounting water closet of size 780x370x690 mm of approved shape including providing & fixing white vitreous china cistern with dual flush fitting, of flushing capacity 3 litre/ 6 litre (adjustable to 4 litre/ 8 litres), including seat cover, and cistern fittings, nuts, bolts and gasket etc complete.	8	NO.
2	Providing & fixing white vitreous china wash basin with C.I. brackets painted white, 15mm C.P. brass pillar taps, C.P. brass chain with rubber plug, 32mm C.P. brass waste of standard pattern including cutting & making good the walls wherever required. White Vitreous China Surgeon type wash basin of size 660x460 mm with a pair of 15 mm C.P. brass pillar taps with elbow including operated levers	8	Nos.
3	Providing and fixing flexible P.V.C. waste pipe for sink or wash basin including PVC waste fittings complete.		
	a) 32mm dia	8	Nos.
	b) 40mm dia	5	Nos.
4	Providing & fixing 600x450mm bevelled edge mirror of superior glass (of approved quality) complete with 6mm thick asbestos cement sheet ground fixed to wooden cleats with C.P. brass screws and washers.	6	No.
5	Providing and fixing stainless steel A ISI 304(18/8) kitchen sink as per IS 13983 with C.I. brackets, stainless steel plug 40mm including painting the fitting and brackets, cutting and making good the walls wherever required.		
	Kitchen sink with drain board of size 510x1040x200mm	2	No.
6	Providing and fixing white vitreous china battery based infrared sensor operated urinal of approx. size 610 x 390 x 370 mm having pre & post flushing with water (250 ml & 500 ml consumption), having water inlet from back side, including fixing to wall with suitable brackets all as per manufacturers specification and direction of Engineer-in-charge	4	Each
7	Providing & fixing PTMT towel rail complete with brackets fixed to wooden cleats with cp brass screws with concealed fitting arrangement of approved quality and colour. 600 mm. long towel rail length of 645 mm. width 78 mm. and effective height of 88 mm, weighing not less than 190 gms.	7	Each
8	Providing and fixing PTMT Liquid soap container 109 mm wide, 125 mm high and 112 mm distance from wall of standard shape with bracket of the same material with snap fittings of approved quality and colour weighing not less than 105 gms	7	Each
9	Providing and fixing C.P. brass Two-way angle valve for EWC points & for fixing Ablution Health Faucet of approved quality conforming to IS:8931. 15 mm nominal bore	7	Each
10	P/F Chlorinated Polyvinyl Chloride (CPVC) pipes having thermal stability for hot and cold water supply including all CPVC plain and brass threaded fittings. . This includes jointing of pipes and fitting with one step CPVC solvent cement and the cost of cutting chases and making good the same including testing of joints complete as per direction of Eng. I/C. CONCEALED work including cutting, chases and making good the wall etc.		
	a) 20mm dia nominal bore	20	Rm.
	b) 25mm dia nominal bore	15	Rm.

INTERNAL ELECTRIFICATION WORK.

Sr.No.	Particulars	Qty	Unit
1	Wiring point for light with 1.5 sq. mm.FRLSH PVC insulated multistrand single core copper conductor cable in PVC conduit with 1.5 sq. mm.FRLSH PVC insulated multistrand copper conductor cable as earthwire drawn inside the conduit,GP Box , piano type switch & ceiling rose/angle/batten holder on 3mm thick phenolic paminated backalite sheet etc complete in all respect as directed including matching colour wash.	30	Nos.
2	Wiring point for two ways light with 1.5 sq. mm. F.R. PVC insulated multistrand single core copper conductor cable in PVC conduit with 1.5 sq. mm.FRLSH PVC insulated multistrand copper conductor cable as earthwire drawn inside the conduit, GP Box and two number two way piano type switches & ceiling rose / angle / batten holder on 3 mm thick phenolic laminated backelite sheet etc., complete in all respect, as directed, including matching colour wash.	6	Nos.
3	Wiring point for fan / fresh air fan (light duty exhaust fan) with 1.5 sq.mm.FRLSH PVC insulated multistrand single core copper conductor cable in PVC conduit with 1.5 sq. mm.FRLSH PVC insulated multistrand copper conductor cable as earthwire drawn inside the conduit,GP Box , piano type switch & ceiling rose on 3 mm. thick backelite sheet etc., complete in all respect including matching colour wash.	6	Nos.
4	Wiring point for plug with 1.5 sq. mm.FRLSH PVC insulated multistrand single core copper conductor cable in PVC conduit with 1.5 sq. mm.FRLSH PVC insulated multistrand copper conductor cable as earthwire drawn inside the conduit and piano type switch and socket etc., complete in all respect including matching colour wash.	25	Nos.
5	Wiring point for exhaust fan with 1.5 sq. mm.FRLSH PVC insulated multistrand single core copper conductor cable in PVC conduit with 1.5 sq. mm.FRLSH PVC insulated multistrand copper conductor cable as earthwire drawn inside the conduit,GP Box , 15A piano type switch & ceiling rose on 3 mm thick	10	Nos.
6	plug point with 5 Amp flush type switch and 3 pin socket and earth continuity wire of 1.5 sq.mm. FRLSH PVC insulated multi strand copper conductor cable in PVC conduit.	45	Nos.
7	Add for light / fan points with modular type switch in place of piano type switch.	20	Nos.
8	Add for 2 way light point with modular switches in place of piano type switches.	6	Nos.
9	Add for plug point with modular switch & socket in place of piano type switch & socket.	25	Nos.
10	Add for HPMV/Exhaust fan point with modular type switch in place of piano type switch.	10	Nos.
11	Supplying and fixing following modular switch/ socket on the existing modular plate & switch box including connections but excluding modular plate etc. as required..		
a	15/16 A switch	50	Nos.
12	Wiring for circuit/ submain wiring alongwith earth wire with the following sizes of FRLS PVC insulated copper conductor, single core cable in surface/ recessed steel conduit as required. 2 X 1.5 sq. mm + 1 X 1.5 sq. mm earth wire	40	Meter

13	Supplying and drawing following pair 0.5 mm dia FRLS PVC insulated annealed copper conductor, unarmored telephone cable in the existing surface/ recessed steel/ PVC conduit as required. 2 Pair	40	Meter
14	Supplying and drawing co-axial TV cable RG-6 grade, 0.7 mm solid copper conductor PE insulated, shielded with fine tinned copper braid and protected with PVC sheath in the existing surface/ recessed steel/ PVC conduit as required.	40	Meter
15	Supply and wiring of submain with two number 2.5 sq.mm. FRLSH PVC insulated 1100 V grade multistrand single core copper conductor cable in 20 mm dia heavy duty (2mm thick) PVC conduit with 1 nos. 1.5 sq. mm. FRLSH PVC insulated 1100 V grade multistrand single core copper conductor cable as earth continuity wire drawn inside the conduit complete in all respect.	80	Meter
16	Supply and wiring of submain with two number 4 sq.mm. FRLSH PVC insulated 1100 V grade multistrand single core copper conductor cable in 20 mm dia heavy duty (2 mm thick) PVC conduit with one no. 2.5 sq. mm. FRLSH PVC insulated multistrand copper conductor cable as earth continuity wire drawn in conduit.	80	Meter
17	Supply and wiring of submain with two number 6 sq. mm. FRLSH PVC insulated 1100 V grade multistrand single core aluminium conductor cable in 25 mm dia heavy duty (2 mm thick) PVC conduit with one number 4 sq. mm. FRLSH PVC insulated multistrand copper conductor cable as earth continuity wire drawn in conduit.	75	Meter
18	Supply and wiring of 4 number 10 sq. mm. FRLSH PVC insulated 1100 V grade multistrand single core copper conductor cable in heavy duty (2 mm thick) PVC conduit with 2 nos 6 sq.mm. FRLSH PVC insulated copper conductor cable as earth continuity wire drawn in conduit.	75	Meter
19	Supply and wiring of 4 number 16 sq. mm. PVC insulated 1100 V grade single core Copper conductor cable in 40 mm dia PVC conduit partly concealed in wall and partly laid in slab alongwith reinforcement before concreting, with two number 10 sq mm single core Copper conductor cable as earth continuity wiredrawn in conduit including matching colour wash etc, complete in all respect.	70	Meter
20	Supply and fixing of recess/Surface/Pendent mounting round 6 Watt 8 Watt LED Down Lighter having Powder coated die cast aluminium housing with heat sink, diffuser/ Reflector and driver set complete in all respect. CAT- AAA	22	Nos.
21	Supply and fixing of recess/ Surface/ Pendent mounting round 15 Watt LED Down Lighter having Powder coated die cast aluminium housing with heat sink, diffuser/ Reflector and driver set complete in all respect. CAT- AAA	15	Nos.
22	Supply and fixing of batten / angle holder complete in all respect.	15	Nos.
23	Supply and fixing of LED Tube Light with batten suitable for up to 1 X 22 watt LED tube light fitting including tube on Surface complete in all respect.CAT- AAA	5	Nos.

24	Supply and laying of aluminium conductor PVC insulated armoured served sheathed cables 1100 Volts grade at a depth of 750 mm below ground level over a cushion of 75 mm. thick sand all around and protected with burnt bricks on sides and on top. On surface the cable run shall be fixed on M.S. clamps etc. of suitable size or as directed by the Engineer-Incharge, complete in all		
a	16 sq. mm 4 core	100	Meter



- 1) Repair of Part Shaded in Red will be done first in first phase.
- 2) Repair of Part shaded in Blue will be done in Second Phase.
- 3) Two Arrows shows two separate entries.
- 4) The Central Blue Partition will be of Gypsum panel and will have 2 doors of Gypsum Panel.
- 5) Vendor should visit the premises before quoting.

Dimension of One WINDOW

