

Annexure-I

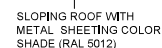
L.1 Labour and Staff Colony: The following are in the Bidder's scope of work for labour & staff colony:

- Development of Bidders temporary staff colony and labour colony having adequate no. of rest rooms along with toilets & fencing etc. (**enclosing drawing for ready reference**).
- **Development of Bidders temporary adequate no. of rest rooms along with toilets at site (enclosing drawing for ready reference).**
- All Civil and Structural work associated with drinking and service water for Bidder's labour and other personnel at the work site/colony/offices including pump houses, pipes, overhead tank, tube wells etc.
- Providing and maintaining facilities for safety, welfare, drinking water and sanitation, hygiene, biennial health check-up etc. for construction workers at their workplaces as well as at labour & staff colonies.
- The facilities for occupational safety, healthy environment, first aid, drinking water, resting place & toilets, canteen, crèche, etc. shall be provided at the workplace for construction workers by the contractor.
- Development and maintenance of above facilities for construction workers hired by the Contractor shall solely rest with the Contractor.
- Proposal for construction of these hutment/labour colony is to be got approved from BHEL/customer before organizing material and execution.
- Land for labour colony along with all arrangement for electricity and drinking/service water is to be arranged by the contractor within his quoted price.

General common Point for GCC.

The contractor shall keep the area of work clean and shall remove the debris etc. while executing day-to-day work. Upon completion of work, the contractor shall remove from the vicinity of work, all scrap, packing materials, rubbish, unused and other materials and deposit them in places specified by the Engineer.

The contractor will also demolish all the hutments, sheds, offices, labour colony, labour rest room etc. constructed and used by him and shall clean the debris. In the event of his failure to do so, the same will be arranged to be done by the Engineer and the expenses recovered from the contractor.

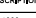



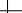


TERRACE PLAN



FINISHING SCHEDULE

EXTERIOR FINISH

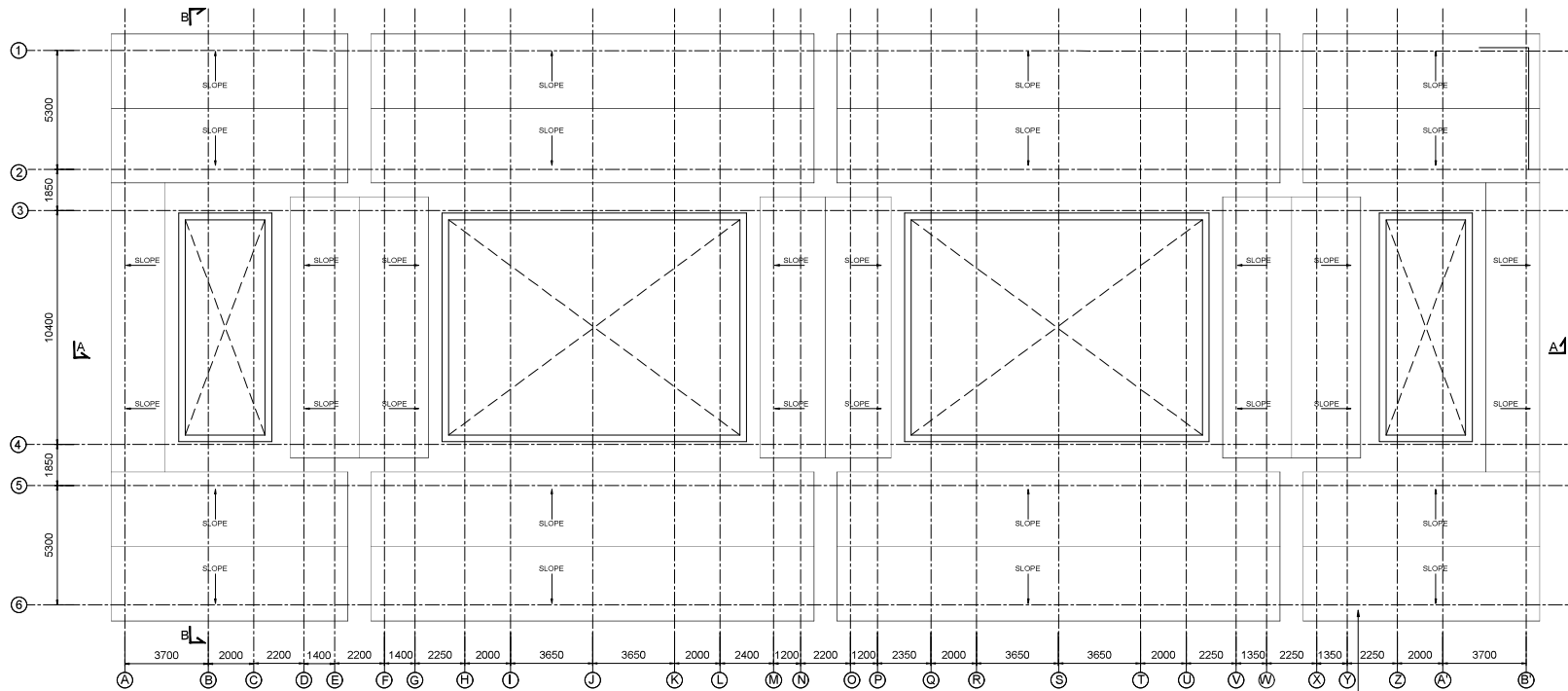
LEGEND	WIDTH	HEIGHT	LINTEL LVL.	DESCRIPTION	REMARKS
D1	1000	2100	2100		COLD ROLLED STEEL DOOR FRAME WITH SOLID CORE FLUSH DOOR SHUTTER
D2	750	2100	2100		COLD ROLLED STEEL DOOR FRAME WITH SOLID CORE FLUSH DOOR SHUTTER

LEGNO	WIDTH	HEIGHT	CELL LEV.	LINTEL LEV.	DESCRIPTION	REMARKS
V1	600	600	1500	2100		STEEL FRAME VENTILATOR WITH FIXED GLASS SHUTTER (6MM THK, TOUGHENED GLASS)
W1	1200	1200	900	2100		ALUMINUM GLAZED WINDOW/ WITH OPENABLE ALUMINUM WITH 4mm THK, CLEAR FLOAT GLASS
W2	1600	1200	900	2100		ALUMINUM GLAZED WINDOW/ WITH OPENABLE & FIXED WINDOW WITH 4mm THK, CLEAR FLOAT GLASS

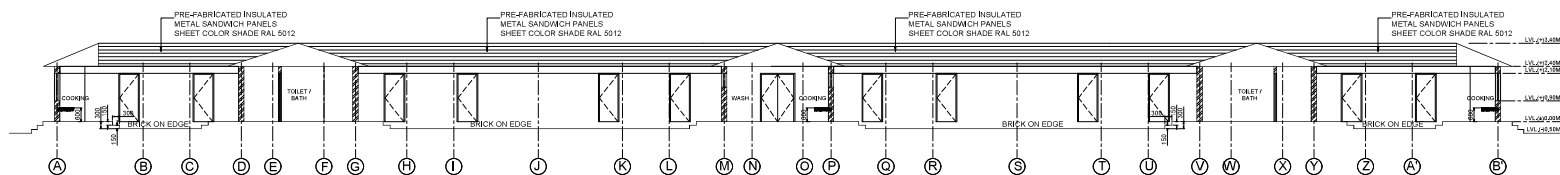
एन टी पी सी लिमिटेड
NTPC Limited
(A GOVERNMENT OF INDIA ENTERPRISE)

NOTES:-

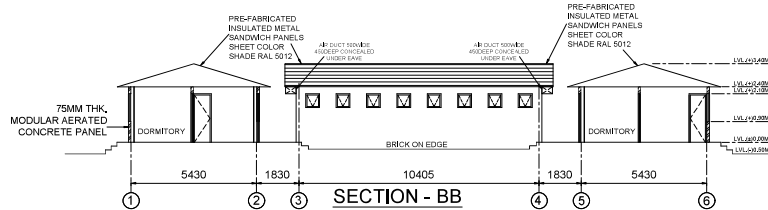
1. ALL DIMENSIONS ARE IN MM AND LEVELS ARE IN METERS.
2. SUITABLE STRUCTURAL ARRANGEMENT SHALL BE DEVELOPED BY BIDDER.



TERRACE PLAN



SECTION - AA



SECTION - BB

NOTES:

1. ALL DIMENSIONS ARE IN MM AND LEVELS ARE IN METERS.
2. SUITABLE STRUCTURAL ARRANGEMENTS SHALL BE DEVELOPED BY THE BIDDER.
3. SEWERAGE TREATMENT PLANT OF ADEQUATE SIZE AS PER NORMS SHALL BE PROVIDED.

FOR TENDER PURPOSE ONLY

										PROJECT										SINGRAULI SUPER THERMAL POWER PROJECT STAGE-III (24500 MW)									
										TITLE										WORKERS ACCOMMODATION FLOOR PLAN & ELEVATIONS									
A RELEASED FOR TENDER PURPOSE										NT/EA		OK												SK		07/2022			
REV. NO.	DESCRIPTION										DRAWN	DESIGN	CHECK	MECH (L-0)	MECH (WS)	ELEC.	C&I	RTG.	APPR.	DATE	SIZE	SCALE	DRG. NO.	REV. NO.					
											CLEARED BY																1:100	1150-999-POC4-019-SH-4	A