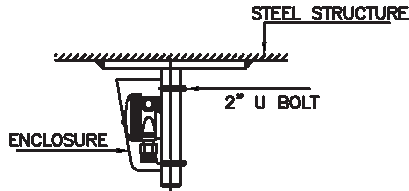
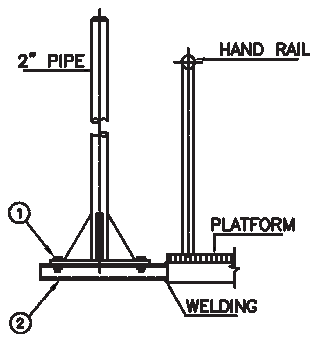
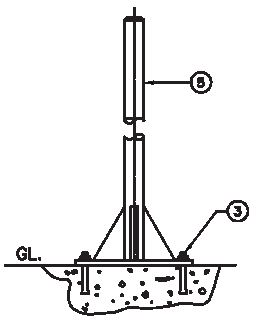
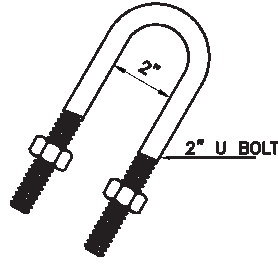
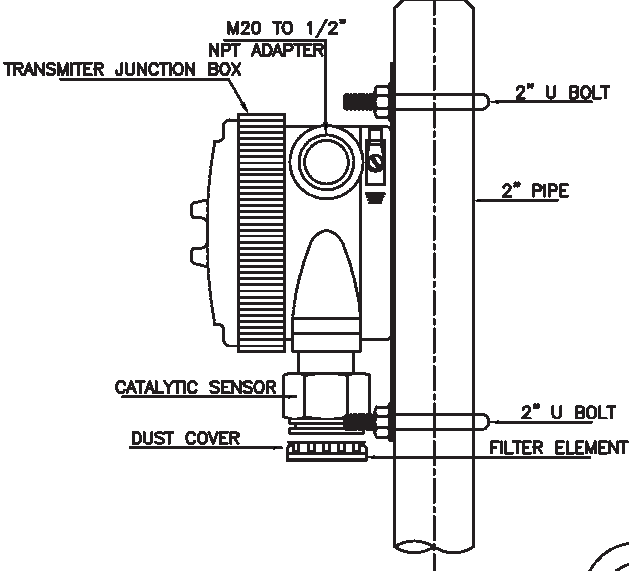
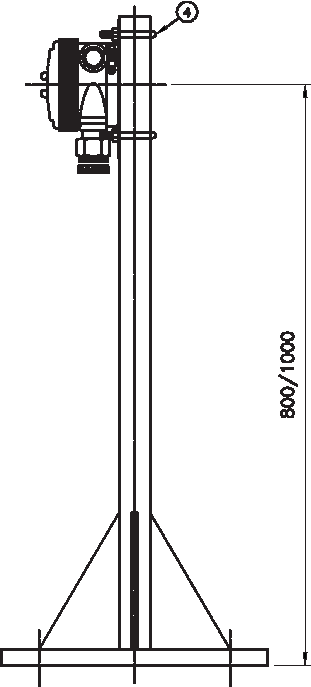


MATERIAL LIST UNIT : mm

NO.	PARTS	SIZE	MATERIAL	QUANTITY
1	HEX. HEAD BOLT / NUT WITH WASHER	M10x35L	SS 316	
2	STEEL CHANNEL	100x50x5	MS	
3	ANCHOR BOLT	M10x80L	SS 316	
4	U BOLT & NUT	2"	SS 316	
5	PIPE SCH 40	2"	CS	



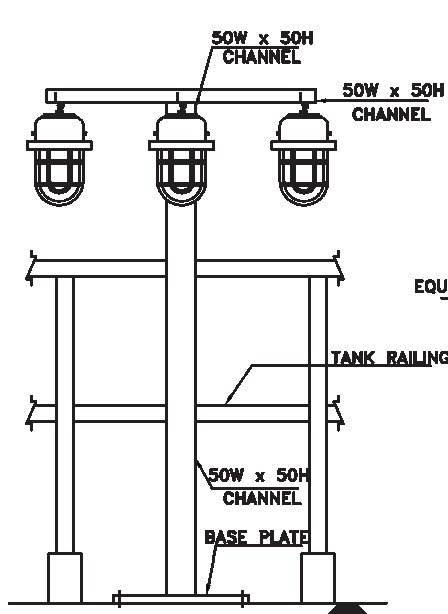
OWNER
 

PROJECT: STANDBY SRU & ADDITIONAL TANKS
 IOCL PARADIP REFINERY, ODISHA, INDIA

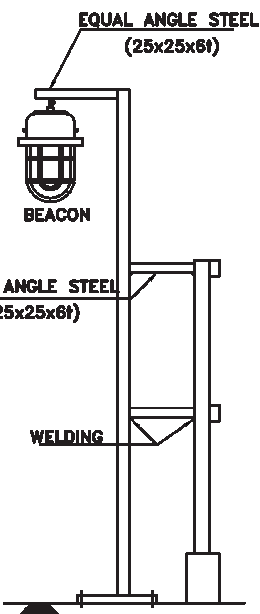
**INSTALLATION OF
 GAS DETECTOR**

CLIENT: INDIAN OIL CORPORATION LTD.

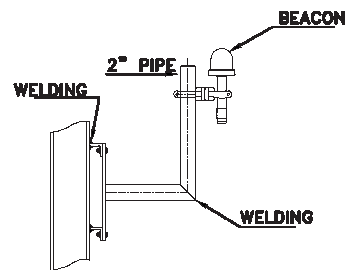
DRAWING NO.				PAGE	REV.
SCALE	080557C	000	STC	1590	003
NTS	PROJECT	UNIT	DOC. TYPE	MAT. CODE	SER. NO.
				31 OF 42	A



ELEVATION

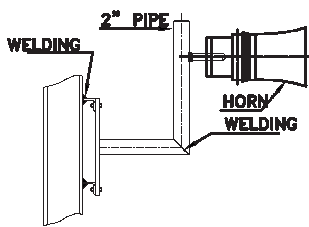


SIDE VIEW

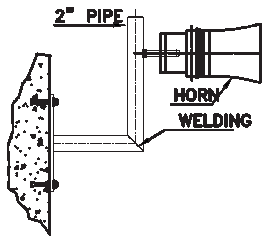


**INSTALLATION ON STEEL STRUCTURE
SIDE VIEW**

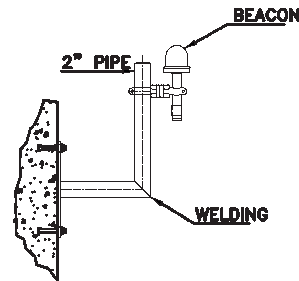
CASE:1



**INSTALLATION ON STEEL STRUCTURE
SIDE VIEW**



**INSTALLATION ON CONCRETE
SIDE VIEW**



**INSTALLATION ON CONCRETE
SIDE VIEW**

CASE:2

OWNER



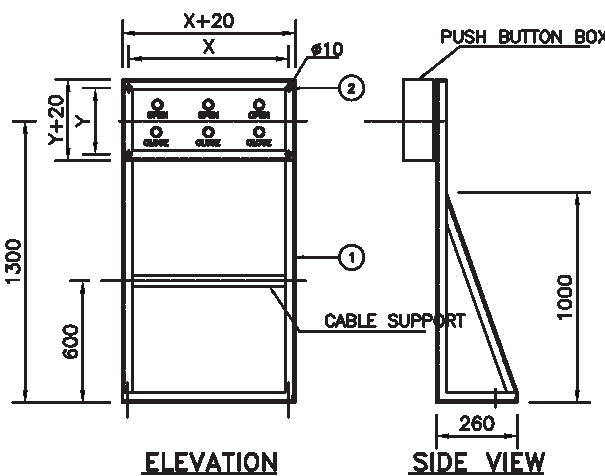
TechnipFMC

PROJECT: STANDBY SRU & ADDITIONAL TANKS
IOCL PARADIP REFINERY, ODISHA, INDIA

INSTALLATION OF
BEACON (LAMPS) / LOUD SPEAKER

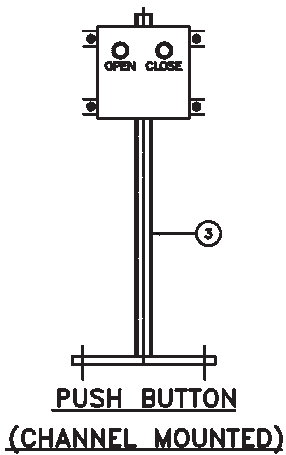
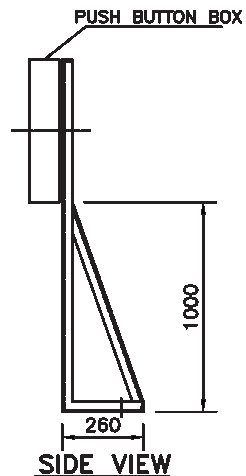
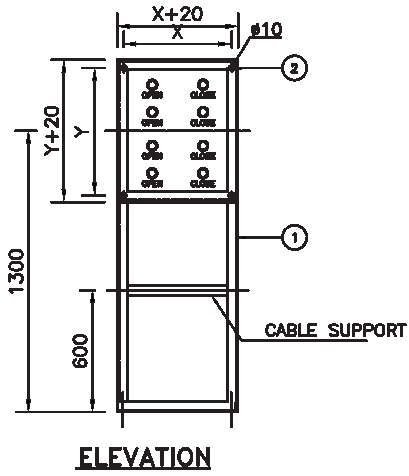
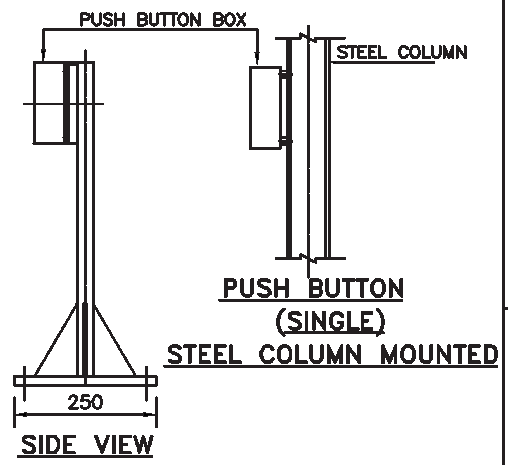
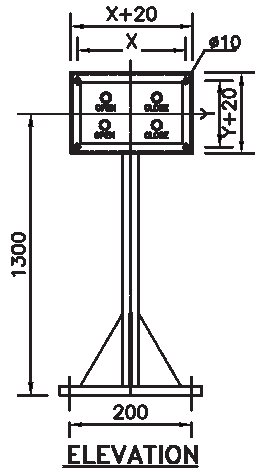
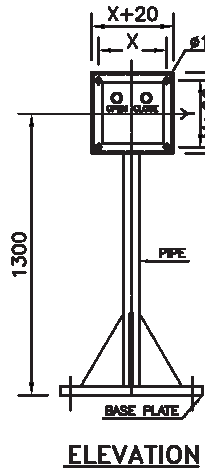
CLIENT: INDIAN OIL CORPORATION LTD.

DRAWING NO.				PAGE	REV.
SCALE	080557C	000	STC	1590	003
NTS	PROJECT	UNIT	DOC. TYPE	MAT. CODE	SER. NO.
				32 OF 42	A



MATERIAL LIST UNIT : mm

NO.	PARTS	SIZE	MATERIAL	QUANTITY
1	STEEL ANGLE	50x50x6t	MS	
2	HEX. HEAD BOLT / NUT WITH WASHER	M8x50L	SS 316	
3	STEEL CHANNEL	100x50x5t	MS	



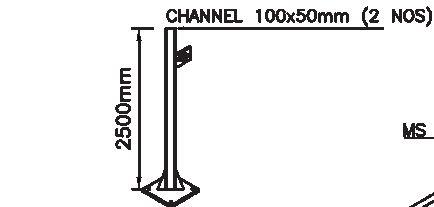
OWNER

PROJECT: STANDBY SRU & ADDITIONAL TANKS
 IOCL PARADIP REFINERY, ODISHA, INDIA

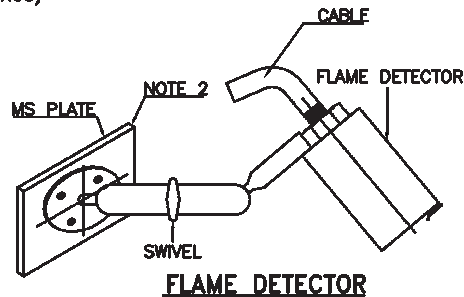
INSTALLATION DETAILS FOR
 PUSH BUTTON STATIONS

CLIENT: INDIAN OIL CORPORATION LTD.

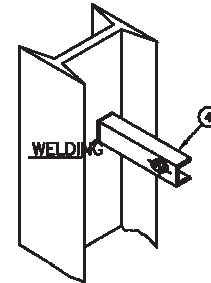
DRAWING NO.				PAGE	REV.
SCALE	080557C	000	STC	1590	003
NTS	PROJECT	UNIT	DOC. TYPE	MAT. CODE	SER. NO.
				33 OF 42	A



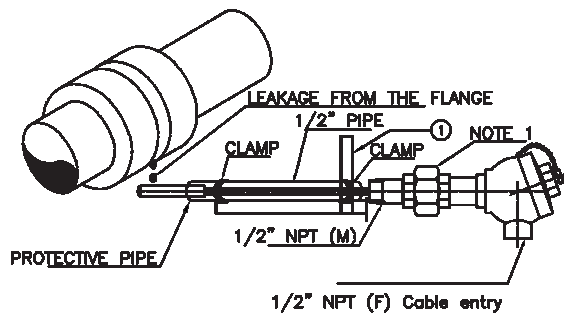
**FLAME DETECTOR
OUTSIDE STEEL STRUCTURE**



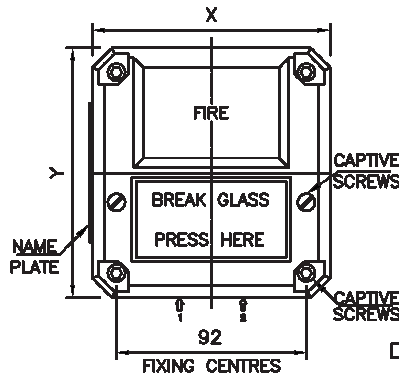
FLAME DETECTOR



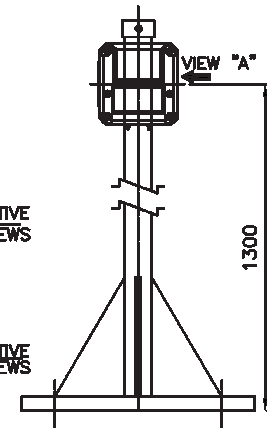
**FLAME DETECTOR
(STEEL COLUMN)**



SPILL DETECTOR (TEMP. DETECTOR)



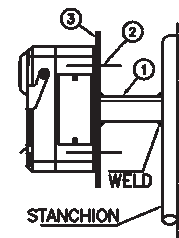
MANUAL CALL POINT



STANCHION MOUNTED

MATERIAL LIST UNIT : mm

NO.	PARTS	SIZE	MATERIAL	QUANTITY
1	STEEL ANGLE	50x50x6t	MS	
2	HEX. HEAD BOLT / NUT WITH WASHER	M5x35L	SS 316	
3	STEEL PLATE	150x150x6t	MS	
4	STEEL CHANNEL	100x50x5t	MS	



**VIEW-A
STEEL MOUNTING**

NOTES:-

- 1) TEMP. DETECTOR (SPILL DETECTOR) TO BE CLAMPED TO THE NEAREST PIPE AT SITE. LEAKAGE FROM FLANGES CAN BE DETECTED BY TEMP. VARIATION.
- 2) M.S. PLATE SHALL BE WELDED TO THE STRUCTURE.



PROJECT: STANDBY SRU & ADDITIONAL TANKS
IOCL PARADIP REFINERY, ODISHA, INDIA

INSTALLATION OF FLAME
DETECTOR, SPILL DETECTOR &
MANUAL CALL POINT

CLIENT: INDIAN OIL CORPORATION LTD.

DRAWING NO.				PAGE	REV.
SCALE	080557C	000	STC	1590	003
NTS	PROJECT	UNIT	DOC. TYPE	MAT. CODE	SER. NO.
				34 OF 42	A