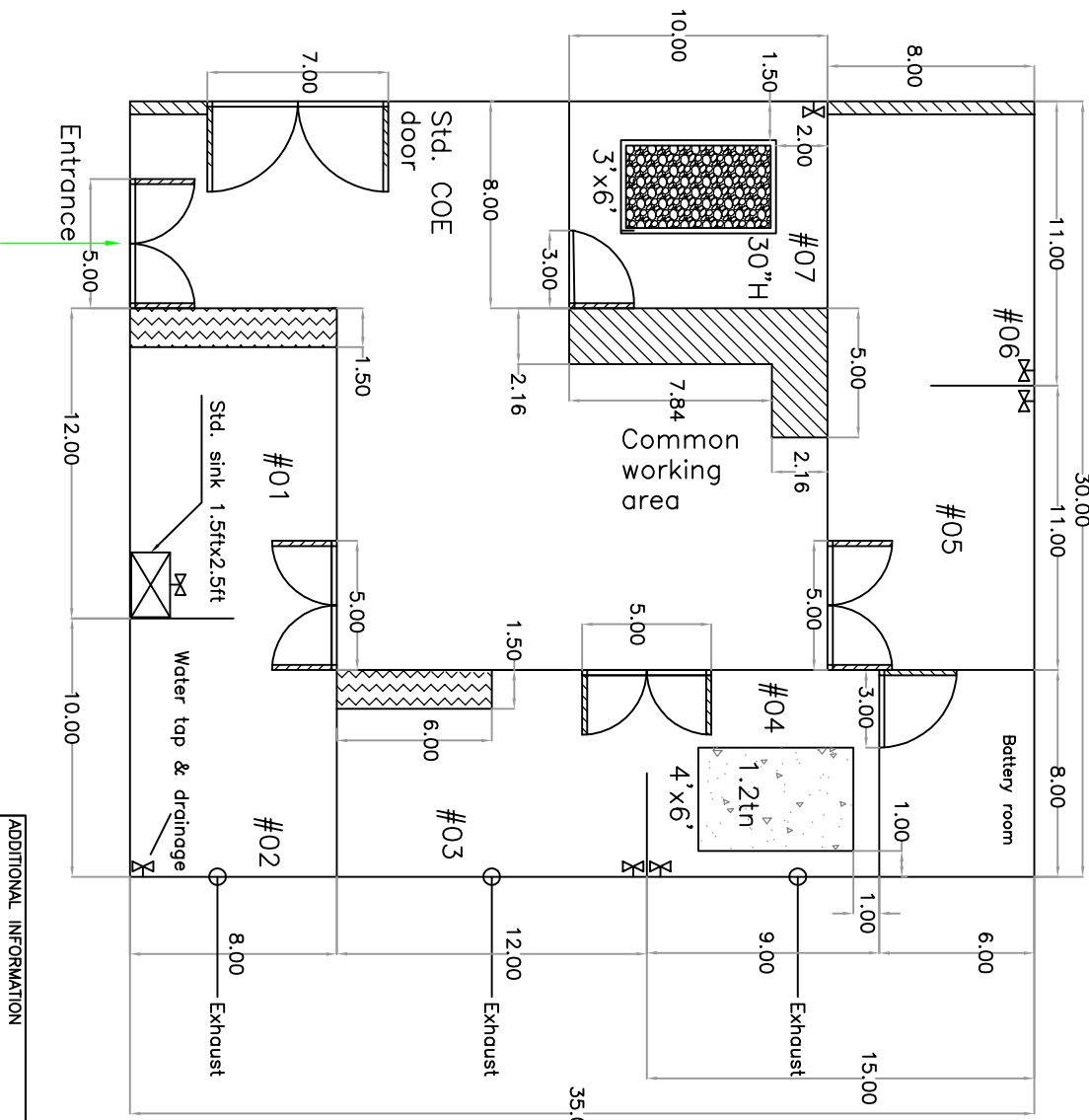


10-4102-29FCR-4
 No. DRAWING
First Angle Projection

All dimensions are in ft



Note: 1. Every room should have provision for water supply of std. OD, Water drainage of 2" OD & air drainage of 2" OD
 2. Room #3 & #4 should be provided with pipe of 2" OD, 25ft length for HZ drainage
 Proposed Civil Work in FCR Lab, ground floor (Old MSL Building).

Sl. No.	Area	Foundation Area	Name of equipment
#01	12'x8'	NA	MEA Assembly room
#02	10'x8'	NA	Ultrasonic spray coating system
#03	8'x12'	NA	Fuel Cell Test Stations
#04	8'x15'	4'x6'x0.5'	Electrolyser
#05	11'x8'	NA	2 Ovens, 2 Rollers, Specific gravity meter & Furnace
#06	11'x8'	NA	Hydraulic Press
#07	8'x10'	NA	MEA Sample Testing Room

ITEM No.	DESCRIPTION	DRAWING No.	MTL. SPECN. MTL. CODE	QTY.	UNIT WT. (Kg.)
#01	Cupboard with door	#01	1.5ft(deep) x 6ft (height) x 8ft length		
#03	Granite platform with std. pullouts	#03	1.5ft(deep) x 6ft (height) x 6ft length		
#06		#06	0.60m(deep) x 2.18m(height) x 2.16m length		
#07		#07	0.60m(deep) x 0.81m(height) x 2.16m length		
			At entrance 0.60m(deep) x 2.18m(height) x 2.16m length		
			0.60m(deep) x 0.81m(height) x 2.16m length		

TYPE OF PRODUCT OR NAME OF THE CUSTOMER/
 PROJECT
FUEL CELL LAB RENOVATION

BHARAT HEAVY ELECTRICALS LTD.
 CORPORATE RESEARCH AND DEVELOPMENT

DRN	NAME	SIGN	DATE	No. OF VAR
CHD	Dnyandeav Ajun		23/05/2017	
APPD	Dr. Vasu Gollangi			
	M.R. Power			

DEPT	MATERIAL	SCALE	TOTAL WT. (Kg.)	REF. TO ASSY. DRG.	ITEM No.	No. OF ITEM
FCR	Equipment	NTS				
CODE 62						
TITLE	Layout plan for Equipment					
	DRAWING No.	4-FCR-62-2017-01		REV.	3	
	SHT. No.	11			No. OF SHTS. 12	

ADDITIONAL INFORMATION	
STATUS OF DRAWING	
DISTRIBUTION OF PRINTS	
REV. DATE	ALTERED
	CHECKED
	APPROVED