

SECTIONAL SIDE ELEVATION - "E-E"

BOILER PARAMETERS (BMCR)

STEAM FLOW AT SUPER HEATER OUTLET	- 2105 t/hr
PRESSURE AT SUPER HEATER OUTLET	- 278 kg./50.cm(G)
TEMPERATURE AT SUPERHEATER OUTLET	- 603 °C
STEAM FLOW AT REHEATER OUTLET	- 1648.7 t/hr
PRESSURE AT REHEATER INLET	- 64.55 kg./50.cm(G)
TEMPERATURE AT REHEATER INLET	- 373.7 °C
PRESSURE AT REHEATER OUTLET	- 61.85 kg./50.cm(G)
TEMPERATURE AT REHEATER OUTLET	- 603 °C
FEED WATER INLET TEMPERATURE	- 308.8 °C

DESCRIPTION OF UNIT
 660 MW ONCE THROUGH SUPERCRITICAL, HAVING TWO PASS, SPIRAL CORNER WATER WALL TUBE, TOP SUPPORTED, SINGLE REHEAT, FANGENTIAL CORNER FIRED FURNACE WITH DIRECT PULVERIZED COAL FIRING, TWO LEVEL OF SEPARATED OVERFIRE AIR, BALANCE DRAFT, RADANT DRY BOTTOM AND SEMI OUTDOOR TYPE.

LEGEND

ALL THE OPENINGS SHOWN ARE APPLICABLE FOR BOTH THE SIDES, UNLESS IT IS SPECIFICALLY WRITTEN.

⊠	LRSB LONG RETRACTABLE SOOT BLOWER
⊠	LRSB FUTURE LONG RETRACTABLE SOOT BLOWER
⊕	WB WALL BLOWER
▲	TP TEMPERATURE PROBE
⊠	AD ACCESS DOOR IN TUBE WALL
⊠	AD SCAFFOLD DOOR IN FURNACE UPPER SIDE WALL
⊠	AD WATER COOLED ACCESS DOOR IN FURNACE LOWER SIDE WALL
⊠	AD ACCESS DOOR IN PENTHOUSE
⊠	AD MAINTENANCE ACCESS DOOR IN PENTHOUSE
⊠	AD HEAT REMOVAL DOOR IN PENTHOUSE TOP

- NOTES**
- ALL ELEVATIONS ARE WITH RESPECT TO EL. (+)0.00m, FINISHED GROUND FLOOR LEVEL OF TG BUILDING AND MILL BAY, WHICH CORRESPONDS TO RL(+305.00 M. FINISHED GROUND FLOOR LEVEL OF BOILER AND ESP AREAS ARE AT (-)0.200m, WHICH CORRESPONDS TO RL(+304.80 M.
 - ALL DUCT DIMENSIONS ARE TO THE INSIDE OF DUCT PLATES.
 - ALL FURNACE OPENINGS ARE IN BOTH SIDES OF FURNACE, UNLESS NOTED.
 - ALL PLATFORM ELEVATIONS ARE TO TOP OF GRATING, UNLESS NOTED.
 - IT IS THE INTENT OF THE GEN. ARRGT'S. TO SHOW ONLY THE MAJOR BOILER EQUIPMENT COMPONENTS AND ACCESSORIES. ALL OTHER EQUIPMENT IS SHOWN TO A LIMITED EXTENT AND ONLY WHERE IT AFFECTS THE BOILER EQUIPMENT ARRANGEMENT.
 - ALL SIZES AND DIMENSIONS SHOWN ARE IN MILLIMETERS.
 - ACCESS WAY AT GROUND LEVEL INSIDE BOILER AREA SHOULD HAVE CLEAR HEADROOM FOR VEHICULAR PASSAGE ALL CABLE TRAY,PIPES,STRUCTURES ETC. SHALL BE ROUTED WITHOUT AFFECTING THIS HEADROOM.REFER "GEN. ARRGT. OF BOILER-PLAN" FOR DETAILS
 - FOR ALL INFORMATION & DIMENSIONS, SEE REFERENCE DRAWINGS.

REFERENCE DRAWINGS

DESCRIPTION	DRAWING NO.
GENERAL ARRGT. OF BOILER SECTIONAL SIDE ELEVATION "E-E"	0-00-022-78655
GENERAL ARRGT. OF BOILER SECTIONAL PLAN "A-A"	0-00-022-78656
GENERAL ARRGT. OF BOILER SECTIONAL PLAN "B-B"	0-00-022-78657
GENERAL ARRGT. OF BOILER SECTIONAL PLAN "C-C"	0-00-022-78658
GENERAL ARRGT. OF BOILER SECTIONAL PLAN "D-D"	0-00-022-78659
GENERAL ARRGT. OF BOILER FRONT ELEVATION	0-00-022-78670
BOILER EQUIPMENT DESIGNATION	1-00-020-71670
BOILER FLOOR PLAN ARRGT. DRAWINGS	0-00-021-78677
LAYOUT OF DUCTING - COLD PRI. AIR DUCT TO APH & MILLS	0-00-020-78668
LAYOUT OF DUCTING - COLD SEC. AIR DUCT TO APH	0-00-020-78669
LAYOUT OF DUCTING - HOT PRI. AIR DUCT TO MILLS	0-00-020-78670
LAYOUT OF DUCTING - HOT SEC. AIR DUCT TO WINDBOX CONNECTING DUCT	0-00-020-78671
LAYOUT OF DUCTING - HOT SEC. AIR TO SOFA	0-00-020-78672
LAYOUT OF DUCTING - GAS DUCT FROM ECONOMISER DUCT TO APH	0-00-020-78673
LAYOUT OF DUCTING - GAS DUCT FROM APH TO BOF	0-00-020-78674
LAYOUT OF ID SYSTEM - ELEVATION	0-00-020-78662
LAYOUT OF ID SYSTEM - PLAN	0-00-020-78663

CUST NO: 1738,1739

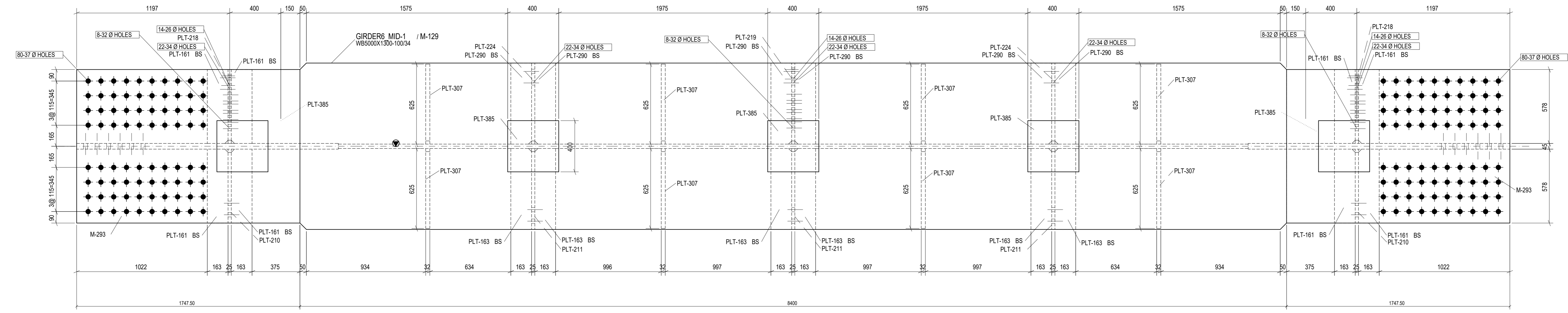
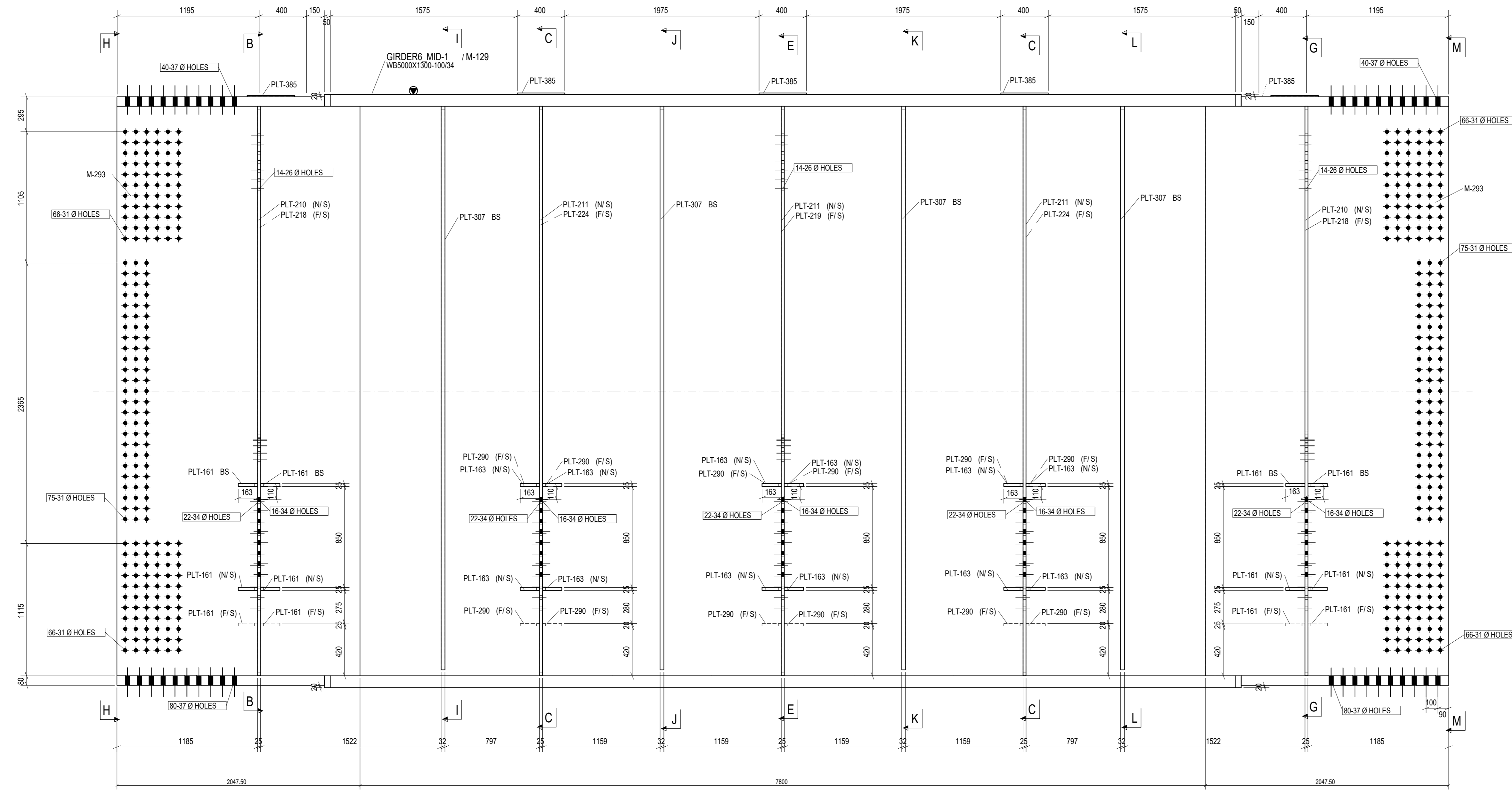
CUSTOMER DRAWING NO.	1125-001-102-PVM-B-100
CUSTOMER	CHHATTISGARH STATE POWER GENERATION COMPANY LTD.
CONSULTANT	N T P C LIMITED
PROJECT	2 X 660 MW SUPER CRITICAL THERMAL POWER PROJECT, HTPS, KORBA WEST, EPC
DESIGNER	BHARAT HEAVY ELECTRICALS LTD
DATE	24.07.25
CHECKED	KISHORE R. KH
DATE	25.07.25
APPROVED	HARIDASRAM M.H
DATE	26.07.25

TITLE: GENERAL ARRANGEMENT OF BOILER SIDE ELEVATION - "E-E"

DEPT: SCALE: 1:150 DRAWING NO: 0-00-022-78655

SHEET 1 OF 1 REV 00

THE INFORMATION ON THIS DOCUMENT IS THE PROPERTY OF BHARAT HEAVY ELECTRICALS LIMITED. NO PART OF THIS DOCUMENT IS TO BE REPRODUCED OR TRANSMITTED IN ANY FORM OR BY ANY MEANS, ELECTRONIC OR MECHANICAL, INCLUDING PHOTOCOPYING, RECORDING, OR BY ANY INFORMATION STORAGE AND RETRIEVAL SYSTEM, WITHOUT THE WRITTEN PERMISSION OF BHARAT HEAVY ELECTRICALS LIMITED.



- NOTES:-
- 1) BOLT HOLE LOCATION DIMENSIONS AND BOLT HOLE PITCH DIMENSIONS ARE CRITICAL TO QUALITY.
 - 2) FOR G.A AND B.o.M REFER DWG NOS: 0-35-212-38521 & 0-35-212-39100.
 - 3) THIS DWG IS TO BE READ ALONG WITH 0-35-212-38516 & 0-35-212-38517.

PLATE NUMBER	DESCRIPTION	QTY	DRAWING NUMBER	ITEM NO	MATERIAL SPECN	UNIT WEIGHT	QTY	ZONE
16	PLATE-12	1		15.611.127	IS2002 E33090	kg	15.672	
15	PLATE-32	1		15.611.131	IS2002 E33090	kg	745.672	
14	PLATE-20	1		15.611.188	IS2002 E33090	kg	16.100	
13	PLATE-25	1		15.611.009	IS2002 E33090	kg	596.163	
12	PLATE-25	1		15.611.009	IS2002 E33090	kg	596.163	
11	PLATE-25	1		15.611.009	IS2002 E33090	kg	543.882	
10	PLATE-25	1		15.611.009	IS2002 E33090	kg	596.163	
9	PLATE-25	1		15.611.009	IS2002 E33090	kg	596.163	
8	PLATE-25	1		15.611.009	IS2002 E33090	kg	596.163	
7	PLATE-25	1		15.611.009	IS2002 E33090	kg	596.163	
6	PLATE-45	1		15.611.009	IS2002 E33090	kg	15.356	
5	PLATE-34	1		15.611.009	IS2002 E33090	kg	3471.741	
4	PLATE-80	1		15.611.009	IS2002 E33090	kg	9992.736	
3	PLATE-100	1		15.611.009	IS2002 E33090	kg	1318.916	
2	PLATE-80	1		15.611.009	IS2002 E33090	kg	8672.200	
1	PLATE-100	1		15.611.009	IS2002 E33090	kg	1318.916	

TYPE OF PRODUCT OR NAME OF CUSTOMER/PROJECT

Bharat Heavy Electricals Ltd
UNIT: HIGH PRESSURE BOILER PLANT
TIRUCHIRAPALLI - 620014

DATE: 30.08.2025
DATE: 30.08.2025
DATE: 30.08.2025

SCALE: NTS

WEIGHT (KG): 51862.071

REF: 15.0501.03.DWG

DRAWING NO: 0-35-212-38515

REV: 01

REV	DATE	ALTERED	BY
01	06.12.2025		K.S.PANDIAN

1 NUMBER REQUIRED AS DRAWN, MARKED GIRDER6_MID-1

