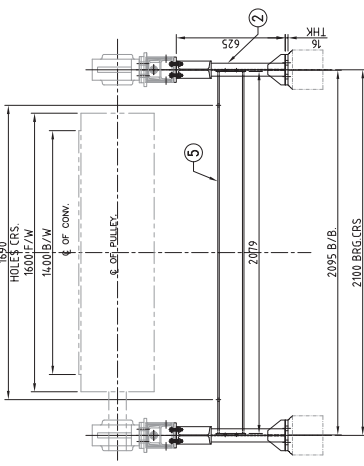


1 X 250 MW NSPCL ROURKELA TPP: TECHNOLOGICAL STRUCTURES PACKAGE**Technical Amendment -01 to BHEL NIT REF 77/22/6052/VVN DATED 15.06.2022**

DOCUMENT NUMBER	Existing Clauses	Amended Clause
IS-1-16-2003/090	Table-1: List of items to be supplied by the bidder (Total 26 item descriptions)	Following items are added to the list: 27. 3 Nos MS fabricated tail pulley frame; Refer annexure-15 (Drawing No RKL-TF-1 which shows the details of tail frame) attached along with this amendment. Approximate total weight of 3 Nos tail frames is 0.9T. 28. 2 Nos MS fabricated head pulley frame; Refer annexure-16 (Drawing No RKL-HF-1 which shows the details of head frame) attached along with this amendment. Approximate total weight of 2 Nos head frames is 6.0T. 29. 40 Nos Flat return rollers suitable for 1000mm belt width; Refer annexure-17 (Drawing No IS-3-GA-708-111-M040 which shows the details of return idler) attached along with this amendment
BOQ	BOQ Rev.00 to be followed for pricing	BOQ Rev.01 to be followed for pricing

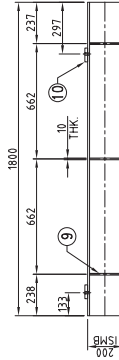
VIEW ON: A-A



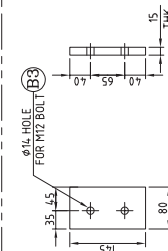
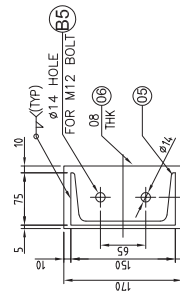
Technical drawing of a pulley assembly. The drawing shows a side view of a pulley with a central shaft. Key dimensions and labels include:

- 1600 E/W**: Total width of the pulley body.
- 1400 B/W**: Width of the pulley body excluding the mounting flanges.
- Ø OF PULLEY**: Indicated by a dashed line and an arrow pointing to the pulley's outer diameter.
- Ø 1.2 INCH FOR M 12 BOLT**: Dimension for the bolt hole diameter.
- 16**: Dimension for the mounting flange thickness.
- 4.38**: Dimension for the distance between the mounting flanges.
- 0.7**: Dimension for the bolt hole offset from the flange face.
- 55**: Dimension for the mounting flange thickness.
- 2100 BRG CFS**: Dimension for the total length of the pulley assembly.
- Ø OF CONV.**: Dimension for the pulley's outer diameter.
- 7**: Dimension for the pulley's outer diameter.

ITEM NO :- 1



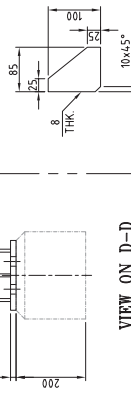
ITEM NO :-10



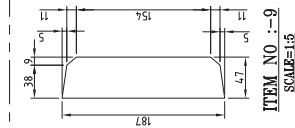
NOTES:

1. ALL DIMENSIONS ARE IN MM & LEVELS ARE IN METER.
2. ALL WELDS ARE 6mm FILLET, UNLESS OTHERWISE STATED.
3. ACTUAL LAYOUT TO BE MADE BEFORE CUTTING THE MEMBER SIZE.
4. SUITABLE NOTCHING TO BE DONE WHEREVER REQUIRED.

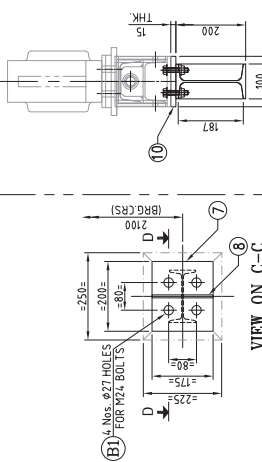
ITEM NO :-8



VIEW ON D D



VIEW NO. F-F



VIEW ON C-

VIEW ON D D






VIEW NO. F-F

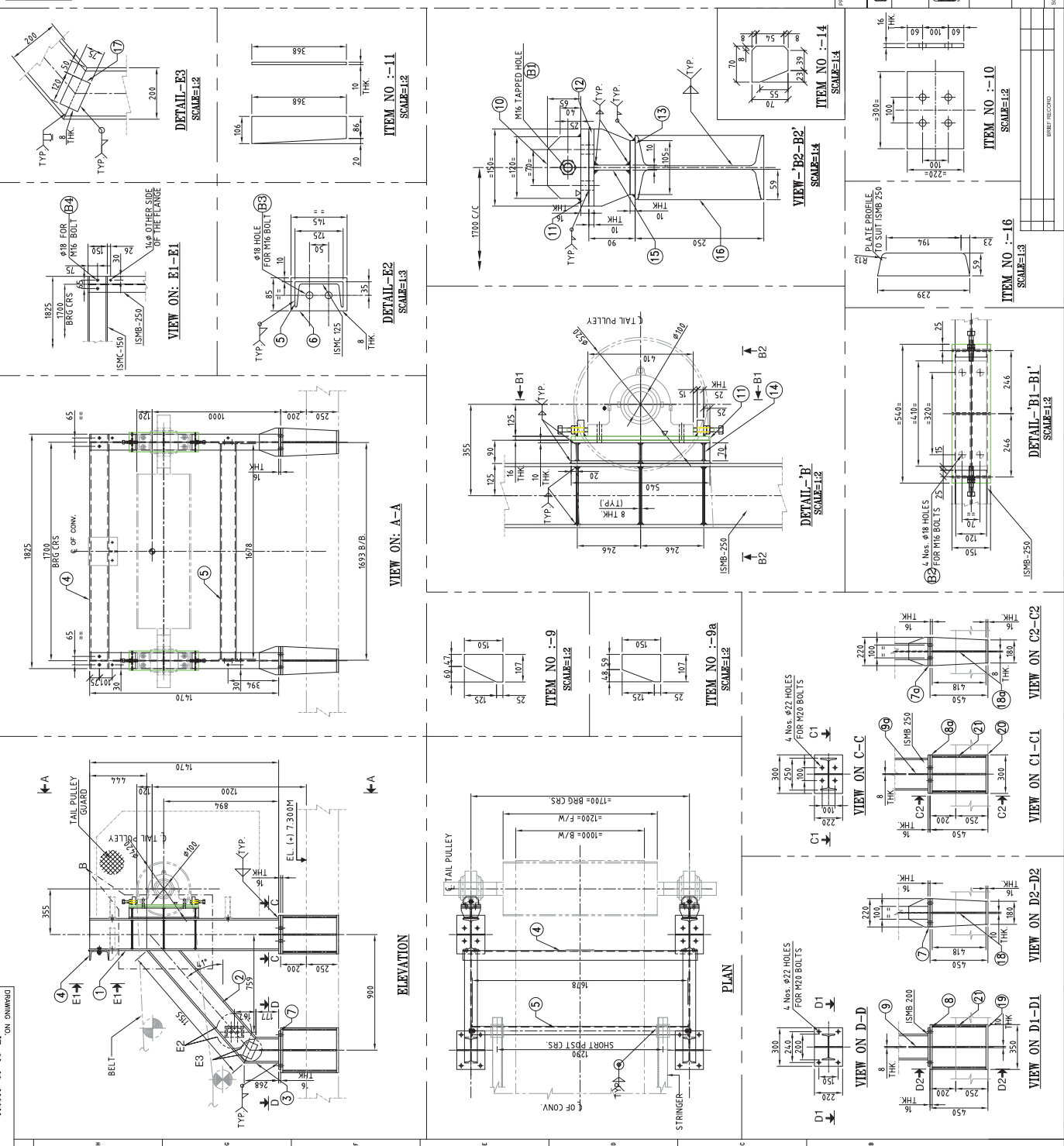
ITEM NO :-8

FASTENER SCHEDULE						
IT NO	LOCATION	FASTNER	TOTAL QTY. IN SETS	UNIT WT. 1 SET (KGS.)	TOTAL WT. KGS.	TOTAL WT. LBS.
B1	FIXING BASE PLATE WITH STRUCTURAL MEMBER	HEX. HD. SCREW M24X100 LGS. WITH HEX. NUT & SPRING WASHER	16	0.220	3.52	8.32
B2	FIXING SLOTTED FRAME UP WITH SLOTTED FRAME WITH FIXING TIE CHANNEL WITH FRAME	HEX. HD. SCREW M12X80 LGS. WITH HEX. NUT & SPRING WASHER	16	0.084	1.34	1.34
					TOTAL WEIGHT	9.66

		TOTAL WT. = 227.13 / EACH Kgs					
		MS	7.5	02	7.5	02	7.05
TAIL FRAME BC-1&B	12 HALF CUT ISMB 150 = 470	MS					
	11 HALF CUT ISMB 150 = 340	MS	7.5	02	5.10		
	10 PL. 15 THK. 80 x 145 Lg.	MS	94.2	04	5.46		
	9 PL. 10 THK. 47 x 187 Lg.	MS	78.5	12	7.90	CTS	
	8 PL. 8 THK. 85 x 100 Lg.	MS	62.8	08	3.11		
	7 PL. 16 THK. 175 x 200 Lg.	MS	125.6	04	17.58	CTS	
	6 PL. 8 THK. 90 x 170 Lg.	MS	62.8	02	1.92		
	5 ISMC 150 = 2079 Lg.	MS	16.8	01	34.92		
	4 ISMC 150 = 2175 Lg.	MS	16.8	01	36.54		
	3 ISMB 150 = 257 Lg.	MS	15	02	7.71		
2 ISMB 150 = 424 Lg.	MS	15	02	12.72			
1 ISMB 200 = 1800 Lg.	MS	24.2	02	87.12			
SECTION/ No	DESCRIPTION	MATL. SPEC.	UNIT	QTY.	TOTAL	REMARKS	

BILL OF MATERIALS

PROJECT:	ROURKELA PP-II EXPANSION PROJECT (1X250 MW)									
	NTPC-LIMITED POWER CORP. LTD.									
	MECON LIMITED ?????? ??????									
	BHARAT HEAVY ELECTRICALS LTD INDUSTRIAL SYSTEMS GROUP, BANGALORE									
	DATE OF ORDER	DATE OF DELIVERY	DATE OF PAYMENT	DATE OF DELIVERY	DATE OF PAYMENT	DATE OF DELIVERY	DATE OF PAYMENT	DATE OF DELIVERY	DATE OF PAYMENT	DATE OF DELIVERY
TITLE:	DETAIL OF TAIL FRAME FOR BC-1443B				NO. OF SHEETS		NO. OF SHEETS		NO. OF SHEETS	
	BILL NO.				BILL NO.				BILL NO.	
SCALE	1:10				1:10				1:10	



<

