



भारत हेवी इलेक्ट्रिकल्स लिमिटेड
पारेषण व्यापार समूह
Bharat Heavy Electricals Limited
Transmission Business Group

Plot No. 25, Sector-16A, Noida, UP - 201 301
Phone: 0120-674-8535; e-mail: skvishwa@bhel.in

Addendum-II to NIT

Project : SJVNL Arun-3 Nepal
Item : Supply of Trench Materials - Cable Trays
NIC Tender ID : 2023_BHEL_22642_1 Dtd. 20.02.2023
BHEL NIT Ref. No. : NIT_72110 Dtd. 20.02.2023
Enquiry : Open Tender (Through NIC)
Bid Opening Date : 06.03.2023

Additional technical drawings for above tender have been appended and shall be read as Addendum-II of the NIT.

The due date & time for Bid Submission and Technical Bid Opening are extended as below:

Bid Submission Date & Time : 14.03.2023, 11:00 Hrs. IST
Technical Bid Opening Date & Time : 14.03.2023, 16:00 Hrs. IST

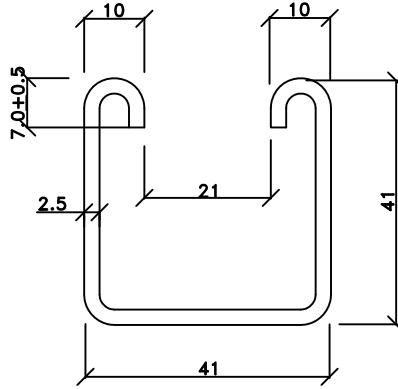
Bidders are requested to submit copy of Addendum-II duly signed & stamped by their authorized signatory and submit along with their technical bid.

All other terms & conditions of the tender specifications remain unchanged.

Kindly acknowledge the receipt.

Yours faithfully,

Santosh Kumar Vishwakarma
Manager, Material Management
BHEL TBG Noida



SINGLE CHANNEL C1

NOTE:

1. ALL DIMENSIONS ARE IN mm.
2. MATERIAL : HOT/ COLD ROLLED M.S. AS PER RELEVANT IS.
3. FINISH : HOT DIP GALVANISED AS PER IS 2629
4. TOLERANCE ON THICKNESS IS AS PER IS 1852
5. PROFILE TOLERANCE ± 0.5 mm

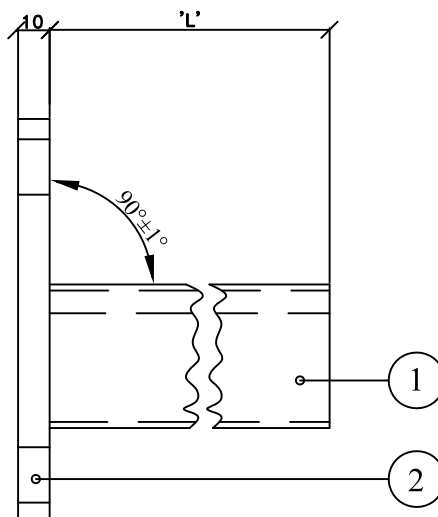
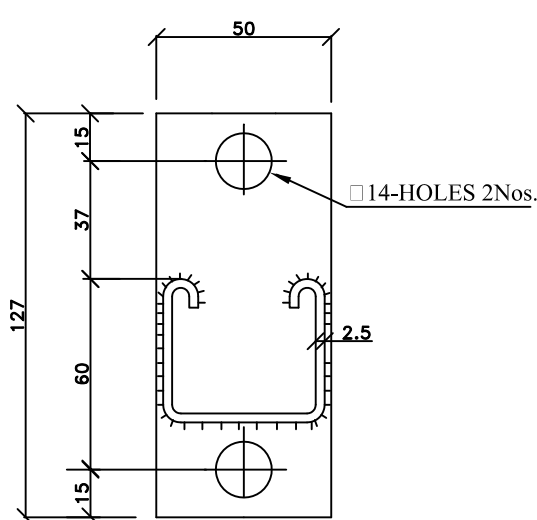


TITLE:

**INSTALLATION DETAILS FOR
CABLE TRAYS SUPPORT SYSTEM**

DRG. NO.

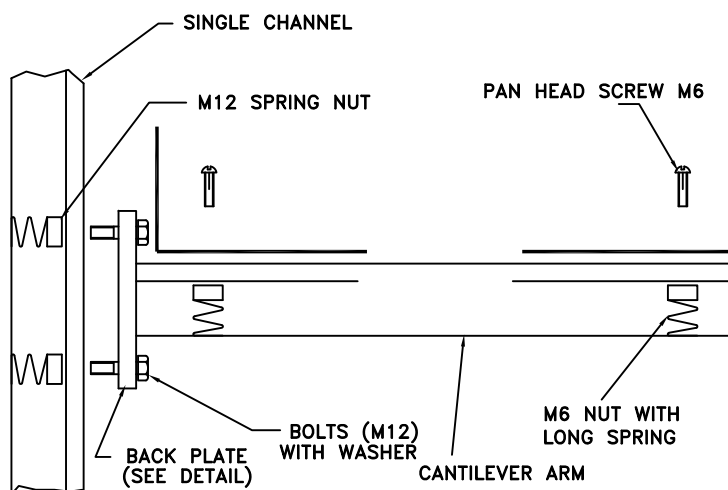
PE-DG-412-507-E006



CANTILEVER ARMS

TRAY WIDTH IN MM	CANTILEVER ARM LENGTH (L) IN MM
---------------------	------------------------------------

600	650
-----	-----



**TYPICAL ASSEMBLY OF CHANNEL
SUPPORTS AND CABLE TRAY**

M12 HEX BOLT & WASHER-2NOs.
M12 SPRING NUTS-2NOs.
M6 PAN HEAD SCREWS & WASHER-2NOs.
M6 SPRING NUTS-2NOs.

NOTES :

1. ALL DIMENSIONS ARE IN mm.
2. ITEM NO.1 MATERIAL : HOT/ COLD ROLLED M.S. AS PER RELEVANT IS.
3. ITEM NO.2 MATERIAL : M.S AS PER IS-2062
4. FINISH : HOT DIP GALVANISED AS PER IS:2629
5. TOLERANCE ON THICKNESS IS AS PER IS:1852
5. ALL FABRICATION TOLERANCES ARE ± 1.0 mm

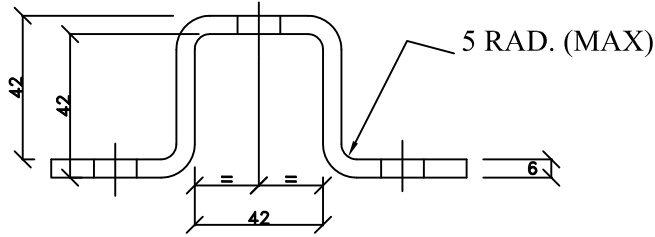
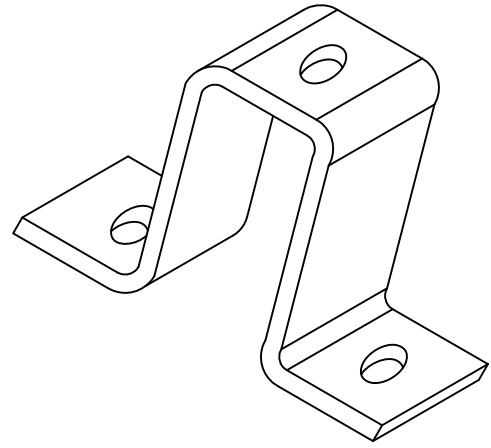
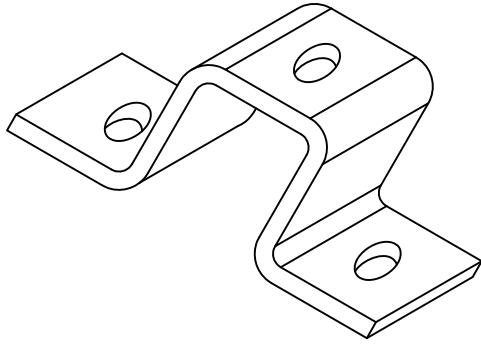
6. All installation hardware included in bidders scope

CA1

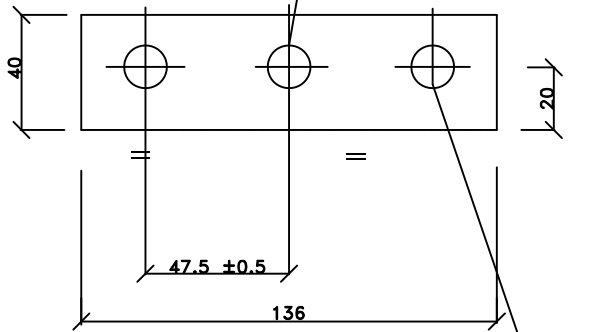


TITLE:
**INSTALLATION DETAILS FOR
 CABLE TRAYS SUPPORT SYSTEM**

DRG. NO.
PE-DG-412-507-E006



Ø14 HOLES
1 Nos



Ø15 HOLES
2 Nos

CLAMP FOR SINGLE CHANNEL CC1

NOTES

1. ALL DIMENSIONS ARE IN mm.
2. ALL FABRICATION TOLERANCES ± 1.0 mm
3. MATERIAL :MILD STEEL AS PER IS-2062
4. FINISH : HOT DIP GALVANISED AS PER IS:2629
5. TOLERANCE ON THICKNESS AS PER IS:1852

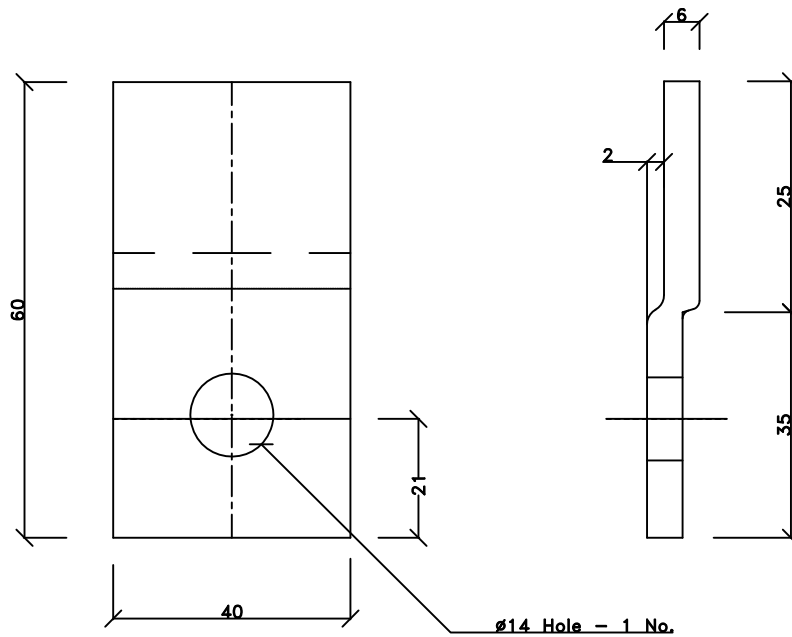
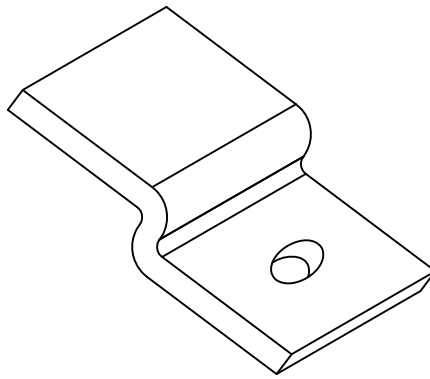
**ANCHOR FASTENER-2NOs.
SPRING NUT & WASHER-1NO.**

**6. All installation hardware included
in bidders scope**



TITLE:
**INSTALLATION DETAILS FOR
CABLE TRAYS SUPPORT SYSTEM**

DRG. NO.
PE-DG-412-507-E006



TRAY FIXING CLAMP - TC1

SPRING NUT & WASHER-1NO.

NOTES

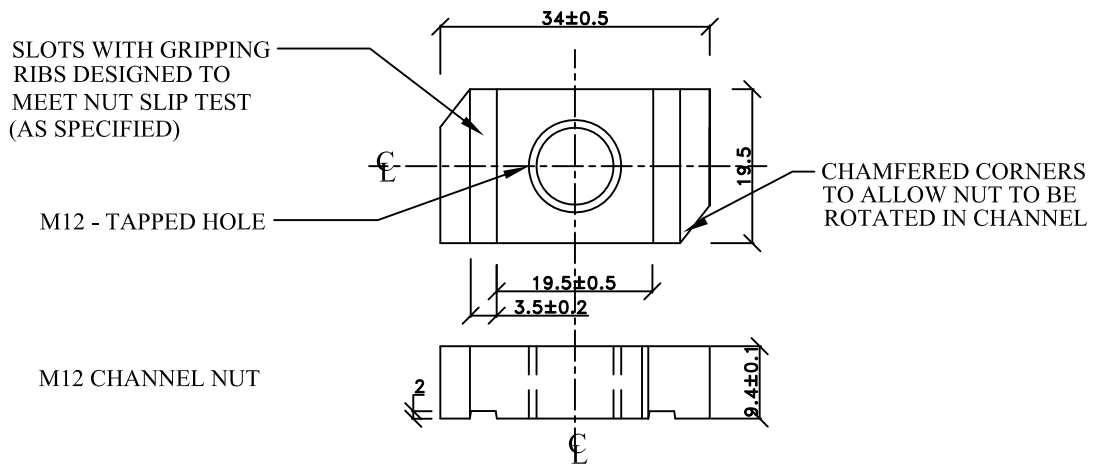
1. ALL DIMENSIONS ARE IN mm.
2. ALL FABRICATION TOLERANCES : $\pm 1.0\text{mm}$
3. MATERIAL :MILD STEEL AS PER IS-2062
4. FINISH : HOT DIP GALVANISED AS PER IS:2629
5. TOLERANCE ON THICKNESS AS PER IS:1852

6. All installation hardware included in bidders scope

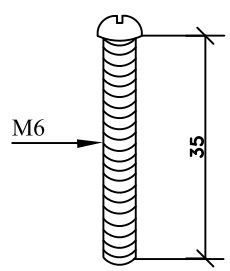


TITLE:
**INSTALLATION DETAILS FOR
 CABLE TRAYS SUPPORT SYSTEM**

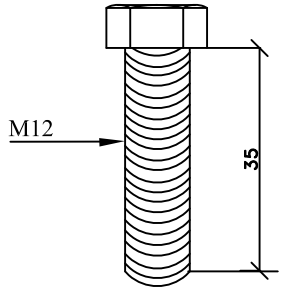
BHEL DRAWING NO.
PE-DG-412-507-E006



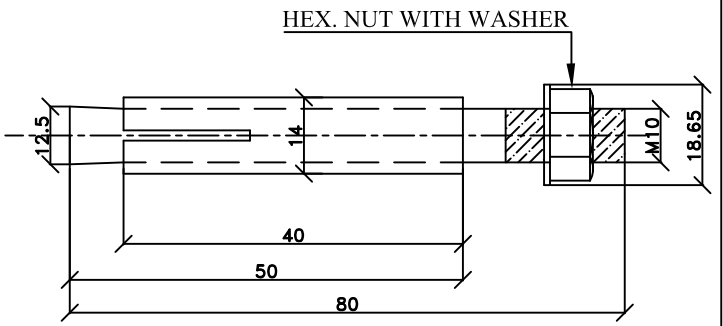
SPRING NUT ASSEMBLY



PAN HEAD SCREW



HEX BOLT



ANCHOR BOLT M10

NOTES:

1. MATERIAL - MS AS PER IS - 2062.
2. M6 CHANNEL NUT DIMENSIONAL SIMILAR TO M12. EXCEPT HOLE DRILLED AND TAPPED TO M6 PAN HEAD SCREWS.
3. TAPPED HOLE THREADING TO MATCH WITH THREADING OF BOLTS.
4. SURFACE PROTECTION ELECTROGALVANISED / CADMIUM PLATED.
5. ALL DIMENSIONS ARE IN MM.



TITLE:
**INSTALLATION DETAILS FOR
 CABLE TRAYS SUPPORT SYSTEM**

BHEL DRAWING NO.
PE-DG-412-507-E006