

## **ADDENDUM-1**

**DATE: 14.03.2025**

**Dust Suppression and Water Systems Package for Singrauli STPP Stage-III (2x800 MW)**

**Tender Ref: 77/24/6170/BPA**

**NIC Tender ID: 2025\_BHEL\_45056\_1**

### **“Extension of due date for submission of offer”**

Due date for submission of Offer has been extended to 24.03.2025

Submission of offer by 1.00 PM on 24.03.2025

Opening of Techno commercial bid at 4.00 PM on 24.03.2025

Any further addendum such issued carry part of the bidding documents and this will be available at the web site from where the original documents have been received / downloaded by the bidder. Hence, bidders are requested to visit the web site on regular basis.

**Pre-Bid Clarification-01 is enclosed.**

**For Further Queries if any, Contact:**

#### **For Commercial :**

**Smt. Bhubaneswari Parida**  
Manager / PG-III  
BHEL-ISG,  
Prof.C.N.R.Rao Circle,  
Bangalore-560 012  
Off: 080 2218 4116,  
e-mail: [bparida@bhel.in](mailto:bparida@bhel.in)

#### **For Technical :**

**Sh. Muralinarayan N**  
Sr. Engineer / PE / Mech  
BHEL-ISG,  
Prof.C.N.R.Rao Circle,  
Bangalore-560 012  
Off: 080 2218 4219,  
e-mail : [mna95@bhel.in](mailto:mna95@bhel.in)

**Pre-Bid Clarification-01 dtd 14.03.2025**

Dust Suppression and Water Systems Package for NTPC Singrauli STPP Stage-III (2x800MW), Uttar Pradesh  
BHEL Tender ref. No. 77/24/6170/BPA

Sl. No.	Tender Document Description	Clause No.	Page No.	Existing Provision	Bidder's Query	Clarification by BHEL
1	Technical Enquiry Specification with enclosures	-	-	-	In the technical specification documents and other annexures and drawings provided by the client, the scope of work and work area of each individual systems are not clearly mentioned. Kindly provide detailed clarity of the same.	Scope of work is amply clear in Technical specifications and annexures.  Bidder to raise specific query if any.
2	NTPC approved vendor list	-	-	-	Kindly provide NTPC's approved vendor list.	NTPC Indicative vendor list is already given as Annexure-12 in technical enclosures of NIT documents. Bidder to kindly refer the same. However, bidder has to submit the vendor list for approval of NTPC/ BHEL post ordering.
3	Technical Enquiry Specification with enclosures	A.3	4	-	In the technical documents, specification of pipes in accordance with the sizes, specification of valves, pumps and other equipments are not mentioned, kindly confirm briefly.	These details are available in NTPC specifications provided in NIT.
4	Technical Enquiry Specification with enclosures	A.4	4	-	In the technical documents, specification of pipes in accordance with the sizes, specification of valves, pumps and other equipments are not mentioned, kindly confirm briefly.	
5	Technical Enquiry Specification with enclosures	-	-	-	Dimensions of the stock yards are not provided in the specifications and also in the tender drawings, kindly provide the same.	Dimensions of stockyards are clearly indicated in the Stockpile Layout & Civil Inputs for Stacker Cum Reclaimer Machine drawing (Dwg No: 1150-001-155-PVM-B-177) given in Annexure-5 of technical enclosures of NIT documents. Bidder to kindly refer the same.
6	Technical Enquiry	A.1, A.2	3	-	In the technical documents, specification of pipes in accordance	These details are available in NTPC

**Pre-Bid Clarification-01 dtd 14.03.2025**

Dust Suppression and Water Systems Package for NTPC Singrauli STPP Stage-III (2x800MW), Uttar Pradesh  
BHEL Tender ref. No. 77/24/6170/BPA

Sl. No.	Tender Document Description	Clause No.	Page No.	Existing Provision	Bidder's Query	Clarification by BHEL
	Specification with enclosures				with the sizes, specification of valves, pumps and other equipments are not mentioned, kindly confirm briefly.	specifications provided in NIT.
7	Technical Enquiry Specification with enclosures	A.7	-	-	Specification, capacity of the sump pumps and its conjugated system is not mentioned, kindly provide the same	As per NIT, complete system design is in the scope of bidder. Capacity of sump pump and its conjugated system to be decided by bidder based on system requirements meeting NIT and same will be subject to approval by NTPC/ BHEL during detail engg after award of order. Specifications are amply clear in this regard.
8	Technical Enquiry Specification with enclosures	A.8	-	-	Kindly provide the requirement of compressed air quantity at what pressure.	Bidder to design and provide the compressed air system for BOBR wagon as per NIT specifications.  Compressed air quantity and pressure shall be decided by bidder as per the design and system requirement.
9	Technical Enquiry Specification with enclosures	A.5	-	-	There is no clarity of the Zero liquid discharge system in the client's documents, kindly provide and clarify the entire specification if the system as well as detailed information of exact locations from where water is to be treated.	Pl. refer NIT spec and also ZLD related documents in Annexure-6 of technical enclosures.  Bidder to design the ZLD system accordingly. Also, refer the CHP, BMHP, LHP & GHP flow diagrams and plot plan attached in Annexure-3 in technical enclosures for facilities/ buildings to be considered in this package for ZLD design.
10	Technical Enquiry Specification	A.6	-	-	There is no clarity of the coal slurry settling system in the client's documents, kindly provide and clarify	Pl. refer NIT spec and CSSP related documents attached in

**Pre-Bid Clarification-01 dtd 14.03.2025**

Dust Suppression and Water Systems Package for NTPC Singrauli STPP Stage-III (2x800MW), Uttar Pradesh  
BHEL Tender ref. No. 77/24/6170/BPA

Sl. No.	Tender Document Description	Clause No.	Page No.	Existing Provision	Bidder's Query	Clarification by BHEL
	with enclosures				the entire specification if the system as well as detailed information about location of tanks, tank specs, etc.	Annexure-6 of technical enclosures.  Bidder to design the CSSP system accordingly. Also, refer the tentative SLD attached as Annexure-8 in technical enclosures for CSSP design.
11	Technical enquiry specification for Dust Suppression & Water Package of Coal, Biomass, Limestone & Gypsum Handling System – Document No.IS-1-23-2008/DS	03.02.12	12 OF 47	Input water terminal point shall be at approx. E 877, N 1358 for Pump House (for both service & potable water) with 1 kg/cm <sup>2</sup> pressure. Bidder's scope shall start from here. All interconnecting piping & pumping system (if required) from this location up to RCC tanks of pump house including motorized & manual isolation valves, puddle flanges shall be in bidder's scope of supply & execution.	Does the common RCC tank have any partition for DFDS / SWS / Plain Water System? In that case we have to consider separate supply lines with its accessories. Please confirm.	Bidder to refer Annexure-8 of technical enclosures
12	Technical enquiry specification for Dust Suppression & Water Package of Coal, Biomass, Limestone & Gypsum Handling System – Document No.IS-1-23-2008/DS	03.02.13	13 of 47	Inside CHP crusher house where both dust suppression and dust extraction systems are envisaged, DFDS/ cold fog DS system has to be provided by bidder at conv. 26A/B discharge points, receipt points of conv. 27A/B.	Please note that there is an ILMS at discharge of Conv.26A/B. These area is usually uncovered at the discharge. So fog nozzles cannot be provided at this location since we need a covered enclosure for the same. <b>Kindly confirm if we have to consider fog nozzles. If Yes , PG cannot be provided at this location.Please confirm.</b> Accordingly discharge points of conv.31A / 31B / 28A / 28B also has ILMS. So fog nozzles cannot be provided at this location since we need a covered enclosure for the same. <b>Kindly confirm if we have to</b>	Bidder's proposal shall be subject to acceptance by NTPC during detail engineering.

**Pre-Bid Clarification-01 dtd 14.03.2025**

Dust Suppression and Water Systems Package for NTPC Singrauli STPP Stage-III (2x800MW), Uttar Pradesh  
BHEL Tender ref. No. 77/24/6170/BPA

Sl. No.	Tender Document Description	Clause No.	Page No.	Existing Provision	Bidder's Query	Clarification by BHEL															
					consider fog nozzles. . If Yes , PG cannot be provided at this location.Please confirm.																
13	Technical enquiry specification for Dust Suppression & Water Package of Coal, Biomass, Limestone & Gypsum Handling System – Document No.IS-1-23-2008/DS	03.02.13	13 of 47	<table><tr><th>Sl. No.</th><th>Area</th><th>Skirt board height in mm</th><th>Skirt length ahead of front end of chute</th><th>Skirt length behind of rear end of chute</th></tr><tr><td>1</td><td>CHP conveyors</td><td>750</td><td>3000</td><td>500</td></tr><tr><td>2</td><td>Belt feeders</td><td>1000</td><td>3000</td><td>500</td></tr></table>	Sl. No.	Area	Skirt board height in mm	Skirt length ahead of front end of chute	Skirt length behind of rear end of chute	1	CHP conveyors	750	3000	500	2	Belt feeders	1000	3000	500	Please note for proper dust suppression we require at least 3.5 times of belt width ahead of front end of chute. <b>Kindly confirm the availability of the same.</b>	Any additional skirt length if required by bidder for proper dust suppression shall be under this package bidder's scope (design, supply, erection etc. including the interconnection with the existing skirt board already provided by conveyor package vendor of BHEL).
Sl. No.	Area	Skirt board height in mm	Skirt length ahead of front end of chute	Skirt length behind of rear end of chute																	
1	CHP conveyors	750	3000	500																	
2	Belt feeders	1000	3000	500																	
14	Technical enquiry specification for Dust Suppression & Water Package of Coal, Biomass, Limestone & Gypsum Handling System – Document No.IS-1-23-2008/DS	06.24.00	33 of 47	Specifically, for DFDS/ cold fog system, make of nozzles considered by bidder shall be from an NTPC approved source. In case, make of nozzles proposed/ considered by bidder is rejected by NTPC, then bidder has to go ahead with other NTPC approved source for nozzles, without any commercial implication.	Make of nozzles is not available in the approved make list. As we are the system provider, we shall provide nozzles as per make previously supplied in NTPC project. <b>Please confirm.</b>	Refer indicative vendor list, BOIs for DFDSS shall be from NTPC approved sources.															
15	Annexure – 8 – Piping SLD tender purpose.	-	1 of 1	SWS / DWS shall be provided MCC / Control rooms/ toilets / etc.	<b>Kindly provide GAD / details with no of floors of all other buildings applicable for SWS and DWS System</b>	MCC GA drawings attached															

**Pre-Bid Clarification-01 dtd 14.03.2025**

Dust Suppression and Water Systems Package for NTPC Singrauli STPP Stage-III (2x800MW), Uttar Pradesh  
BHEL Tender ref. No. 77/24/6170/BPA

Sl. No.	Tender Document Description	Clause No.	Page No.	Existing Provision	Bidder's Query	Clarification by BHEL
16	General Layout for Plant DWG NO. PE-DG-512-100-M001	-	1 of 1	-	Pipelines from Pump House to Gypsum Storage Shed shall be routed through available pipe racks /trestle. <b>Please Confirm.</b>	Noted, however bidder shall provide hume pipes for underground piping in line with NIT spec.
17	Annexure-2 Electrical & C&I scope matrix for DS & Water package of 2x800MW Singrauli TPP Stage-III	K.3	5 of 8	In general sprinkling system is used for Dust suppression. However same is used for suppression of Hot Spots. (Hot Spot detection system is supplied by BHEL). Commands for operation of Solenoid is issued from Hot Spot detection system. Scheme of sequential timer panel to be made such that it can be operated from DCS in sequential Mode and operate individual solenoids through commands from Hot Spot detection system.	The points are contradictory to each other. We presume that the stockpile's solenoid valves shall be operated through sequential timer panel and sequential timer panel can be operated from DCS/PLC. – <b>Please confirm</b>	Bidder to follow specification
	Technical enquiry specification for DS & Water system, Doc no – IS-1-23-2008/DS	03.02.17	14 of 48	Mentioned solenoids shall be operated automatically through PLC of Automatic sprinkler System		
18	Annexure-2 Electrical & C&I scope matrix for DS & Water package of 2x800MW Singrauli TPP Stage-III	A.6	1 OF 8	LT Switchgear excluding bidder supplied	The points are contradictory to each other. We presume that starter feeder for pump motors & power feeders for compressor for all DSS, water & BOBR system are in BHEL's scope of supply. – <b>Please confirm</b>	Bidder to follow specification
		A.7	1 OF 8	LT Switchgear-Bidder supplied like Compressor LCP for this package etc		
		K.1	5 OF 8	All electrical panels for supplied Mechanical equipment such as Isolator panels, Local control Panel, FCU, Solenoid Box, local starter panel, Distribution		

**Pre-Bid Clarification-01 dtd 14.03.2025**

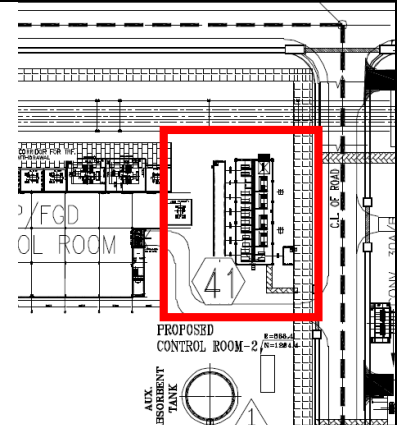
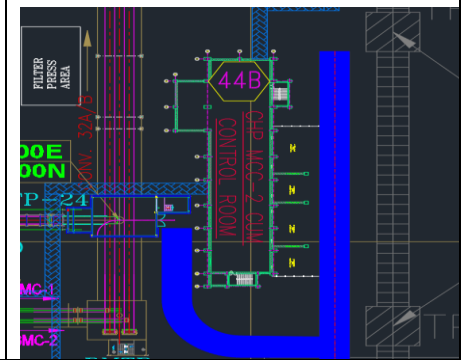
Dust Suppression and Water Systems Package for NTPC Singrauli STPP Stage-III (2x800MW), Uttar Pradesh

BHEL Tender ref. No. 77/24/6170/BPA

Sl. No.	Tender Document Description	Clause No.	Page No.	Existing Provision	Bidder's Query	Clarification by BHEL
				boards, local push button station, Emergency Stop PBs etc., for all drives required for this package is in bidder scope.		
19	-	-	-	General Query	<ol style="list-style-type: none"><li>1. Flow drg. of each system</li><li>2. Layout drg. of plant</li><li>3. Conveyor Details (length, width, capacity, etc.)</li><li>4. Location of pump house</li><li>5. Location of control room</li></ol>	<ol style="list-style-type: none"><li>1. Bidder to refer Annexure-3 in Technical enclosures of NIT documents which has the flow diagrams of CHP, BMHP, LHP &amp; GHP indicating the facilities/buildings and the flow path. Bidder to develop the P&amp;ID of each DS &amp; water systems and submit the same for approvals.</li><li>2. Bidder to refer the Plot plan attached as Annexure-3 in Technical enclosures of NIT documents</li><li>3. Bidder to refer Conveyor profiles attached as Annexure-4, plot plan in Annexure-3 and Conveyor/Building GA drawings in Annexure-5 in Technical enclosures of NIT documents which has the necessary details.</li><li>4. Tentative location of Pump house is already indicated in Plot Plan (Annexure-3) beside Conv-30A/B near TP-20 and also mentioned in NIT spec. Further snap taken from plot plan highlighting the pump house is attached below for your ready reference.</li></ol>

# Pre-Bid Clarification-01 dtd 14.03.2025

Dust Suppression and Water Systems Package for NTPC Singrauli STPP Stage-III (2x800MW), Uttar Pradesh  
BHEL Tender ref. No. 77/24/6170/BPA

Sl. No.	Tender Document Description	Clause No.	Page No.	Existing Provision	Bidder's Query	Clarification by BHEL
20	-	-	-	General Query	1. GA of building for SW and PW System other than TPs. (for LHP System, MCC buildings, Toilets, Etc.)	 <p>5. Control room located near TP-24 marked in plot plan. Further snap taken from plot plan highlighting the control room is attached below for your ready reference</p>  <p>1. Bidder to refer SI No. 6 i) to xii) of Annexure-5 of technical enclosures for drawings of Buildings and conveyors.</p>



**Pre-Bid Clarification-01 dtd 14.03.2025**

Dust Suppression and Water Systems Package for NTPC Singrauli STPP Stage-III (2x800MW), Uttar Pradesh

BHEL Tender ref. No. 77/24/6170/BPA

Sl. No.	Tender Document Description	Clause No.	Page No.	Existing Provision	Bidder's Query	Clarification by BHEL
					2. Conveyor profiles of LHP.	<p>Further, following latest drawings of buildings and conveyors are attached for bidder's reference:</p> <ul style="list-style-type: none"><li>• GA &amp; LOAD DATA OF BELT CONVEYOR - 27AB</li><li>• GA &amp; LOAD DATA OF BELT CONVEYOR - 30AB</li><li>• GA &amp; LOAD DATA OF BELT CONVEYOR - 32AB</li><li>• GA &amp; LOAD DATA OF BELT CONVEYOR - 33</li><li>• GA &amp; LOAD DATA OF BELT CONVEYOR - 31B</li><li>• GA OF TP-22 WITH LOAD DATA</li><li>• GA OF TP-23 WITH LOAD DATA</li><li>• GA OF TP-24 WITH LOAD DATA</li><li>• GA OF TP-25 WITH LOAD DATA</li><li>• GA OF TP-26 WITH LOAD DATA</li><li>• GA OF TP-27 WITH LOAD DATA</li><li>• GA &amp; LOAD DATA OF BELT CONVEYOR - 25AB (CAT-II).</li><li>• GA &amp; LOAD DATA OF BELT CONVEYOR - 26AB (CAT-II).</li><li>• GA OF COAL CRUSHER HOUSE WITH LOAD DATA (CAT-II)</li><li>• GA OF GYPSUM STORAGE SHED WITH LOAD DATA (CAT-II)</li></ul>

**Pre-Bid Clarification-01 dtd 14.03.2025**

Dust Suppression and Water Systems Package for NTPC Singrauli STPP Stage-III (2x800MW), Uttar Pradesh  
BHEL Tender ref. No. 77/24/6170/BPA

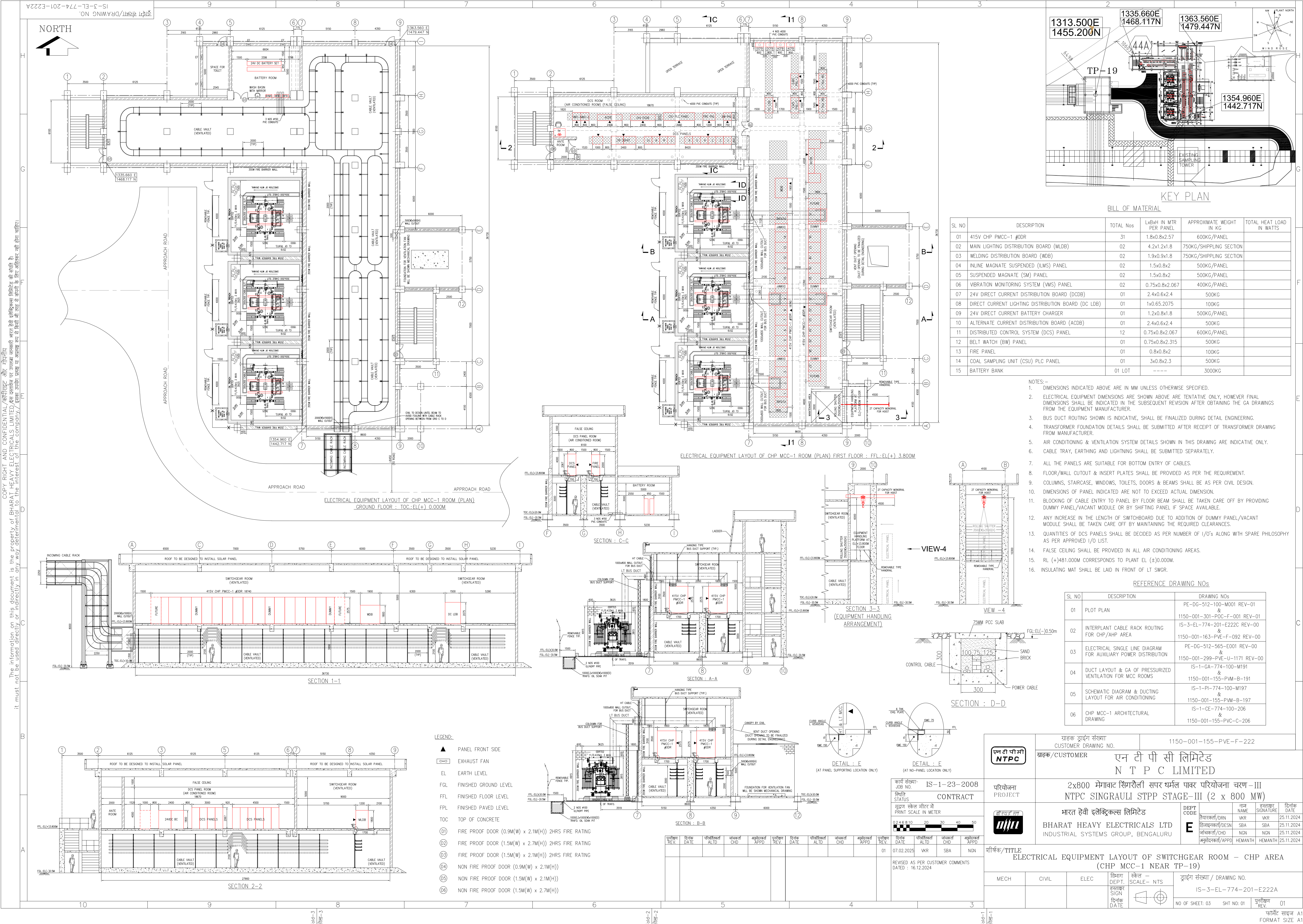
Sl. No.	Tender Document Description	Clause No.	Page No.	Existing Provision	Bidder's Query	Clarification by BHEL
						<ul style="list-style-type: none"><li>• STOCKPILE LAYOUT &amp; CIVIL INPUTS FOR STACKER CUM RECLAIMER MACHINE (CAT-II)</li><li>• GA &amp; LOAD DATA OF BELT CONVEYOR - 28AB (CAT-II)</li></ul> <p>Bidder to refer LHP flow diagram and plot plan (Annexure-3) for details pertaining to LHP. Profiles will be furnished to successful bidder after placement of order</p>

Kindly download the latest building/conveyor drawings from the below mentioned wrench link:

<https://isgdms.bhel.in/isgdms/Guest/DownloadDocs?token=S5xDXnJ0W0ysBsCeg78HjKLWVcrb2ZrmTMbaBlaquiFKdrmj2H%2fkECyrbJd1JIAMAQCqOgoEOD3o4hidvXHksn7UlkYidP0mN3fQillaBjM%3d>

**ELECTRICAL EQUIPMENT LAYOUT  
FOR **CHP MCC-1** NEAR TP-19**





COPY RIGHT AND CONFIDENTIAL (समिपद और गोपनीय) The information on this document is the property of BHARAT HEAVY ELECTRICALS LTD. and it must not be used directly or indirectly in any way detrimental to the interest of the company/एलसीएसएल इलेक्ट्रिकल्स लिमिटेड की संपत्ति है। इसका उपयोग सीधे या अपसीधे रूप से किसी भी ढंग से कंपनी के लिए अनिष्टकारी नहीं होना चाहिए।

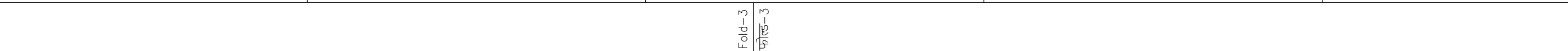
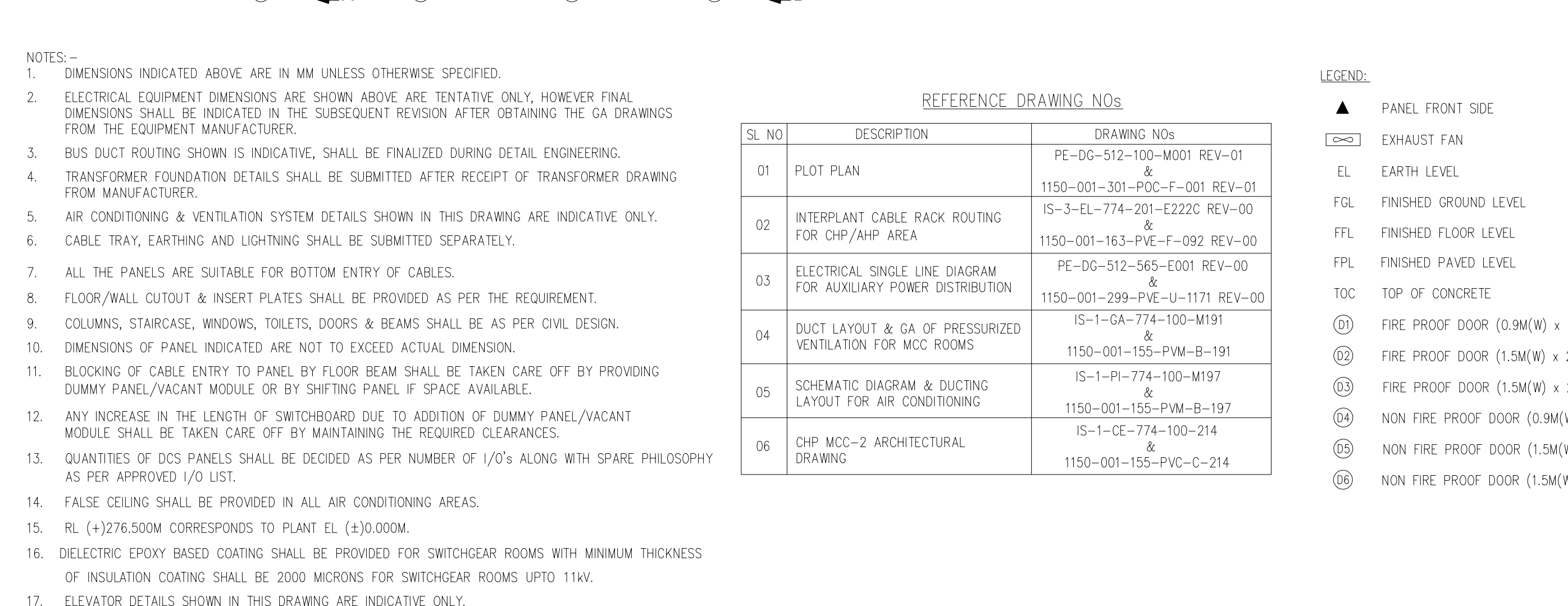
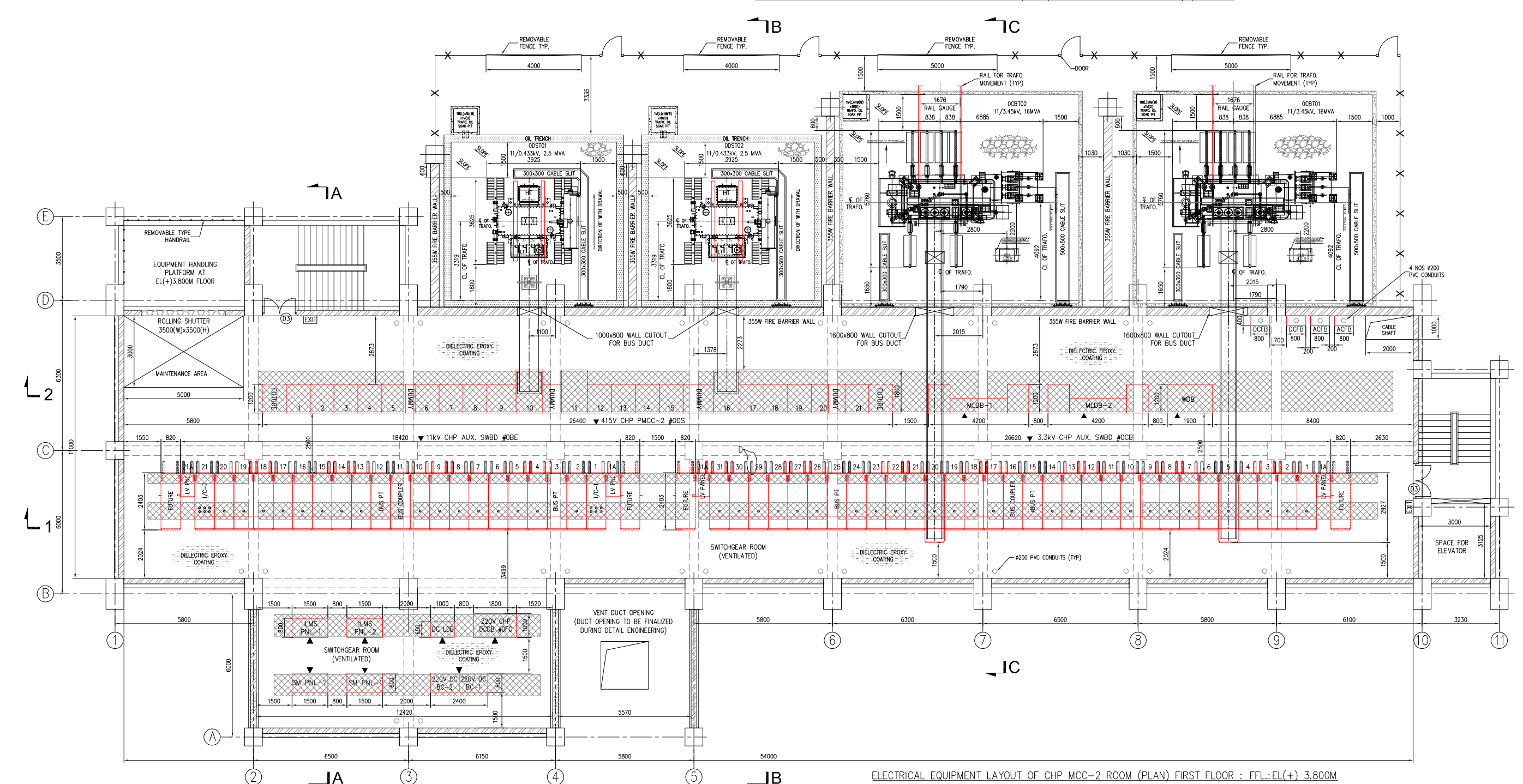
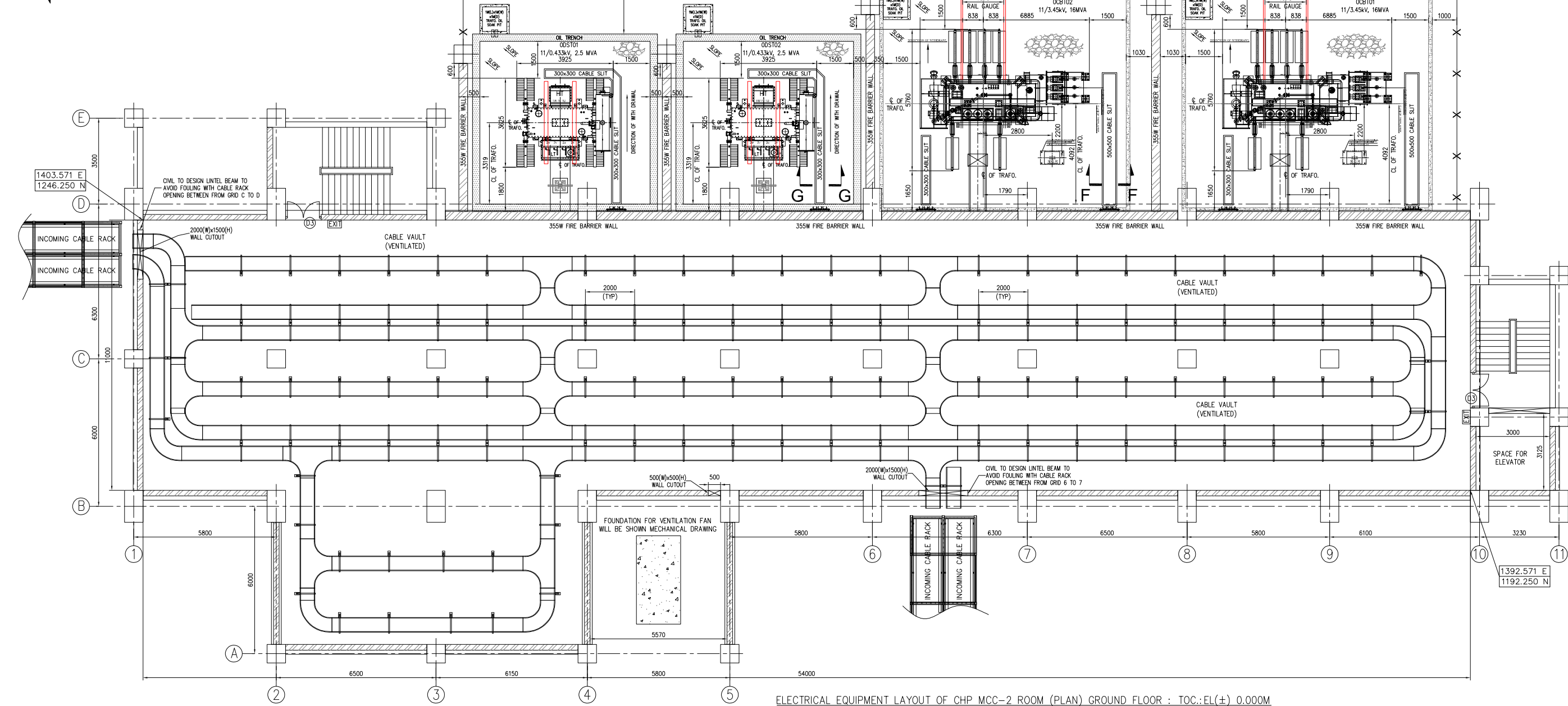
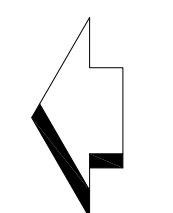
फोल्ड-1 फोल्ड-2 फोल्ड-3 फोल्ड-4



ELECTRICAL EQUIPMENT LAYOUT  
FOR **CHP MCC-2** CUM CONTROL  
ROOM NEAR TP-24



NORTH







PROJECT : 2 x 800 MW NTPC SINGRAULI STPP STAGE-III							
CUSTOMER : NTPC LIMITED							
DRAWING TITLE : ELECTRICAL EQUIPMENT LAYOUT OF SWITCHGEAR ROOM COMBINED FOR CHP MCC-3 & AHP MCC-2 (NEAR TP-21)							
CUSTOMER DRAWING No : 1150-001-155-PVE-F-222A							
SL NO	DRAWING / DOCUMENT No	OLD REV No	CLIENT's APPROVAL CAT	NEW REV No	SL NO	NTPC COMMENTS DATED : 16.12.2024	BHEL REPLY DATED : 03-02-2025
Comments on document no: 1150-001-155-PVE-F-222A, SHT NO 04 OF 04							
						Location of CHP MCC-3 is changed due to relocation of FO storage tanks. This is in line with TEAMS meeting with BHEL dated 04.12.2024	This drawing has been submitted with separate drawing No: 1150-001-155-PVE-F-222A, ELECTRICAL EQUIPMENT LAYOUT OF SWITCHGEAR ROOM COMBINED FOR CHP MCC-3 & AHP MCC-2 (NEAR TP-21) Earlier location of CHP MCC-3 near Lime Silo had to relocated to accommodate FO tanks as discussed with NTPC & PEM. Hence, the CHP loads are now relocated based on the nearest MCC building. LHP-GHP MCC is located inside ESP CR building Unit-9 and CHP loads related to DSPH and Bunker are located in the combined MCC building near TP-21
					62	shall be provided as per provision indicated in tech	Noted.
					63	Typical comment : BHEL to note that details of Air conditioning system, ventilation System, Fire detection & Protection System etc has not been submitted & finalised. BHEL to ensure that the indicated details shall be reviewed as per	Noted. Electrical layout prepared based on preliminary inputs available. The details of bought out items like Air conditioning, ventilation, fired detection etc. will be updated as and when equipment details are received from vendor.
					64	shall be provided as per provision indicated in tech	Noted.
					66	shall be provided as per provision indicated in tech	Noted.
					67	Explain bus duct connections	Incorporated in the revised drawing.
					69	Typ. Comment: All related mechanical drawings (pertaining to Air conditioning syste\Ventilation System	Noted & Drawing no mentioned in table under "reference drawing list"
					71	& ventilation system	Noted.
					72	Refer the comments on the sheet -1	Noted
					73	the same shall be finalised during detailed as per tech specification. Include the list of related drawings in the	Noted & Drawing no mentioned in table under "reference drawing list"



SL. NO	DESCRIPTION	DRAWING NOS
01	PLOT PLAN	PE-DG-512-100-M001 REV-01 & 1150-001-301-POC-F-001 REV-01
02	INTERPLANT CABLE RACK ROUTING FOR CHP/AHP AREA	IS-3-EL-774-201-E222E REV-00 & 1150-001-163-PVE-F-092 REV-00
03	ELECTRICAL SINGLE LINE DIAGRAM FOR AUXILIARY POWER DISTRIBUTION	PE-DG-512-565-001 REV-00 & 1150-001-299-PVE-U-1171 REV-00
04	DUCT LAYOUT & GCA OF PRESSURIZED VENTILATION FOR MCC ROOMS	IS-1-GA-774-100-M191 & 1150-001-155-PWM-B-191
05	SCHEMATIC DIAGRAM & DUCTING LAYOUT FOR AIR CONDITIONING	IS-1-PI-774-100-M197 & 1150-001-155-PWM-B-197
06	CHP MCC-3 ARCHITECTURAL DRAWING	IS-1-CE-774-100-222 & 1150-001-155-PVC-C-222

**LEGEND:**

- |     |  |
|-----|--|
| ▲   | PANEL FRONT SIDE                                     |
| ☐   | EXHAUST FAN  |
| EL  | EARTH LEVEL  |
| FGL | FINISHED GROUND LEVEL                                |
| FFL | FINISHED FLOOR LEVEL                                 |
| FPL | FINISHED PAVED LEVEL                                 |
| TOC | TOP OF CONCRETE                                      |
| ①   | FIRE PROOF DOOR (0.9M(W) x 2.1M(H)) 2HRS FIRE RATING |
| ②   | FIRE PROOF DOOR (1.5M(W) x 2.7M(H)) 2HRS FIRE RATING |
| ③   | FIRE PROOF DOOR (1.5M(W) x 2.1M(H)) 2HRS FIRE RATING |
| ④   | NON FIRE PROOF DOOR (0.9M(W) x 2.1M(H))              |
| ⑤   | NON FIRE PROOF DOOR (1.5M(W) x 2.1M(H))              |

NOTES: —

1. DIMENSIONS INDICATED ABOVE ARE IN MM UNLESS OTHERWISE SPECIFIED.
2. ELECTRICAL EQUIPMENT DIMENSIONS ARE SHOWN ABOVE ARE TENTATIVE ONLY, HOWEVER FINAL DIMENSIONS SHALL BE INDICATED IN THE SUBSEQUENT REVISION AFTER OBTAINING THE GA DRAWINGS FROM THE EQUIPMENT MANUFACTURER.
3. BUS DUCT ROUTING SHOWN IS INDICATIVE, SHALL BE FINALIZED DURING DETAIL ENGINEERING.
4. TRANSFORMER FOUNDATION DETAILS SHALL BE SUBMITTED AFTER RECEIPT OF TRANSFORMER DRAWING FROM MANUFACTURER.
5. AIR CONDITIONING & VENTILATION SYSTEM DETAILS SHOWN IN THIS DRAWING ARE INDICATIVE ONLY.
6. CABLE TRAY, EARTHING AND LIGHTNING SHALL BE SUBMITTED SEPARATELY.
7. ALL THE PANELS ARE SUITABLE FOR BOTTOM ENTRY OF CABLES.
8. FLOOR/WALL CUTOUT & INSERT PLATES SHALL BE PROVIDED AS PER THE REQUIREMENT.
9. COLUMNS, STAIRCASE, WINDOWS, TOILETS, DOORS & BEAMS SHALL BE AS PER CIVIL DESIGN.
10. DIMENSIONS OF PANEL INDICATED ARE NOT TO EXCEED ACTUAL DIMENSION.
11. BLOCKING OF CABLE ENTRY TO PANEL BY FLOOR BEAM SHALL BE TAKEN CARE OFF BY PROVIDING DUMMY PANEL/VACANT MODULE OR BY SHIFTING PANEL IF SPACE AVAILABLE.
12. ANY INCREASE IN THE LENGTH OF SWITCHBOARD DUE TO ADDITION OF DUMMY PANEL/VACANT MODULE SHALL BE TAKEN CARE OFF BY MAINTAINING THE REQUIRED CLEARANCES.
13. QUANTITIES OF DCS PANELS SHALL BE DECIDED AS PER NUMBER OF I/O'S ALONG WITH SPARE PHILOSOPHY AS PER APPROVED I/O LIST.
14. FALSE CEILING SHALL BE PROVIDED IN ALL AIR CONDITIONING AREAS.
15. RL (+)276.500M CORRESPONDS TO PLANT EL ( $\pm$ )0.000M.
16. INSULATING MAT SHALL BE LAID IN FRONT OF THE LT SWITCHGEAR.


### BILL OF MATERIAL

SL NO	DESCRIPTION	TOTAL Nos	LxBxH IN MTR PER PANEL	APPROXIMATE WEIGHT IN KG	TOTAL HEAT LOAD IN WATTS
01	415V CHP PMCC-3	25	1.8x0.8x2.57	600KG/PANEL	
02	CHP MAIN LIGHTING DISTRIBUTION BOARD (MLDB)	01	5.1x1.2x1.8	750KG/SHIPPING SECTION	
03	CHP WELDING DISTRIBUTION BOARD (WDB)	01	3x0.9x1.8	750KG/SHIPPING SECTION	
04	CHP VIBRATION MONITORING SYSTEM (VMS) PANEL	02	0.75x0.8x2.067	400KG/PANEL	
05	CHP 24V DIRECT CURRENT DISTRIBUTION BOARD (DCDB)	01	2.4x0.6x2.4	500KG	
06	CHP 24V DIRECT CURRENT BATTERY CHARGER	01	1.2x0.6x1.8	500KG/PANEL	
07	CHP DIRECT CURRENT LIGHTING DISTRIBUTION BOARD (DC LDB)	01	1x0.65.2075	100KG	
08	CHP ALTERNATE CURRENT DISTRIBUTION BOARD (ACDB)	01	2.4x0.6x2.4	500KG	
09	CHP DISTRIBUTED CONTROL SYSTEM (DCS) PANEL	09	0.75x0.8x2.315	600KG/PANEL	
10	CHP COAL SAMPLING UNIT (CSU) PANEL	01	0.75x0.8x2.315	600KG/PANEL	
11	CHP BELT WATCH (BW) PANEL	01	0.75x0.8x2.315	500KG	
12	CHP FIRE PANEL	01	0.8x0.8x2	100KG	
13	CHP BATTERY BANK 220V DC	01 LOT	----	3000KG	
14	CHP BATTERY BANK 24V DC	01 LOT	----	3000KG	

<div>ग्राहक ड्राइंग संख्या CUSTOMER DRAWING NO.</div>		1150-001-155-PVE-F-222A				
<div>एन टी पी सी NTPC</div>	<div>ग्राहक/CUSTOMER एन टी पी सी लिमिटेड N T P C LIMITED</div>					
<div>परियोजना PROJECT</div>	<div>2x800 मेगावाट सिंगरौली स्पर चर्मल पावर परियोजना चरण-III NTPC SINGRAULI STPP STAGE-III (2 x 800 MW)</div>					
<div>भारत हेवी इलेक्ट्रिकल्स BHEL</div>	<div>भारत हेवी इलेक्ट्रिकल्स लिमिटेड BHARAT HEAVY ELECTRICALS LTD INDUSTRIAL SYSTEMS GROUP, BENGALURU</div>	<div>DEPT CODE</div> <div>E</div>	<div>नियंत्रक/DRN डिजाइनर/DES चेककर्ता/CHD अनुमोदक/APPD</div>	<div>नाम NAME</div> <div>AKA AKA SBA NGN</div>	<div>हस्ताक्षर SIGNATURE</div> <div>AKA AKA SBA NGN</div>	<div>दिनांक DATE</div> <div>05/02/2025 05/02/2025 05/02/2025 05/02/2025</div>

शीर्षक/TITLE

ELECTRICAL EQUIPMENT LAYOUT OF SWITCHGEAR ROOM  
COMBINED FOR CHP MCC-3 & AHP MCC-2 (NEAR TP-21)

MECH	CIVIL	ELEC	विभाग DEPT.	स्केल - SCALE - NTS	ड्राइंग संख्या / DRAWING NO.
			हस्ताक्षर SIGN		IS - 3-EL-774-201-E222A-1
			दिनांक DATE		NO OF SHEET: 01    SHT NO: 01    पुनरीक्षण REV.    00

फॉर्मेट साइज A  
FORMAT SIZE A

COPY RIGHT AND CONFIDENTIAL/कॉपीराइट और गोपनीय

The information on this document is the property of BHARAT HEAVY ELECTRICALS LIMITED. Any disclosure of this information to any third party without the prior written consent of the company is strictly prohibited. The information on this document is the property of BHARAT HEAVY ELECTRICALS LIMITED. Any disclosure of this information to any third party without the prior written consent of the company is strictly prohibited.