

Addendum#1 to Expression of Interest (EOI) (PPX-DABG/EOI/22-23/02)

An Addendum is issued for the EOI **(PPX-DABG/EOI/22-23/02)**. Structure assembly & Back Cover Assembly of KIT DAVIDE INSTALLATION (COVER) has been added.

The EOI document of above-mentioned assemblies with scope of work is as below. List of documents for above mentioned assemblies is as per Annexure -A.

LIST OF ADDED ASSEMBLIES AND SCOPE OF WORK

1. Structure Assembly (Heli-coil pre-assembly) of KIT DAVIDE INSTALLATION (COVER)

- Scope of Work

- a. Procurement of Raw Material
- b. Cutting, welding etc as per Drawing as applicable.
- c. Assembly

- Essential Inhouse Machining Facilities required for working on aluminium alloy sheet /plate

- a. Cutting M/c (Laser/Waterjet)
- b. Welding Facilities

2. Back Cover Assembly (Heli-coil pre-assembly) of KIT DAVIDE INSTALLATION (COVER)

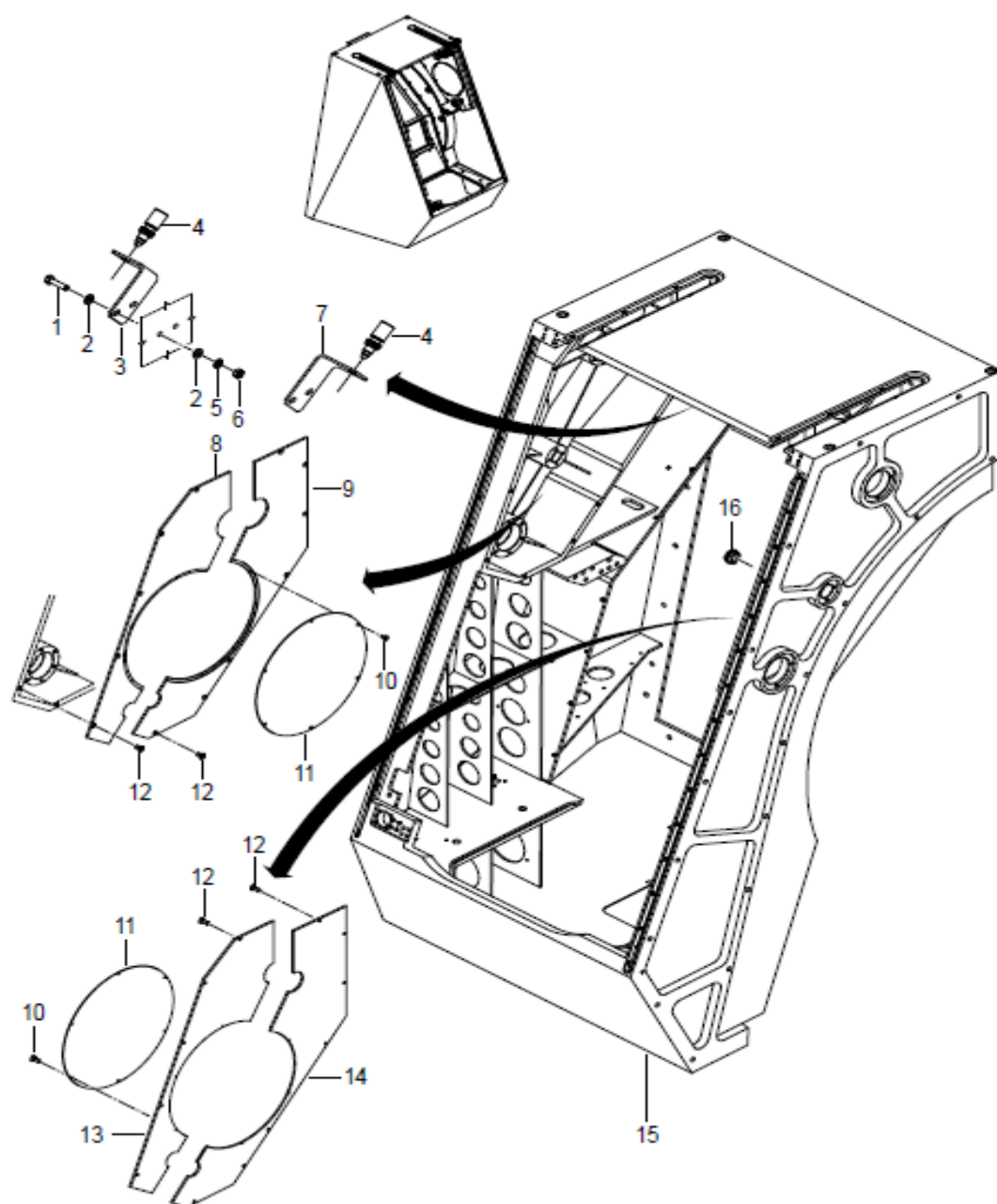
- Scope of Work

- a. Procurement of Raw Material
- b. Cutting, Bending, welding etc as per Drawing as applicable.
- c. Oxide and chromate base amorphous coating on aluminium alloy as per drawing as applicable.
- d. Assembly

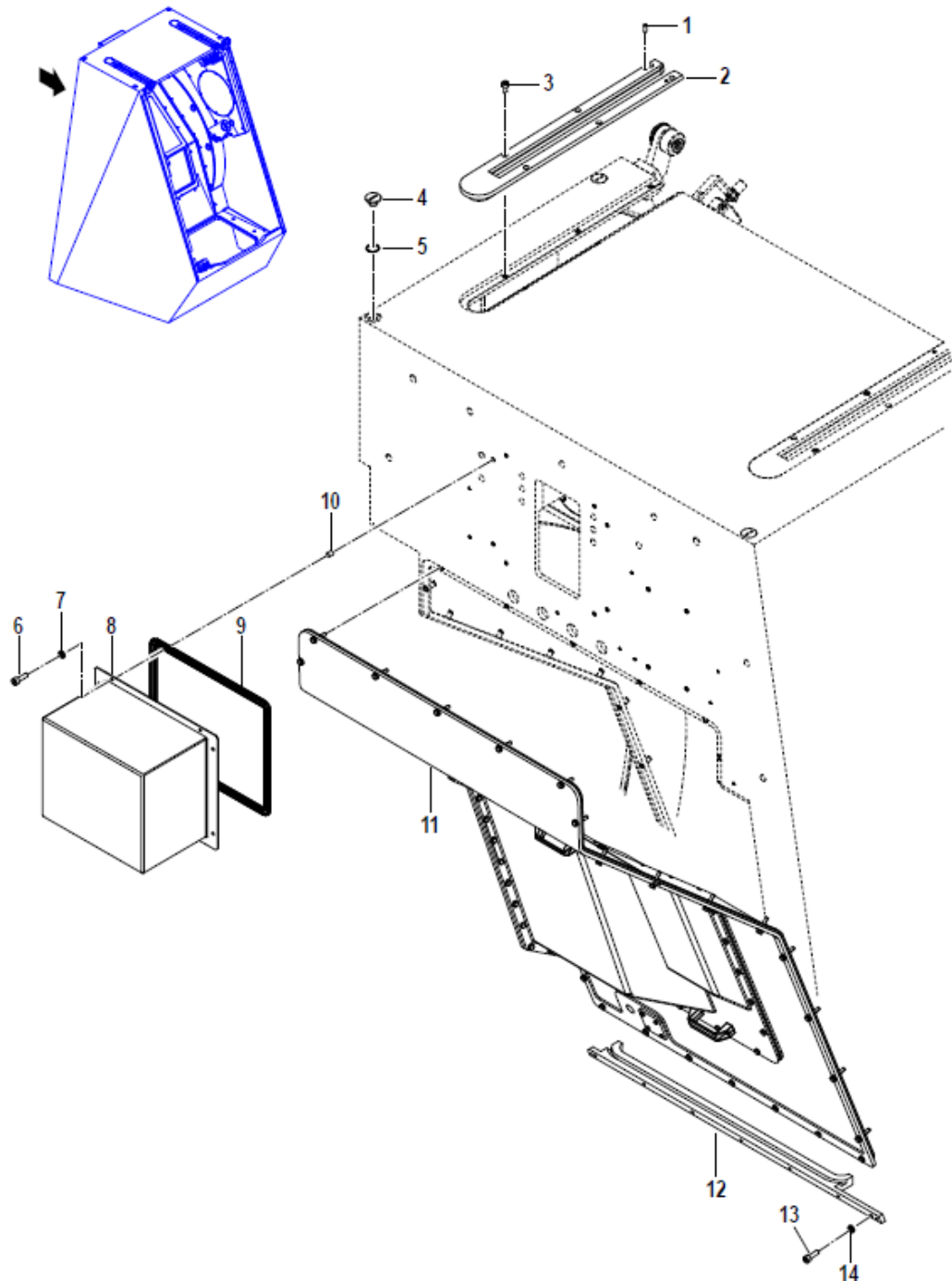
- Essential Inhouse Machining Facilities required for working on aluminium alloy sheet/plate

- a. Cutting M/c (Laser/Waterjet)
- b. Bending M/c
- c. Welding Facilities

**Exploded View of Structure Assembly (Heli-coil pre-assembly) of
KIT DAVIDE INSTALLATION (COVER)**



**Exploded View of Back Cover Assembly (Heli-coil pre-assembly) of KIT
DAVIDE INSTALLATION (COVER)**



LIST OF DOCUMENTS

1. Organisational Information – Name and Correspondence Address of the Firm/ Company to be registered.
2. Registration particulars – If registered with any of the BHEL Units
3. Manufacturing Facilities:
 - a. List of Manufacturing Facilities/Equipment's
 - b. In case of Back Cover Assembly (Heli-coil pre-assembly), List of Coating facilities. If In-house coating facilities not available, inform source of the same.
4. Inspection and Testing facilities – List of Inspection & Testing facilities / Equipment available.
5. Details of similar products
6. Prior experience of fabrication/machining for aluminium alloy sheet/plate components or similar components.
7. Unpriced PO copies executed for aluminium alloy sheet/plate components or similar components
8. Standard Quality Plan
9. Quality Management System - Whether Supplier is ISO 9001, ISO 14000, OHSAS – 18000 Certified
10. List of Enclosures (Brochures, Catalogues etc.)
11. Financial Information