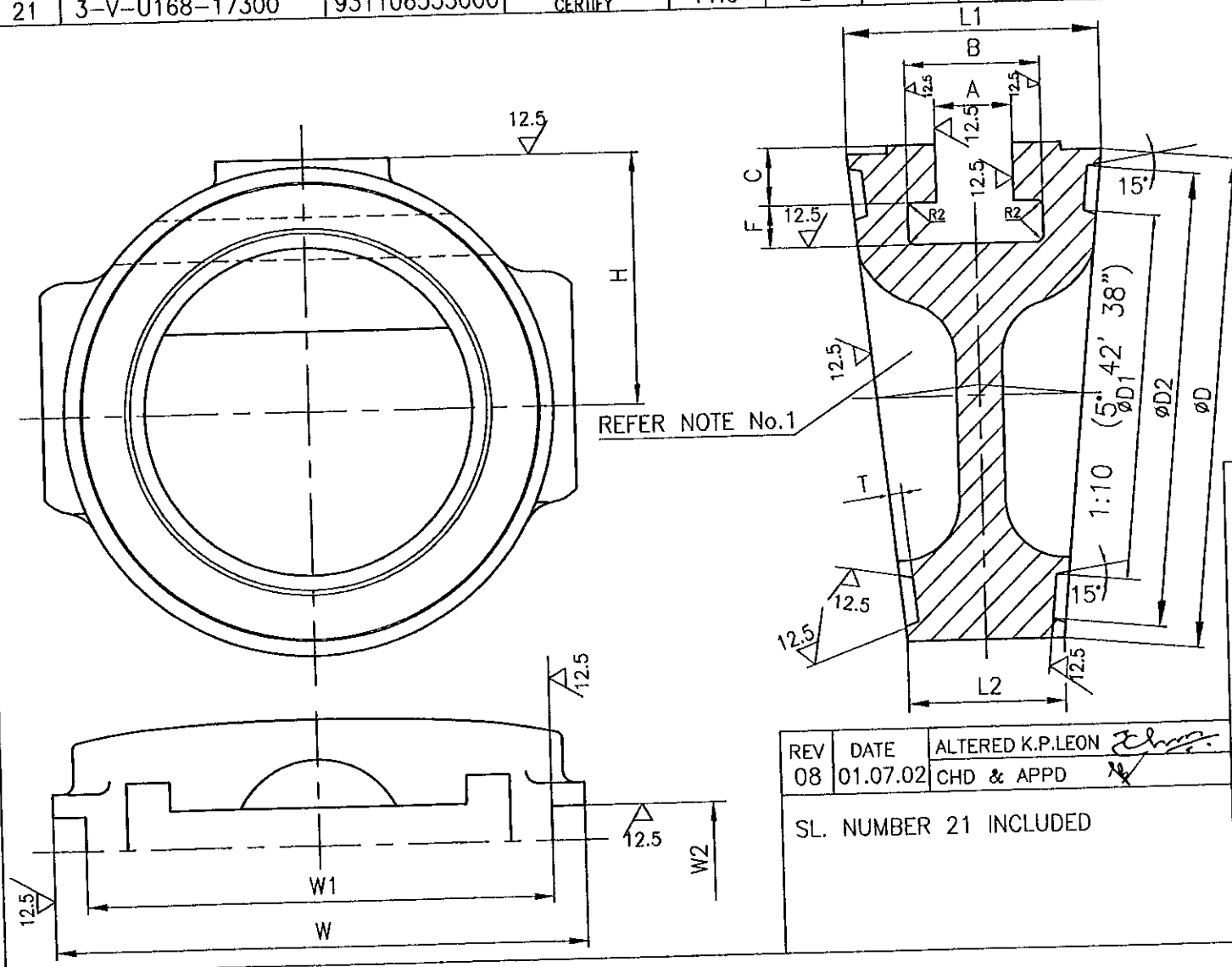


0000-17300-0000-17300
DRAWING NO.

SL.NO.	DRG.NO.	COMP.CODE	MATL.SPECN.	DIMENSIONS														NET WT (kg)	VALVE TYPE
				A	B	C	F	W	W1	W2	L1	L2	H	ØD	ØD1	ØD2	T		
01	3-V-N025-17300	931026285000	A216 WCB NORMALISED (CERTIFY)	11.5	27	11	15	112	90	12	51.12	32.02	50	96	71	93	3.5	1.95	3"-C150 WCB GV
02	3-V-N033-17300	931026305000		20	35	11	15	137	121	18	63.59	38.32	65.5	127	90	125	3.5	4.43	4"-C150 WCB GV
03	3-V-N001-17300	931021065000		22	44	14	18	190	173	16	72.57	36.75	91	180	141	175	3.5	8.00	6"-C150 WCB GV
04	3-V-N057-17300	931027715000		32	54	23	21	299	277	22	103.38	47.06	144	283	247	277	3.5	19.00	10"-C150 WCB GV
05	3-V-N009-17300/01	931025405000		32	54	19	17	244	222	18	81.87	35.07	120	234	192	228	3.5	12.80	8"-C150 WCB GV
06	3-V-N041-17300/01	931026295000		32	54	21	24	356	332	22	112.64	44.98	173	340	295	333	3.5	44.80	12"-C150 WCB GV
07	3-V-N305-17300	931060345000	A217 WC6 N & T (CERTIFY)	32	54	23	21	299	277	22	103.38	47.06	144	283	247	277	3.5	19.00	10"-C150 WC6 GV
08	3-V-N306-17300	931061075000	A217 WC9 N & T (CERTIFY)	22	44	14	18	190	173	16	72.57	36.75	91	180	141	175	3.5	8.00	6"-C150 WC9 GV
09	3-V-N307-17300	931060355000		32	54	23	21	299	277	22	103.38	47.06	144	283	247	277	3.5	19.00	10"-C150 WC9 GV
10	3-V-N308-17300	931061085000	A217-WC6,NT CERTIFY	22	44	14	18	190	173	16	72.57	36.75	91	180	141	175	3.5	8.00	6"-C150 WC9 GV
11	3-V-N291-17300	931070355000		11.5	27	11	15	112	90	12	51.12	32.02	50	96	71	93	3.5	1.95	3"-C150 WC9 GV
12	3-V-N292-17300	931070365000	A217-WC9,NT CERTIFY	11.5	27	11	15	112	90	12	51.12	32.02	50	96	71	93	3.5	1.95	3"-C150 CF8 STE
13	3-V-K757-17300	931075655000	A351-CF8,SH CERTIFY	11.5	27	11	15	112	90	12	51.12	32.02	50	96	71	93	3.5	4.43	4"-C150 CF8M GV
14	3-V-K941-17300	931090715000	A351-CF8M,SH CERTIFY	20	35	11	15	137	121	18	63.59	38.32	65.5	127	90	125	3.5	12.80	8"-C150 WC9 GV
15	3-V-N762-17300	931090695000	A217-WC9,NT CERTIFY	32	46	19	17	244	222	18	81.87	35.07	120	234	192	228	3.5	8.00	6"-C150 WCC GV
16	3-V-N801-17300	931093065000	A216-WCC-NR CERTIFY	22	44	14	18	190	173	16	72.57	36.75	91	180	141	175	3.5	12.80	8"-C150 WCC GV
17	3-V-N813-17300	931093645000	A216 WCC NORMALISED (CERTIFY)	32	46	19	17	244	222	18	81.87	35.07	120	234	192	228	3.5	19.00	10"-C150 WCC GV
18	3-V-N814-17300	931093695000		32	54	23	21	299	277	22	103.38	47.06	144	283	247	277	3.5	44.80	12"-C150 WCC GV
19	3-V-N815-17300	931093865000		32	54	21	24	356	332	22	112.64	44.98	173	340	295	333	3.5	19.00	10"-C150 WCB GV
20	3-V-U025-17300	931099015000	A216-WCB-NR CERTIFY	32	54	23	21	299	277	22	103.38	47.06	144	283	247	277	3.5	1.95	3"-C150 CF8M STE
21	3-V-U168-17300	931106535000	A351-CF8M,SH CERTIFY	11.5	27	11	15	112	90	12	51.12	32.02	50	96	71	93	3.5	1.95	3"-C150 CF8M STE



NOTE:

FOR 3"-C150 THE AREA SHOWN IS FULLY SOLID

NO OFF	DESCRIPTION	MATL CODE	MATL SPECN	HEAT TREATMENT	SCRAP SORT	NET WT (kg)	GROSS WT (kg)	DRAWING No	ITEM No
	TYPE OF PRODUCT OR NAME OF CUSTOMER/PROJECT								
	BHARAT HEAVY ELECTRICALS LTD. UNIT: HIGH PRESSURE BOILER PLANT. TIRUCHIRAPALLI 620014.								
365-121	DEPT VL	SCALE NTS	WEIGHT (KG). REFER TABLE	REFERENCE INFORMATION CAD:C317300	NO. OF ITEMS				
	CODE								
	TITLE WEDGE (ROUGH)								
	CARD CODE U 01								
	DRAWING NO. 3-V-0000-17300								
	REV 08								