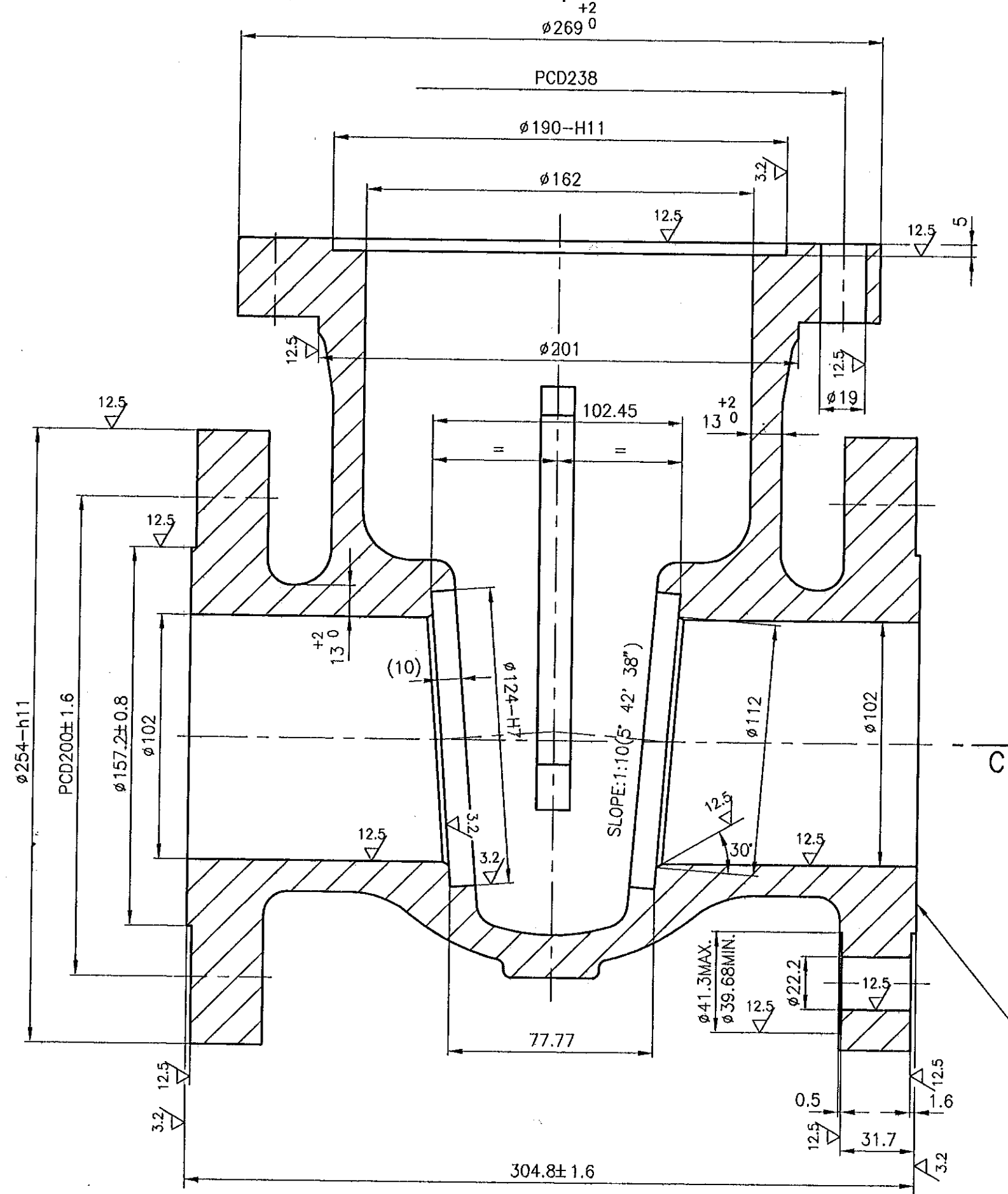
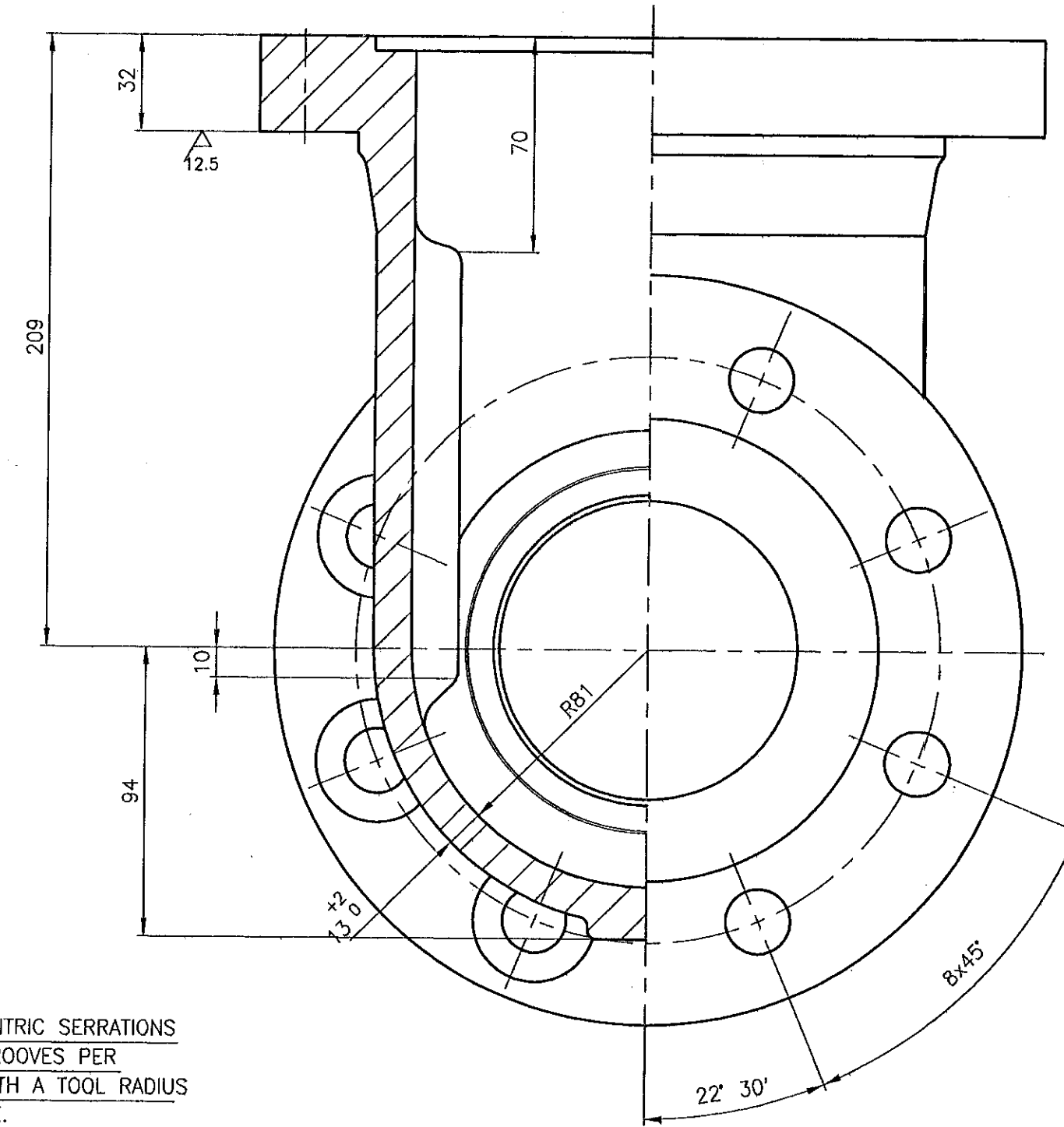


SECTION-AA



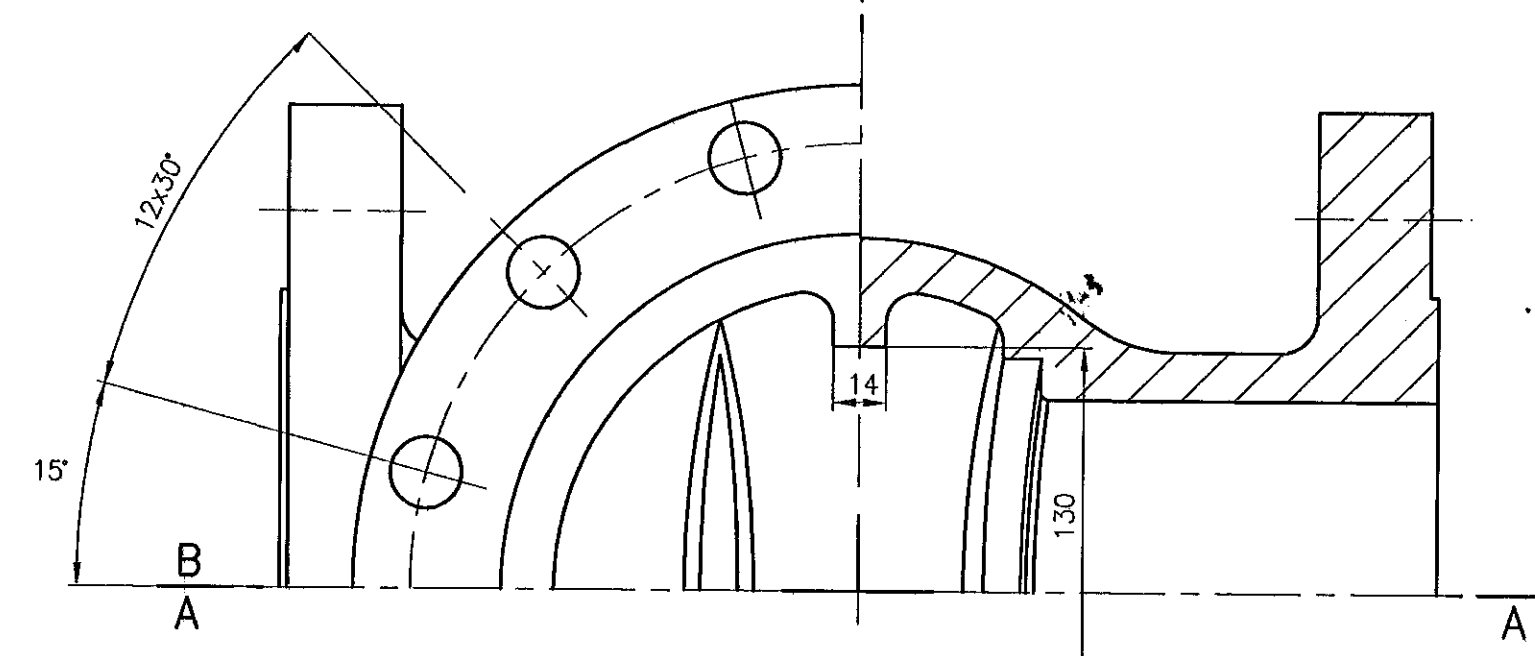
SPIRAL OR CONCENTRIC SERRATIONS
WITH 45 TO 55 GROOVES PER
INCH (25.4mm) WITH A TOOL RADIUS
OF 1.5mm APPROX.

SECTION-BB



Ø124-H7	+0.040
Ø190-H11	+0.290
Ø254-h11	-0.320

SECTION-CC



REV	DATE	ALTD:- T.R.L.	REV	DATE	ALTERED T.R.L.
04	01.09.99	CHD & APPD	03	10.04.98	CHD & APPD
SERRATION NOTE MODIFIED.			LINE FLANGE FINISH REVISED FROM 12.5 TO 3.2		
REFER DCN. CS:1034			REFER DCN. CS:0864		

CAUTION: The information on this document is the property of BHARAT HEAVY ELECTRICALS LTD. It must not be used directly or indirectly in any way detrimental to the interest of the company.

CASTING DRG.No. 2.V.N097.03439R/01		92 027 066	A216 WCB (ATTEST)	NR	10	-	-	-	-
No OFF	DESCRIPTION	MATL CODE	MATL SPECN	HEAT TREATMENT	SCRAP SORT	NET WT (kg)	GROSS WT (kg)	DRAWING No.	ITEM No
TYPE OF PRODUCT OR NAME OF CUSTOMER/PROJECT DRG. RETRACED WITH REV.03 ON 10.04.98(REFER DCN.CS:0227)									
BHARAT HEAVY ELECTRICALS LTD., UNIT: HIGH PRESSURE BOILER PLANT. TIRUCHIRAPALLI-620014.				DRN T.R.RAMAMURHY	SIGN T.R.R.	DATE 10.04.98	NO.OF VAR.		
365-120				CHD N.DHANAPAL	APPD K.S.RAMAN	10.04.98			
DEPT V L	SCALE NTS.	WEIGHT (KG). 57.35	REFERENCE INFORMATION CAD:C203439 COMP. CODE:93 103 281 0000						
CODE 320	TITLE BODY (100-C300)	CARD CODE U 01	DRAWING NO. 2-V-N097-03439/04						

