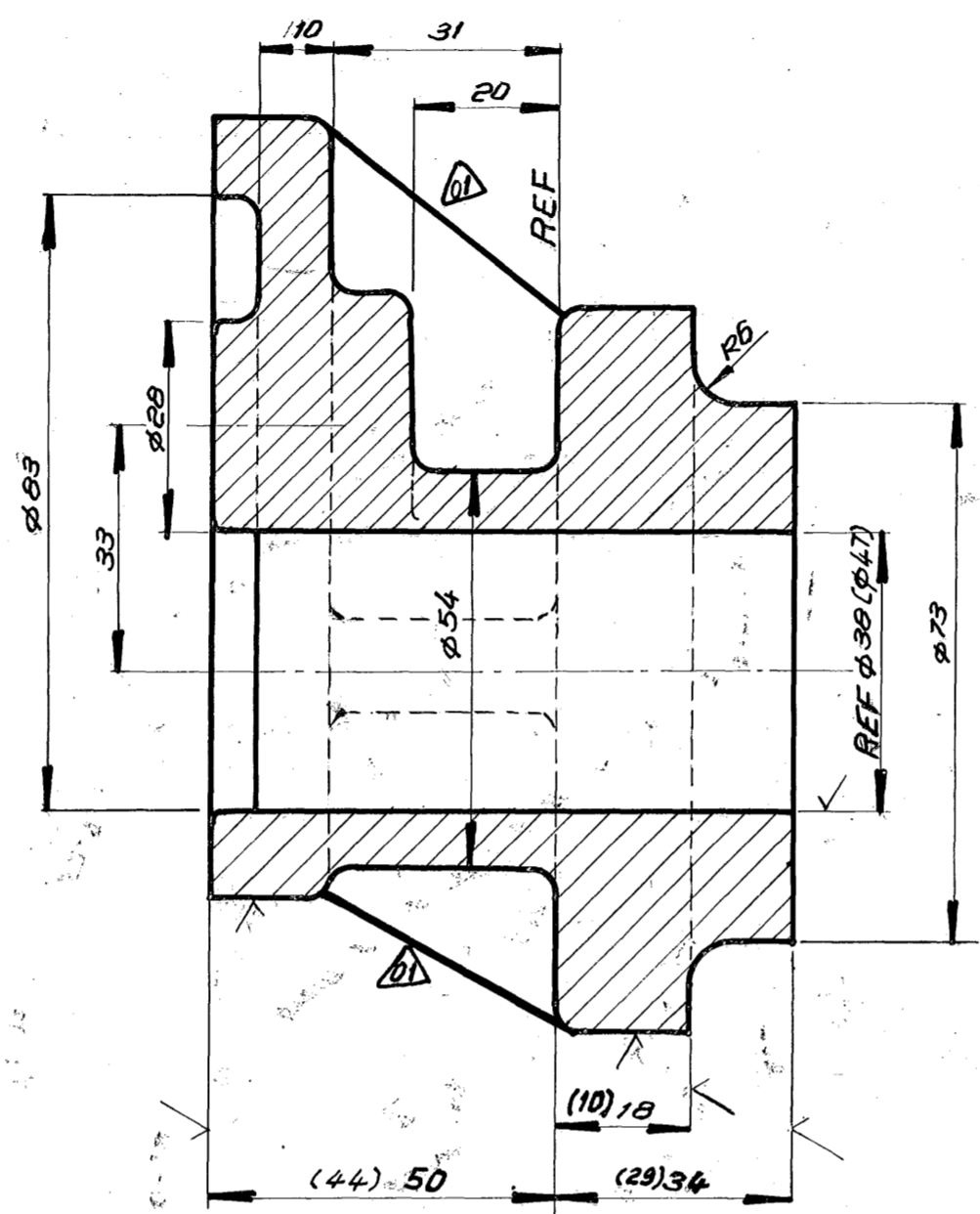
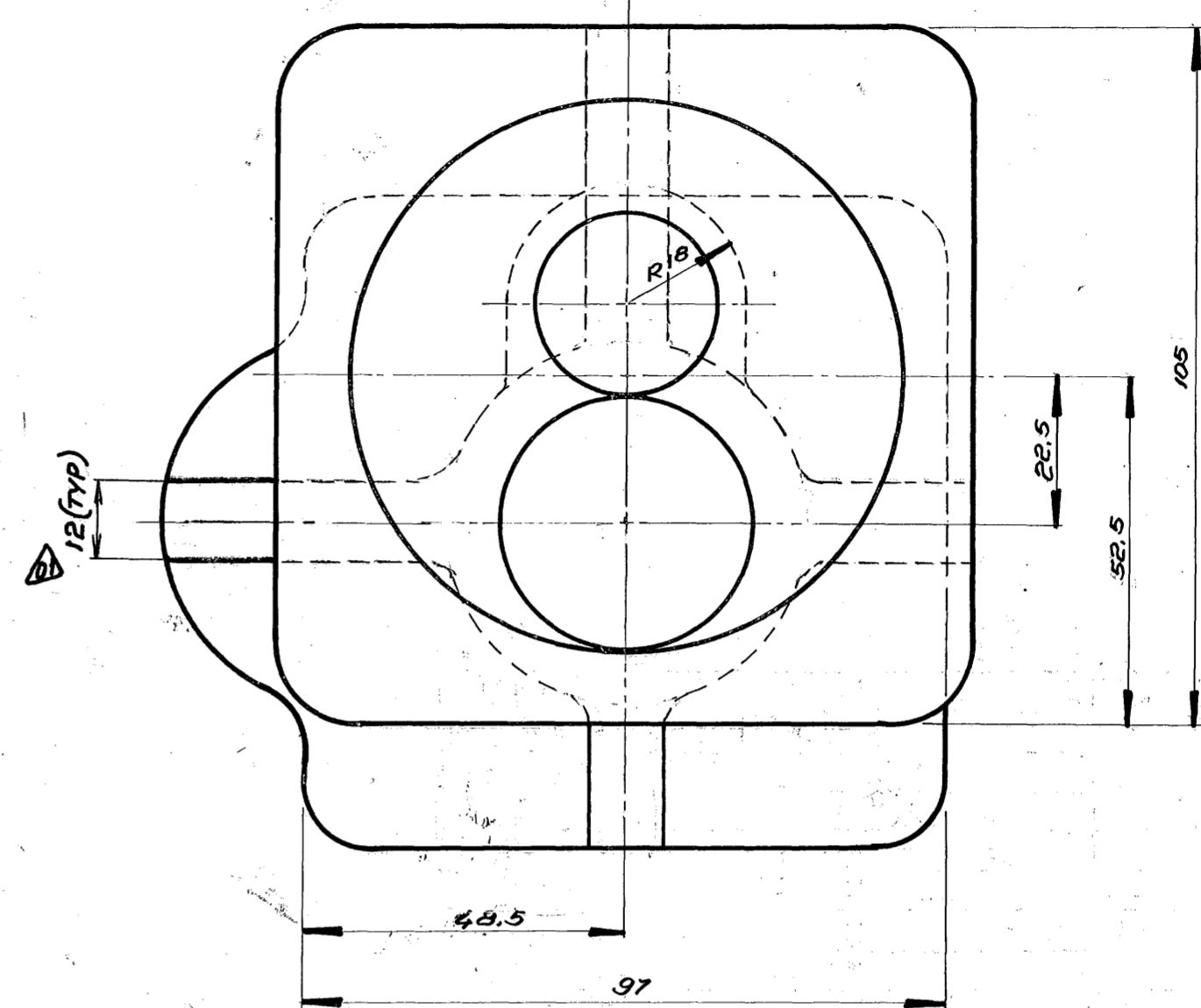


FIRST POSITION FOR MARKING



SECOND POSITION FOR MARKING



- NOTE:-**
1. INDICATES THE SURFACES TO BE MACHINED FURTHER.
 2. NECESSARY MACHINING ALLOWANCES ARE ALREADY INCLUDED IN THE INDICATED DIMENSIONS AND THE FINISH MACHINED DIMENSIONS ARE GIVEN IN BRACKETS FOR INFORMATION ONLY.
 3. DIMENSIONAL DEVIATIONS FOR CASTING TO BE STRICTLY AS PER THE QUALITY DOCUMENTS FOR STEEL CASTING
 4. UNSPECIFIED CASTING RADII TO BE 3MM.
 5. MATERIAL STANDARD FOR THE CASTING TO BE ADHERED TO IS IS L M-9WP. (SOLUTION TREATED & PRECIPITATION HARDENED). FOR MACHINE DRAWING REFER DRG. NO. 2.20.201.00061

92/005/791															125																																																																						
ALU. LM9 WP																																																																																					
15	16	17	18	19	20	21	22	23	24	25	26	27	28	29	30	31	32	33	34	35	36	37	38	39	40	41	42	43	44	45	46	47	48	49	50	51	52	53	54	55	56	57	58	59	60	61	62	63	64	65	66	67	68	69	70	71	72	73	74	75	76	77	78	79	80	81	82	83	84	85	86	87	88	89	90	91	92	93	94	95	96	97	98	99	100
REF. DRG./BPS No.															MATERIAL CODE					COMP. GROUP					UNIT wt. (kg)					DESCRIPTION/REMARKS																																																							
															MATERIAL SPECN.					No. OFF																																																																	

CARD TYPE 1

BILL OF MATERIAL No.

BHARAT HEAVY ELECTRICALS LTD.,
BOILER PLANT UNIT, TIRUCHIRAPALLI-620014.

REV	DATE	ALTERED	BY
02	12.04.0	CHKD	...
NOTE ALTERED. PROCESS REMOVED			
DCN NO: 9B1297			
01	17-6-78	CHECKED	...
ZONE	12mm STIFFENER ON FOUR SIDES ADDED FOR REIN-FORCEMENT		

FIRST ANGLE	SCALE	DRAWN	TOTAL wt. (kg)
	1:1	G. S. Shankar	1.25
CHECKED	DATE	APPROVED	TYPE
	12.2.78		
ALL DIMENSIONS IN MILLIMETRES		DATE	NEW/OLD DRG. No.

CAUTION

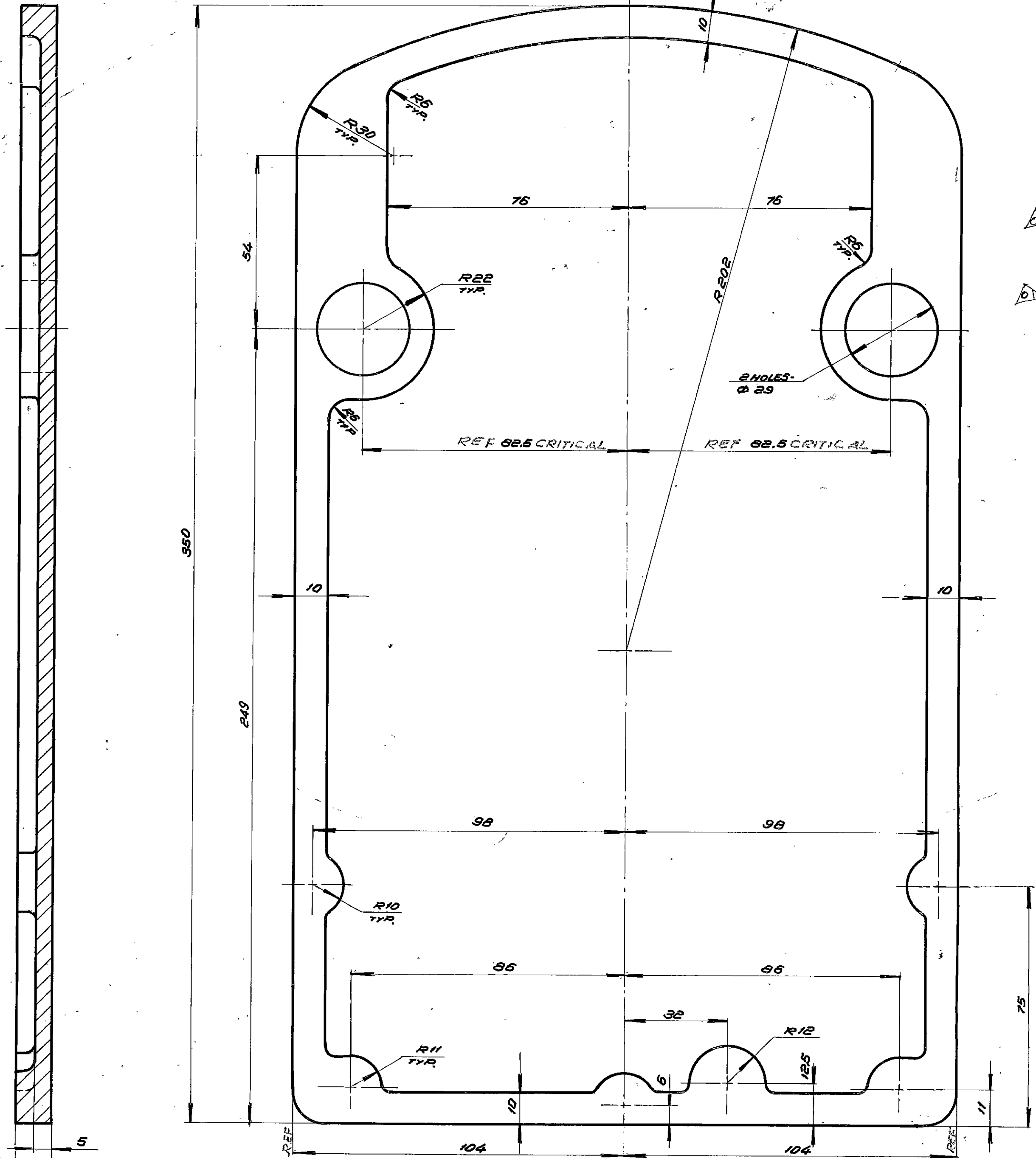
THE INFORMATION CONTAINED IN THIS DRAWING IS THE PROPERTY OF BHARAT HEAVY ELECTRICALS LIMITED, BOILER PLANT UNIT, TIRUCHIRAPALLI-620014, AND SHALL NOT BE USED WITHOUT THEIR EXPRESS WRITTEN PERMISSION IN ANY FORM OR PART THEREOF FOR ANY OTHER PURPOSE THAN FOR WHICH IT IS SENT TO YOU.

SWITCH MOUNT CONNECTOR CASTING

DRAWING No. **2.20.201.00116**

REVISION **02**

CARD CODE **U01**



- NOTE:-**
1. \surd INDICATES THE SURFACES TO BE MACHINED FURTHER.
 2. NECESSARY MACHINING ALLOWANCES ARE ALREADY INCLUDED IN THE INDICATED DIMENSIONS AND THE FINISH MACHINED DIMENSIONS ARE GIVEN IN BRACKETS FOR INFORMATION ONLY.
 3. DIMENSIONAL DEVIATIONS FOR CASTING TO BE STRICTLY AS PER THE QUALITY DOCUMENTS FOR STEEL CASTING.
 4. UNSPECIFIED CASTING RADII TO BE 3MM. MAX.
 5. MATERIAL STANDARD FOR THE CASTING TO BE ADHERED TO I.M. 6.
 6. WARPING TO BE RESTRICTED TO 0.5MM. FOR MACHINE DRAWING REFER DRG. NO. 2.20.201.00060.

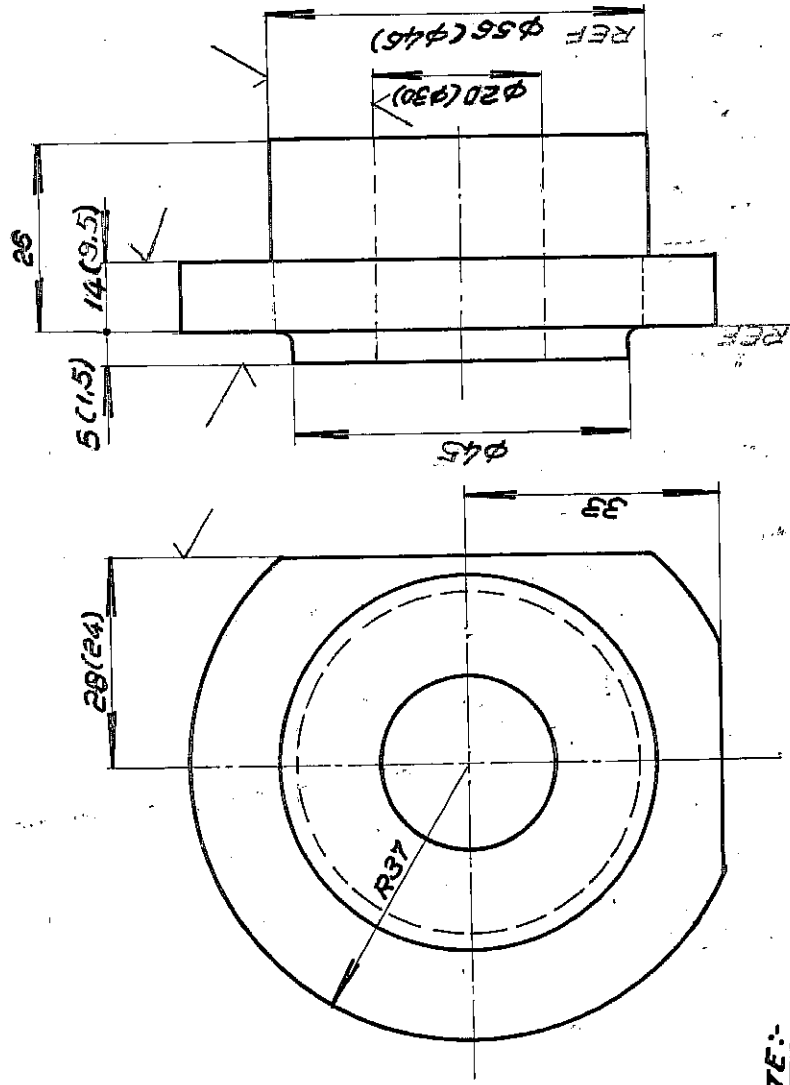
92/005/792																	
ALU. IM-6																	
15	17	20	21	REF. DRG./BPS No.				34	MATERIAL CODE		56	57	63	68	75	76	20
STYLE NO.	ITEM NO.	BPS						RVN			A	COMP.	UNIT Wt. (Kg)	48	75	76	20
								32	MATERIAL SPECN.		C	GROUP	70	No. OFF			
CARD TYPE 1																	
CARD TYPE 2																	

BILL OF MATERIAL No.														
----------------------	--	--	--	--	--	--	--	--	--	--	--	--	--	--

BHARAT HEAVY ELECTRICALS LTD.,
BOILER PLANT UNIT, TIRUCHIRAPALLI-620014.

FIRST ANGLE	SCALE	DRAWN	OF. RAKSHMIKANNAN	TOTAL WT. (K.G)	1.20
	1:1	CHECKED	AD Swarth	TYPE	
ALL DIMENSIONS IN MILLIMETRES		APPROVED	N. Ramesh	DATE	22nd MARCH, 1975
		NEW/OLD DRG. No.			

CAUTION		GEAR BOX COVER CASTING.	
THE INFORMATION CONTAINED IN THIS DRAWING IS THE PROPERTY OF BHARAT HEAVY ELECTRICALS LIMITED. BOILER PLANT UNIT, TIRUCHY-620014. AND SHALL NOT BE USED WITHOUT THEIR EXPRESS WRITTEN PERMISSION IN ANY FORM OR PART THEREOF FOR ANY OTHER PURPOSE THAN FOR WHICH IT IS SENT TO YOU.			
01	DATE	ALTERED	
ZONE	13.140	CHECKED BY	
NOTE ALTERED.			
DCN NO. SB 1297			
CARD CODE	2.20.201.00124	REVISION	01
U01			



NOTE:-

1. ✓ INDICATES THE SURFACES TO BE MACHINED FURTHER.
2. NECESSARY MACHINING ALLOWANCES ARE ALREADY INCLUDED IN THE INDICATED DIMENSIONS AND THE FINISH MACHINED DIMENSIONS ARE GIVEN IN BRACKETS FOR INFORMATION ONLY
3. DIMENSIONAL DEVIATIONS FOR CASTING TO BE STRICTLY AS PER THE QUALITY DOCUMENTS FOR STEEL CASTING
4. UNSPECIFIED CASTING RADIUS TO BE 1.5 MM MAX.
5. MATERIAL STANDARD FOR THE CASTING TO BE ADHERED TO IS L M 1-9 WP. [SOLUTION HEAT TREATED & PRECIPITATION HARDENED]
6. FOR MACHINE DRAWING REFER DRAWING NO. 4.20.201-00200.

WILCOX LOWE ON
ROLL 00323 FRAME 252

ITEM No.	BPS No.	REF. DRG./BPS No.	RVN	MATERIAL CODE	56 57	COMP. GROUP	UNIT wt. (kg)	68	75	76	70	DESCRIPTION/REMARKS
STYLE No.			32 STL	44 MATERIAL SPECN.	A C		70	No. OFF				
15	17	20	21	92/005/790			63					
				L.M.-9 WP								
CARD TYPE 1												
CARD TYPE 2												

BILL OF MATERIAL NO.
V. L. Candhan.

DRAWN: *V. L. Candhan.*
CHECKED: *...*
APPROVED: *M. Jayaraman*
DATE: _____

SCALE:

FIRST ANGLE:

TOTAL wt. (kg): 0.2
TYPE: _____
NEW/OLD DRG. No.: _____

CAUTION

THE INFORMATION CONTAINED IN THIS DRAWING IS THE PROPERTY OF BHARAT HEAVY ELECTRICALS LIMITED, BOILER PLANT UNIT, TIRUCHY-620 014, AND SHALL NOT BE USED WITHOUT THEIR EXPRESS WRITTEN PERMISSION IN ANY FORM OR PART THEREOF FOR ANY OTHER PURPOSE THAN FOR WHICH IT IS SENT TO YOU.

05-249



BEARING CAP CASTING

CARD CODE: U01
DRAWING No.: 4-20-201-00736
REVISION: 01

REV DATE: _____
CORPORATE DRG ID: _____
NOTE ALTERED PROCESS
REMOVED
DCN NO SB 1297