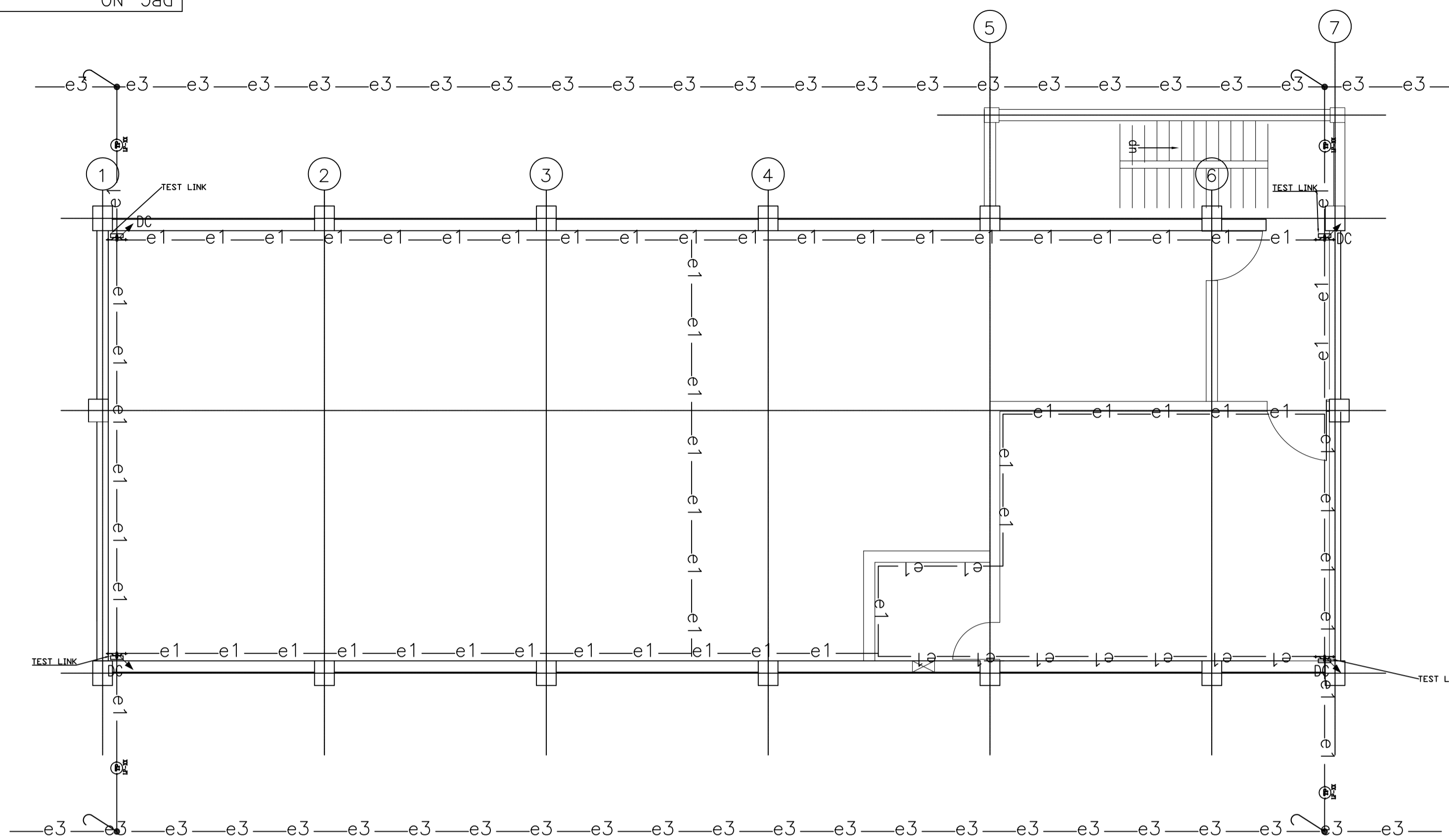


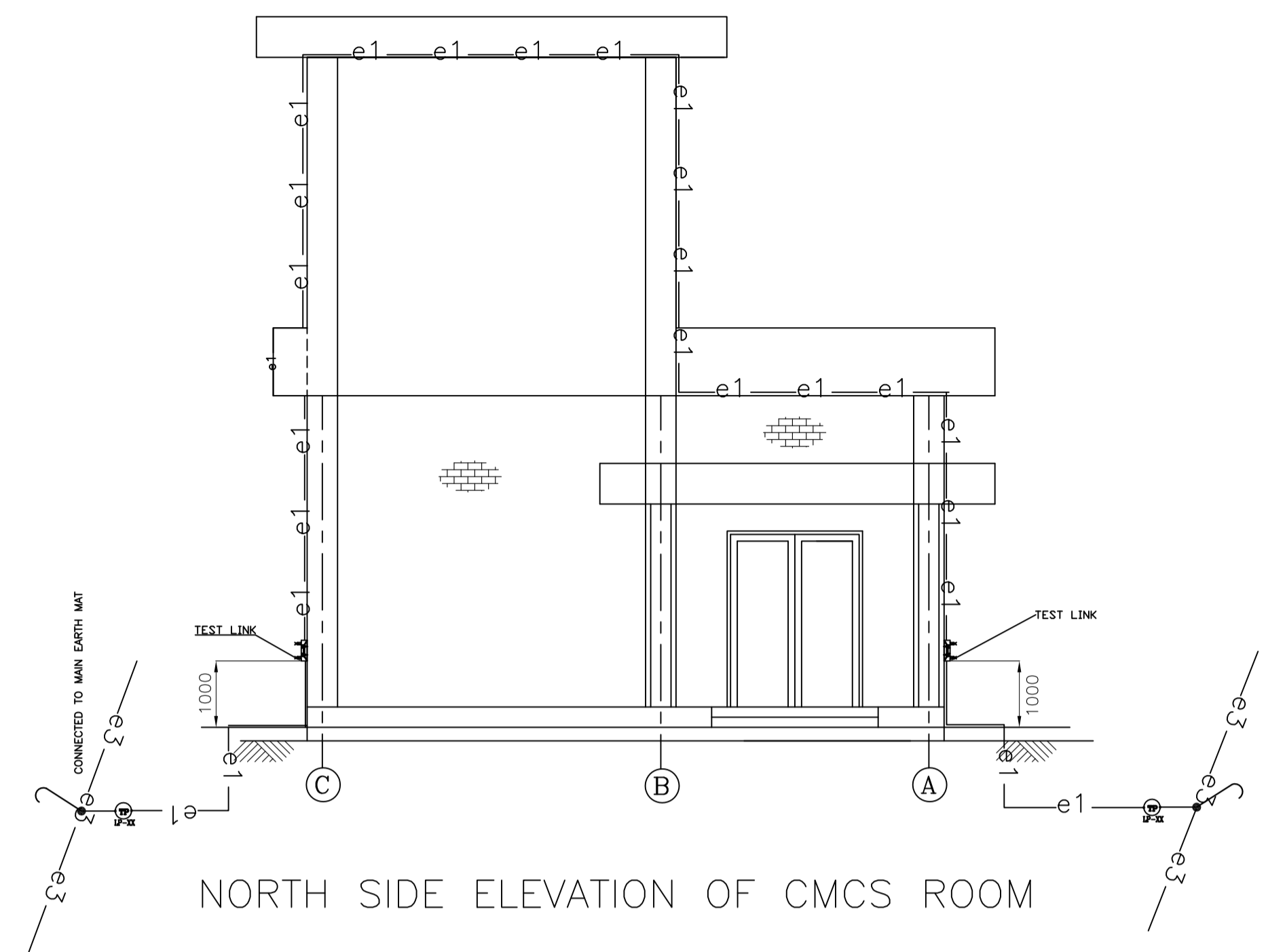




DRG. NO. PY-LL-1-M086-2001-01  
SHT. 01 OF 02



CMCS ROOM ROOF PLAN



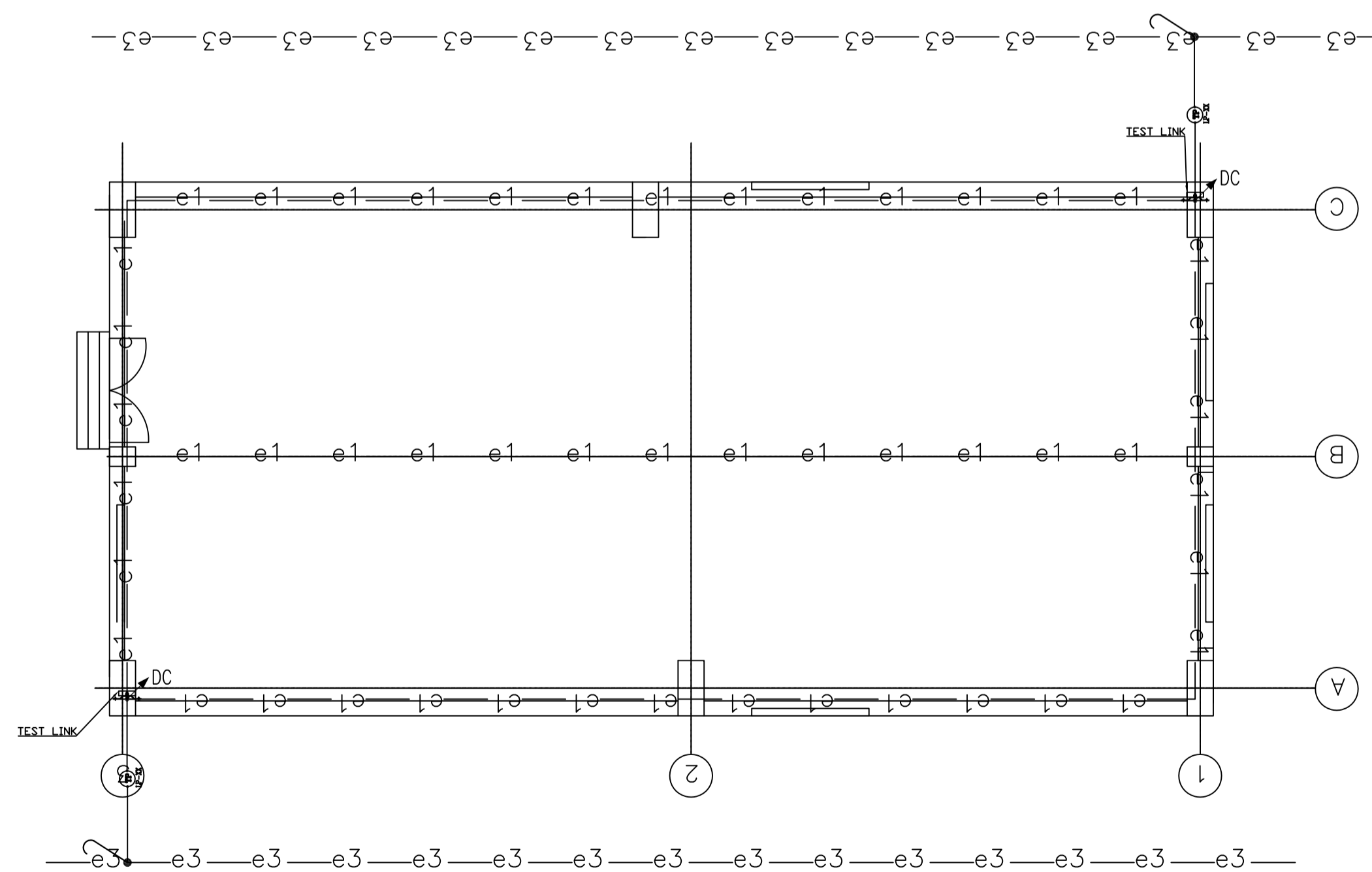
NORTH SIDE ELEVATION OF CMCS ROOM

LEGEND:

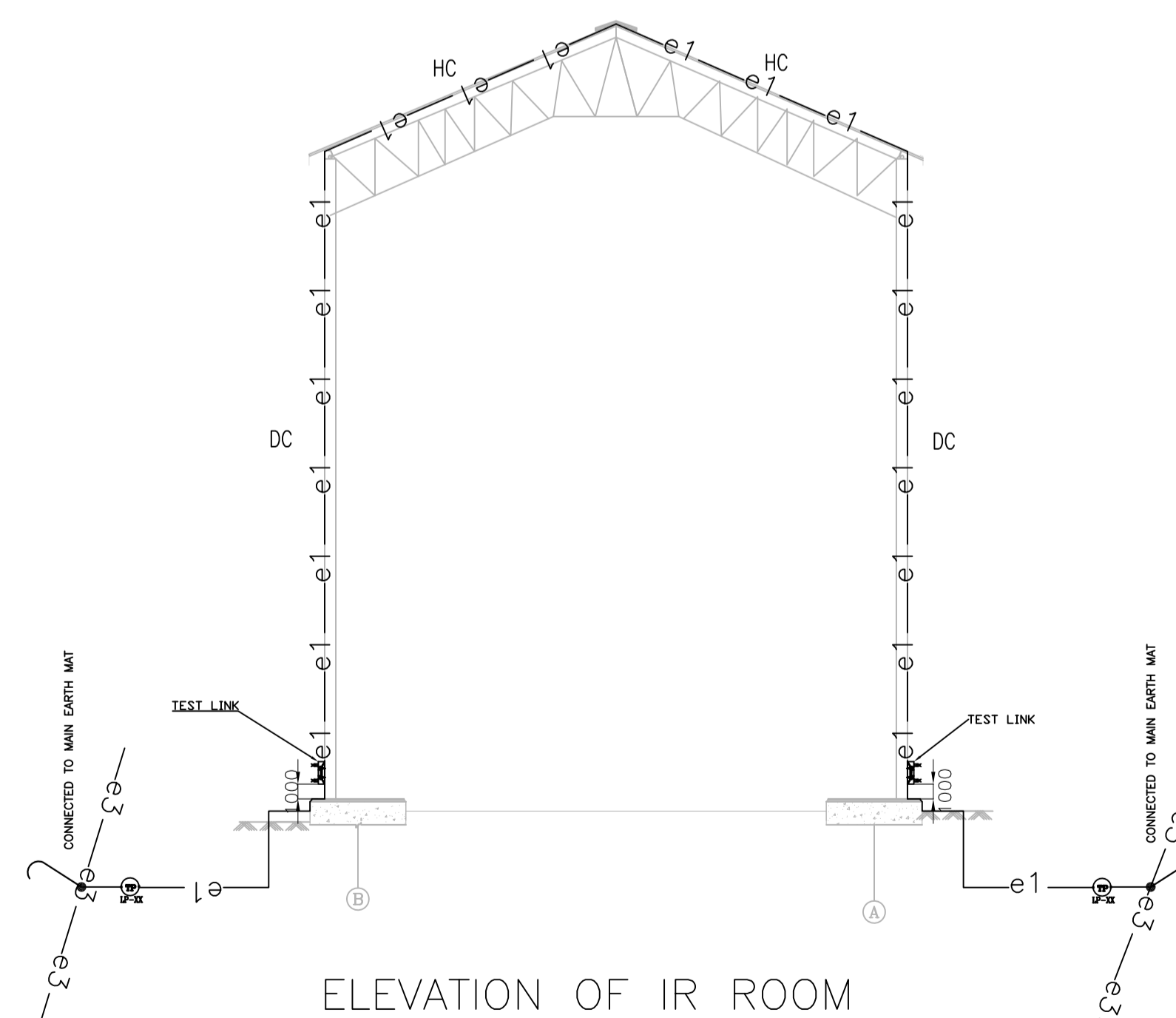
SYMBOL	DESCRIPTION	QTY.
-----	HORIZONTAL/VERTICAL/DOWN CONDUCTOR/CONDUCTOR FROM TEST LINK TO ELECTRODE (35x6mm GI STRIP)	800 M (APPROX.)
-----	CONDUCTOR FROM ELECTRODE TO MAIN EARTH MAT (25x6mm GI STRIP)	125 M (APPROX.)
⊙ TP LP-XX	40mm DIA, 3000mm LONG GI PIPE ELECTRODE IN TREATED EARTH PIT (ELECTRICAL) FOR LIGHTNING PROTECTION	24 Nos.
⊙	TEST LINK	24 Nos.
HC	HORIZONTAL CONDUCTOR - 35x6mm GI STRIP	-
VC	VERTICAL CONDUCTOR - 35x6mm GI STRIP	-
DC	DOWN CONDUCTOR - 35x6mm GI STRIP	-

NOTES:

- LIGHTNING PROTECTION INSTALLATION SHALL CONFORM TO IS:2309.
- AN INDEPENDENT EARTH GRID SHALL BE PROVIDED FOR LIGHTNING PROTECTION AND THIS SHALL BE BONDED AT LEAST AT TWO POINTS WITH MAIN EARTH GRID BELOW GROUND.
- LIGHTNING DOWN CONDUCTOR (WHEREVER APPLICABLE) SHALL BE BROUGHT TO EARTH ELECTRODE IN SHORTEST STRAIGHT PATH AS FEASIBLE TO MINIMISE SURGE IMPEDANCE.
- THE LIGHTNING PROTECTION EARTH CONNECTION TO EARTH ELECTRODE SHALL BE LAID AT THE DEPTH OF 600mm BELOW FGL.
- THE LOCATION OF EARTH ELECTRODE/PITS ARE INDICATIVE ONLY, ACTUAL LOCATION SHALL BE DECIDED AT SITE WITHOUT FOULING TO OTHER SERVICES.
- JOINTS SHALL BE KEPT TO MINIMUM OF WELDED TYPE & SUITABLY PROTECTED AGAINST CORROSION.
- RESISTANCE TO EARTH OF INDIVIDUAL GROUND RODS SHOULD NOT EXCEED 5 OHM.
- HORIZONTAL MESH SPACE SIZE CONSIDERED IS 10x20 M (MAX) AS PER IS 2309



INVERTER ROOM ROOF PLAN



ELEVATION OF IR ROOM

TENDER PURPOSE ONLY

THE INFORMATION ON THIS DOCUMENT IS THE PROPERTY OF BHARAT HEAVY ELECTRICALS LIMITED. IT MUST NOT BE USED DIRECTLY OR INDIRECTLY IN ANY WAY DETRIMENTAL TO THE INTEREST OF THE COMPANY

GENERAL DIMENSIONAL LIMITS, FITS & TOLERANCES AS PER HY0230261

REV.	DATE	ALTERED CHD/APPD	REV.	DATE	ALTERED CHD/APPD	REV.	DATE	ALTERED CHD/APPD	REV.	DATE	ALTERED CHD/APPD	REV.	DATE	ALTERED CHD/APPD	REV.	DATE	ALTERED CHD/APPD	REV.	DATE	ALTERED CHD/APPD	

PROJECT : 50MWp SOLAR POWER PLANT (P4 BLOCK)  
 CUSTOMER : NTPC - MANDSAUR MP

**BHEL** BHARAT HEAVY ELECTRICALS LTD.  
 UNIT : HYDERABAD

DRN.	NAME	SIGN.	DATE	NO. OF VAR.
CHD.	SRS/HPG		24.06.16	N.A.
APPD.	AM		24.06.16	N.A.
	JKP		24.06.16	N.A.

DEPT. PED. CODE 450  
 UNTOL. DIMS. GR. g/m/f  
 SCALE: [Symbol]  
 WEIGHT (KG) N.A.  
 REF. TO ASSY. DRG. N.A.  
 ITEM NO. N.A.  
 NO. OF ITEMS N.A.

DRAWING NO. PY-LL-1-M086-2001-01  
 SHT. No 03 NO. OF SHT. 03