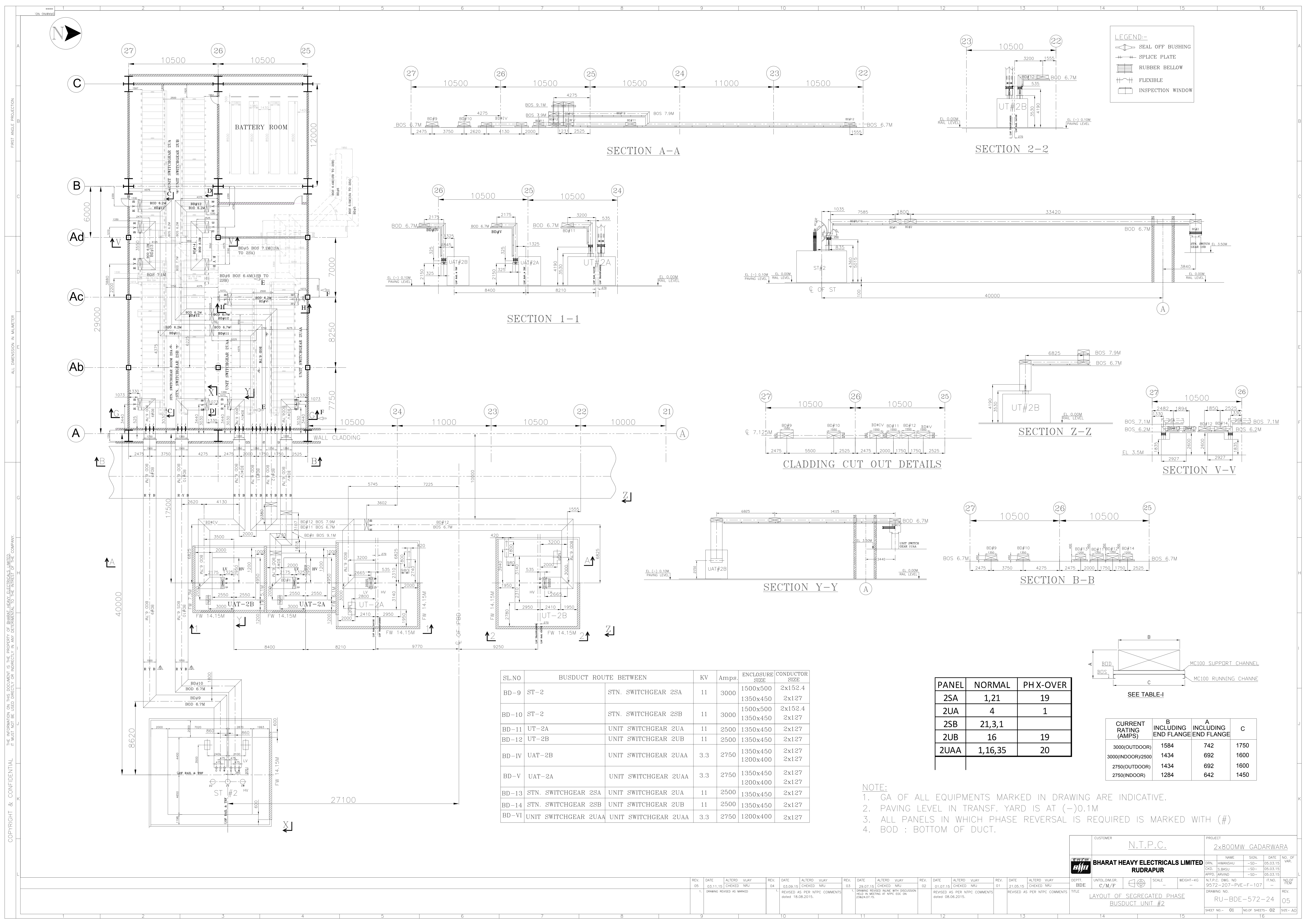


PROJECT	2X800 MW GADARWARA STPP
PACKAGE	BUS DUCT
SUBJECT	REPLY SHEET FOR REAPPROVAL OF LAYOUT OF SEGREGATED PHASE BUSDUCT FOR UNIT-2
BHEL DOC NO	RU-BDE-572-24, R05
NTPC DOC NO	9572-207-PVE-F-107, R05
REFERENCE	Approved in CAT-1 vide letter no CC:PE207:18364 dated 24.09.15.

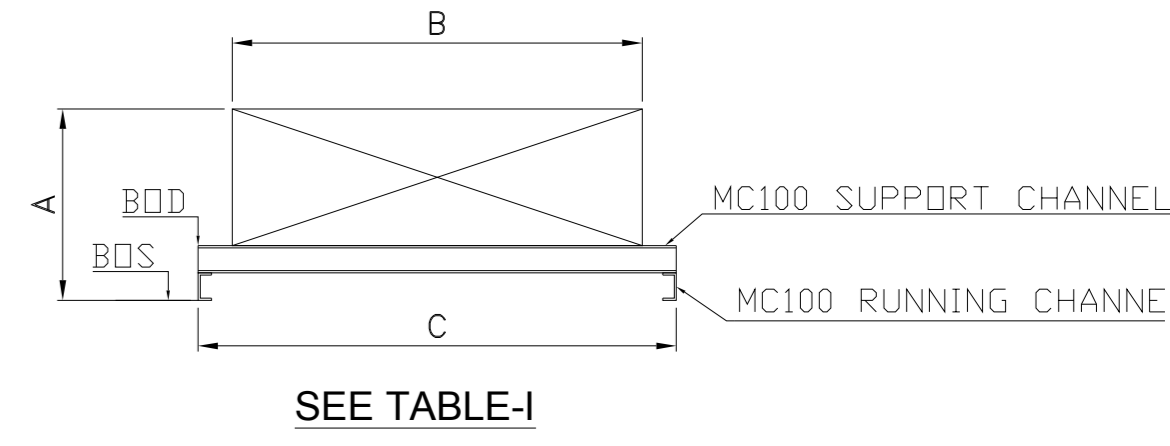
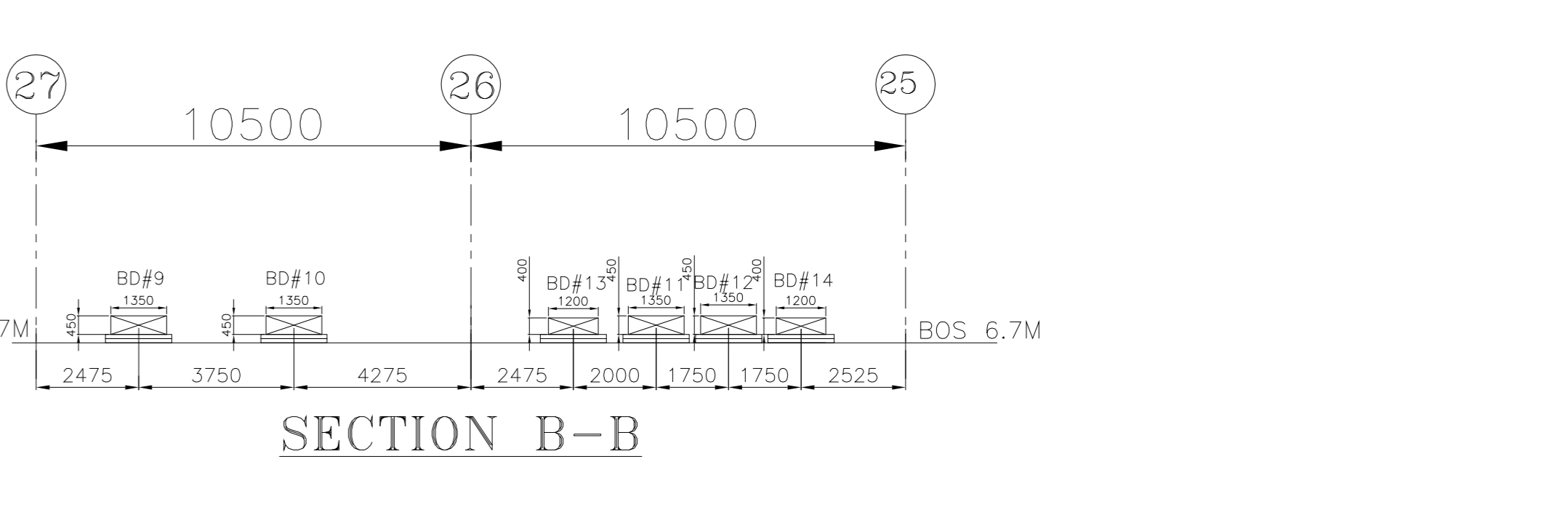
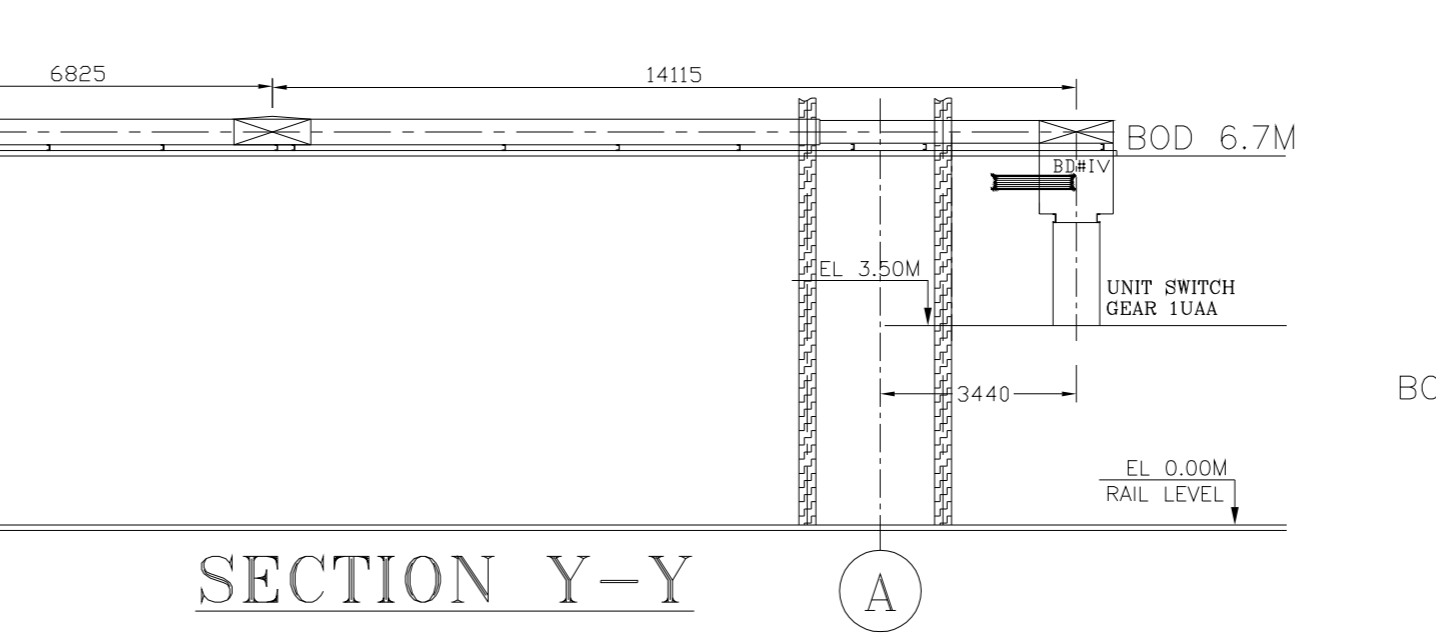
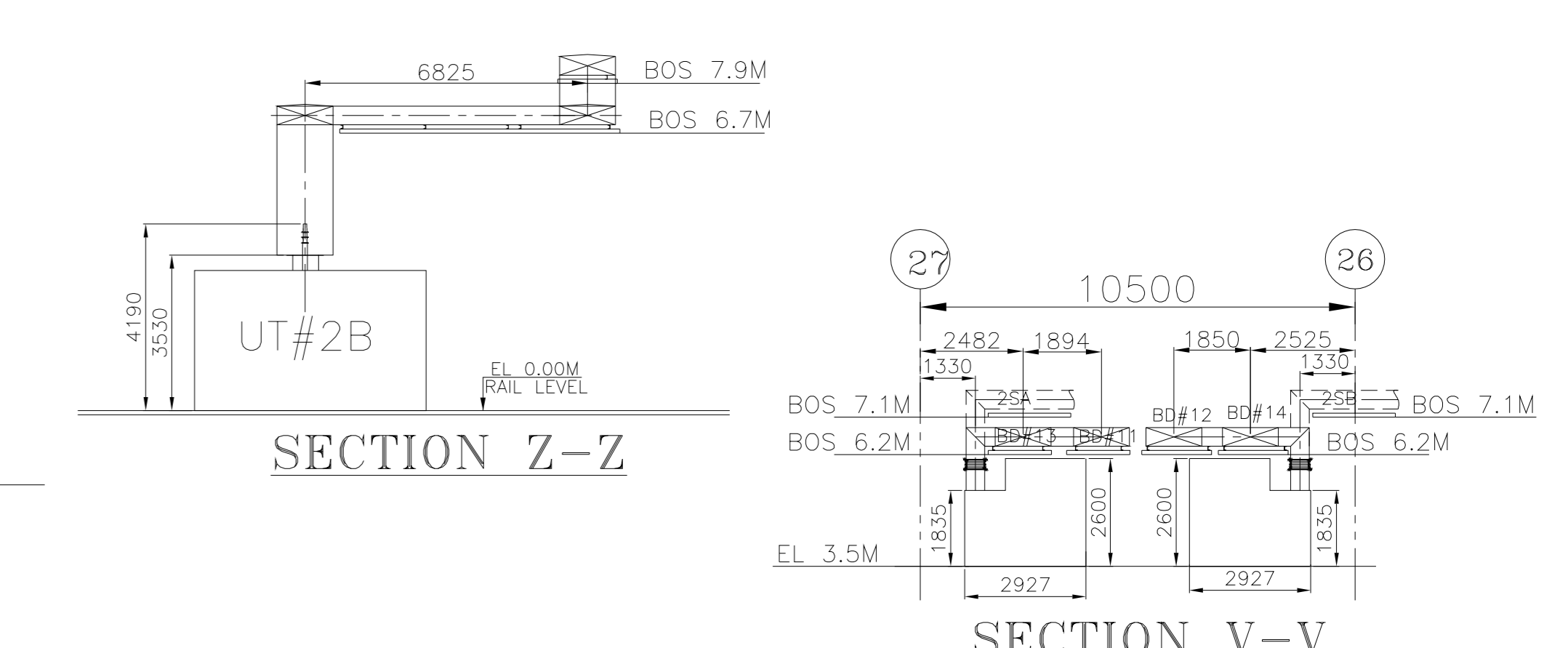
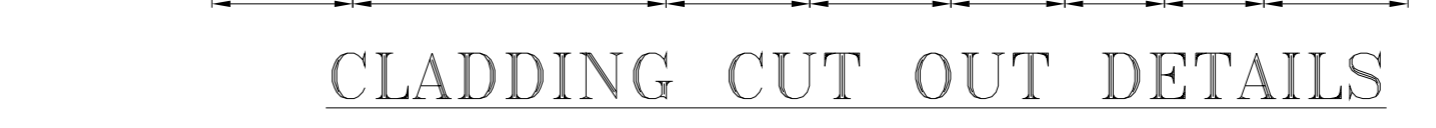
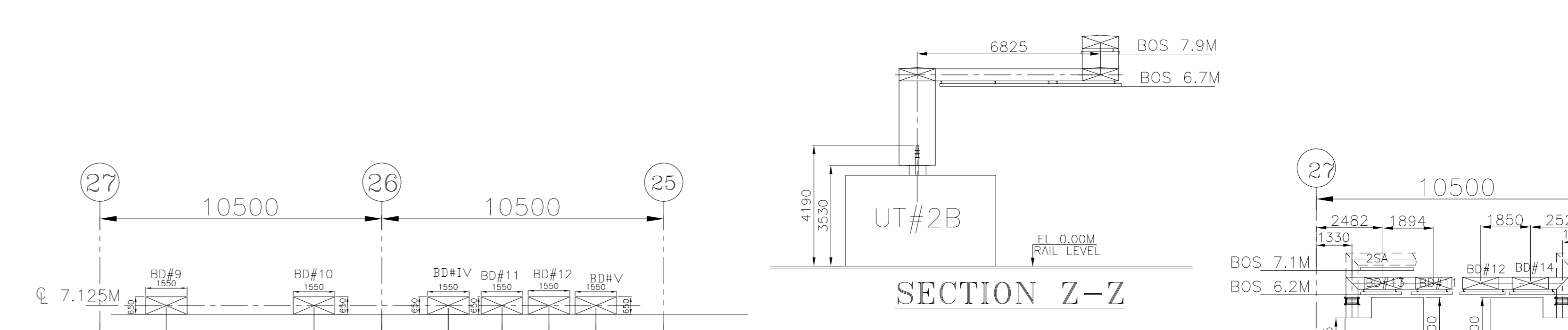
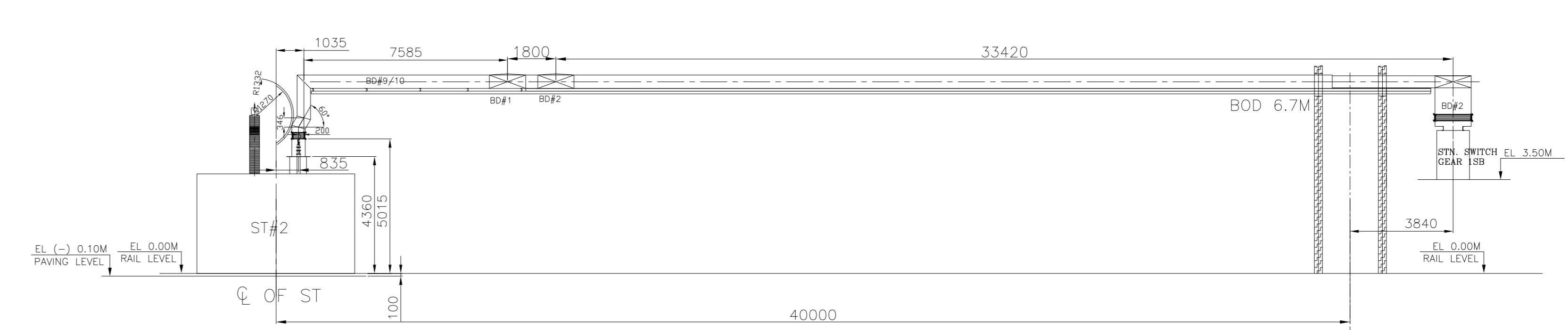
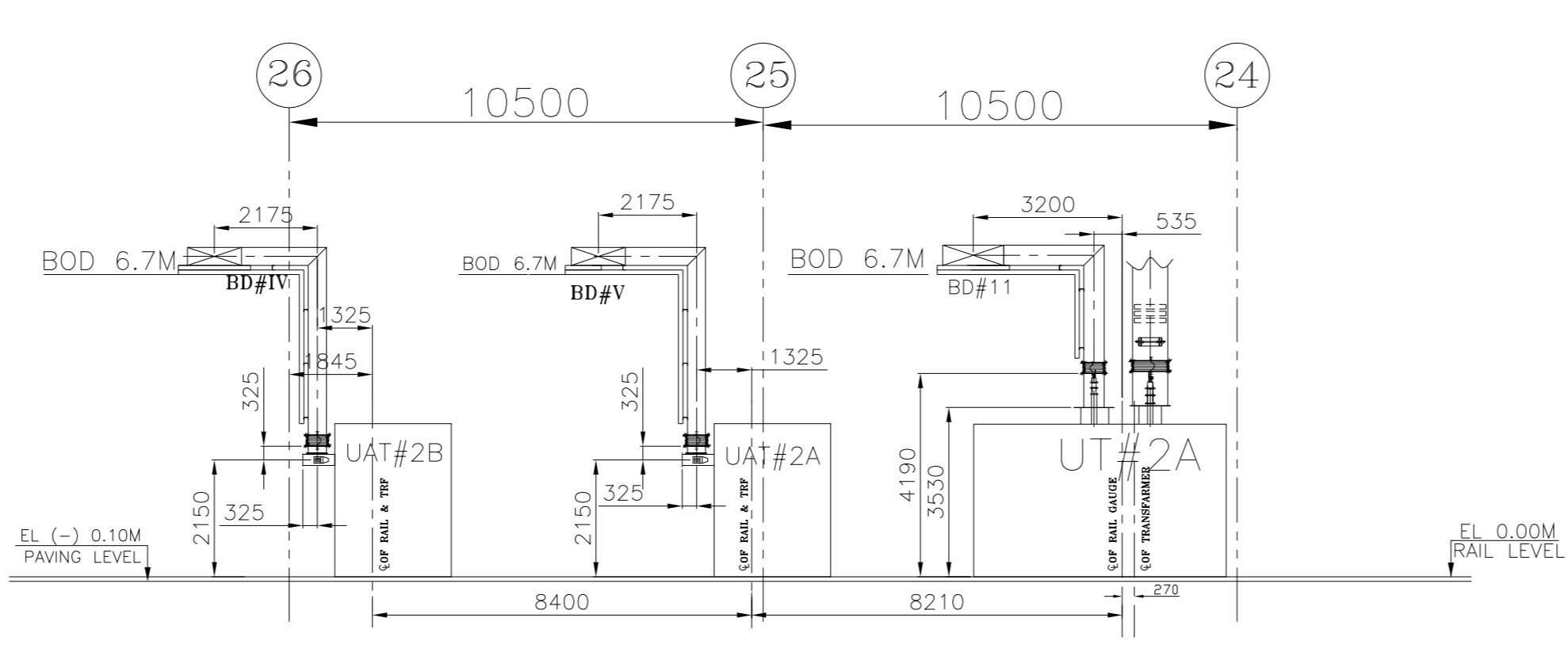
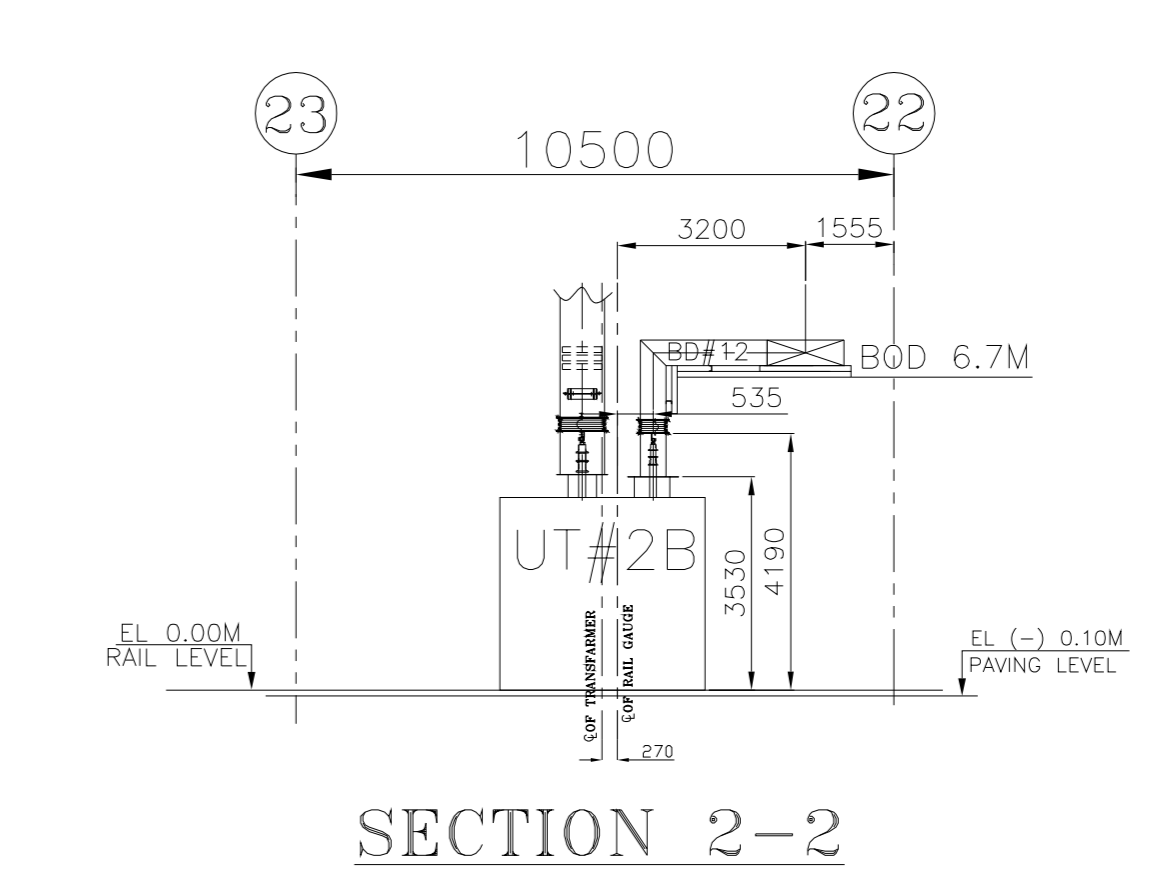
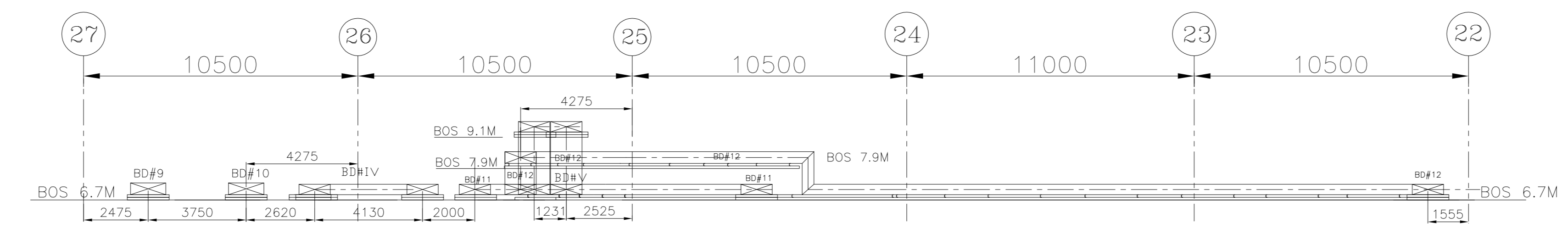
Sr. No.	N.T.P.C Comment	BHEL Reply
1	---	<p>Drawing revised to incorporate the following:-</p> <p>1.Modification of outdoor section for ST-2 (BD#9 & BD#10) to 500X1500 (as per accepted proposal refer mail dated 26.10.15)</p> <p>on the basis of above the revised document is submitted for re-approval.</p>

PRODUCED BY AN AUTODESK EDUCATIONAL PRODUCT



LEGEND:-

- SEAL OFF BUSHING
- SPLICE PLATE
- RUBBER BELOW
- FLEXIBLE
- INSPECTION WINDOW



SL.NO	BUSDUCT ROUTE BETWEEN		KV	Amps.	ENCLOSURE SIZE	CONDUCTOR SIZE
BD-9	ST-2	STN. SWITCHGEAR 2SA	11	3000	1500x500 1350x450	2x152.4 2x127
BD-10	ST-2	STN. SWITCHGEAR 2SB	11	3000	1500x500 1350x450	2x152.4 2x127
BD-11	UT-2A	UNIT SWITCHGEAR 2UA	11	2500	1350x450	2x127
BD-12	UT-2B	UNIT SWITCHGEAR 2UB	11	2500	1350x450	2x127
BD-IV	UAT-2B	UNIT SWITCHGEAR 2UAA	3.3	2750	1350x450 1200x400	2x127 2x127
BD-V	UAT-2A	UNIT SWITCHGEAR 2UAA	3.3	2750	1350x450 1200x400	2x127 2x127
BD-13	STN. SWITCHGEAR 2SA	UNIT SWITCHGEAR 2UA	11	2500	1350x450	2x127
BD-14	STN. SWITCHGEAR 2SB	UNIT SWITCHGEAR 2UB	11	2500	1350x450	2x127
BD-VI	UNIT SWITCHGEAR 2UAA	UNIT SWITCHGEAR 2UAA	3.3	2750	1200x400	2x127

PANEL	NORMAL	PH X-OVER
2SA	1,21	19
2UA	4	1
2SB	21,3,1	
2UB	16	19
2UAA	1,16,35	20

CURRENT RATING (AMPS)	B INCLUDING END FLANGE	A INCLUDING END FLANGE	C
3000(OUDOOR)	1584	742	1750
3000(INDOOR)/2500	1434	692	1600
2750(OUDOOR)	1434	692	1600
2750(INDOOR)	1284	642	1450

- NOTE:**
- GA OF ALL EQUIPMENTS MARKED IN DRAWING ARE INDICATIVE.
 - PAVING LEVEL IN TRANSF. YARD IS AT (-)0.1M
 - ALL PANELS IN WHICH PHASE REVERSAL IS REQUIRED IS MARKED WITH (#)
 - BOD : BOTTOM OF DUCT.

COPYRIGHT & CONFIDENTIAL

FIRST ANGLE PROJECTION

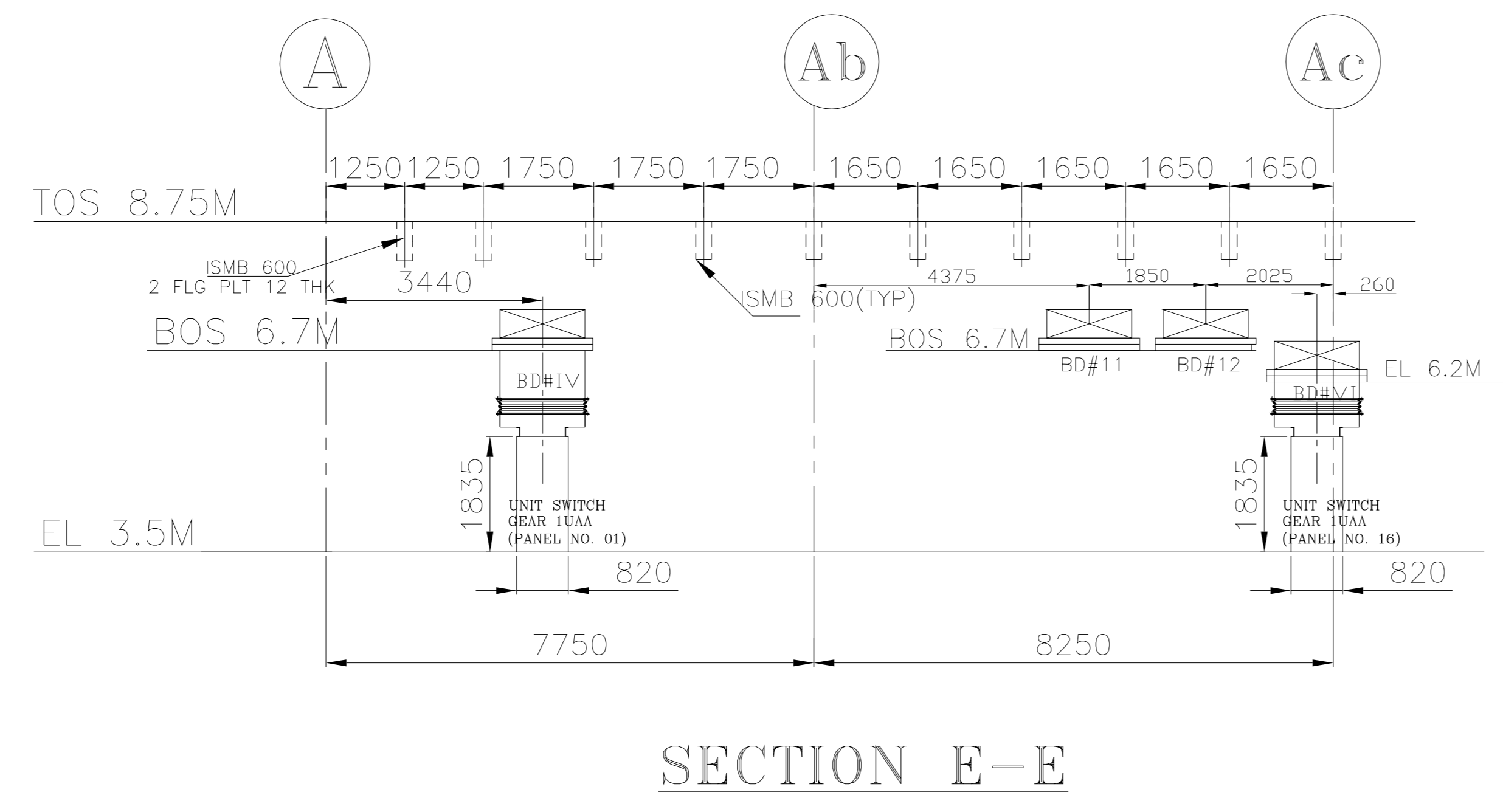
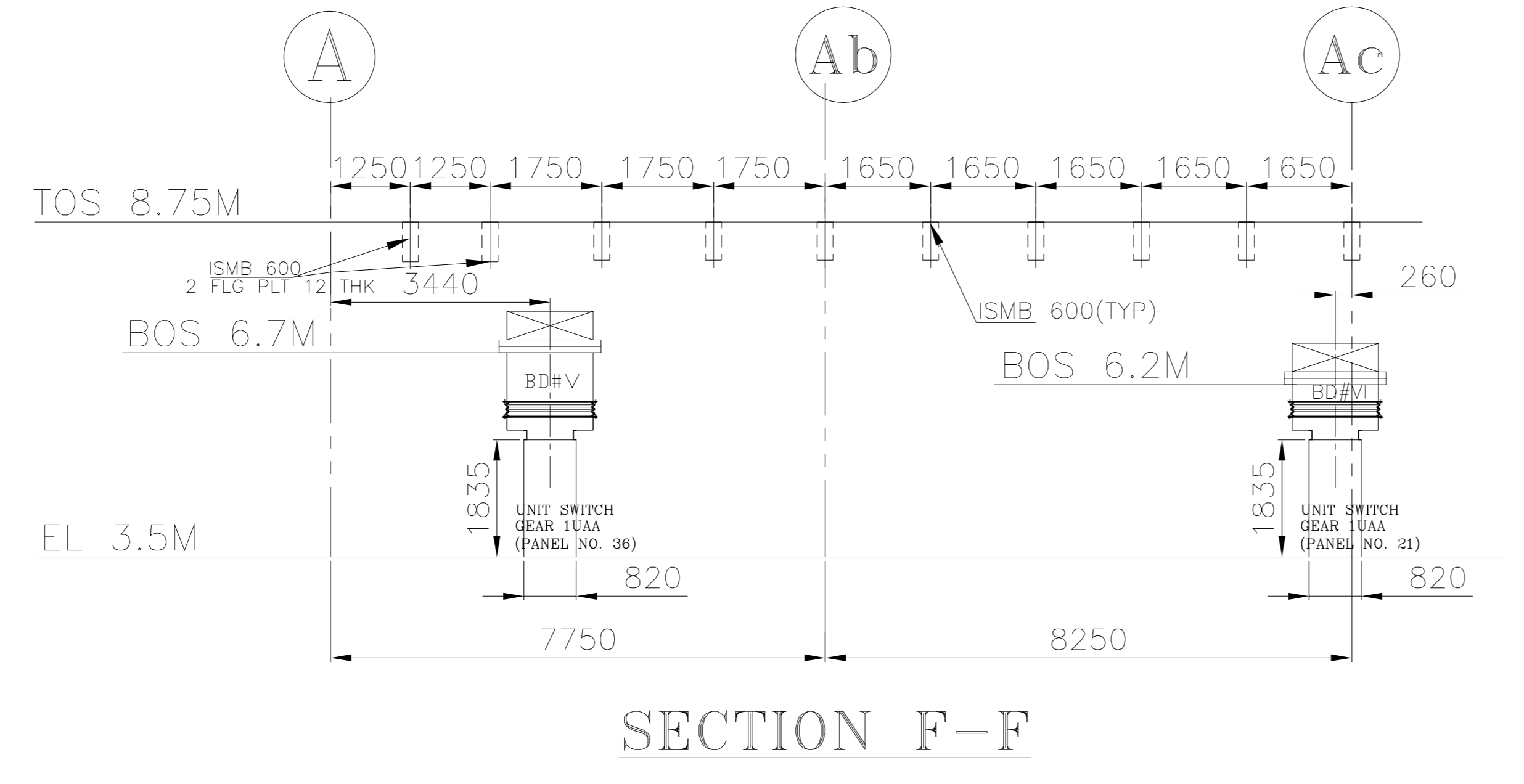
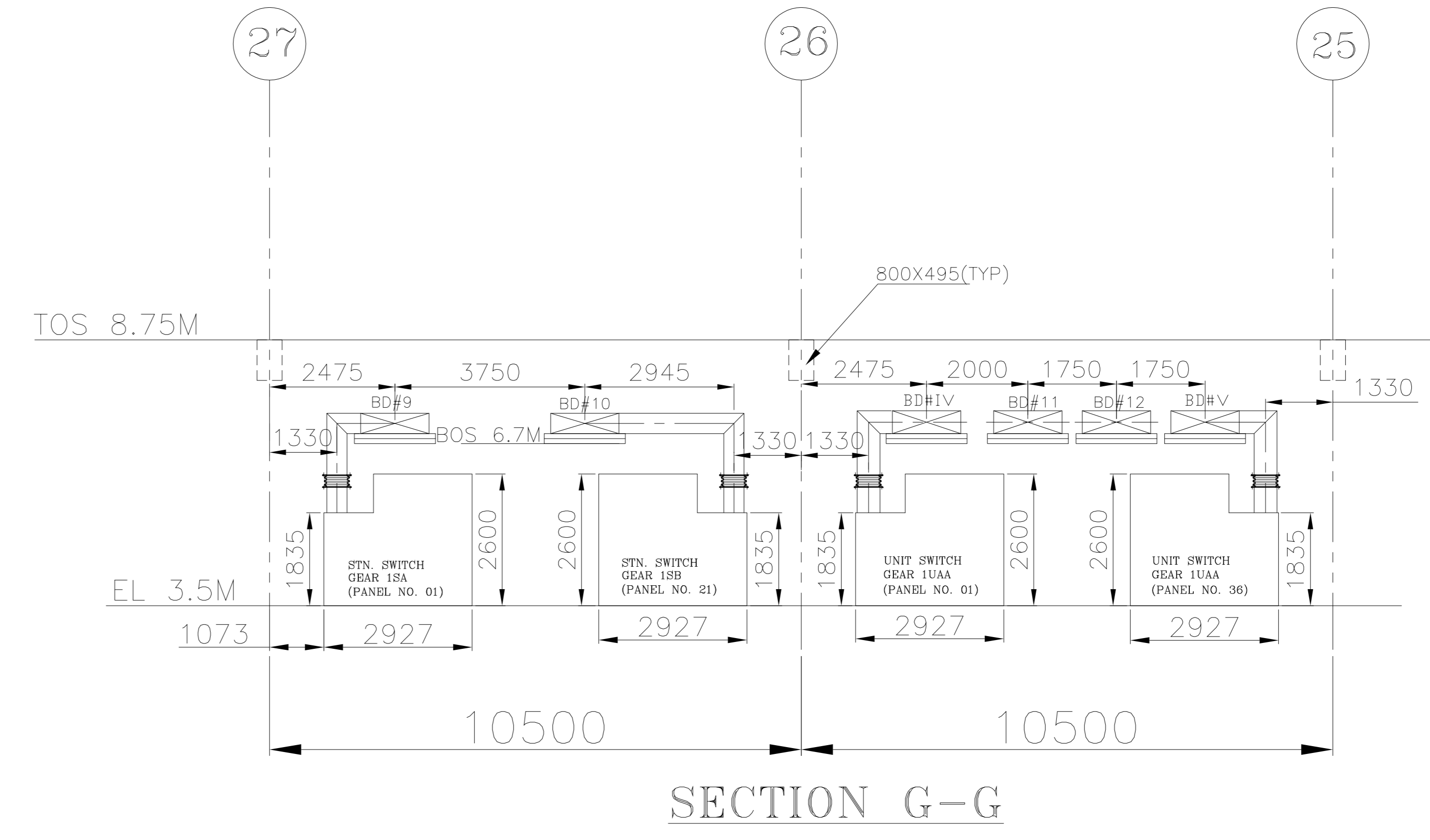
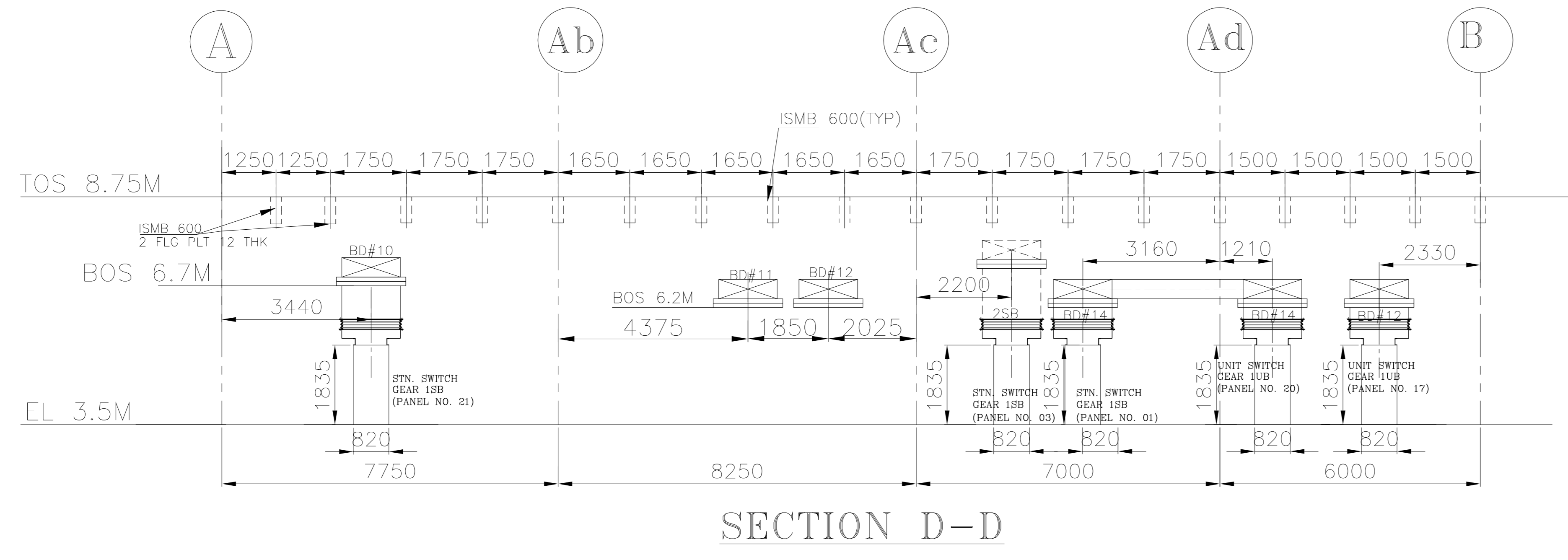
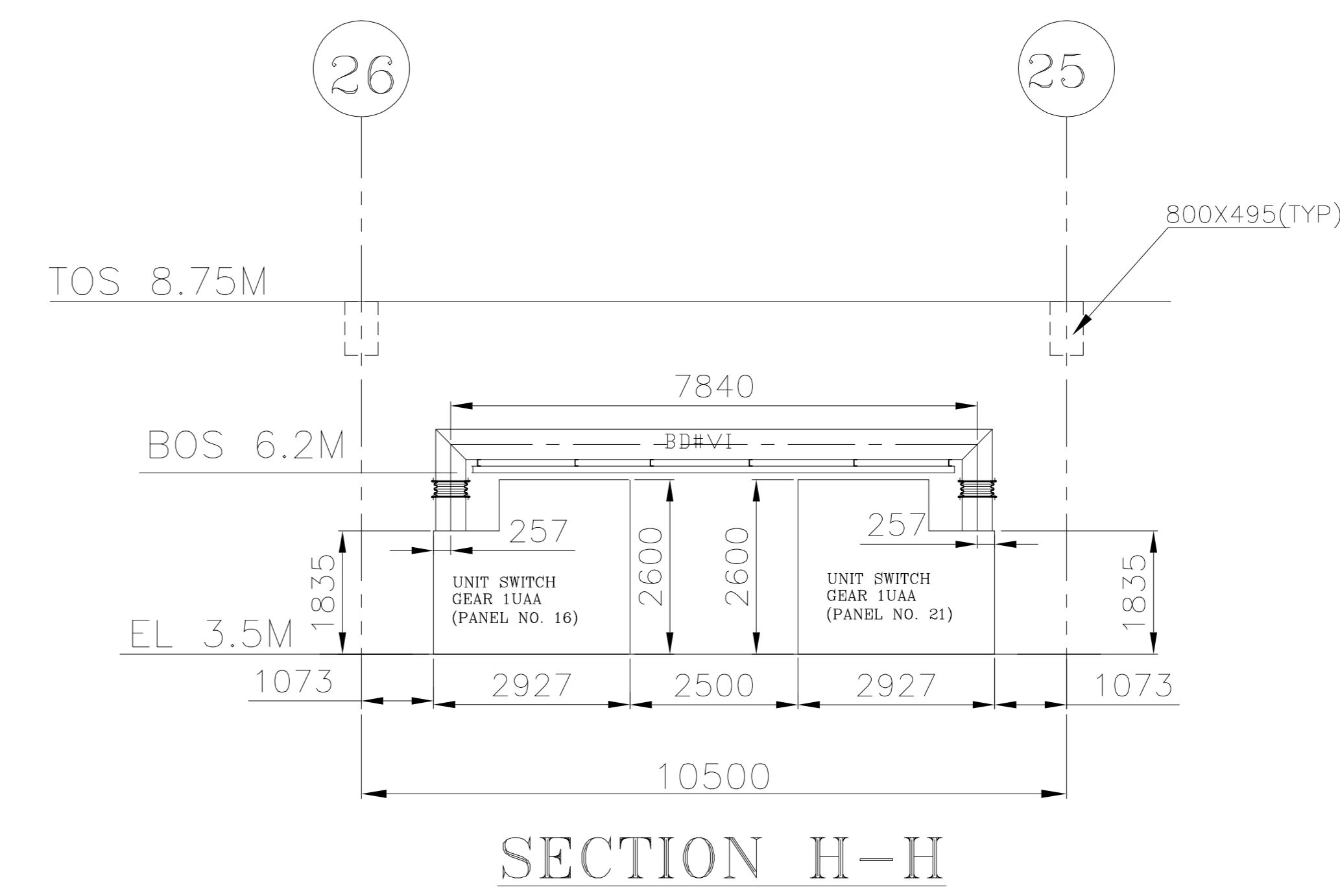
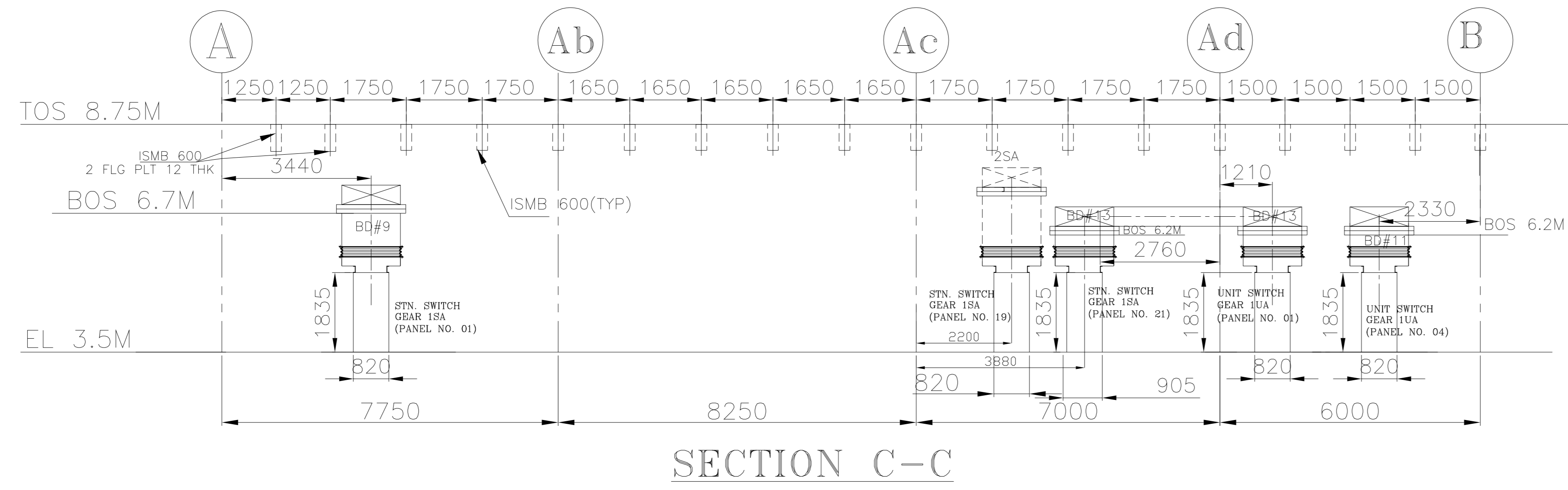
ALL DIMENSION IN MILLIMETER

THE INFORMATION ON THIS DOCUMENT IS THE PROPERTY OF BHARAT HEAVY ELECTRICALS LIMITED. IT MUST NOT BE USED DIRECTLY OR INDIRECTLY IN ANY MANNER DETRIMENTAL TO THE INTEREST OF THE COMPANY.

CUSTOMER N.T.P.C.		PROJECT 2x800MW GADARWARA	
 BHARAT HEAVY ELECTRICALS LIMITED RUDRAPUR		DRN. HIMANSHU	SIGN. DATE
DEPT. BDE		SCALE	NO. OF SHEETS
DRAWING NO. RU-BDE-572-24		NO. OF SHEETS	REV.
SHEET NO.- 01		NO. OF SHEETS- 02	REV. 05

REV.	DATE	ALTERED BY	CHKD.	REV.	DATE	ALTERED BY	CHKD.	REV.	DATE	ALTERED BY	CHKD.	REV.	DATE	ALTERED BY	CHKD.
1.	03.11.15	NRJ	NRJ	1.	03.09.15	NRJ	NRJ	1.	29.07.15	NRJ	NRJ	1.	01.07.15	NRJ	NRJ
DRAWING REVISED AS PER NTPC COMMENTS DATED 18.08.2015.															
DRAWING REVISED AS PER NTPC COMMENTS DATED 28.07.15.															
DRAWING REVISED AS PER NTPC COMMENTS DATED 08.06.2015.															

PRODUCED BY AN AUTODESK EDUCATIONAL PRODUCT



- REFERENCE DRAWINGS/DOCS -
1. TRANSFORMER YARD LAYOUT
 2. GA OF UT
 3. H.V & L.V. BUSDUCT TERMN DETAIL UT
 4. GA OF UAT
 5. BUSDUCT TERMN DETAIL UAT
 6. GA OF STN TRANSFORMER
 7. MOUNTING FLANGE OF ST
 8. MV SWITCHGEAR ROOM LAYOUT
 9. GA OF 11KV SPBD
 10. GA OF 3.3KVSPBD
 11. FLOOR BEAM AT EL 9.0M

- 9572-215-POE-F-001-SK REV R1
- 9572-501-PVE-B-31-06
- 9572-501-PVE-B-35-02
- 9572-215-PVE-B-058-01
- 9572-215-PVE-B-060-00
- 9572-501-PVE-B-22-04
- 9572-501-PVE-B-26-02
- 9572-215-POE-F-003-SK
- 9572-207-PBE-101 REV.00
- 9572-207-PBE-102 REV.00
- 9572-315-POC-C-0022-01

PRODUCED BY AN AUTODESK EDUCATIONAL PRODUCT
 ALL DIMENSIONS IN MILLIMETER
 FIRST ANGLE PROJECTION
 THE INFORMATION ON THIS DOCUMENT IS THE PROPERTY OF BHARAT HEAVY ELECTRICALS LIMITED. IT MUST NOT BE USED DIRECTLY OR INDIRECTLY IN ANY MANNER TO THE INTRUST OF THE COMPANY.
 COPYRIGHT & CONFIDENTIAL

CUSTOMER N.T.P.C.		PROJECT 2x800MW GADARWARA	
BHARAT HEAVY ELECTRICALS LIMITED RUDRAPUR		NAME: HIMANSHU SIGN: S. BASU DATE: 05.03.15 NO. OF VAR.: 05.03.15 APPROVED: ARVIND DATE: 05.03.15	
DEPT: BDE	UNTOLOM GR. C/M/F	SCALE: -	WEIGHT-KG: -
TITLE LAYOUT OF SEGREGATED PHASE BUSDUCT UNIT #2		DRAWING NO. RU-BDE-572-24	
REV. NO.: 02		NO. OF SHEETS: 02	

REV.	DATE	ALTERD.	UJAY	REV.	DATE	ALTERD.	UJAY	REV.	DATE	ALTERD.	UJAY	REV.	DATE	ALTERD.	UJAY	REV.	DATE	ALTERD.	UJAY
05	03.11.15	CHECKED	NRJ	04	03.09.15	CHECKED	NRJ	03	29.07.15	CHECKED	NRJ	02	01.07.15	CHECKED	NRJ	01	21.05.15	CHECKED	NRJ
1. DRAWING REVISED AS MARKED				1. REVISED AS PER NTPC COMMENTS dated 18.08.2015.				1. DRAWING REVISED INLINE WITH DISCUSSION HELD IN MEETING AT NTPC EPC ON 23&24.07.15.				1. REVISED AS PER NTPC COMMENTS dated 08.06.2015.				REVISED AS PER NTPC COMMENTS			