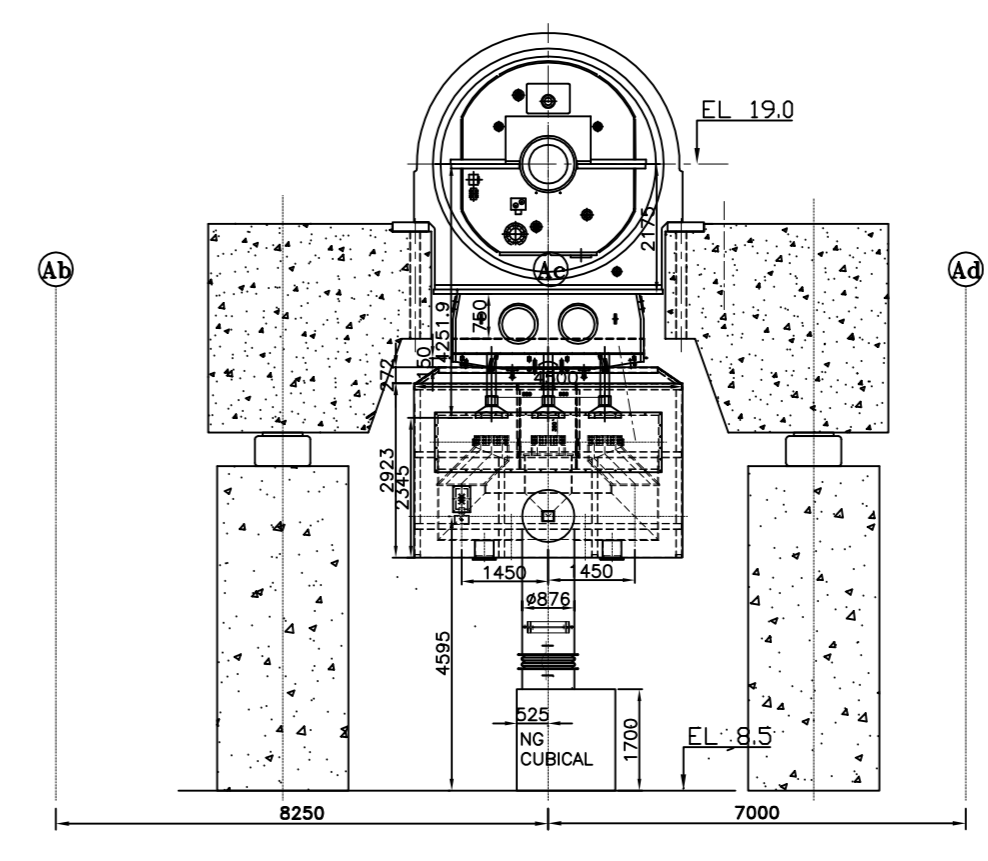
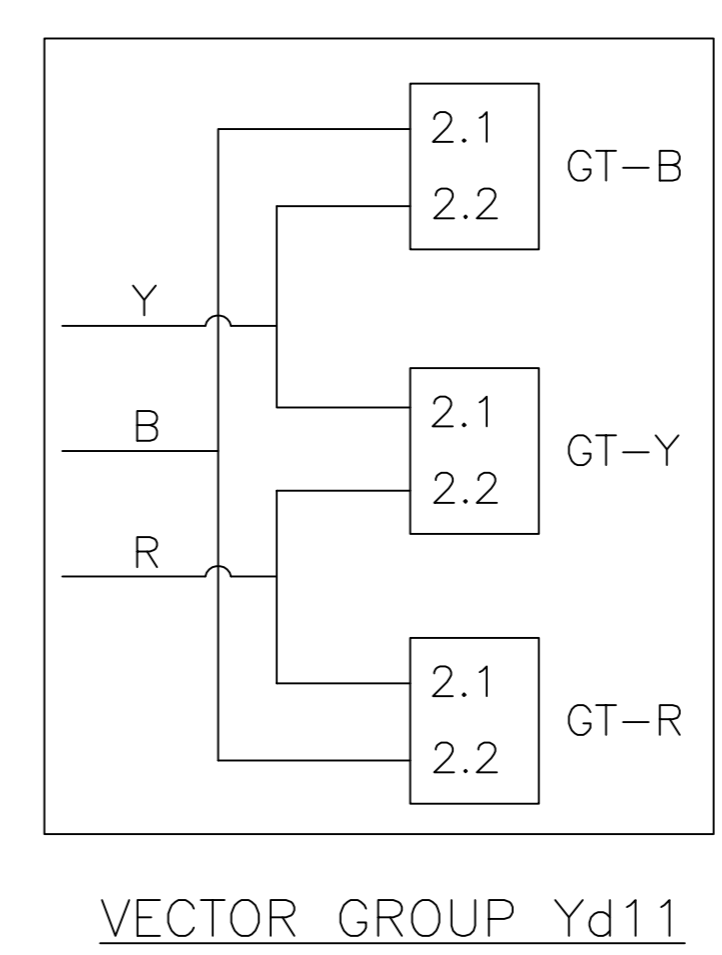
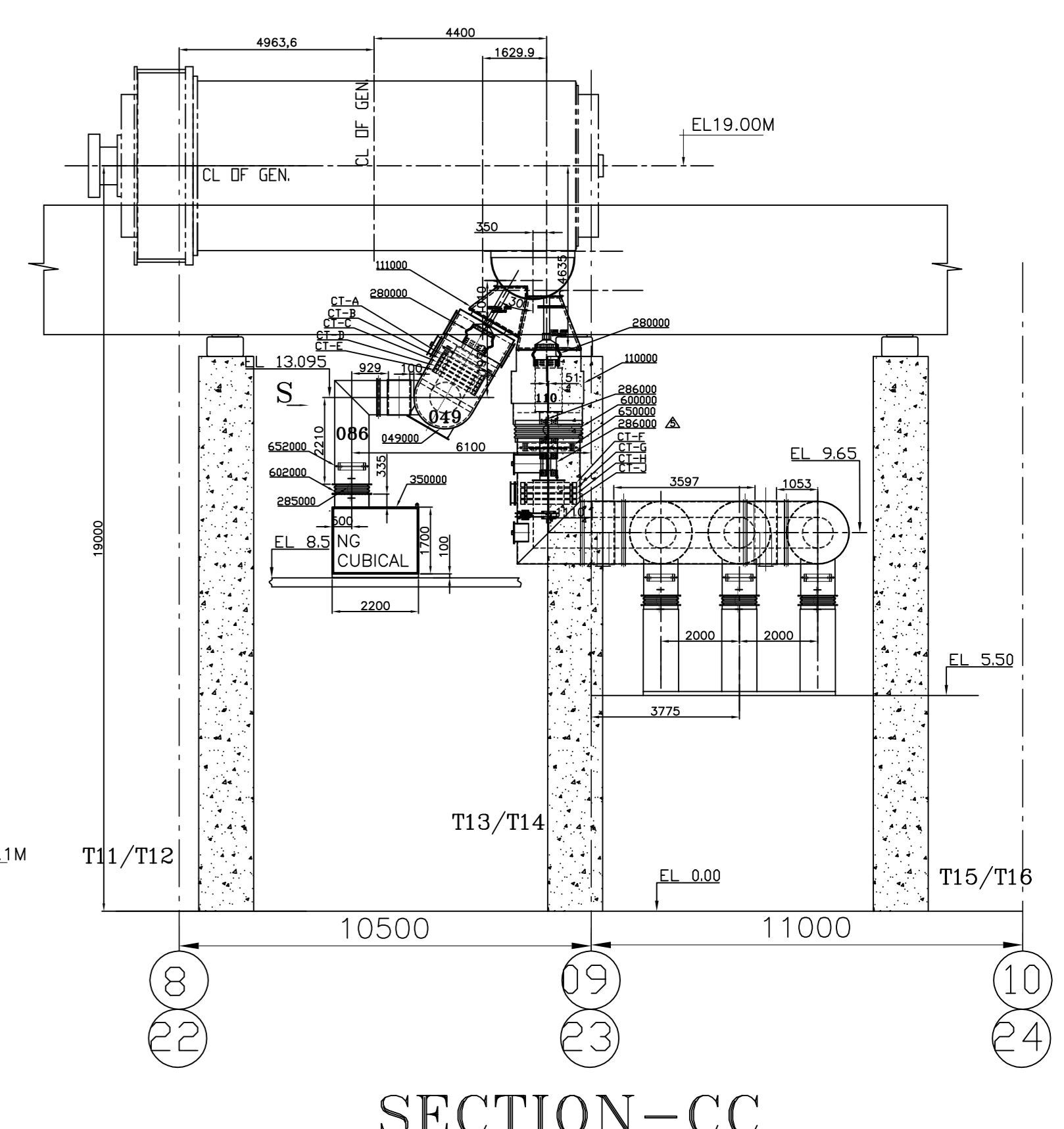
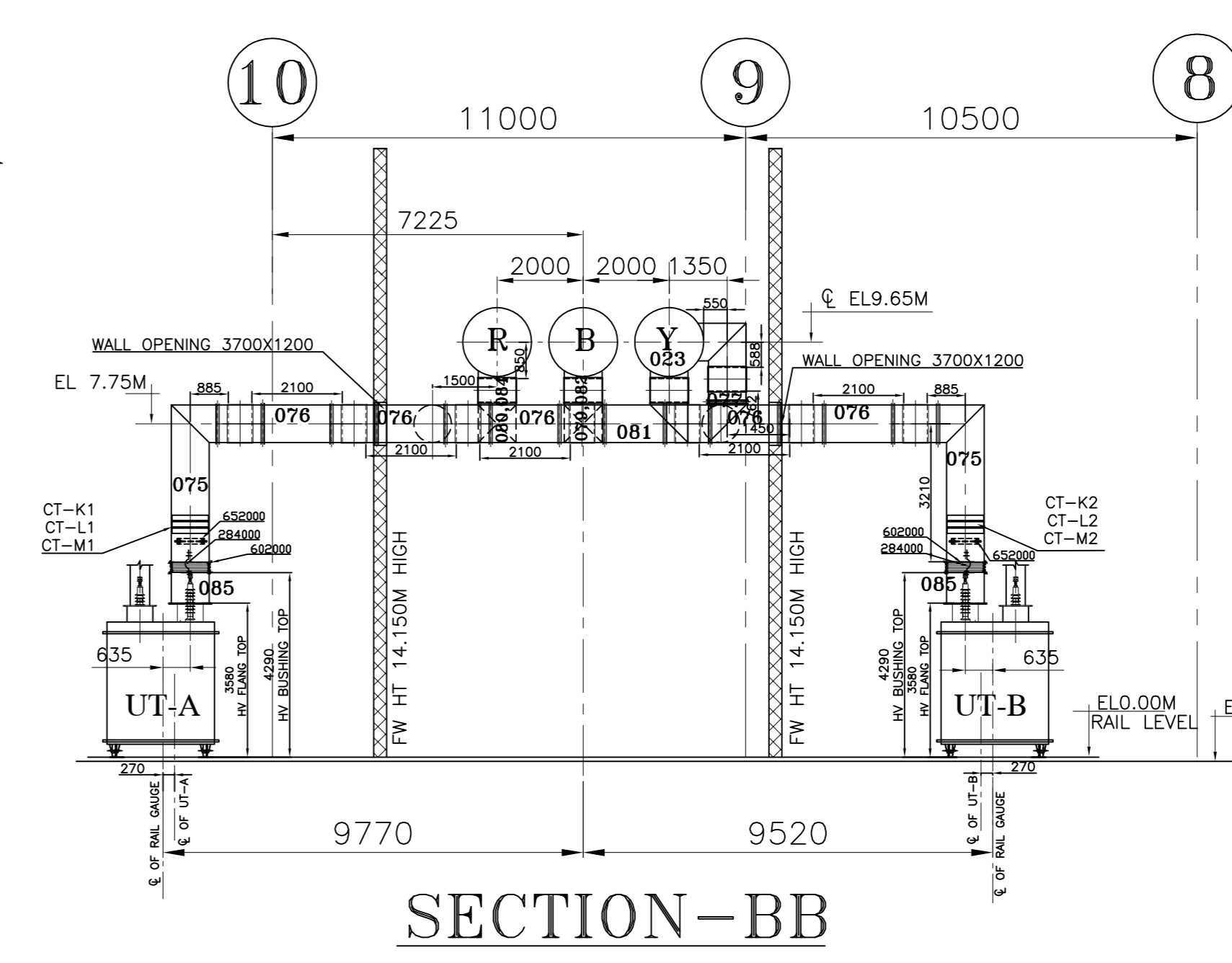
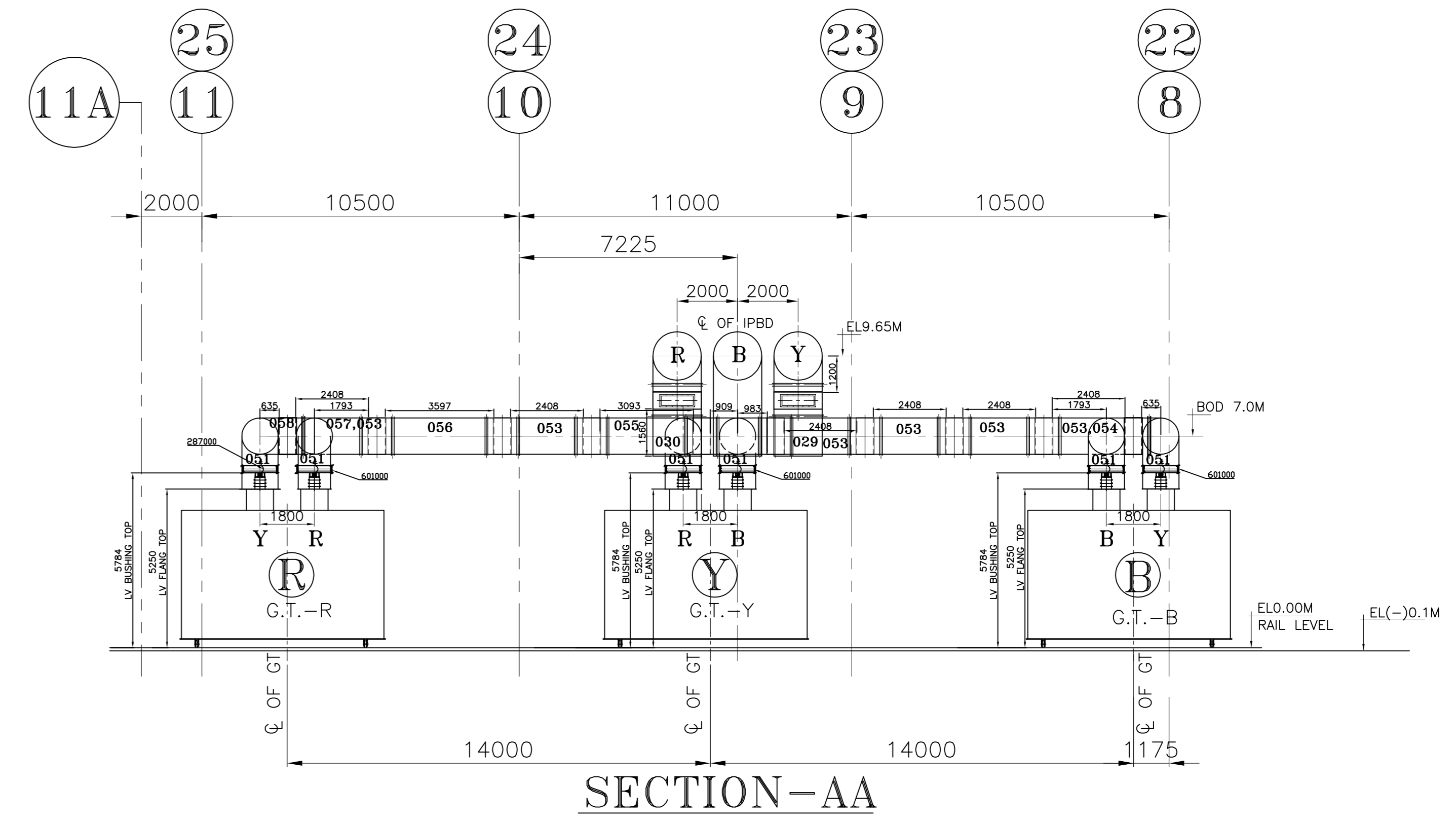
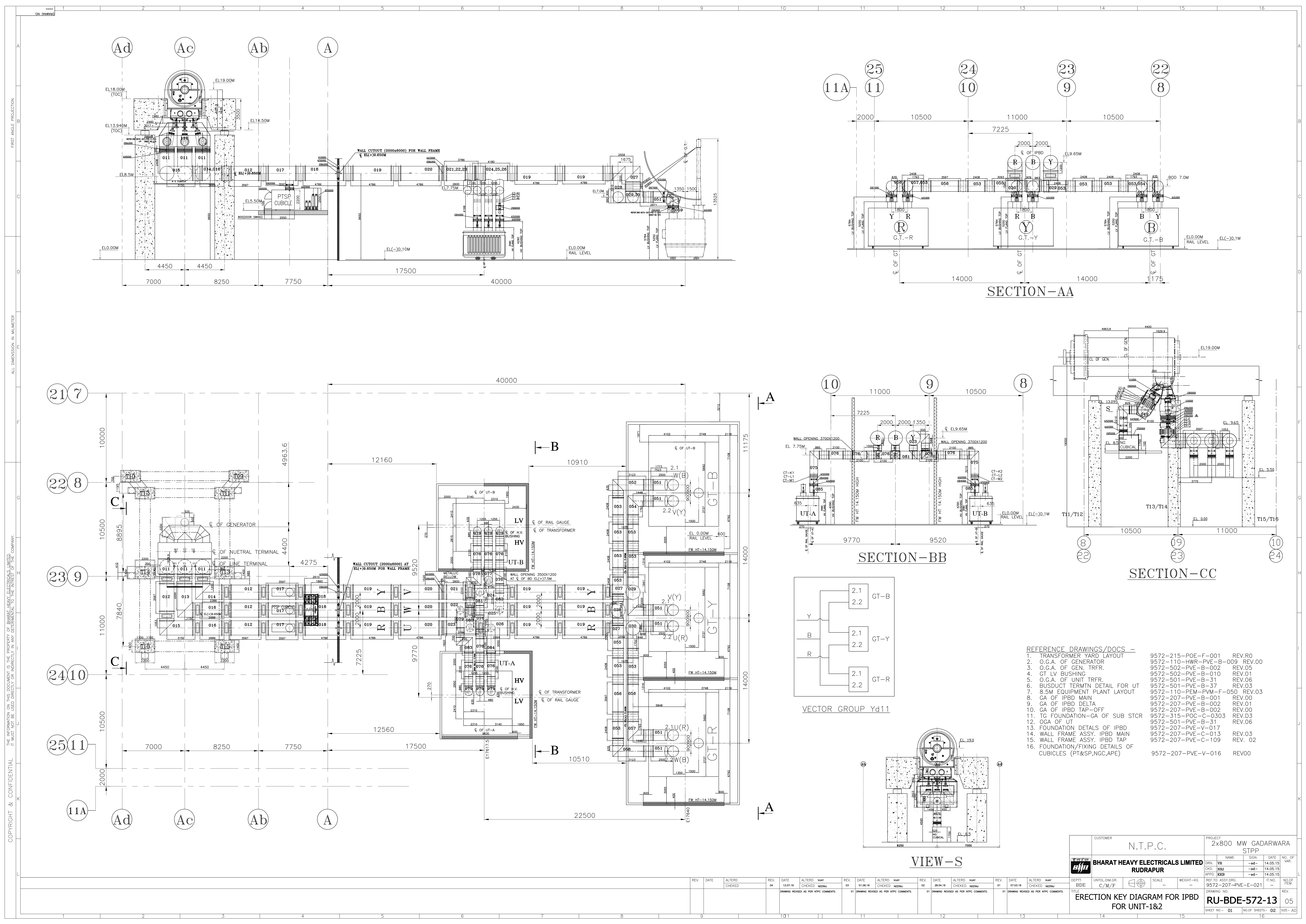


<b>PROJECT</b>	2X800 MW GADARWARA STPP
<b>PACKAGE</b>	BUS DUCT
<b>SUBJECT</b>	REPLY SHEET FOR ERECTION KEY DIAGRAM FOR IPBD FOR UNIT-1&2
<b>BHEL DOC NO</b>	RU-BDE-572-13, R05
<b>NTPC DOC NO</b>	9572-207-PVE-E-021, R05
<b>REFERENCE</b>	Trasnmittal noCC:PE207:27583 dated 25.07.2016

<b>Sr. No.</b>	<b>N.T.P.C Comment</b>	<b>BHEL Reply</b>
1	--	Quantity of Flexible Copper bolted/ Aluminium welded conductor joint (single Phase) for 22250Amp has been revised.



REFERENCE DRAWINGS/DOCS -

1. TRANSFORMER YARD LAYOUT	9572-215-POE-F-001	REV.00
2. O.G.A. OF GENERATOR	9572-110-HWR-PVE-B-009	REV.00
3. O.G.A. OF GEN. TRFR.	9572-502-PVE-B-002	REV.05
4. GT LV BUSHING	9572-502-PVE-B-010	REV.01
5. O.G.A. OF UNIT TRFR.	9572-501-PVE-B-31	REV.06
6. BUSDUCT TERMN DETAIL FOR UT	9572-501-PVE-B-37	REV.03
7. 8.5M EQUIPMENT PLANT LAYOUT	9572-110-PEM-PVM-F-050	REV.03
8. GA OF IPBD MAIN	9572-207-PVE-B-001	REV.00
9. GA OF IPBD DELTA	9572-207-PVE-B-002	REV.01
10. GA OF IPBD TAP-OFF	9572-207-PVE-B-002	REV.00
11. TG FOUNDATION-GA OF SUB STCR	9572-315-POC-C-0303	REV.03
12. OGA OF UT	9572-501-PVE-B-31	REV.06
13. FOUNDATION DETAILS OF IPBD	9572-207-PVE-V-017	REV.03
14. WALL FRAME ASSY. IPBD MAIN	9572-207-PVE-C-013	REV.03
15. WALL FRAME ASSY. IPBD TAP	9572-207-PVE-C-109	REV.02
16. FOUNDATION/FIXING DETAILS OF CUBICLES (PT&SP,NGC,APE)	9572-207-PVE-V-016	REV.00

CUSTOMER	N.T.P.C.	PROJECT	2x800 MW GADARWARA STPP
DRN.	VR	NAME	SCALE
CHKD.	NBJ	DATE	14.05.15
APPRD.	KKB	DATE	14.05.15
DEPT.	BDE	UNTOLODM GR.	C/M/F
WEIGHT-KG		NO. OF SHEETS	02
TITLE	ERECTION KEY DIAGRAM FOR IPBD FOR UNIT-1&2		
DRAWING NO.	RU-BDE-572-13		
SHEET NO.	01	TOTAL SHEETS	02

REV.	DATE	ALTERD	BY	REV.	DATE	ALTERD	BY	REV.	DATE	ALTERD	BY	REV.	DATE	ALTERD	BY
04	12.07.16	CHECKED	NEENA	03	01.06.16	CHECKED	NEENA	02	28.04.16	CHECKED	NEENA	01	07.03.16	CHECKED	NEENA

PRODUCED BY AN AUTODESK EDUCATIONAL PRODUCT  
 ALL DIMENSION IN MILLIMETER  
 FIRST ANGLE PROJECTION  
 COPYRIGHT & CONFIDENTIAL  
 THE INFORMATION ON THIS DOCUMENT IS THE PROPERTY OF BHARAT HEAVY ELECTRICALS LIMITED. IT MUST NOT BE USED DIRECTLY OR INDIRECTLY IN ANY MANNER DELETTERIAL TO THE INTEREST OF THE COMPANY.

LINE SIDE BUSDUCT DETAILS - "R" PHASE. Table with columns: S.NO, B.O.M, BREAK UP, TOTAL, No. Of 90° Bend, No. Of T Bend, No. Of BD, MAIN (Total Length, No. Of 90° Bend, No. Of T Bend), DELTA (Total Length, No. Of 90° Bend, No. Of T Bend), TAP OFF (Total Length, No. Of 90° Bend, No. Of T Bend), REMARK.

LINE SIDE BUSDUCT DETAILS - "Y" PHASE. Table with columns: S.NO, B.O.M, BREAK UP, TOTAL, No. Of 90° Bend, No. Of T Bend, No. Of BD, MAIN (Total Length, No. Of 90° Bend, No. Of T Bend), DELTA (Total Length, No. Of 90° Bend, No. Of T Bend), TAP OFF (Total Length, No. Of 90° Bend, No. Of T Bend), REMARK.

BILL OF QUANTITY. Table with columns: S.NO, DESCRIPTION, B.O.M., UNIT, UNIT-1, UNIT-2, TOTAL. Lists various electrical components and their quantities.

IPBD Main(R Phase) : 4715+6860+52152+2650 : 66377mm
IPBD Delta(R Phase) : GT-R (12000+3771+856+1297 : 17924 mm ) & GT-Y ( 3771+856+1297 : 5924 mm )
IPBD Tap-off(R Phase) :UT-A (1900+7135+4170=13205mm), UT-B (1900+5685+805+5200+4170: 17760mm) & PTSP Tap (1850 mm )

IPBD Main(Y Phase) : 4715+2860+48152+2650 : 58377mm
IPBD Delta(Y Phase) : GT-Y (2000+3771 + 856+1297 : 7924mm ) & GT-B ( 10200+3771+856+1297 : 16124mm )
IPBD Tap-off(Y Phase) : UT-A (1900+11135+4170 : 17205mm), UT-B (1350+1900+5535+4170 : 12955mm ) + PTSP Tap (1850 mm )

NEUTRAL SIDE BUSDUCT DETAILS. Table with columns: S.NO, B.O.M, BREAK UP, TOTAL, No. Of 90° Bend, No. Of T Bend, No. Of BD, MAIN (Total Length, No. Of 90° Bend, No. Of T Bend), TAP OFF (Total Length, No. Of 90° Bend, No. Of T Bend), REMARK.

IPBD Main (NEUTRAL SIDE) : 9935mm
IPBD Delta(Y Phase) : --
IPBD Tap-off (NEUTRAL SIDE) : 4839mm

LINE SIDE BUSDUCT DETAILS - "B" PHASE. Table with columns: S.NO, B.O.M, BREAK UP, TOTAL, No. Of 90° Bend, No. Of T Bend, No. Of BD, MAIN (Total Length, No. Of 90° Bend, No. Of T Bend), DELTA (Total Length, No. Of 90° Bend, No. Of T Bend), TAP OFF (Total Length, No. Of 90° Bend, No. Of T Bend), REMARK.

IPBD Main(B Phase) :4715+4860+48477+2650: 60702 mm
IPBD Delta(B Phase) : GT-R (15800+5446+856+1297 : 23399mm ) & GT-B ( 14000+5446+856+1297 : 21599 mm )
IPBD Tap-off(B Phase) :UT-A (1900+3500+945+5635+4170 : 16150mm), UT-B (1900+8885+4170: 14955mm) & PTSP Tap (1850 mm )

BILL OF QTY. Table with columns: S.NO, B.O.M., QTY, DESCRIPTION. Lists quantities for various electrical components.

PRODUCED BY AN AUTODESK EDUCATIONAL PRODUCT. FIRST ANGLE PROJECTION. ALL DIMENSIONS IN MILLIMETER. COPYRIGHT & CONFIDENTIAL.

PRODUCED BY AN AUTODESK EDUCATIONAL PRODUCT.

Customer: N.T.P.C. PROJECT: 2x800 MW GADARWARA STPP. BHARAT HEAVY ELECTRICALS LIMITED RUDRAPUR. ERECTION KEY DIAGRAM FOR IPBD FOR UNIT-1&2. RU-BDE-572-13. SHEET NO. 01 NO. OF SHEETS 02 SIZE-A0.

Revision table with columns: REV. NO., DATE, ALTERED BY, CHECKED BY, REVISION. Lists various revision entries.