

TENDER SPECIFICATION FOR FABRICATION AND LAYING OF VARIOUS SIZES OVERHEAD COMPRESSED AIR PIPE LINES FROM DISTRIBUTION POINT TO NEWLY CONSTRUCTED SHOP FLOOR IN UNIT-II, BHEL, TRICHY.

PART- I

1) Technical cum qualification bid

a. Notice inviting Tender

| | | |
|----|---|---|
| 01 | Name of work | Fabrication and laying of various sizes overhead Compressed Air pipe lines from distribution point to newly constructed shop floor. |
| 02 | Location of work | Unit II, BHEL Trichy Complex |
| 03 | Estimated Value | Rs.27.90 Lacs |
| 04 | Earnest Money Deposit | Rs. 60,000/- |
| 05 | Delivery | FOUR (4) MONTHS(From the date of commencement of the work which will be reckoned from the date handing over the site to the contractor) |
| 06 | Last Date for Receipt of Tenders | 04-06-2011 / 03:00 PM |
| 07 | Date of Technical cum Qualification Bid Opening | 04-06-2011 / 03:30 PM |
| 08 | Date of RA/Price Bid Opening | Will be intimated separately to those who are qualified. |
| 09 | Duration of work after releasing work order | 4 Months |
| 10 | Guarantee Period for workmanship | (Twelve) Months from the date of actual completion of the entire work and handed over to Bharat Heavy Electricals Limited. |

The Tender documents can be down loaded from BHEL website / govt. website at free of cost.

- b. The Contractors must submit their Tenders as required in TWO parts in separate sealed covers prominently super scribed as PART-I TECHNICAL CUM QUALIFICATION BID and PART-II PRICE BID and also indicating on each of the covers, The tender reference No. and due date and time as mentioned in the tender notice
- c. A separate EMD cover should also be submitted. PART-I, PART-II and EMD covers shall be placed in a common cover super scribing Name of work, Tender reference No. and due date.
- d. Tenders may be finalised through TWO PART System or BY REVERSE AUCTION.

Clarifications on the tender specification if any may be sought by the bidders so as to reach this office at least seven days before the tender due date .

ISSUING OFFICER

CONTRACTOR'S SIGNATURE

2) Declaration by the bidders

2.1) Declaration by bidder’s authorized signatory

Ref no: ----- Date: -----

I, hereby certify that all the information and data furnished by me with regard to this tender specification are true and complete to the best of my knowledge. I have gone through the specifications, conditions and stipulations in detail and agree to comply with the requirements and intent of the specification. I further certify that i am duly authorised representative of the under mentioned bidder and a valid power of attorney to this effect is also enclosed.

Date:

Signature of authorized signatory
with seal

2.2) Certificate of no-deviation

Ref no: ----- date-----

We, M/s

hereby certify that notwithstanding any contrary indications/ conditions elsewhere in our offer documents, i/we have neither set any terms and conditions nor there is any deviation taken from the conditions of BHEL’s tender specifications, either technical or commercial, and i/we agree to all the terms and conditions mentioned in BHEL’s tender specification with associated amendments and clarifications.

Date:

Signature of the bidder

CONTRACTOR’S SIGNATURE

2.3) Format for e – payment

FORMAT TO RECEIVE E-PAYMENT THROUGH EXISTING ACCOUNT WITH NEFT/SEFT/RTGS ENABLED BANK BRANCH

Sub: E-payments vide NEFT/SEFT/RTGS - Reg.

| | | |
|----------------------------------|---|--|
| VENDOR CODE AS PER BHEL | : | |
| VENDOR NAME AS PER BANK RECORDS | : | |
| ACCOUNT TYPE | : | |
| BANK ACCOUNT NUMBER | : | |
| NAME & ADDRESS OF THE BANK | : | |
| BRANCH CODE | : | |
| BRANCH RTGS CODE | : | |
| BRANCH MICR CODE | : | |
| NAME OF THE AUTHORISED SIGNATORY | : | |

I/we confirm that I/We will bear the charges, if any levied by my/our bank for the credit of SEFT/RTGS amounts in our account.

For.....

SIGNATURE
(Authorized signatory)

We confirm that we are enabled for receiving NEFT/SEFT/RTGS credits and we further confirm that the account number, the signature of the authorized signatory, branch code, RTGS code and MICR code of our branch mentioned above are correct.

BANK VERIFICATION
(Manger's/Officer's signature under bank stamp)

Note: The above format duly filled and signed by the Contractor and the Bank authorities shall be enclosed along with offer so as to return the EMD amount through Electronic media.

CONTRACTOR'S SIGNATURE

3) Tender qualifying criteria:

Bidder must fulfil the following qualifying criteria concurrently for BHEL to accept the offer on Techno-Commercial ground and if any condition was not met by any vendor the offer may liable for rejection.

- a. Bidder must be in the business of Fabrication and Erection of Pipe Lines for the last one year as on 30/04/2010.
- b. Bidder must have fabricated and erected at least 100 meters of over head pressure pipe line of 2” or above size.

They should provide necessary work order copies. Only vendors who have previous experience in the work of this nature and description detailed in this tender specification are expected to quote for this work duly detailing their experience along with the offer.

- c. Financial Status:
 - i. Audited balance sheet for three years to be provided. (Financial years 2007-08, 2008-09 & 2009-10)
 - ii. Copies of the income tax return for previous three years to be provided. (Financial years 2007-08, 2008-09 & 2009-10)
 - iii. The Vendor should produce solvency certificate from a schedule bank for a value of 10 lacs
- d. Offer should be submitted along with EMD.

CONTRACTOR'S SIGNATURE

SCOPE OF WORK

1) OUTLINE

Fabrication and laying of various sizes overhead Compressed Air pipe lines from distribution point to newly constructed shop floor in HPBP Unit-II, BHEL, Trichy.

2) QUANTUM OF WORK

| Sl. No. | Work | Quantity | Unit |
|---------|---|----------|--------|
| 01 | Main Header Pipe of Diameter 12" | 240 | Meters |
| 02 | Sub Header Pipe of Diameter 8" | 350 | Meters |
| 03 | Bay Distribution Header Pipe of Diameter 4" | 1840 | Meters |
| 04 | Vertical Drop Line of Diameter 1" | 1400 | Meters |
| 05 | Control Valves for Building Isolation 12" | 2 | No |
| 06 | Control Valves for Building Isolation 8" | 1 | No |
| 07 | Control Valves for Bay Isolation 4" | 18 | No |
| 08 | Control Valve\Tapping Point for End Points | 215 | No |
| 09 | Installation of Pressure Gauges | 10 | No |

3) LAYING OF 12" OVER HEAD COMPRESSED AIR PIPE LINE

The 12" Pipe line is to be fabricated and erected on the existing above ground trestles at approximate height of 8m and above. The trestles are located parallel to the road in open area, the trestles will not have complete road access and the Contractor shall consider this fact during work content evaluation. The 12" Pipe line is to be installed from 12" bend and connected to 8" pipe line inside the shop floor. Approximate length of this pipe line is 240m.

4) LAYING OF 8" OVER HEAD COMPRESSED AIR PIPE LINE

The 8" Pipe Line will be routed from the 12" pipe line to the 4" Pipe Line. The 8" Pipe line is to be fabricated and erected indoors on supports fabricated at approximate height of 8m to 11m. These supports are to be fabricated as per BHEL Supervisor's instructions and will have to be designed to additionally carry 4" LPG & 4" Oxygen Pipe Lines and welded to existing Civil Structures. Approximate Length of this pipe line is 350m.

5) LAYING OF 4" OVER HEAD COMPRESSED AIR PIPE LINE

The 4" Pipe Line will be routed from the 8" pipe line and installed throughout the bays. The 4" Pipe line is to be fabricated and erected on supports fabricated at approximate height of 8m. These supports are to be fabricated as per BHEL Supervisor's instructions and will have to be designed to additionally carry 2" LPG & 2" Oxygen Pipe Lines and welded to existing Civil Structures. Approximate Length of this pipe is 1840m.

CONTRACTOR'S SIGNATURE

6) LAYING OF 1" COMPRESSED AIR DROP AND DRAIN LINE

The 1" Pipe line is to be fabricated and erected from the 4" pipe line at height of 8m and erected directly downwards till 1.5m above floor level. The required Bends for 1" Pipe line should be fabricated. The vertical drop line is to be properly supported with minimum two supports which are to be fabricated as per BHEL Supervisor's instructions and will have to be designed to additionally to support 1" LPG & 1" Oxygen Pipe Drop Lines and welded to existing Civil Structures. The 1" drop line should be installed with required end connection for fitting of the valves. This 1" drop line will be located at every 12m of the running 4" pipe line besides every column in the bay. Proper clamps are to be fixed on the supports and the pipe line, end tapping valve or manifold are to be fastened to them. The Contractor shall install the required 1" valve with threaded ends. The 1" Pipe line is to be fastened to 1" valve. Approximate length of this pipe is 1400m.

7) DETAILS ON INSTALLATION OF 12", 8" AND 4" VALVES

The 12", 8" & 4" Valves are to be installed at locations specified by BHEL Supervisor. The vendor shall install required end connection flanges, gaskets and fasteners during the installation of the valves. The valves should be supported wherever required. The approximate quantity of the valves is mentioned in Annexure.

8) DETAILS ON INSTALLATION OF 1" VALVE AND QRC/TAPPING MANIFOLD

All the drop lines and drain lines are to be installed with 1" Threaded Ball Valve with required sealing agents. The 1" valve will should further be fastened to Air Tapping Manifold or QRC's with sealing agents. The approximate quantity of the Tapping Points will be 215 Nos.

9) MOUNTING OF PRESSURE GAUGES

Each bay distribution line (4" Line) is to be installed with a Pressure Gauge. The pressure gauge should be installed in vertical position and a viewable location as per the instructions of BHEL supervisor. The pressure Gauges should be installed with required isolation valve. The total quantity of pressure gauges to be installed will be approximately 10 nos. The end connection of the pressure gauge will be M20 X 1.5mm male connection.

10) GENERAL PIPE LAYING DETAILS AND INSTRUCTIONS FOR ALL THE ABOVE WORKS

- a. All pipe lines should be fabricated and erected as per general pipe laying standards ensuring proper levelling, straightness. Pipe lines shall be routed and fabricated to ensure minimum pressure drop/line loss.
- b. The pipeline should be routed such that it doesn't interfere with any Civil or Electrical or Crane or Mechanical Functions in the shop floor. The Pipeline routing will vary to suit the site conditions and production requirement; hence the contractor should accommodate these changes as informed.

CONTRACTOR'S SIGNATURE

- c. The pipe line should be routed as per drawing CEG:TP:00:364 (Drawing for Tender Purpose Only).
- d. The contractor shall employ sufficient skilled, welders (only trained and certified overhead pipe line welders will be considered), fitters, etc. for completion of the contract. All welders should be approved by BHEL supervisor prior to engagement in fabrication and pipe laying work.
- e. All pipe lines are to be completely cleaned free of rust, coatings and dirt on the inside and outside prior to fabrication. The welding procedure for the weld joints will be issued by BHEL.
- f. All the pipe line is to be properly welded to withstand the required pressure (8.2 Kgf/cm²), ensuring zero leaks and proper penetration as per the instruction of BHEL Supervisor. The pipe line is to be fabricated and erected as per the required routing for interconnection with succeeding and proceeding pipe lines.
- g. All the pipe lines are to be properly supported and clamped at required locations.
- h. Fabrication of the pipe line includes the installation of required bend's, T's, Reducer's, Flanges, Weld Nipples, etc. required as per site conditions. All pipe fittings will be of Schedule 40 rating. All threads will be of BSP standard. The Contractor shall erect/ install the pipe lines, flanges, valves etc. as per instructions of BHEL supervisor.
- i. Subsequent to the laying of the pipe lines, they are to be painted, hydro tested, installed with tapping points and pressure gauges as mentioned.

11) ISSUE OF MATERIALS

It will be in the scope of contractor to move the required materials from BHEL Stores to the erection site and for execution of work. The approximate distance from BHEL stores to the erection site will be 4kms. The contractor shall arrange his own Trailer, Prime Mover (Tractor), Crane with Lifting Tackles and required Manpower for the movement of materials from BHEL stores to the erection site.

12) HYDRO-TEST DETAILS

All pipe lines after being laid should be hydro tested at 12kgf/cm² and should be checked for leaks. All pipe lines should be installed with required vents and drains in the pipe lines for the hydro-test. Any leaks noticed should be corrected and the pipelines retested for any leakage. Subsequent to the completion of hydro-testing, the pipe lines should be completely vented, cleaned and dried before handing over for service.

13) PAINTING DETAILS

All pipe line are to be painted with one coat of primer\ zinc-phosphate primer (epoxy) and two coats of epoxy\PU paint (one coat before erection and one coat after erection) as per standard IS:2379 - 1990 (Colour Code for Identification of Pipe Lines). The pipe line should be marked with flow directions, medium being carried and colour band at necessary locations as per the instructions of BHEL Supervisor. The makes of paint shall be Berger/Asian Paints/Akzonoble/Dulux only.

CONTRACTOR'S SIGNATURE

14) SCOPE OF BHEL

- a. BHEL will supply all the Pipe Material required for the Pipe Laying free of cost.
- b. BHEL will supply angle material required for the fabrication of pipe supports free of cost.
- c. BHEL will supply the required welding electrodes for fabrication of the pipe line free of cost.
- d. BHEL will supply all T's, Elbows, Flanges for the fabrication and laying of Pipe Line free of cost.
- e. BHEL will supply all the Control Valves, Pressure Gauges, Tapping Manifolds and QRC's for installation in the Pipe Line System free of cost.
- f. BHEL will supply Electric Power and hydro test machine with Water at a Single Location in the Site free of cost. (Electrical Point will be provided at a location within 200m in circumference from work site, it will be in the contractor's scope to make arrangements for necessary cabling)

15) SCOPE OF CONTRACTOR

- a. The contractor should bring in their own tools and tackles including Three phase welding machine with electrode holder, cutting torch , cable, oxy-acetylene regulators with rubber hoses, brushes, ladders and lifting tackles necessary for the execution of the work.
- b. The contractor should bring their own Oxygen Gas (O2 Cylinders), Acetylene Gas (Acetylene Cylinders), gasket material (CAF), grease, thread seal, PTFE tape, fasteners (Metric Thread Nickel Coated; Make: TVS/Unifrax only), U-clamps (Stainless Steel), threaded weld nipples (for installation of 1" Valve and Pressure Gauges) and paints (Berger/Asian Paints/Akzonoble/Dulux only) required for the execution of above works.
- c. The Contractor should make their own arrangements for the requirement of mobile crane facility and vehicle required for the movement of material and the execution of the work.
- d. The Contractor should also bring necessary personal protective equipments like safety shoes, hand gloves so as to work safely.
- e. The contractor shall dispose the waste and scrap materials properly at the identified places as per the area supervisor instruction and maintain the work place cleanliness.
- f. All required Man Power for execution of the above work.

16) NOTE

- a. Attendance register should be maintained.
- b. The contractor may visit the site for acclimatization of work content prior to quoting.
- c. The contractor should quote in per meter basis for each pipe size and in No's for valves/pressure gauge as per the total work enclosed below (Price Bid Format).
- d. The contract will be awarded to a single contractor for all above works on Cumulative L1 basis.

CONTRACTOR'S SIGNATURE

- e. The contractor shall follow 5S principles in his operations.
- f. The contractor shall provide one year warranty for workmanship.
- g. The contractor should commit to all the above terms and conditions.

17) DELIVERY

The contractor has to complete the entire work within 120 days from the date of work order release.

18) VALIDITY OF THE OFFER

Validity of the offer shall be for a minimum period of THREE MONTHS from the date of opening of tenders.

19) PAYMENT

100% payment will be made on pro-rata basis for the actual completion of work. Bill maybe claimed for pipe lines that have been hydro-tested, cleaned, vented, leak checked, clamped, painted and handed over for service only.

20) TERMS AND CONDITIONS:

Contractor should meet PF and ESI as statutory requirements for their employees. Copies of PF and ESI codes certificate should be submitted along with offer.

21) EARNEST MONEY DEPOSIT

- a. **EMD: Rs 60,000/- (Sixty Thousand Rupees Only) should be submitted along with the offer.**
- b. Bidders who have already deposited One Time EMD of Rs. 2.00 lacs with BHEL are exempted from submission of EMD for this tender. However a copy of 'One Time EMD' at BHEL Trichy submitted shall be enclosed along with the Offer.
- c. EMD is to be paid in the form of Pay order or Demand Draft in favour of Bharat Heavy Electricals Limited, Tiruchirapalli and payable at Tiruchirapalli. No. other form of EMD remittance shall be acceptable to BHEL.
- d. In the case of unsuccessful bidders, the Earnest Money will be refunded to them after acceptance of tender by successful bidder. EMD shall not carry any Interest.

22) SECURITY DEPOSIT

- a. Security Deposit should be remitted by the successful tendered as below before starting the work.
 - i. Up to 10 Lacs = 10% of Order value
 - ii. Above 10 Lacs and up to 50 Lacs = 1 Lac + 7.5% of Order value of exceeding 10 Lacs
 - iii. Above 50 Lacs = 4 Lakhs+5% of Order value of Exceeding 50 Lacs.

CONTRACTOR'S SIGNATURE

- b. The security Deposit should be remitted before start of the work by the contractor either as Pay Order or Demand Draft in favour of BHEL.
- c. Local cheques of scheduled banks, subject to realization. Securities available from Post Offices such as National Savings Certificates, Kisan Vikas Patras etc. (Certificates should be held in the name of Contractor furnishing the security and duly pledged in favour of BHEL and discharged on the back).
- d. Fixed Deposit Receipt issued by Scheduled Banks / Public Financial Institutions as defined in the Companies Act. The FDR should be in the name of the contractor, A/C BHEL, duly discharged on the back.
- e. Security deposit can also be recovered at the rate of 10% from the running bills. However in such cases at least 50% of the Security Deposit should be remitted (either by cash/DD or Security deposit for maximum 50% of total SD) before start of the work and the balance 50% may be recovered from the running bills.
- f. EMD of the successful bidder shall be converted and adjusted against the Security Deposit excepting for such bidder who has remitted One Time EMD.
- g. The Security Deposit shall not carry any interest.

23) RETURN OF SECURITY DEPOSIT

If the contractor fully performs and completes the works in all respect to the entire satisfaction of BHEL, Security Deposit will be released to the contractor after deducting all costs of expenses of other amounts that are to be paid to BHEL

24) REGULAR WORKING HOURS

The services of contractor with required tools and machinery shall be made available for duration of eight (8) hours per day excluding one-hour break lunch/tea break. The regular working hours will usually be from 08:00 a.m. to 6:00 p.m. However, this shall be adjusted to suit the working hours of BHEL.

25) INSURANCE COVER FOR MEN & MATERIALS

The Contractor shall arrange necessary Insurance cover with appropriate Third Party Liability cover Personal Accident Policy as applicable for the workmen crew. If any accident/injury/loss occurs while erection of the crane, to any other persons/ public and the properties of BHEL/client/other agencies/third party, the contractor shall have to pay necessary compensation and other expense, so decided by the appropriate authorities.

26) ACCOMMODATION & LOCAL CONVEYANCE

Contractor has to make their own arrangement for accommodation, local transport and other amenities for their workmen.

27) SAFETY OF MEN, EQUIPMENT, MATERIAL AND ENVIRONMENT

CONTRACTOR'S SIGNATURE

- a. PPEs shall be provided by the contractor as per attachment with appropriate trade job has to be ensured by the contractor at the job site at all times as per BHEL procedure. List of PPE is enclosed in ANNEXURE-A
- b. Safe work permits should be obtained by the contractor for Work at height before starting the work. The Format is enclosed herewith .ANNEXURE-B
- c. The Contractor shall abide by the Safety Regulations applicable for the Site/Project. Contractors are also to ensure that their employees and workmen use safety equipments as stipulated in the Factories Act (Latest Revision) during the execution of the work. Failure to use safety equipment as required by BHEL Engineer will be a sufficient reason for issuance of memo, which shall become part of Safety evaluation of the contractor at the end of the Project. Also all site work may be suspended if it is found that the workmen are employing unsafe working practice and all the costs/losses incurred due to suspension of work shall be borne by contractor.
- d. The contractor shall submit report of all accidents, fires and property damage, dangerous occurrences to the authorized BHEL official immediately after such occurrence but in any case not later than twelve hours of the occurrence. Such report shall be furnished in the manner prescribed by BHEL and also to meet statutory requirement. Any injury sustained by any of the contractor's employees within the Project premises must be reported to BHEL supervisor and FIRST AID should be immediately administered. The Contractor shall be responsible for keeping and maintaining proper records of Accidents to his personnel. According to the Factory Act and the Employees state Insurance Act & regulation, any person sustaining any injury within the project premises and absenting himself from work for more than 46 hours, his accident report has to be sent to the respective Government Authorities. Therefore contractor shall inform the owner's representative such matter immediately for their needful action.

28) REVERSE AUCTION

BHEL reserves the right to go for a Reverse Auction (RA) or Opening the submitted Part-I Qualification cum Technical bid, which will be decided after technical evaluation.

29) GENERAL TERMS AND CONDITIONS OF RA. I.E. ON LINE BIDDING THROUGH THE INTERNET FOR THE PROPOSED REVERSE AUCTION,

- a. BHEL will engage the services of a service provider who will provide all necessary training and assistance before commencement of on line bidding on internet.
- b. BHEL will inform the vendor in writing in case of reverse auction, the details of Service Provider to enable them to contact & get trained.
- c. Business rules like event date, time, and Start price, bid decrement, extensions etc. also will be communicated through service provider for compliance.
- d. Vendors have to fax the Compliance form in the prescribed format (provided by Service provider) before start of Reverse auction. Without this, the vendor will not be eligible to participate in the event.

CONTRACTOR'S SIGNATURE

- e. BHEL will provide the calculation sheet (e.g., EXCEL sheet) which will help to arrive at “Total Cost to BHEL” like Mobilisation Charge, Demobilisation charge, Hiring Charges, Service Tax for Services and loading factors (for non-compliance to BHEL standard Commercial terms & conditions) for each of the vendor to enable them to fill-in the price and keep it ready for keying in during the Auction.
- f. Reverse auction will be conducted on scheduled date & time.
- g. At the end of Reverse Auction event, the lowest bidder value will be known on the network.
- h. The lowest bidder has to Fax the duly signed Filled-in prescribed format as provided on case-to-case basis to BHEL through Service provider within 24 hours of Auction without fail.
- i. Any variation between the on-line bid value and the signed document will be considered as sabotaging the tender process and will invite disqualification of vendor to conduct business with BHEL as per prevailing procedure.
- j. In case BHEL decides not to go for Reverse Auction procedure for this tender enquiry, the Price bids and price impacts, if any, already submitted and available with BHEL shall be opened as per BHEL’s standard practice.

For any queries / clarifications the bidders may contact us through FAX NO. +91 431 2521416 or through e-mail: esalai@bheltry.co.in

CONTRACTOR’S SIGNATURE

ANNEXURE “A” to POINT No. 10.7.1**I. Personal Protective Equipment Recommended for Pipe Line Fabrication and Erection Work**

| Sl. No. | Job/Trade | PPE Recommended |
|---------|--------------------------|--|
| 1. | Arc welder | Leather gloves Leather apron Spectacle goggles Hand shield Filter lens 11-14 Leather leg guard Safety boots slip in type |
| 2. | Gas welder Gas | welding goggles Leather gloves Safety shoes |
| 3. | Painter | PVC gloves Light fume respirator Safety shoes Barrier cream Spectacle goggles |
| 4. | Fitter / General | Leather gloves Safety shoes Spectacle goggles |
| 5. | Crane operator | Safety shoes Canvas gloves Spectacle goggles |
| 6. | Rigger | Leather gloves Safety helmet Safety shoes Spectacle goggles |
| 7. | Unskilled / semi skilled | Leather gloves Worker Safety shoes Spectacle goggles Plastic face shield |
| 8. | Other Employees | Safety shoes Spectacle goggles |

CONTRACTOR'S SIGNATURE


II. Personal Protective Equipment Recommended for Hazardous Operations

| Sl. No. | Job/Trade | PPE Recommended |
|---------|-----------------|---|
| 1. | High Noise Area | Ear Plug / Ear Muff |
| 2. | Work at height | Gloves Safety Belt Helmet Safety Shoes |

Note: Contract Workers, Engineers, Supervisors and proprietors should wear Pant & Shoes while entering the factory premises.

CONTRACTOR'S SIGNATURE

ANNEXURE-B – SAFE WORK PERMIT

| | | | |
|--|---|------------------|--|
|  310-015/A | <h2 style="margin: 0;">SAFE WORK PERMIT</h2> <p style="margin: 0;">(WORK AT HEIGHT INCLUDING ROOF LIGHT MAINTENANCE & FURNACE WORK)</p> | | |
| PERMIT INITIATION | | | |
| M & S Control No. | | Date | |
| Description of Work | | | |
| Area of Work | | | |
| Period of Work | From | To | |
| | | | |
| Time | From | To | |
| | AM/PM | AM/PM | |
| Name of Executing Agency / Contractor Reference | | | |
| Name of the persons engaged : | | | |
| | | | |
| Date: | Signature of Initiating area's Executive | Name Seal | |
| PERMIT CLEARANCE | | | |
| PRODUCTION DEPARTMENT SHUT DOWN / INTIMATION | | | |
| | | | |
| Date: | Signature | Name Seal | |
| CRANES / M& S DEPARTMENT | | | |
| | | | |
| Date: | Signature | Name Seal | |
| SAFETY MANAGEMENT | | | |
| | | | |
| Date: | Signature | Name Seal | |

CONTRACTOR'S SIGNATURE

| | | |
|---|--------------------------|--------------------------|
| PERMIT WITHDRAWAL | | |
| EXECUTING DEPARTMENT | | |
| The work has been completed. Men and materials withdrawn. Intimation given to production. | | |
| Date: | Signature of Executive | Name Seal |
| CRANES / M & S DEPARTMENT | | |
| Withdrawal of permit is acceptable. | | |
| Date: | Signature | Name Seal |
| SAFETY MANAGEMENT | | |
| Withdrawal of permit is acceptable | | |
| Date: | Signature | Name Seal |
| <p>SAFETY INSTRUCTIONS:</p> <ul style="list-style-type: none"> ❖ Use appropriate PPE (Safety belts, Helmets, Goggles etc.) ❖ Post a 'Look-out man' with red flag and whistle. ❖ Provide safe access ❖ Provide warning ❖ All loose materials / tools to be taken out. ❖ Permit will be valid for only one week (Monday to Saturday ; Separate Permit to be obtained for Sunday). | | |
| <u>TO BE ENSURED BY THE INITIATING DEPARTMENT (Put tick mark in the relevant box)</u> | | |
| | ENSURED | NOT REQD |
| 1. Necessary FIRE PREVENTION measures taken | <input type="checkbox"/> | <input type="checkbox"/> |
| 2. Informed FIRE SERVICE | <input type="checkbox"/> | <input type="checkbox"/> |
| 3. Alert other employees in the nearby area | <input type="checkbox"/> | <input type="checkbox"/> |
| 4. Safe Access available / Provided | <input type="checkbox"/> | <input type="checkbox"/> |
| 5. Use of SAFETY BELT | <input type="checkbox"/> | <input type="checkbox"/> |
| 6. Wearing of HELMET | <input type="checkbox"/> | <input type="checkbox"/> |
| 7. Use of SAFETY GOGGLES | <input type="checkbox"/> | <input type="checkbox"/> |
| 8. Use of RESPIRATOR | <input type="checkbox"/> | <input type="checkbox"/> |
| 9. 'LOOK-OUT' man | <input type="checkbox"/> | <input type="checkbox"/> |

CONTRACTOR'S SIGNATURE

PART- II**PRICE BID**

Name of work: Fabrication and laying of various sizes overhead Compressed Air pipe lines from distribution point to newly constructed shop floor.

Schedule of Rate

| Sl. No. | Work | Quantity | Unit | Rate Per Unit | Total Value |
|---------|---|----------|-------|---------------|-------------|
| 01 | Main Header Pipe of Diameter 12" | 240 | Meter | | |
| 02 | Sub Header Pipe of Diameter 8" | 350 | Meter | | |
| 03 | Bay Distribution Header Pipe of Diameter 4" | 1840 | Meter | | |
| 04 | Vertical Drop Line of Diameter 1" | 1400 | Meter | | |
| 05 | Control Valves for Building Isolation 12" | 2 | No | | |
| 06 | Control Valves for Building Isolation 8" | 1 | No | | |
| 07 | Control Valves for Bay Isolation 4" | 18 | No | | |
| 08 | Control Valve\Tapping Point for End Points | 215 | No | | |
| 09 | Installation of Pressure Gauges | 10 | No | | |

Contractors should fill the rate in the above format only, sign & seal and place in a Sealed Cover separately by super scribing as PART-II/PRICE BID with Name of work, Tender ref no., due date on the Cover

Applicable taxes shall be separately mentioned in the offer.

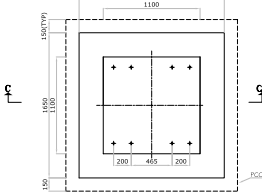
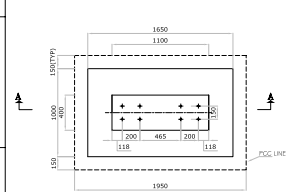
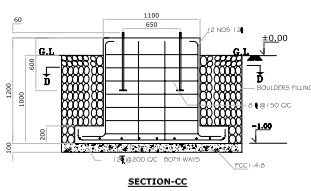
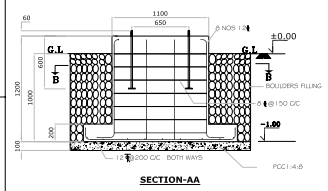
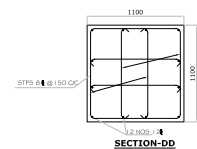
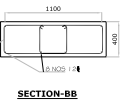
Contract will be issued to a Technically qualified Single contractor for all the above works on cumulative L1 basis.

-----ooo00ooo-----

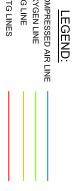
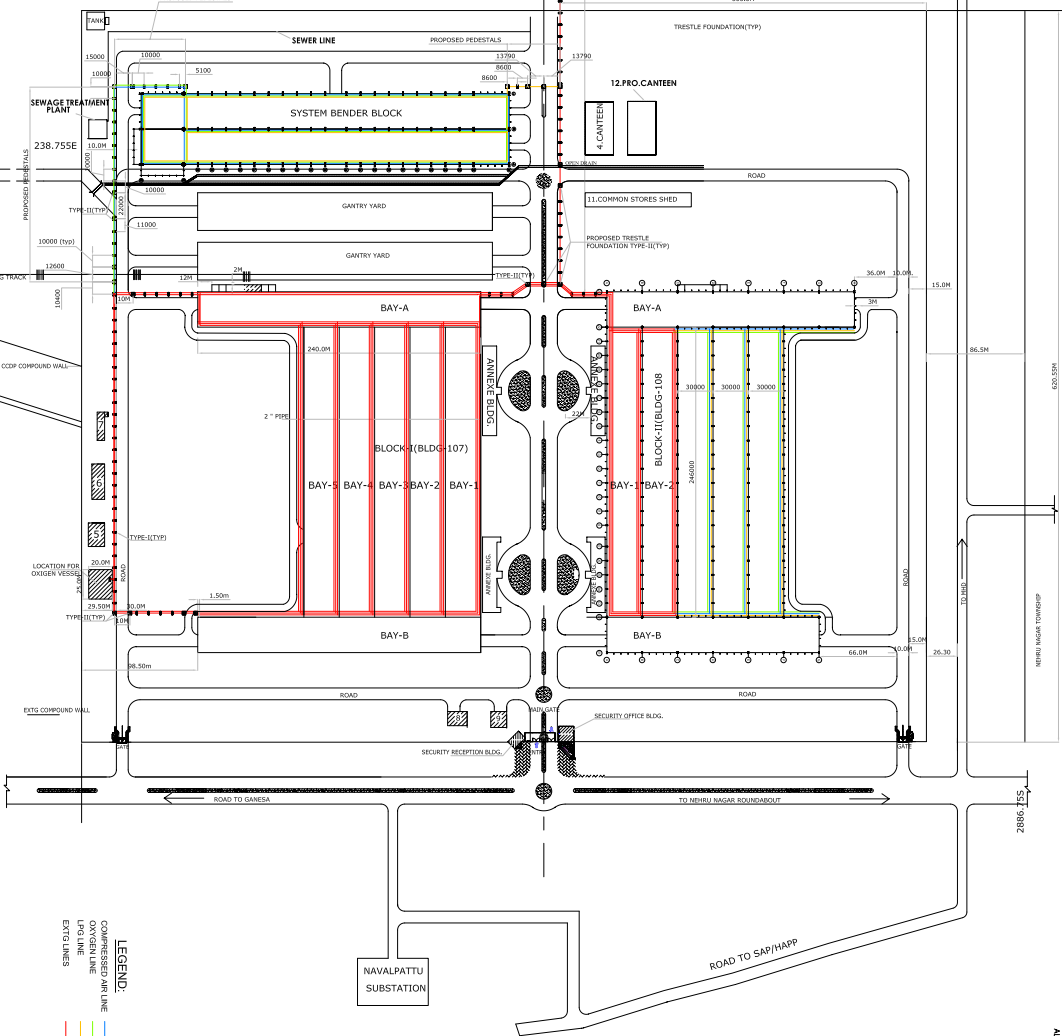
CONTRACTOR'S SIGNATURE

FOR TENDER PUPOSE ONLY

PROJECT NO. CEG:TP-00:364 100



- NOTES:**
1. ALL DIMENSIONS ARE IN METERS UNLESS OTHERWISE SPECIFIED
 2. DO NOT SCALE THE DRAWING FOLLOW WRITTEN DIMENSIONS ONLY
 3. SECURITY
 4. CANTEN
 5. COMPRESSOR BLDG.
 6. D.G SET
 7. SUB-STATION
 8. OCCUPATIONAL HEALTH CENTRE
 9. FIRE STATION
 10. SYSTEM BENDER BLOCK



- NOTES:**
1. ALL DIMENSIONS ARE IN MM AND LEVELS ARE 'R'
 2. CONCRETE GRADE M20
 3. PART-1: 20mm
 4. PART-2: 20mm
 5. PART-3: 20mm
 6. PART-4: 20mm
 7. PART-5: 20mm
 8. PART-6: 20mm
 9. PART-7: 20mm
 10. PART-8: 20mm
 11. PART-9: 20mm
 12. PART-10: 20mm
 13. PART-11: 20mm
 14. PART-12: 20mm
 15. PART-13: 20mm
 16. PART-14: 20mm
 17. PART-15: 20mm
 18. PART-16: 20mm
 19. PART-17: 20mm
 20. PART-18: 20mm
 21. PART-19: 20mm
 22. PART-20: 20mm
 23. PART-21: 20mm
 24. PART-22: 20mm
 25. PART-23: 20mm
 26. PART-24: 20mm
 27. PART-25: 20mm
 28. PART-26: 20mm
 29. PART-27: 20mm
 30. PART-28: 20mm
 31. PART-29: 20mm
 32. PART-30: 20mm
 33. PART-31: 20mm
 34. PART-32: 20mm
 35. PART-33: 20mm
 36. PART-34: 20mm
 37. PART-35: 20mm
 38. PART-36: 20mm
 39. PART-37: 20mm
 40. PART-38: 20mm
 41. PART-39: 20mm
 42. PART-40: 20mm
 43. PART-41: 20mm
 44. PART-42: 20mm
 45. PART-43: 20mm
 46. PART-44: 20mm
 47. PART-45: 20mm
 48. PART-46: 20mm
 49. PART-47: 20mm
 50. PART-48: 20mm
 51. PART-49: 20mm
 52. PART-50: 20mm
 53. PART-51: 20mm
 54. PART-52: 20mm
 55. PART-53: 20mm
 56. PART-54: 20mm
 57. PART-55: 20mm
 58. PART-56: 20mm
 59. PART-57: 20mm
 60. PART-58: 20mm
 61. PART-59: 20mm
 62. PART-60: 20mm
 63. PART-61: 20mm
 64. PART-62: 20mm
 65. PART-63: 20mm
 66. PART-64: 20mm
 67. PART-65: 20mm
 68. PART-66: 20mm
 69. PART-67: 20mm
 70. PART-68: 20mm
 71. PART-69: 20mm
 72. PART-70: 20mm
 73. PART-71: 20mm
 74. PART-72: 20mm
 75. PART-73: 20mm
 76. PART-74: 20mm
 77. PART-75: 20mm
 78. PART-76: 20mm
 79. PART-77: 20mm
 80. PART-78: 20mm
 81. PART-79: 20mm
 82. PART-80: 20mm
 83. PART-81: 20mm
 84. PART-82: 20mm
 85. PART-83: 20mm
 86. PART-84: 20mm
 87. PART-85: 20mm
 88. PART-86: 20mm
 89. PART-87: 20mm
 90. PART-88: 20mm
 91. PART-89: 20mm
 92. PART-90: 20mm
 93. PART-91: 20mm
 94. PART-92: 20mm
 95. PART-93: 20mm
 96. PART-94: 20mm
 97. PART-95: 20mm
 98. PART-96: 20mm
 99. PART-97: 20mm
 100. PART-98: 20mm
 101. PART-99: 20mm
 102. PART-100: 20mm

| | |
|---|---------------------------------------|
| <p>CAUTION: The information on this drawing is the property of Bharat Heavy Electricals Ltd. It must not be used for any other purpose without the written consent of the company.</p> | |
| <p>TYPE OF PRODUCT: 15000 MW CAPACITY AUGMENTATION WORK</p> | <p>CLIENT/PROJECT: NEW PLANT AREA</p> |
| <p>DESIGNER: [Signature]</p> | <p>CHECKER: [Signature]</p> |
| <p>DATE: 15/08/2024</p> | <p>SCALE: 1:1</p> |
| <p>PROJECT NO: CEG:TP-00:364</p> | <p>DRW NO: 100</p> |

FOR TENDER PUPOSE ONLY

ALL DIMENSIONS ARE IN MILLIMETERS