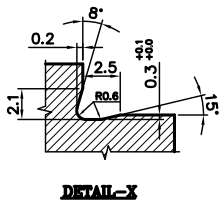
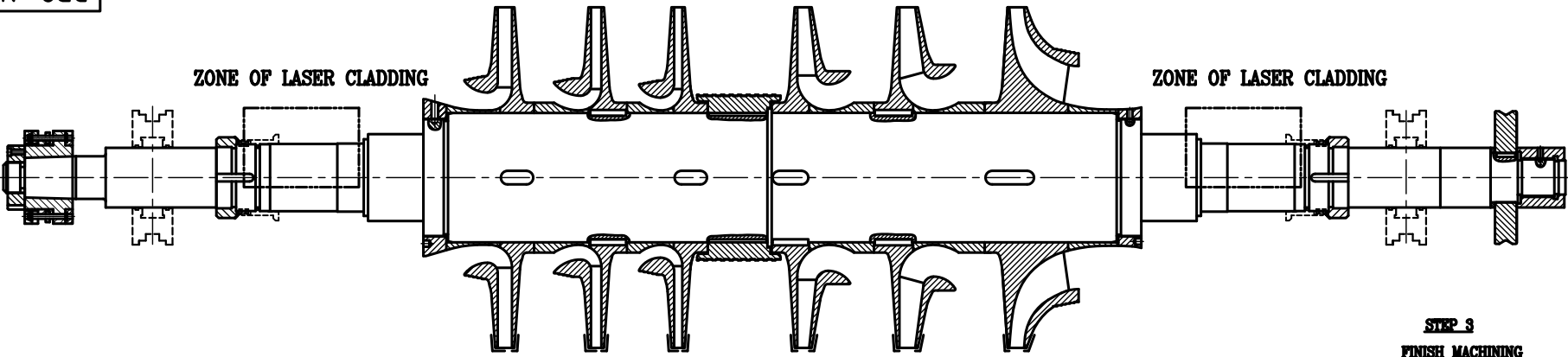


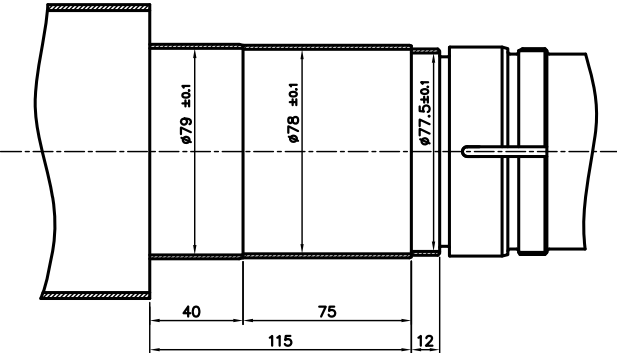
DRG. NO. 3-332-09-04022

SHT. OF

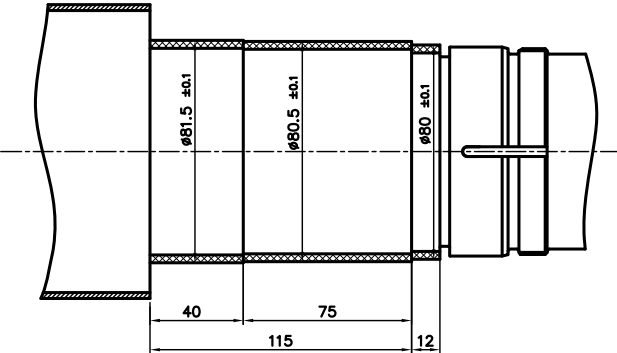
1.6/0.8/0.4



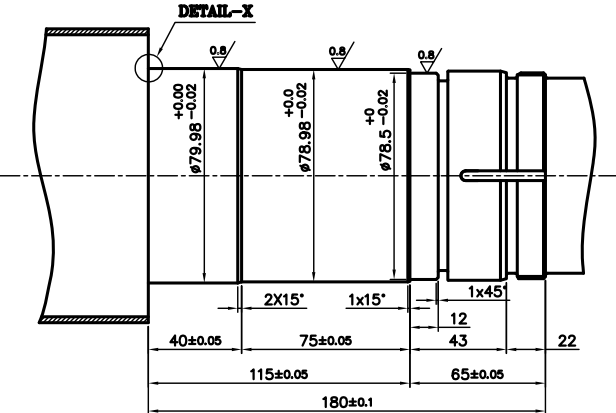
STEP 1
PREMACHINING BEFORE LASER CLADDING
DRY GAS SEAL ZONE (T.B. SIDE)



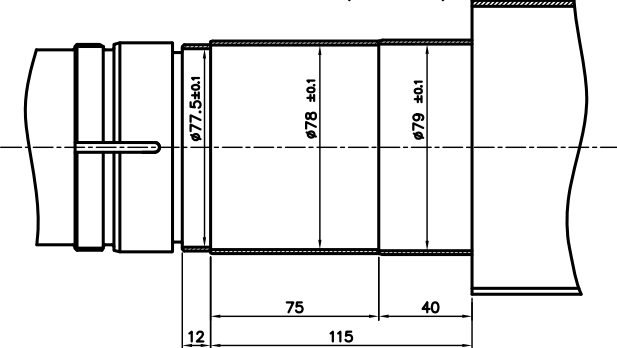
STEP 2
LASER CLADDING
DRY GAS SEAL ZONE (T.B. SIDE)



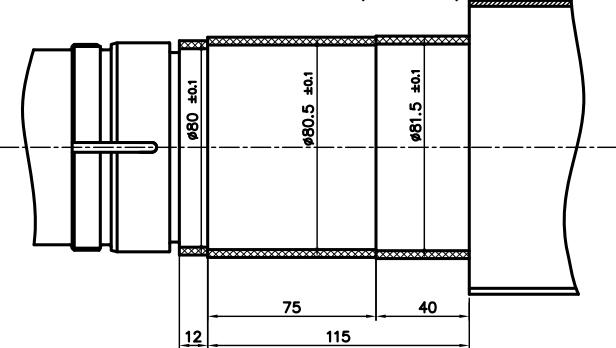
STEP 3
FINISH MACHINING
DRY GAS SEAL ZONE (T.B. SIDE)



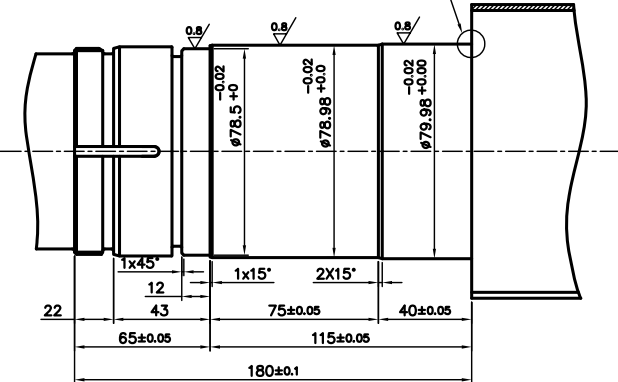
STEP 1
PREMACHINING BEFORE LASER CLADDING
DRY GAS SEAL ZONE (O.T.B. SIDE)



STEP 2
LASER CLADDING
DRY GAS SEAL ZONE (O.T.B. SIDE)



STEP 3
FINISH MACHINING
DRY GAS SEAL ZONE (O.T.B. SIDE)



NOTE:-
1) REFER SPEC.TC72023 FOR LASER CLADDING.

TYPE OF PRODUCT OR NAME OF CUSTOMER/PROJECT					IOCL PANIPAT 2MCL356				
BHARAT HEAVY ELECTRICALS LTD. HYDERABAD					DRN.	NAME	SIGN.	DATE	NO.OF VAR.
					CHD.	PV		17.03.21	
					APPD.	RAMU		18.03.21	NA
						NEMA		18.03.21	
DEPT.	UNTOL. DIMS. GR. Ø/M/ƒ	SCALE	WEIGHT (KG)	REF. TO ASSY. DRG.	ITEM NO.	NO.OF ITEMS			
CODE		NA	NA						
TITLE					CARD CODE	DRAWING NO. 3-332-09-04022			
DGS AREA REPAIR (SHAFT 2MCL356)						REV. 00			
						SHT. No 1	NO. OF SHT. 1		

INVENTORY NO

SIGN. AND DATE

REF. DRG. NO.

COMPUTER FILE NAME

THE INFORMATION ON THIS DOCUMENT IS THE PROPERTY OF BHARAT HEAVY ELECTRICALS LIMITED. IT MUST NOT BE USED DIRECTLY OR INDIRECTLY IN ANY WAY DETRIMENTAL TO THE INTEREST OF THE COMPANY

GENERAL DIMENSIONAL LIMITS, FITS & TOLERANCES AS PER HY0230261