



Bharat Heavy Electricals Limited

(High Pressure Boiler Plant)

Tiruchirappalli – 620014, TAMIL NADU, INDIA

An ISO 9001
Company

MATERIALS MANAGEMENT / CAPITAL EQUIPMENT

ENQUIRY

Phone: +91 431 257 79 38
Fax : +91 431 252 07 19
Email : tvenkat@bheltry.co.in
Web : www.bhel.com

| Enquiry Number: | Enquiry Date: | Due date for submission of quotation: |
|-----------------|---------------|---------------------------------------|
| 2621000145 | 25.11.2010 | 27.12.2010 |

You are requested to quote the Enquiry number date and due date in all your correspondences. This is only a request for quotation and not an order

Please note that under any circumstances both **delayed offer** and **late offers** will not be considered. Hence vendors are requested to ensure that the offer is reaching physically our office before 14.00 hrs on the date of tender opening.

| Item | Description | Quantity | Delivery Schedule |
|------|--|------------|-------------------|
| 10 | Supplying the Gantrail weldable base cup type adjustable crane Rail clip of approved brand and as per drg. Enclosed including supply of suitable captive bolts, studs, nuts, spring washer, punched washer and integral vulcanized rubber nose for fixing EOT crane rail and Gantry rail. Before effecting supply sample approval is to be obtained from BHEL engineers. Commercial conditions applicable (to be downloaded from web site www.bhel.com or http://tenders.gov.in) | 10,800 Set | 25.02.2011 |
| 20 | Cast Iron spun pipe of following Dia Socket and spigot type LA class Conforming to IS :1536/Latest in Standard length of 5.50m suitable For lead joint - 200 mm dia Commercial conditions applicable (to be downloaded from web site www.bhel.com or http://tenders.gov.in) | 350 Nos | 30.04.2011 |
| 30 | Cast Iron spun pipe of following Dia Socket and spigot type LA class Conforming to IS :1536/Latest in Standard length of 5.50m suitable For lead joint - 150 mm dia Commercial conditions applicable (to be downloaded from web site www.bhel.com or http://tenders.gov.in) | 180 Nos | 30.04.2011 |



Bharat Heavy Electricals Limited

(High Pressure Boiler Plant)

Tiruchirappalli – 620014, TAMIL NADU, INDIA

An ISO 9001
Company

MATERIALS MANAGEMENT / CAPITAL EQUIPMENT

| Item | Description | Quantity | Delivery Schedule |
|------|---|----------|-------------------|
| 40 | Cast Iron Flanged pipe fittings conforming to IS:1538/Latest with ISI mark for Fire Hydrant - 200 mm dia D/F short pipe 2.75 m length Commercial conditions applicable (to be downloaded from web site www.bhel.com or http://tenders.gov.in) | 20 Nos | 30.04.2011 |
| 50 | Cast Iron Flanged pipe fittings conforming to IS:1538/Latest with ISI mark for Fire Hydrant - 200 mm dia D/F short pipe 1 m length Commercial conditions applicable (to be downloaded from web site www.bhel.com or http://tenders.gov.in) | 5 Nos | 30.04.2011 |
| 60 | Cast Iron Flanged pipe fittings conforming to IS:1538/Latest with ISI mark for Fire Hydrant - 200 mm dia D/F short pipe 0.6 m length Commercial conditions applicable (to be downloaded from web site www.bhel.com or http://tenders.gov.in) | 5 Nos | 30.04.2011 |
| 70 | Cast Iron Flanged pipe fittings conforming to IS:1538/Latest with ISI mark for Fire Hydrant - 200 mm dia D/F short pipe 0.5 m length Commercial conditions applicable (to be downloaded from web site www.bhel.com or http://tenders.gov.in) | 5 Nos | 30.04.2011 |
| 80 | Cast Iron Flanged pipe fittings conforming to IS:1538/Latest with ISI mark for Fire Hydrant - 200 mm dia D/F short pipe 0.3 m length Commercial conditions applicable (to be downloaded from web site www.bhel.com or http://tenders.gov.in) | 5 Nos | 30.04.2011 |
| 90 | Cast Iron Flanged pipe fittings conforming to IS:1538/Latest with ISI mark for Fire Hydrant - 150 mm dia D/F short pipe 2.75 m length Commercial conditions applicable (to be downloaded from web site www.bhel.com or http://tenders.gov.in) | 20 Nos | 30.04.2011 |
| 100 | Cast Iron Flanged pipe fittings conforming to IS:1538/Latest with ISI mark for Fire Hydrant - 150 mm dia D/F short pipe 1 m length Commercial conditions applicable (to be downloaded from web site www.bhel.com or http://tenders.gov.in) | 5 Nos | 30.04.2011 |



Bharat Heavy Electricals Limited

(High Pressure Boiler Plant)

Tiruchirappalli – 620014, TAMIL NADU, INDIA

An ISO 9001
Company

MATERIALS MANAGEMENT / CAPITAL EQUIPMENT

| Item | Description | Quantity | Delivery Schedule |
|------|--|----------|-------------------|
| 110 | Cast Iron Flanged pipe fittings conforming to IS:1538/Latest with ISI mark for Fire Hydrant - 150 mm dia D/F short pipe 0.6 m length Commercial conditions applicable (to be downloaded from web site www.bhel.com or http://tenders.gov.in) | 5 Nos | 30.04.2011 |
| 120 | Cast Iron Flanged pipe fittings conforming to IS:1538/Latest with ISI mark for Fire Hydrant - 150 mm dia D/F short pipe 0.5 m length Commercial conditions applicable (to be downloaded from web site www.bhel.com or http://tenders.gov.in) | 5 Nos | 30.04.2011 |
| 130 | Cast Iron Flanged pipe fittings conforming to IS:1538/Latest with ISI mark for Fire Hydrant - 150 mm dia D/F short pipe 0.3 m length Commercial conditions applicable (to be downloaded from web site www.bhel.com or http://tenders.gov.in) | 5 Nos | 30.04.2011 |
| 140 | Cast Iron Flanged pipe fittings conforming to IS:1538/Latest with ISI mark for Fire Hydrant - D/F 80 mm dia short pipe 500 mm length Commercial conditions applicable (to be downloaded from web site www.bhel.com or http://tenders.gov.in) | 10 Nos | 30.04.2011 |
| 150 | Pig lead (Chalking Lead) Confirming to IS 782-1978 in 25kg bar with 100% purity Commercial conditions applicable (to be downloaded from web site www.bhel.com or http://tenders.gov.in) | 2000 Kgs | 30.04.2011 |



Bharat Heavy Electricals Limited

(High Pressure Boiler Plant)

Tiruchirappalli – 620014, TAMIL NADU, INDIA

An ISO 9001
Company

MATERIALS MANAGEMENT / CAPITAL EQUIPMENT

| Item | Description | Quantity | Delivery Schedule |
|------|---|----------|-------------------|
| 160 | Cast Iron Double Flanged Sluice valve confirming to IS14846/2000 Class-I with maximum working pressure of 10kg/sq.cm. Spindle Nut of Gun metal inside non raising Solid Forged Bronze spindle fitted with C.I.Caps with hand wheel and anticlockwise direction for opening flanged faced and drilled (as per ISS) body tested to 20kg/sq.cm and seat to 10kg/sq.cm with ISI mark. All moving parts to be greased for easy operation of valves. All fixing bolts in the stuffing box the nuts at top and the joints to be fixed with 2 layers of rubber gasket for full width of valve to be covered - 200mm dia Commercial conditions applicable (to be downloaded from web site www.bhel.com or http://tenders.gov.in) | 10 Nos | 30.04.2011 |
| 170 | Cast Iron Double Flanged Sluice valve confirming to IS14846/2000 Class-I with maximum working pressure of 10kg/sq.cm. Spindle Nut of Gun metal inside non raising Solid Forged Bronze spindle fitted with C.I.Caps with hand wheel and anticlockwise direction for opening flanged faced and drilled (as per ISS) body tested to 20kg/sq.cm and seat to 10kg/sq.cm with ISI mark. All moving parts to be greased for easy operation of valves. All fixing bolts in the stuffing box the nuts at top and the joints to be fixed with 2 layers of rubber gasket for full width of valve to be covered - 150mm dia Commercial conditions applicable (to be downloaded from web site www.bhel.com or http://tenders.gov.in) | 5 Nos | 30.04.2011 |
| 180 | Cast Iron Flanged standard fitting for pressure pipe of heavy class with ISI mark conforming to IS: 1538 / Latest - 200X200X200 all Flanged Tee Commercial conditions applicable (to be downloaded from web site www.bhel.com or http://tenders.gov.in) | 5 Nos | 30.04.2011 |
| 190 | Cast Iron Flanged standard fitting for pressure pipe of heavy class with ISI mark conforming to IS: 1538 / Latest - 150X150X150 all Flanged Tee Commercial conditions applicable (to be downloaded from web site www.bhel.com or http://tenders.gov.in) | 5 Nos | 30.04.2011 |



Bharat Heavy Electricals Limited

(High Pressure Boiler Plant)

Tiruchirappalli – 620014, TAMIL NADU, INDIA

An ISO 9001
Company

MATERIALS MANAGEMENT / CAPITAL EQUIPMENT

| Item | Description | Quantity | Delivery Schedule |
|------|---|----------|-------------------|
| 200 | Cast Iron Flanged standard fitting for pressure pipe of heavy class with ISI mark conforming to IS: 1538 / Latest - 200 mm dia Flanged 90 degree bend Commercial conditions applicable (to be downloaded from web site www.bhel.com or http://tenders.gov.in) | 10 Nos | 30.04.2011 |
| 210 | Cast Iron Flanged standard fitting for pressure pipe of heavy class with ISI mark conforming to IS: 1538 / Latest - 150 mm dia Flanged 90 degree bend Commercial conditions applicable (to be downloaded from web site www.bhel.com or http://tenders.gov.in) | 10 Nos | 30.04.2011 |
| 220 | Cast Iron Flanged standard fitting for pressure pipe of heavy class with ISI mark conforming to IS: 1538 / Latest - 200 mm dia duck foot bend Commercial conditions applicable (to be downloaded from web site www.bhel.com or http://tenders.gov.in) | 5 Nos | 30.04.2011 |
| 230 | Cast Iron Flanged standard fitting for pressure pipe of heavy class with ISI mark conforming to IS: 1538 / Latest - 150 mm dia duck foot bend Commercial conditions applicable (to be downloaded from web site www.bhel.com or http://tenders.gov.in) | 5 Nos | 30.04.2011 |
| 240 | Cast Iron Flanged standard fitting for pressure pipe of heavy class with ISI mark conforming to IS: 1538 / Latest - 200 mm dia flanged socket Commercial conditions applicable (to be downloaded from web site www.bhel.com or http://tenders.gov.in) | 10 Nos | 30.04.2011 |
| 250 | Cast Iron Flanged standard fitting for pressure pipe of heavy class with ISI mark conforming to IS: 1538 / Latest - 150 mm dia flanged socket Commercial conditions applicable (to be downloaded from web site www.bhel.com or http://tenders.gov.in) | 10 Nos | 30.04.2011 |
| 260 | Cast Iron Flanged standard fitting for pressure pipe of heavy class with ISI mark conforming to IS: 1538 / Latest - 200 mm dia Flanged spigot Commercial conditions applicable (to be downloaded from web site www.bhel.com or http://tenders.gov.in) | 20 Nos | 30.04.2011 |



Bharat Heavy Electricals Limited

(High Pressure Boiler Plant)

Tiruchirappalli – 620014, TAMIL NADU, INDIA

An ISO 9001
Company

MATERIALS MANAGEMENT / CAPITAL EQUIPMENT

| Item | Description | Quantity | Delivery Schedule |
|------|--|----------|-------------------|
| 270 | Cast Iron Flanged standard fitting for pressure pipe of heavy class with ISI mark conforming to IS: 1538 / Latest - 150 mm dia Flanged spigot Commercial conditions applicable (to be downloaded from web site www.bhel.com or http://tenders.gov.in) | 20 Nos | 30.04.2011 |
| 280 | Cast Iron Flanged standard fitting for pressure pipe of heavy class with ISI mark conforming to IS: 1538 / Latest - 150X200 mm D/F taper Commercial conditions applicable (to be downloaded from web site www.bhel.com or http://tenders.gov.in) | 20 Nos | 30.04.2011 |
| 290 | Cast Iron Flanged standard fitting for pressure pipe of heavy class with ISI mark conforming to IS: 1538 / Latest - 80 mm dia D/F Duck foot bend Commercial conditions applicable (to be downloaded from web site www.bhel.com or http://tenders.gov.in) | 10 Nos | 30.04.2011 |
| 300 | Cast Iron Flanged standard fitting for pressure pipe of heavy class with ISI mark conforming to IS: 1538 / Latest - 150X80 mm D/F taper Commercial conditions applicable (to be downloaded from web site www.bhel.com or http://tenders.gov.in) | 10 Nos | 30.04.2011 |
| 310 | Cast Iron Flanged standard fitting for pressure pipe of heavy class with ISI mark conforming to IS: 1538 / Latest - 200X200X80 all Flanged Tee Commercial conditions applicable (to be downloaded from web site www.bhel.com or http://tenders.gov.in) | 10 Nos | 30.04.2011 |
| 320 | Cast Iron Flanged standard fitting for pressure pipe of heavy class with ISI mark conforming to IS: 1538 / Latest - 200X200X150 all Flanged Tee Commercial conditions applicable (to be downloaded from web site www.bhel.com or http://tenders.gov.in) | 5 Nos | 30.04.2011 |
| 330 | Cast Iron Flanged standard fitting for pressure pipe of heavy class with ISI mark conforming to IS: 1538 / Latest - 150X150X80 all Flanged Tee Commercial conditions applicable (to be downloaded from web site www.bhel.com or http://tenders.gov.in) | 10 Nos | 30.04.2011 |



Bharat Heavy Electricals Limited

(High Pressure Boiler Plant)

Tiruchirappalli – 620014, TAMIL NADU, INDIA

An ISO 9001
Company

MATERIALS MANAGEMENT / CAPITAL EQUIPMENT

| Item | Description | Quantity | Delivery Schedule |
|------|---|----------|-------------------|
| 340 | Cast Iron Flanged standard fitting for pressure pipe of heavy class with ISI mark conforming to IS: 1538 / Latest - 200X80 mm D/F taper Commercial conditions applicable (to be downloaded from web site www.bhel.com or http://tenders.gov.in) | 10 Nos | 30.04.2011 |
| 350 | Cast Iron Flanged standard fitting for pressure pipe of heavy class with ISI mark conforming to IS: 1538 / Latest - Dummy flange plat conforming to IS 1538-2001 - 200 mm dia Commercial conditions applicable (to be downloaded from web site www.bhel.com or http://tenders.gov.in) | 5 Nos | 30.04.2011 |
| 360 | Cast Iron Flanged standard fitting for pressure pipe of heavy class with ISI mark conforming to IS: 1538 / Latest - Dummy flange plat conforming to IS 1538-2001 - 150 mm dia Commercial conditions applicable (to be downloaded from web site www.bhel.com or http://tenders.gov.in) | 5 Nos | 30.04.2011 |
| 370 | Cast Iron Flanged standard fitting for pressure pipe of heavy class with ISI mark conforming to IS: 1538 / Latest - CI flanged socket pipe Tail piece conforming to IS 7181 of latest - 150X1.0 m Commercial conditions applicable (to be downloaded from web site www.bhel.com or http://tenders.gov.in) | 10 Nos | 30.04.2011 |
| 380 | Cast Iron Flanged standard fitting for pressure pipe of heavy class with ISI mark conforming to IS: 1538 / Latest - CI flanged socket pipe Tail piece conforming to IS 7181 of latest - 200x1.0 m Commercial conditions applicable (to be downloaded from web site www.bhel.com or http://tenders.gov.in) | 10 Nos | 30.04.2011 |



Bharat Heavy Electricals Limited

(High Pressure Boiler Plant)

Tiruchirappalli – 620014, TAMIL NADU, INDIA

An ISO 9001
Company

MATERIALS MANAGEMENT / CAPITAL EQUIPMENT

| Item | Description | Quantity | Delivery Schedule |
|------|--|----------|-------------------|
| 390 | Double air valve of 80 mm size having drilled flange to suit the CI pipe flange as per IS 1538 with isolating sluice valve for working pressure of 10 kg/sq.cm and test pressure of 16 kg/cm ² material consist of body cover and cowls make of cast iron IS 210 gun metal for valve, seat, nut, small orifice nipple spindle of STA IS 410 Commercial conditions applicable (to be downloaded from web site www.bhel.com or http://tenders.gov.in) | 4 Nos | 30.04.2011 |
| 400 | Supply of paddle wheel flow meters for the following sizes of the pipes and specification, to measure the flow of water Flow Range: 0.5m ³ / sec. to 5m ³ /sec. Max. op. Temp : 70 deg.c Max. op. Pressure : 10Kg./sq.cm Power supply : 230V- AC/24V-DC Pressure drop : less than 0.1Kg./sq.cm Materials of Construction: Transducer Housing : POLY PROPYLENE Rings : NEOPRENE Shaft: SS316 / HASTALLOY C / PVDF Rotar : PVDF Output : 2-Line 16 Character Backlite LCD Display To Register : Rate of flow in M ³ /Hr. : Total flow in M ³ Standard cable length : 10 meter Process connection : ABS TEE / PP water drilled as per BS 10 Table E/ANSI B 16.5 /SS Stub/ Glue on PVC Saddle - Flow meter For 200 mm dia Commercial conditions applicable (to be downloaded from web site www.bhel.com or http://tenders.gov.in) | 2 Nos | 30.04.2011 |



Bharat Heavy Electricals Limited

(High Pressure Boiler Plant)

Tiruchirappalli – 620014, TAMIL NADU, INDIA

An ISO 9001
Company

MATERIALS MANAGEMENT / CAPITAL EQUIPMENT

| Item | Description | Quantity | Delivery Schedule |
|------|--|----------|-------------------|
| 410 | <p>Supply of paddle wheel flow meters for the following sizes of the pipes and specification, to measure the flow of water Flow Range: 0.5m/ sec. to 5m /sec. Max. op. Temp : 70 deg.c Max. op. Pressure : 10Kg./sq.cm Power supply : 230V- AC/24V-DC Pressure drop : less than 0.1Kg./sq.cm Materials of Construction: Transducer Housing : POLY PROPYLENE O-Rings : NEOPRENE Shaft: SS316 / HASTALLOY C / PVDF Rotar : PVDF Output : 2-Line 16 Character Backlite LCD Display To Register : Rate of flow in M3 /Hr. : Total flow in M3 Standard cable length : 10 meter Process connection : ABS TEE / PP water drilled as per BS 10 Table E/ANSI B 16.5 /SS Stub/ Glue on PVC Saddle - Flow meter For 150 mm dia</p> <p>Commercial conditions applicable (to be downloaded from web site www.bhel.com or http://tenders.gov.in)</p> | 2 Nos | 30.04.2011 |
| 420 | <p>Fire hydrant valve, single outlet, SS 304, 75 mm NB, flanged inlet, SS 304 spindle, 63 mm female inlet, oblique outlet, complete with blank cap and chain. bearing IS :5290 mark, flange O.D 200 mm, PCD 160 mm, four 19 mm holes.</p> <p>Commercial conditions applicable (to be downloaded from web site www.bhel.com or http://tenders.gov.in)</p> | 5 Nos | 30.04.2011 |



Bharat Heavy Electricals Limited

(High Pressure Boiler Plant)

Tiruchirappalli – 620014, TAMIL NADU, INDIA

An ISO 9001
Company

MATERIALS MANAGEMENT / CAPITAL EQUIPMENT

| Item | Description | Quantity | Delivery Schedule |
|------|--|----------|-------------------|
| 430 | 3" (80 mm) dia Cast iron Double flanged Sluice valves conforming to IS 14846/2000 class -1 max working pressure 10 kg/sq.cm spindle nut of gun metal inside non-rising solid forged bronze spindle fitted with CI caps with hand wheel and anticlockwise direction for opening, flanged faced and drilled (as per ISS) and body tested to 20 kg/sq.cm seat tested to 10 kg/sq.cm. with ISI mark. All moving parts are to be greased for easy operation of valves. all fixing bolts in the stuffing box, the nuts at top and the joint to be fixed with two layers of standard rubber gasket for full width of valves shall be furnished. Commercial conditions applicable (to be downloaded from web site www.bhel.com or http://tenders.gov.in) | 5 Nos | 30.04.2011 |
| 440 | Fire hydrant stand pipe of 80 mm dia -900 mm long(including right angle bend portion) made of MS pipe of make TATA / class : Heavy as per specification :IS 1236; with 12 mm thick MS flanges welded on both the ends , specification :IS 226 ;inlet flange bolt holes shall suit flanged duck foot bend as per : 1538 and the other outlet end flange holes shall suit the fire hydrant valve as per IS : 5290. Painting: one coat of red Oxide primer and two coat of fire Red paint. Commercial conditions applicable (to be downloaded from web site www.bhel.com or http://tenders.gov.in) | 5 Nos | 30.04.2011 |

Note: Material should be delivered to

Indigenous Vendors:

FOR, BHEL, Stores

Power Plant Piping Unit

Tirumayam

Pudukkottai Dist.

Special Condition applicable

Please give confirmation for the following points by points along with your offer:

1. Offer shall be submitted in Two Part Bid system as per terms and conditions



Bharat Heavy Electricals Limited

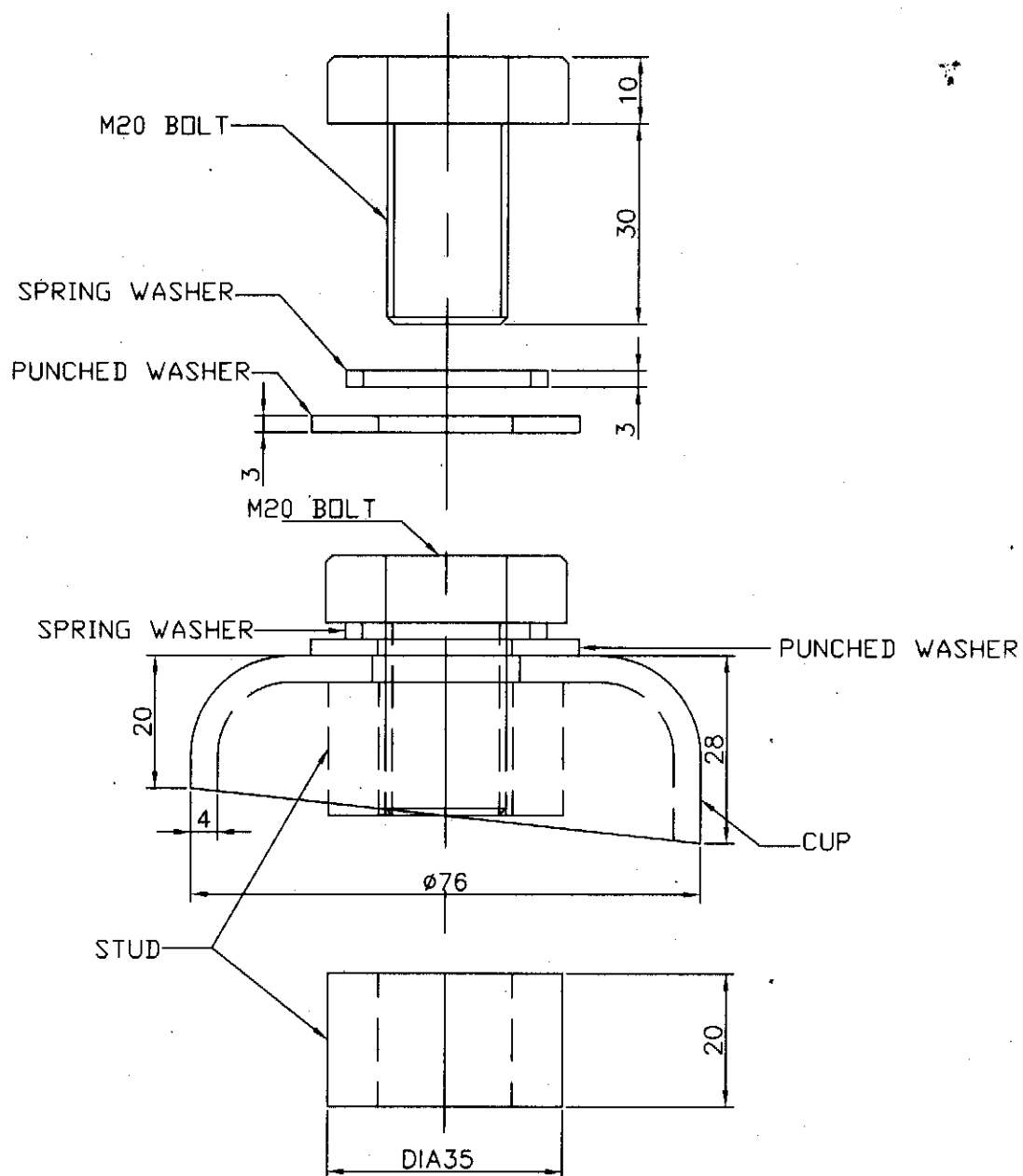
(High Pressure Boiler Plant)

Tiruchirappalli – 620014, TAMIL NADU, INDIA

An ISO 9001
Company

MATERIALS MANAGEMENT / CAPITAL EQUIPMENT

| Item | Description | Quantity | Delivery Schedule |
|------|--|--|-------------------|
| | <p>enclosed.</p> <ol style="list-style-type: none"> Prices to be quoted Item wise to enable ordering of Individual Item. Specification for Individual Item has been given above. Data required with Technical literature shall be produced for technical evaluation. The vendor shall be able to produce test certificate for their product confirming to the relevant IS specifications and the tests stipulated in relevant standards and codes. The vendor shall guarantee their product for one year after erection and replace the pipes and specials against damage due to quality and manufacturing defects at free of cost within the guarantee period of one year for which Performance Bank Guarantee for 10% of Purchase Order value may be obtained. The vendor should arrange for inspection of CI pressure pipes & specials and the tests at their works before despatch. The intimation for inspection should be given at least 10 days in advance. Total transportation and unloading at BHEL sight shall be with vendor's scope only and transit damage if any shall be replaced by the vendor. Successful vendor has to submit product catalogue, erection and fixing details-3 sets for BHEL reference. Checklist to be filled and enclosed along with the offer failing which, the offer will not be considered for evaluation. <p>BHEL's General guidelines / instructions including bank guarantee formats and list of consortium banks, Commercial terms check-list can be downloaded from BHEL web site http://www.bhel.com or from the Government tender website http://tenders.gov.in (public sector units > Bharat Heavy Electricals Limited page) under Enquiry reference "2621000145".</p> | | |
| | <p>Tenders should reach us before 14:00 hours on the due date Tenders will be opened at 14:30 hours on the due date Tenders would be opened in presence of the tenderers who have submitted their offers and who may like to be present</p> | <p>Yours faithfully, For BHARAT HEAVY ELECTRICALS LIMITED</p> <p>Sr.Manager / Capital Equipment / MM</p> | |



*As per
9/11/10
Dmle/PLS(10)*



Bharat Heavy Electricals Ltd
UNIT: HIGH PRESSURE BOILER PLANT
TIRUCHIRAPALLI - 620014

| DRN | NAME | SIGNATURE | DATE | NO. OF VAR |
|------|-----------------|-----------|----------|------------|
| CHD | J. ANANDAN | -Sd- | 03.03.01 | |
| APPD | K. GUNASEKARAN | -Sd- | | |
| | A. ARULANANDHAM | -Sd- | | |

| DEPT | GRADE OF UNTOL. DIM | SCALE | WEIGHT (Kg) | REF TO ASSY / OLD DWG | ITEM NO | No OF ITEMS |
|--------------------------------|---------------------|-------|-------------|-----------------------|---------|-------------|
| CODE | C/M/F | | | | | |
| TITLE | | | | DRAWING NO : | | REV |
| DETAILS OF CUP TYPE RAIL CLAMP | | | | BHE:CP:04:39:2001 | | |
| CARD CODE | | | | | | |
| U 01 | | | | | | |