



An ISO 9001
Company

Bharat Heavy Electricals Limited

(High Pressure Boiler Plant)

Tiruchirappalli – 620014, TAMIL NADU, INDIA

MATERIALS MANAGEMENT / CAPITAL EQUIPMENT

ENQUIRY – Corrigendum 1

Phone: +91 431 257 70 49
Fax : +91 431 252 07 19
Email : csguna@bheltry.co.in
Web : www.bhel.com

NIT - 6281

**Enquiry
Number:**

2620900080

**Enquiry
Date:**

30.03.2009

**Due date for submission
of quotation (Revised) :**

11.05.2009

You are requested to quote the Enquiry number date and due date in all your correspondences. This is only a request for quotation and not an order

Item Description : Procurement of Tube to Tube sheet welding Machine – 1 No.

Details of Corrigendum

- 1. Dimension in Annexure - 1 revised (Revision 01).**
- 2. The due date for submission of quotation has been extended to 11.05.2009**

All other terms and conditions and specifications as published in the NIT 6281 remain unaltered.

Confirmation of acceptance for BHEL commercial terms & conditions and Price Bid formats have been posted in BHEL Corporate web site www.bhel.com or from the Government tender website <http://tenders.gov.in> (public sector units > Bharat Heavy Electricals Limited page) under Enquiry reference “2620900080 ”.

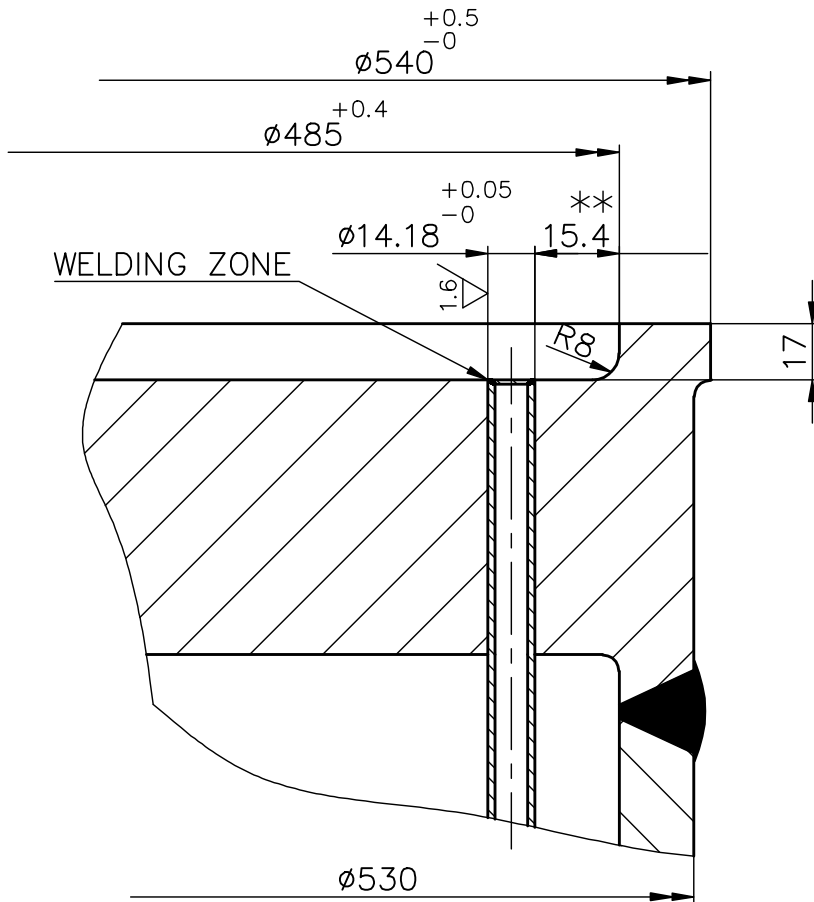
Tenders should reach us before 14:00 hours on the due date
Tenders will be opened at 14:30 hours on the due date
Tenders would be opened in presence of the tenderers who have submitted their offers and who may like to be present

Yours faithfully,
For BHARAT HEAVY ELECTRICALS LIMITED

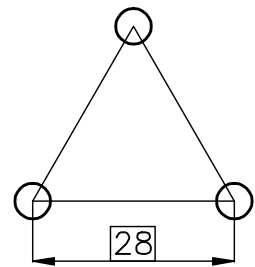
Sr.Manager / MM / Capital Equipment

ANNEXURE-1

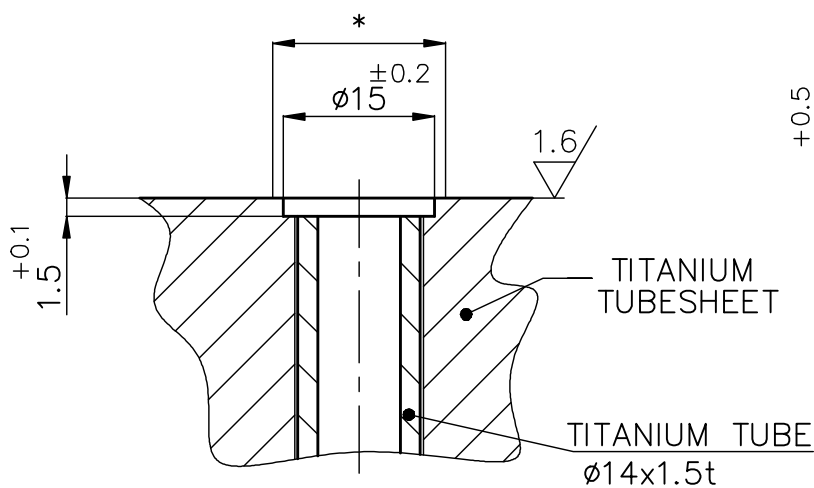
TUBE SHEET



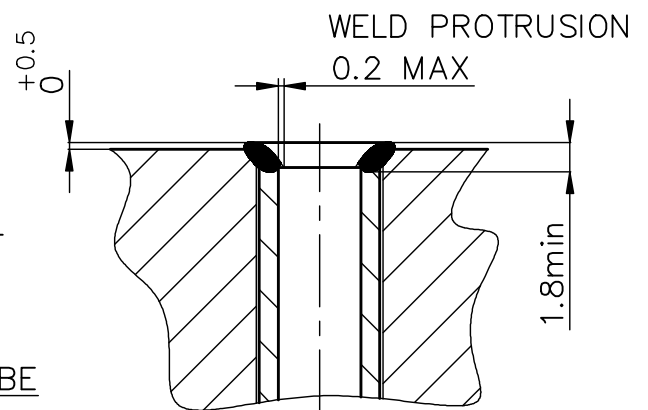
PITCH PATTERN



EP DETAIL



WELD DETAIL



NO.OF HOLES 198

*SPOT FACING DEPTH<0.1MM AND DIA20mm

** MINIMUM DISTANCE TO WALL IS SHOWN,ALTHOUGH A NUMBER OF PERIPHERAL HOLES HAVE VALUES IN THE RANGE OF 20mm.VENDOR TO CONFIRM/MENTION SPACE REQUIREMENT FOR ACCOMODATING THE WELDING HEAD & SHIELDING ARRANGEMENT.