

FIRST ANGLE PROJECTION

(ALL DIMENSIONS ARE IN mm)

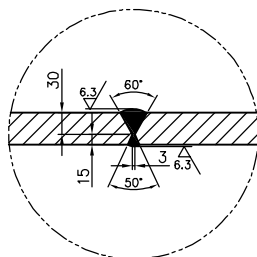
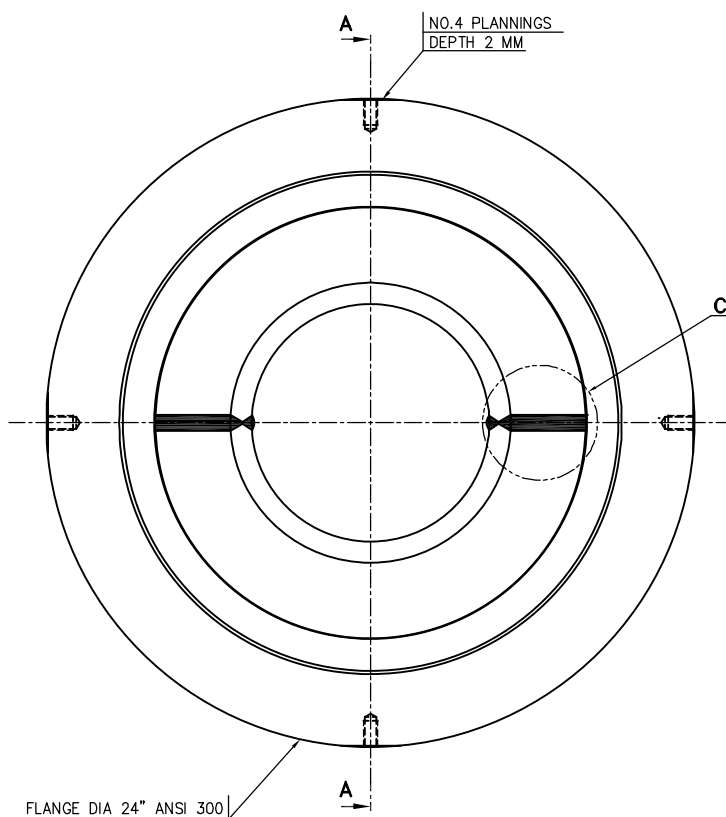
DRG. NO. 2-331-07-00048

✓ (6.3)

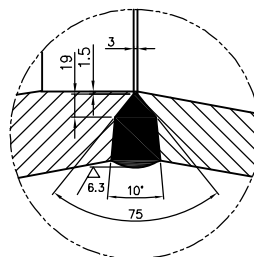
THE INFORMATION ON THIS DOCUMENT IS THE PROPERTY OF BHARAT HEAVY ELECTRICALS LIMITED. IT MUST NOT BE USED DIRECTLY OR INDIRECTLY IN ANY WAY DETRIMENTAL TO THE INTEREST OF THE COMPANY

GENERAL DIMENSIONAL LIMITS, FITS & TOLERANCES AS PER HY0230261

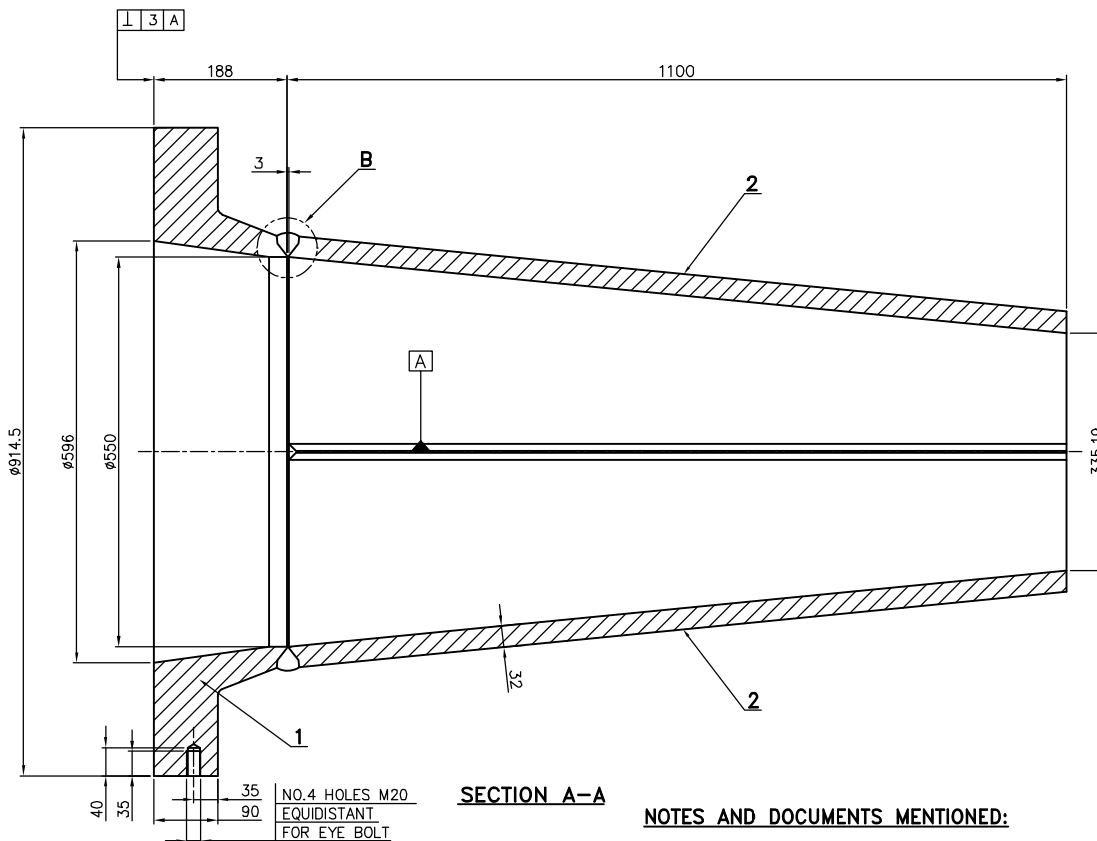
JCS



DETAIL-C



DETAIL-B



SECTION A-A

NOTES AND DOCUMENTS MENTIONED:

1. MACHINING AND CHECKING RULES ACCORDING TO TC72059 (ITN07713.01)
2. DEVIATIONS FOR DIMENSIONS WITHOUT INDICATION OF TOLERANCE ACCORDING TO TC72066 (ITN02312)
3. THE VALUES OF THE GEOMETRICAL TOLERANCES ARE THE MAX READING ON THE GAUGE (F.I.R.)
4. CARRY OUR WELDING AS PER WPS - WE001
5. SEQUENCE OF WELDING SHALL BE FOLLOWED AS SPECIFIED IN IN TECHNOLOGICAL PROCESS
6. USE ONLY QUALIFIED WELDERS
7. RADIO GRAPHIC PROEDURE AND ACCEPTANCE AS PER STD: HY0850170
8. MPI PROCEDURE AND ACCEPTANCE AS PER STD: HY0850180

TYPE OF PRODUCT OR NAME OF CUSTOMER/PROJECT		BCL 806			
BHARAT HEAVY ELECTRICALS LTD. HYDERABAD		NAME	SIGN.	DATE	NO. OF VAR.
CHD: KVS		PV		21.06.18	N.A.
APPD: NEJA		NEJA		23.06.18	N.A.
				25.06.18	N.A.
DEPT. CODE	UNTO. DMS. CODE	SCALE	WEIGHT (KG)	REF. TO GENP. DRG.	ITEM NO.
430	430	NTS	655	SW 4586326	N.A.
TITLE		DRAWING NO.		REV.	
DISCHARGE NOZZLE FABRICATED		2-331-07-00048		00	
DIA 24" - 300#		SHT. No		NO. OF SHT. Q1	

Jan Tue 9 10:22 2019

This Drawing is printed from Engineering Digital Archive System (EDAS). Therefore signatures are not essentially required