

COPY RIGHT AND CONFIDENTIAL
The information on this document is the property of BHARAT HEAVY ELECTRICALS LIMITED
It must not be used directly or indirectly in anyway detrimental to the interest of the company.

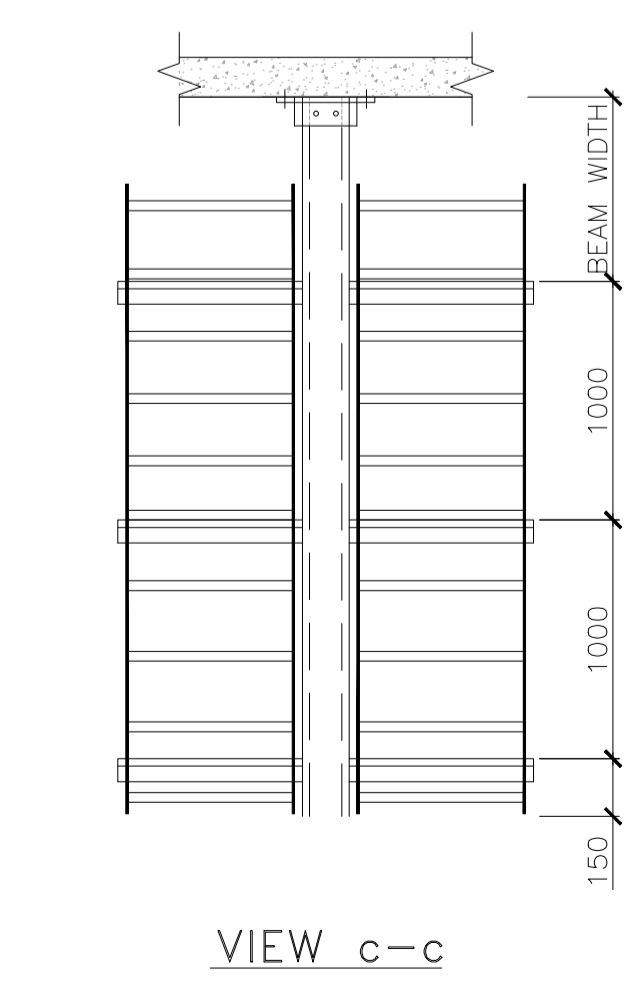
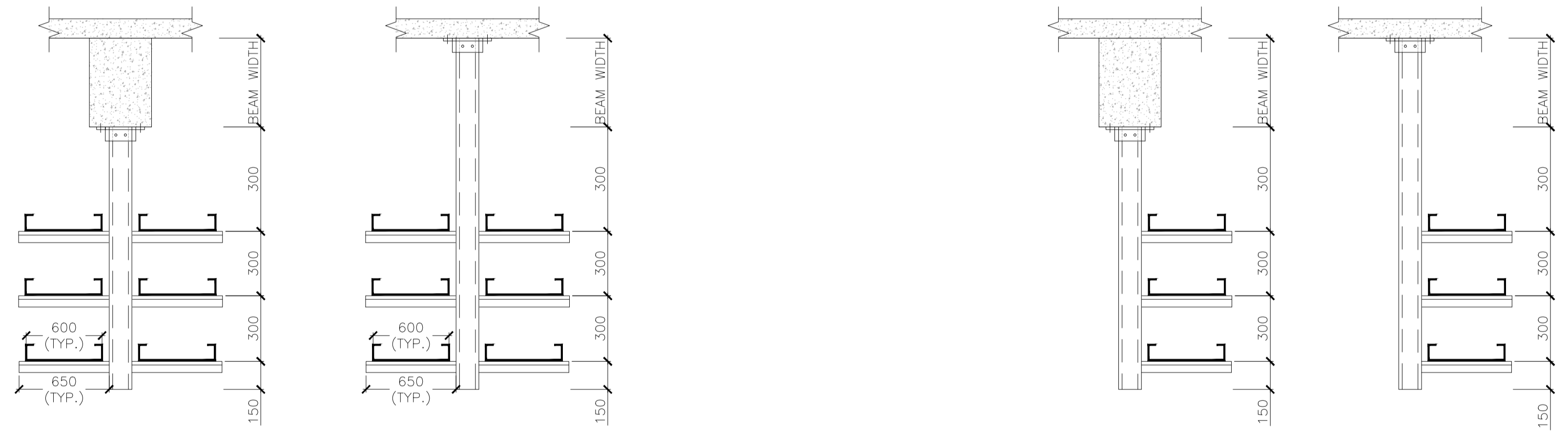
INVENTORY No. SIGN. & DATE REF. DRG. No. COMPUTER DRG. PATH NAME :

- NOTES:-**
- THIS DRAWING SHALL BE REFERRED ONLY FOR INSTALLATION OF CABLE TRAY AND CABLE TRAY SUPPORT SYSTEM. FOR CONSTRUCTIONAL DETAILS OF TRAY SUPPORT MATERIALS AND CABLE TRAY SYSTEM. APPROVED MANUFACTURER DRAWINGS SHALL BE REFERRED
1. ALL DIMENSION ARE IN MM UNLESS NOTED OTHERWISE.
 2. POWER & CONTROL CABLE SHALL BE LAID ON SEPERATE TRAYS.
 3. THIS DRAWING SHALL BE READ IN CONJUNCTION WITH TECHNICAL SPECIFICATION.
 4. THE LOCATION AND QTY. OF PANELS ARE INDICATIVE, ACTUAL LOCATION MAY BE DECIDED AT SITE.
 5. THE LOCATION OF DRY TYPE TRANSFORMERS ARE INDICATIVE, ACTUAL LOCATION WILL BE FINALISED LATER.
 6. WHEREVER CUTOUT IS PROVIDED FOR FUTURE PANELS SAME SHALL BE COVERED TO FULLY FLUSH WITH THE FINISHED FLOOR.
 7. CABLE RACKS SHALL BE FIXED AT EVERY 1500MM INSIDE CONTROL ROOM BUILDING. AS WELL AS SWITCHYARD IN TRENCHES
 8. PANELS ON TRENCHES SHALL BE SUPPORTED ON CHANNELS FIXED OVER TRENCHES FLUSHED WITH FFL.

- A. SUPPORTING ARRANGEMENT IN CABLE VAULT**
1. BASEPLATES/ANGLE FITTINGS SHALL BE CONTINUOUSLY WELDED ALL ROUND TO STEEL MEMBERS/ PLATE INSERTS PROVIDED. BRACKETS/ CLAMPS SHALL BE WELDED TO STEEL SURFACE WITH SINGLE/DOUBLE CHANNEL (C1/C2) (AS APPLICABLE) IN POSITION TO ENSURE ALIGNMENT OF CLAMPS/CHANNEL. WELD THICKNESS SHALL BE 6MM MINIMUM. IN PLACE OF STEEL NECESSARY CONNECTION WILL BE REALISED BY USE OF BRACKETS/ CLAMPS FIXED TO CONCRETE SURFACE WITH ANCHOR FASTENERS.
 2. SINGLE/DOUBLE CHANNEL SUPPORT (C1/C2) WHEREVER SUPPORTED FROM TOP ONLY SHALL BE USED FOR UPTO THREE TIER INCLUDING TRAYS. WHEREVER MORE THAN THREE TRAYS ARE TO BE SUPPORTED IN THIS MANNER. DOUBLE CHANNEL (C2) FIXED AT BOTH ENDS SHALL BE USED.
 3. GALVANISATION DAMAGED DUE TO WELDING/ CUTTING SHALL BE BRUSHED AND RED LEAD PRIMER OIL PRIMER AND ALUMINIUM PAINT SHALL BE APPLIED.

- B. SUPPORTING ARRANGEMENT IN TRENCHES**
1. CHANNEL SUPPORT SHALL BE PROVIDED AT 1500 M SPACING AND SHALL BE FIXED AGAINST TRENCH WALL. CHANNEL SUPPORT SINGLE/DOUBLE (C1/C2) (AS APPLICABLE) SHALL BE WELDED CONTINUOUSLY.

- C. CHANNEL FRAME WORK FOR RISERS**
1. IN ADDITION TO THE SUPPORT FROM GROUND, THE RISER FRAMEWORK SHALL BE CONNECTED TO THE AVAILABLE BUILDING STEEL AT HIGHER ELEVATIONS WHEREVER AVAILABLE. THIS SHALL BE DONE BY USING ANGLE FITTINGS BOLTED TO THE RISER STRUCTURE ON BOTH END. IN CASE CONCRETE SURFACE IS AVAILABLE IN PLACE OF STEEL NECESSARY CONNECTION WILL BE REALISED BY USE OF BRACKETS/ CLAMPS FIXED TO CONCRETE SURFACE WITH ANCHOR FASTENERS.
 2. CABLE TRAYS SHALL NORMALLY BE FIXED TO CANTILEVER ARMS BY MEANS OF PAN HEAD SCREW & NUT SUPPLIED AS PART OF CANTILEVER ARMS. TRAY CLAMP (TC1) SHALL BE USED FOR CLAMPING THE TRAY TO CANTILEVER ARM WHEREVER DUE TO MANUFACTURING/ERECTION/SITE LIMITATIONS. THE CENTER LINES OF CANTILEVER ARM AND THE HOLES IN TRAY BOTTOMS ARE NOT MATCHED.
 3. WHEREVER DIFFERENT ALTERNATIVES FOR SIMILAR SUPPORT ARRANGEMENT ARE SHOWN. SITE SHALL DECIDE THE EXACT ALTERNATIVE TO BE USED DEPENDING UPON SITE CONDITIONS.
 4. WHEREVER CANTILEVER ARM CANNOT BE USED FOR DIRECT SUPPORTING OF TRAYS DUE TO LAYOUT CONSTRAINTS (E.G. BENDING OF TRAYS TO AVOID OBSTRUCTION), SUFFICIENT LENGTHS OF (C1) SHALL BE USED AS DIRECT SUPPORT IN PLACE. THESE SHALL BE FIXED BY MEANS OF ANGLE FITTING (LA1/HL1).
 5. BEAM CLAMP SHALL BE USED WHEREVER STRUCTURAL BEAM OF SUITABLE SECTION AND ORIENTATION IS AVAILABLE.



ADDITIONAL INFORMATION W.D.No. 44097		TAMILNADU GENERATION AND DISTRIBUTION CORPORATION (TANGEDCO)	
STATUS OF DRAWING DISTRIBUTION OF PRINTS		400KV GIS AT 2 X 660 MW ENNORE SEE SUPERCRITICAL THERMAL POWER PROJECT AT ASH DYEK OF NCTPS	
NAME OF CONSULTANT		DESIGN PRIVATE LIMITED, NEW DELHI.	
BHARAT HEAVY ELECTRICALS LTD. TRANSMISSION BUSINESS GROUP		DESIGNED / NAME SKS 20.10.17	CHECKED / NAME SKS 20.10.17
REV. DATE	APPROVED	REV. DATE	APPROVED
1.00	14.08.17	1.00	14.08.17
SHEET / FILE INDOOR TRENCH LAYOUT FOR SWITCHYARD CONTROL ROOM TRAY LAYOUT FOR 400KV SWITCHYARD ENNORE		SHEET NO. / DRAWING NO. TB-378-510-008	SHEET NO. / DRAWING NO. 00