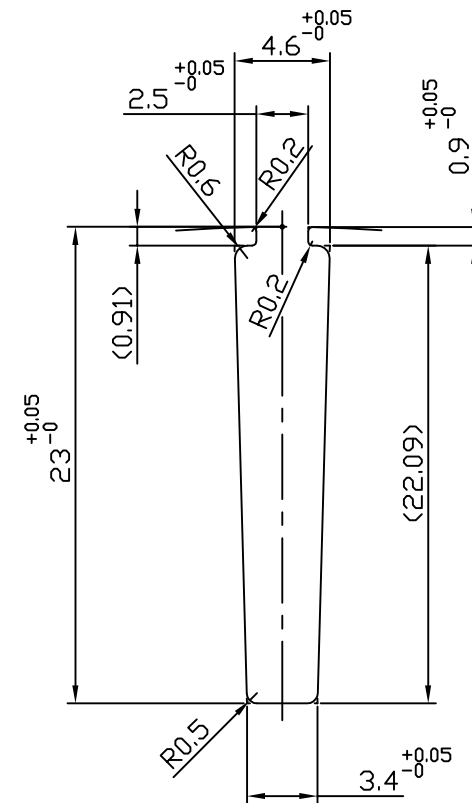
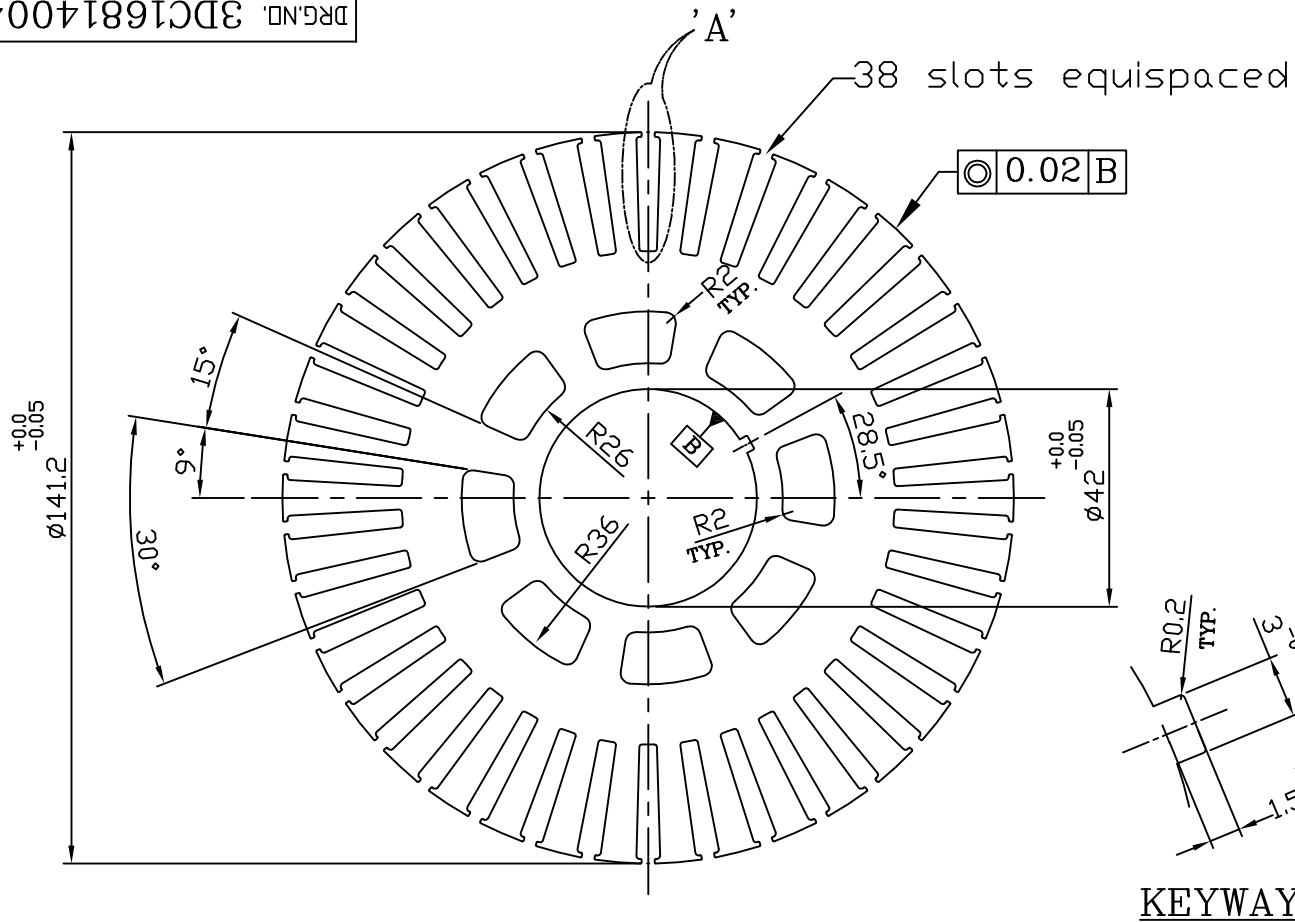


DRG.NO. 3DC168140043

Technical Requirements:

1. Stator ID cuts have to be used from 0.35mm thick CRNGO silicon steel collected from BHEL.
2. General tolerance: ± 0.1 mm
3. All sharp corners are to be rounded off with radius 0.1mm

TYPE OF PRODUCT
OR

70kW MOTOR

NAME OF CUSTOMER/PROJECT

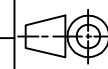


BHARAT HEAVY ELECTRICALS LIMITED

Corp. R&D Division, Vikasnagar
HYDERABAD - 500 093

	NAME	SIGN.	DATE	NO.OF VAR.
DRN.	T.Ramesh		28.04.18	00
CHD.	A.Venkanna			
APPD.	S.Karunakar			

DEPT. EMC



SCALE

WEIGHT (KG)

REF. TO ASSY DRG.

ITEM NO.

NO.OF ITEMS

CODE 29

NTS

TITLE
ROTOR STAMPING VER2DRAWING NO.
3DC168140043REV.
00

SHEET NO.

NO OF SHEETS