

SP2000250201

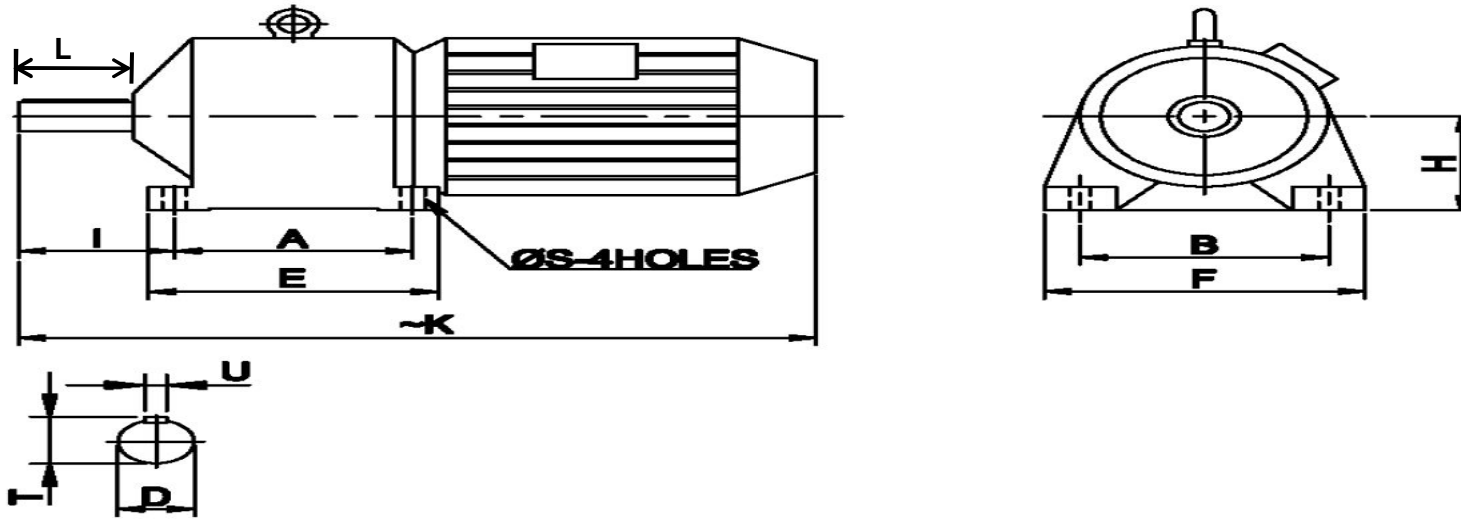
## BLOOM SKID ROLLER CONVEYOR GEARED MOTOR

## SPECIFICATION SHEET

SI. No	SPECIFICATION	BHEL REQUIREMENT	BIDDER RESPONSE	COMMENTS
<b>1</b>	<b>MOTOR SPECIFICATIONS</b>			
1.1	Make	Bidder to specify		
1.2	Model/Part number	Bidder to specify		
1.3	Rated Power	7.5 KW		
1.4	Rated Torque	Bidder to specify		
1.5	Maximum Torque	1.6 times the rated torque		
1.6	Rated Voltage	415 V ( $\Delta$ )		
1.7	Rated Frequency	50 Hz		
1.8	Rated Speed	1450 rpm		
1.9	Rated Current	Bidder to specify		
1.10	Efficiency	Bidder to specify		
1.11	Power Factor	Bidder to specify		
1.12	Frame size	132M		
1.13	Mounting Position	IM B5 (Flange)		
1.14	Degree of Protection	IP 55		
1.15	Insulation Class	F		
1.16	Duty type rating	S5		
1.17	Cyclic Duration Factor	10%		
1.18	Starts per hour	60		
1.19	Starting method	Variable Frequency Drive		
1.20	Direction of rotation	Both		
1.21	Method of Cooling	IC 411 (TEFC)		
1.22	Location of Terminal Box	Left (when viewed from Non drive end)		
1.23	Confirming standard	IS 325		

<b>2</b>	<b>GEARBOX SPECIFICATIONS</b>			
2.1	Construction	Gears and pinions of planetary type made out of alloy steel in generating process, further hardened and ground to high precision and accuracy.		
2.2	Rated Torque	1055 Nm		
2.3	Maximum Torque	1687 Nm		
2.4	Rated Speed	68 rpm		
2.5	Gear Ratio	21.32		
2.6	Load Classification	AGMA Class III		
2.7	Service factor	Bidder to specify (Not less than 2.0)		
2.8	Mounting Position	IM B3 (Foot)		
2.9	Lubrication nipple	Should be available		

3		DIMENSIONAL DETAILS	
3.1	Dimensions as per the drawing given below.	A = 368	
3.2	All Dimensions are in mm.	B = 384	
3.3		$\varnothing D = 63.5 \text{ } \mu\text{6}$	
3.4		E = 435	
3.5		F = 473	
3.6		H = 197	
3.7		I = 203	
3.8		K = 890	
3.9		L = 121	
3.10		$\varnothing S = 20$	
3.11		T = 70.5 +0.2	
3.12		U = 18	



4		QUALIFYING CONDITIONS AND DOCUMENTS TO BE SUBMITTED	
4.1	Only those Bidders who have supplied similar or higher capacity/ size equipment that is working satisfactorily for at least two year after commissioning should quote.	Bidder to confirm. Attach relevant copies	
4.2	Motor Datasheet	Bidder to attach along with offer	
4.3	Motor GA drawing	Bidder to attach along with offer	
4.4	Gearbox Datasheet	Bidder to attach along with offer	
4.5	Gearbox GA drawing	Bidder to attach along with offer	
4.6	Routine test reports	To be provided during supply	
4.7	Operation and Maintenance manuals	To be provided during supply	
4.8	Detailed Engineering drawing of gear box	To be provided during supply	

SP2000250208

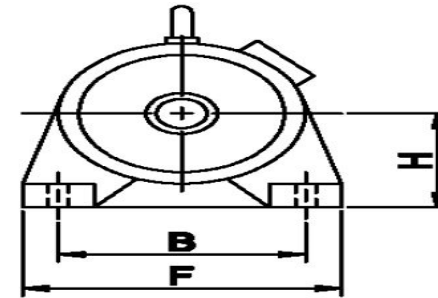
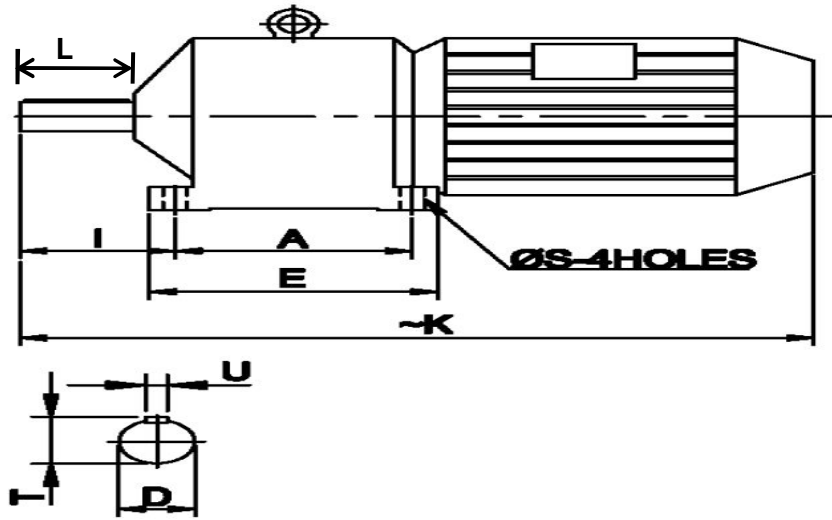
## RHF CHARGING ROLLER CONVEYOR GEARED MOTOR

## SPECIFICATION SHEET

SI. No	SPECIFICATION	BHEL REQUIREMENT	BIDDER RESPONSE	COMMENTS
<b>1</b>	<b>MOTOR SPECIFICATIONS</b>			
1.1	Make	Bidder to specify		
1.2	Model/Part number	Bidder to specify		
1.3	Rated Power	3.7 KW		
1.4	Rated Torque	Bidder to specify		
1.5	Maximum Torque	1.6 times the rated torque		
1.6	Rated Voltage	415 V ( $\Delta$ )		
1.7	Rated Frequency	50 Hz		
1.8	Rated Speed	1450 rpm		
1.9	Rated Current	Bidder to specify		
1.10	Efficiency	Bidder to specify		
1.11	Power Factor	Bidder to specify		
1.12	Frame size	112M		
1.13	Mounting Position	IM B5 (Flange)		
1.14	Degree of Protection	IP 55		
1.15	Insulation Class	F		
1.16	Duty type rating	S5		
1.17	Cyclic Duration Factor	40%		
1.18	Starts per hour	120		
1.19	Starting method	Variable Frequency Drive		
1.20	Direction of rotation	Both		
1.21	Method of Cooling	IC 411 (TEFC)		
1.22	Location of Terminal Box	Left (when viewed from Non drive end)		
1.23	Confirming standard	IS 325		

<b>2</b>	<b>GEARBOX SPECIFICATIONS</b>			
2.1	Construction	Gears and pinions of planetary type made out of alloy steel in generating process, further hardened and ground to high precision and accuracy.		
2.2	Rated Torque	635 Nm		
2.3	Maximum Torque	1016 Nm		
2.4	Rated Speed	56 rpm		
2.5	Gear Ratio	25.89		
2.6	Load Classification	AGMA Class III		
2.7	Service factor	Bidder to specify (Not less than 2.0)		
2.8	Mounting Position	IM B3 (Foot)		
2.9	Lubrication nipple	Should be available		

3		DIMENSIONAL DETAILS	
3.1	Dimensions as per the drawing given below.	A = 298	
3.2	All Dimensions are in mm.	B = 318	
3.3		$\varnothing D = 44.45 \text{ j6}$	
3.4		E = 356	
3.5		F = 387	
3.6		H = 171	
3.7		I = 129	
3.8		K = 760	
3.9		L = 83	
3.10		$\varnothing S = 17$	
3.11		T = 48.69	
3.12		U = 9.52	



4		QUALIFYING CONDITIONS AND DOCUMENTS TO BE SUBMITTED	
4.1	Only those Bidders who have supplied similar or higher capacity/ size equipment that is working satisfactorily for at least two year after commissioning should quote.	Bidder to confirm. Attach relevant copies	
4.2	Motor Datasheet	Bidder to attach along with offer	
4.3	Motor GA drawing	Bidder to attach along with offer	
4.4	Gearbox Datasheet	Bidder to attach along with offer	
4.5	Gearbox GA drawing	Bidder to attach along with offer	
4.6	Routine test reports	To be provided during supply	
4.7	Operation and Maintenance manuals	To be provided during supply	
4.8	Detailed Engineering drawing of gear box	To be provided during supply	

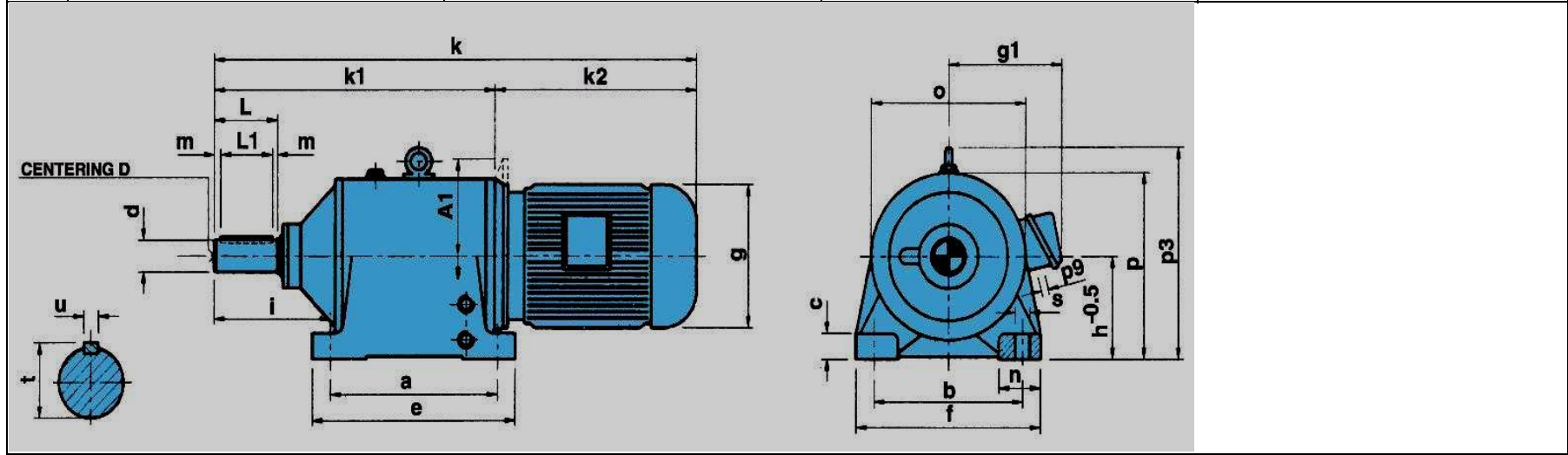
SP2000250215

## RHF TO CPE ROLLER CONVEYOR GEARED MOTOR

## SPECIFICATION SHEET

Sl. No	SPECIFICATION	BHEL REQUIREMENT	BIDDER RESPONSE	COMMENTS
<b>1</b>	<b>MOTOR SPECIFICATIONS</b>			
1.1	Make	Bidder to specify		
1.2	Model/Part number	Bidder to specify		
1.3	Rated Power	5.5 KW		
1.4	Rated Torque	Bidder to specify		
1.5	Maximum Torque	1.6 times the rated torque		
1.6	Rated Voltage	415 V ( $\Delta$ )		
1.7	Rated Frequency	50 Hz		
1.8	Rated Speed	1450 rpm		
1.9	Rated Current	Bidder to specify		
1.10	Efficiency	Bidder to specify		
1.11	Power Factor	Bidder to specify		
1.12	Frame size	132S		
1.13	Mounting Position	IM B5 (Flange)		
1.14	Degree of Protection	IP 55		
1.15	Insulation Class	F		
1.16	Duty type rating	S5		
1.17	Cyclic Duration Factor	30%		
1.18	Starts per hour	180		
1.19	Starting method	Variable Frequency Drive		
1.20	Direction of rotation	Both		
1.21	Method of Cooling	IC 411 (TEFC)		
1.22	Location of Terminal Box	Left (when viewed from Non drive end)		
1.23	Confirming standard	IS 325		
<b>2</b>	<b>GEARBOX SPECIFICATIONS</b>			
2.1	Construction	Gears and pinions of planetary type made out of alloy steel in generating process, further hardened and ground to high precision and accuracy.		
2.2	Rated Torque	172 Nm		
2.3	Maximum Torque	275 Nm		
2.4	Rated Speed	306 rpm		
2.5	Gear Ratio	4.74		
2.6	Load Classification	AGMA Class III		
2.7	Service factor	Bidder to specify (Not less than 2.0)		
2.8	Mounting Position	IM B3 (Foot)		
2.9	Lubrication nipple	Should be available		

3	DIMENSIONAL DETAILS	
3.1	Dimensions as per the drawing given below.	a=200
3.2	All Dimensions are in mm.	b=205
3.3		c=30
3.4		e=240
3.5		f=250
3.6		n=256
3.7		s=18
3.8		g=267
3.9		g1=207
3.10		h=132
3.11		i=142
3.12		k=735
3.13		k1=316
3.14		k2=419
3.15		o=220
3.16		p=242
3.17		p3=285
3.18		p9=21
3.19		A1=250
3.20		d=40k6
3.21		L=110
3.22		L1=100
3.23		m=5
3.24		t=43
3.25		u=12
3.26		D=M16



4	QUALIFYING CONDITIONS AND DOCUMENTS TO BE SUBMITTED	
4.1	Only those Bidders who have supplied similar or higher capacity/ size equipment that is working satisfactorily for at least two year after commissioning should quote.	Bidder to confirm. Attach relevant copies
4.2	Motor Datasheet	Bidder to attach along with offer
4.3	Motor GA drawing	Bidder to attach along with offer
4.4	Gearbox Datasheet	Bidder to attach along with offer
4.5	Gearbox GA drawing	Bidder to attach along with offer
4.6	Routine test reports	To be provided during supply
4.7	Operation and Maintenance manuals	To be provided during supply
4.8	Detailed Engineering drawing of gear box	To be provided during supply

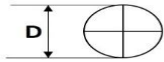
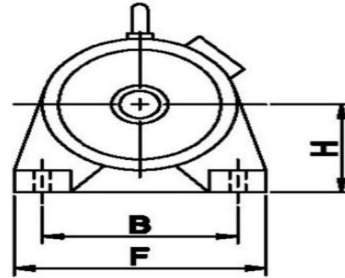
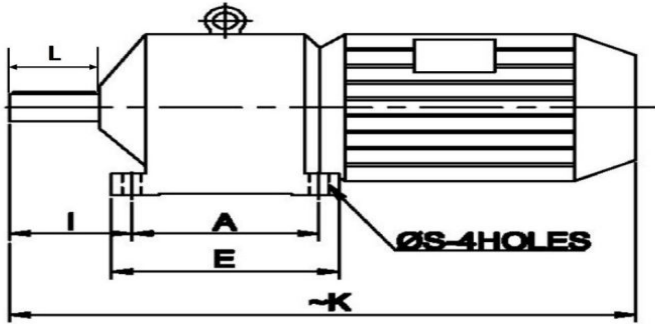
SP2000250222

## CPE ALIGNING ROLLER CONVEYOR GEARED MOTOR

## SPECIFICATION SHEET

Sl. No	SPECIFICATION	BHEL REQUIREMENT	BIDDER RESPONSE	COMMENTS
<b>1</b>	<b>MOTOR SPECIFICATIONS</b>			
1.1	Make	Bidder to specify		
1.2	Model/Part number	Bidder to specify		
1.3	Rated Power	1.1 KW		
1.4	Rated Torque	Bidder to specify		
1.5	Maximum Torque	1.6 times the rated torque		
1.6	Rated Voltage	415 V ( $\Delta$ )		
1.7	Rated Frequency	50 Hz		
1.8	Rated Speed	1450 rpm		
1.9	Rated Current	Bidder to specify		
1.10	Efficiency	Bidder to specify		
1.11	Power Factor	Bidder to specify		
1.12	Frame size	90S		
1.13	Mounting Position	IM B5 (Flange)		
1.14	Degree of Protection	IP 55		
1.15	Insulation Class	F		
1.16	Duty type rating	S5		
1.17	Cyclic Duration Factor	10%		
1.18	Starts per hour	180		
1.19	Starting method	Variable Frequency Drive		
1.20	Direction of rotation	Both		
1.21	Method of Cooling	IC 411 (TEFC)		
1.22	Location of Terminal Box	Left (when viewed from Non drive end)		
1.23	Confirming standard	IS 325		
<b>2</b>	<b>GEARBOX SPECIFICATIONS</b>			
2.1	Construction	Gears and pinions of planetary type made out of alloy steel in generating process, further hardened and ground to high precision and accuracy.		
2.2	Rated Torque	86 Nm		
2.3	Maximum Torque	138 Nm		
2.4	Rated Speed	126 rpm		
2.5	Gear Ratio	11.51		
2.6	Load Classification	AGMA Class III		
2.7	Service factor	Bidder to specify (Not less than 2.0)		
2.8	Mounting Position	IM B3 (Foot)		
2.9	Lubrication nipple	Should be available		

3	DIMENSIONAL DETAILS		
3.1	Dimensions as per the drawing given below.	A = 168	
3.2	All Dimensions are in mm.	B = 138	
3.3		ØD = 30 (k6)	
3.4		E = 200	
3.5		F = 195	
3.6		H = 115	
3.7		I = 65	
3.8		K = 550	
3.9		L = 55	
3.10		ØS = 18	



4	QUALIFYING CONDITIONS AND DOCUMENTS TO BE SUBMITTED		
4.1	Only those Bidders who have supplied similar or higher capacity/ size equipment that is working satisfactorily for at least two year after commissioning should quote.	Bidder to confirm. Attach relevant copies	
4.2	Motor Datasheet	Bidder to attach along with offer	
4.3	Motor GA drawing	Bidder to attach along with offer	
4.4	Gearbox Datasheet	Bidder to attach along with offer	
4.5	Gearbox GA drawing	Bidder to attach along with offer	
4.6	Routine test reports	To be provided during supply	
4.7	Operation and Maintenance manuals	To be provided during supply	
4.8	Detailed Engineering drawing of gear box	To be provided during supply	

SP2000250229

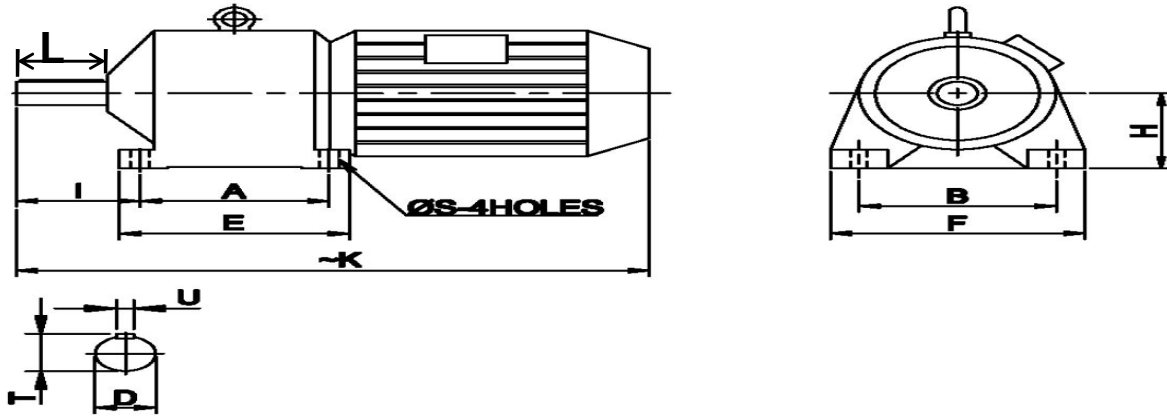
## CPE EMERGENCY ROLLER CONVEYOR GEARED MOTOR

## SPECIFICATION SHEET

Sl. No	SPECIFICATION	BHEL REQUIREMENT	BIDDER RESPONSE	COMMENTS
<b>1</b>	<b>MOTOR SPECIFICATIONS</b>			
1.1	Make	Bidder to specify		
1.2	Model/Part number	Bidder to specify		
1.3	Rated Power	5.5 KW		
1.4	Rated Torque	Bidder to specify		
1.5	Maximum Torque	1.6 times the rated torque		
1.6	Rated Voltage	415 V ( $\Delta$ )		
1.7	Rated Frequency	50 Hz		
1.8	Rated Speed	1450 rpm		
1.9	Rated Current	Bidder to specify		
1.10	Efficiency	Bidder to specify		
1.11	Efficiency class	IE2		
1.12	Power Factor	Bidder to specify		
1.13	Frame size	132S		
1.14	Mounting Position	IM B5 (Flange)		
1.15	Degree of Protection	IP 55		
1.16	Insulation Class	F		
1.17	Duty type rating	S3		
1.18	Starting method	Variable Frequency Drive		
1.19	Direction of rotation	Both		
1.20	Method of Cooling	IC 411 (TEFC)		
1.21	Location of Terminal Box	Left (when viewed from Non drive end)		
1.22	Confirming standard	IS 325		

<b>2</b>	<b>GEARBOX SPECIFICATIONS</b>			
2.1	Construction	Gears and pinions of planetary type made out of alloy steel in generating process, further hardened and ground to high precision and accuracy.		
2.2	Rated Torque	340 Nm		
2.3	Maximum Torque	542 Nm		
2.4	Rated Speed	155 rpm		
2.5	Gear Ratio	9.36		
2.6	Load Classification	AGMA Class III		
2.7	Service factor	Bidder to specify (Not less than 2.0)		
2.8	Mounting Position	IM B3 (Foot)		
2.9	Lubrication nipple	Should be available		

3		DIMENSIONAL DETAILS	
3.1	Dimensions as per the drawing given below.	A = 160	
3.2	All Dimensions are in mm.	B = 220	
3.3		ØD = 42 (k6)	
3.4		E = 195	
3.5		F = 275	
3.6		H = 180	
3.7		I = 100	
3.8		K = 700	
3.9		L = 90	
3.10		ØS = 18	
3.11		T = 46	
3.12		U = 12	



4		QUALIFYING CONDITIONS AND DOCUMENTS TO BE SUBMITTED	
4.1	Only those Bidders who have supplied similar or higher capacity/ size equipment that is working satisfactorily for at least two year after commissioning should quote.	Bidder to confirm. Attach relevant copies	
4.2	Motor Datasheet	Bidder to attach along with offer	
4.3	Motor GA drawing	Bidder to attach along with offer	
4.4	Gearbox Datasheet	Bidder to attach along with offer	
4.5	Gearbox GA drawing	Bidder to attach along with offer	
4.6	Routine test reports	To be provided during supply	
4.7	Operation and Maintenance manuals	To be provided during supply	
4.8	Detailed Engineering drawing of gear box	To be provided during supply	

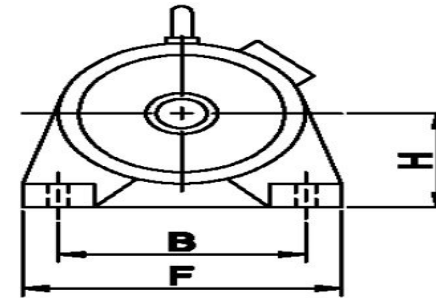
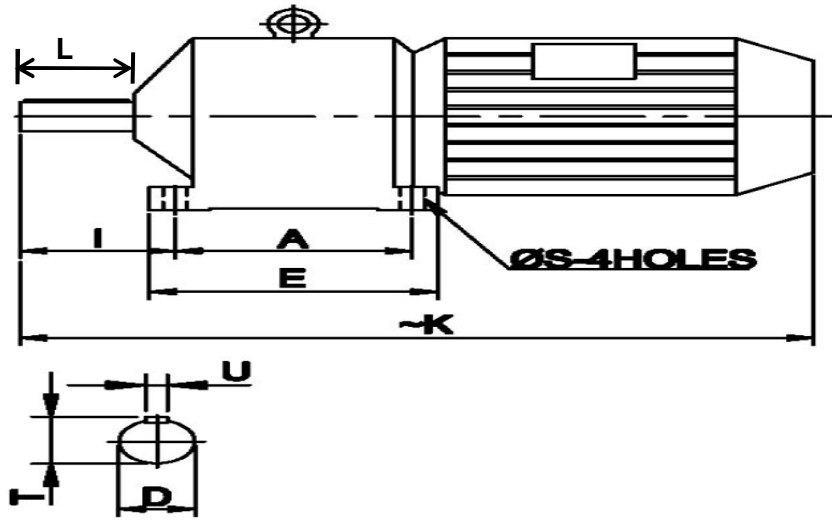
SP2000250236

**MANDREL BAR EXTRACTOR ROLLER CONVEYOR GEARED MOTOR****SPECIFICATION SHEET**

SI. No	SPECIFICATION	BHEL REQUIREMENT	BIDDER RESPONSE	COMMENTS
<b>1</b>	<b>MOTOR SPECIFICATIONS</b>			
1.1	Make	Bidder to specify		
1.2	Model/Part number	Bidder to specify		
1.3	Rated Power	7.5 KW		
1.4	Rated Torque	Bidder to specify		
1.5	Maximum Torque	1.6 times the rated torque		
1.6	Rated Voltage	415 V ( $\Delta$ )		
1.7	Rated Frequency	50 Hz		
1.8	Rated Speed	1450 rpm		
1.9	Rated Current	Bidder to specify		
1.10	Efficiency	Bidder to specify		
1.11	Power Factor	Bidder to specify		
1.12	Frame size	132M		
1.13	Mounting Position	IM B5 (Flange)		
1.14	Degree of Protection	IP 55		
1.15	Insulation Class	F		
1.16	Duty type rating	S5		
1.17	Cyclic Duration Factor	30%		
1.18	Starts per hour	180		
1.19	Starting method	Variable Frequency Drive		
1.20	Direction of rotation	Both		
1.21	Method of Cooling	IC 411 (TEFC)		
1.22	Location of Terminal Box	Left (when viewed from Non drive end)		
1.23	Confirming standard	IS 325		

<b>2</b>	<b>GEARBOX SPECIFICATIONS</b>			
2.1	Construction	Gears and pinions of planetary type made out of alloy steel in generating process, further hardened and ground to high precision and accuracy.		
2.2	Rated Torque	561 Nm		
2.3	Maximum Torque	897 Nm		
2.4	Rated Speed	128 rpm		
2.5	Gear Ratio	11.33		
2.6	Load Classification	AGMA Class III		
2.7	Service factor	Bidder to specify (Not less than 2.0)		
2.8	Mounting Position	IM B3 (Foot)		
2.9	Lubrication nipple	Should be available		

3		DIMENSIONAL DETAILS		
3.1	Dimensions as per the drawing given below.	A = 298		
3.2	All Dimensions are in mm.	B = 318		
3.3		$\varnothing D = 44.45 \text{ j6}$		
3.4		E = 356		
3.5		F = 387		
3.6		H = 171		
3.7		I = 129		
3.8		K = 881		
3.9		L = 83		
3.10		$\varnothing S = 17$		
3.11		T = 48.69		
3.12		U = 14		



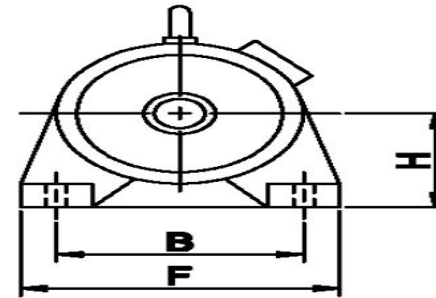
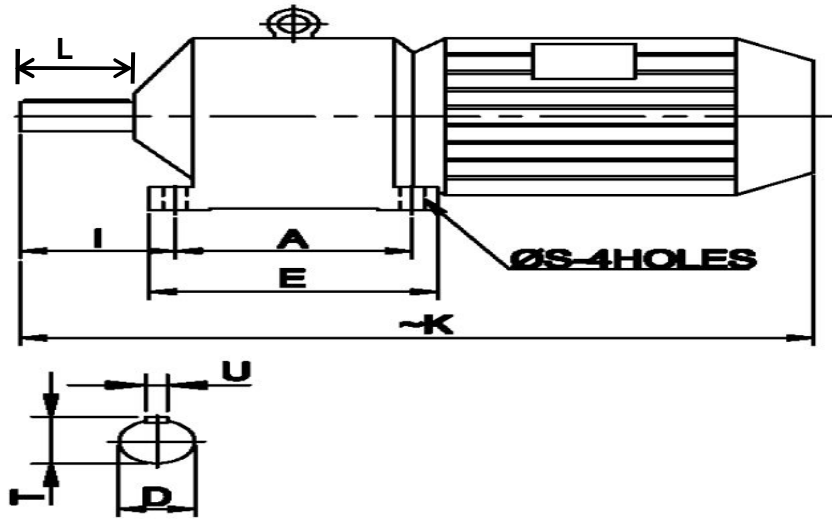
4		QUALIFYING CONDITIONS AND DOCUMENTS TO BE SUBMITTED		
4.1	Only those Bidders who have supplied similar or higher capacity/ size equipment that is working satisfactorily for at least two year after commissioning should quote.	Bidder to confirm. Attach relevant copies		
4.2	Motor Datasheet	Bidder to attach along with offer		
4.3	Motor GA drawing	Bidder to attach along with offer		
4.4	Gearbox Datasheet	Bidder to attach along with offer		
4.5	Gearbox GA drawing	Bidder to attach along with offer		
4.6	Routine test reports	To be provided during supply		
4.7	Operation and Maintenance manuals	To be provided during supply		
4.8	Detailed Engineering drawing of gear box	To be provided during supply		

SP2000250243

**MANDREL BAR CIRCULATION ROLLER CONVEYOR GEARED MOTOR****SPECIFICATION SHEET**

SI. No	SPECIFICATION	BHEL REQUIREMENT	BIDDER RESPONSE	COMMENTS
<b>1</b>	<b>MOTOR SPECIFICATIONS</b>			
1.1	Make	Bidder to specify		
1.2	Model/Part number	Bidder to specify		
1.3	Rated Power	5.5 KW		
1.4	Rated Torque	Bidder to specify		
1.5	Maximum Torque	1.6 times the rated torque		
1.6	Rated Voltage	415 V ( $\Delta$ )		
1.7	Rated Frequency	50 Hz		
1.8	Rated Speed	1450 rpm		
1.9	Rated Current	Bidder to specify		
1.10	Efficiency	Bidder to specify		
1.11	Energy efficiency class	IE2		
1.12	Power Factor	Bidder to specify		
1.13	Frame size	132S		
1.14	Mounting Position	IM B5 (Flange)		
1.15	Degree of Protection	IP 55		
1.16	Insulation Class	F		
1.17	Duty type rating	S1		
1.18	Starting method	Variable Frequency Drive		
1.19	Direction of rotation	Both		
1.20	Method of Cooling	IC 411 (TEFC)		
1.21	Location of Terminal Box	Left (when viewed from Non drive end)		
1.22	Confirming standard	IS 12615		
<b>2</b>	<b>GEARBOX SPECIFICATIONS</b>			
2.1	Construction	Gears and pinions of planetary type made out of alloy steel in generating process, further hardened and ground to high precision and accuracy.		
2.2	Rated Torque	220 Nm		
2.3	Maximum Torque	350 Nm		
2.4	Rated Speed	240 rpm		
2.5	Gear Ratio	6.04		
2.6	Load Classification	AGMA Class III		
2.7	Service factor	Bidder to specify (Not less than 2.0)		
2.8	Mounting Position	IM B3 (Foot)		
2.9	Lubrication nipple	Should be available		

3		DIMENSIONAL DETAILS	
3.1	Dimensions as per the drawing given below.	A = 298	
3.2	All Dimensions are in mm.	B = 318	
3.3		$\varnothing D = 44.45 \text{ j6}$	
3.4		E = 356	
3.5		F = 387	
3.6		H = 171	
3.7		I = 129	
3.8		K = 823	
3.9		L = 83	
3.10		$\varnothing S = 17$	
3.11		T = 48.69	
3.12		U = 14	



4		QUALIFYING CONDITIONS AND DOCUMENTS TO BE SUBMITTED	
4.1	Only those Bidders who have supplied similar or higher capacity/ size equipment that is working satisfactorily for at least two year after commissioning should quote.	Bidder to confirm. Attach relevant copies	
4.2	Motor Datasheet	Bidder to attach along with offer	
4.3	Motor GA drawing	Bidder to attach along with offer	
4.4	Gearbox Datasheet	Bidder to attach along with offer	
4.5	Gearbox GA drawing	Bidder to attach along with offer	
4.6	Routine test reports	To be provided during supply	
4.7	Operation and Maintenance manuals	To be provided during supply	

SP2000250251

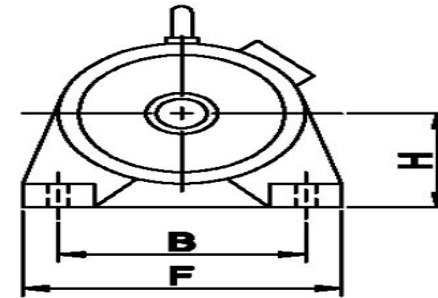
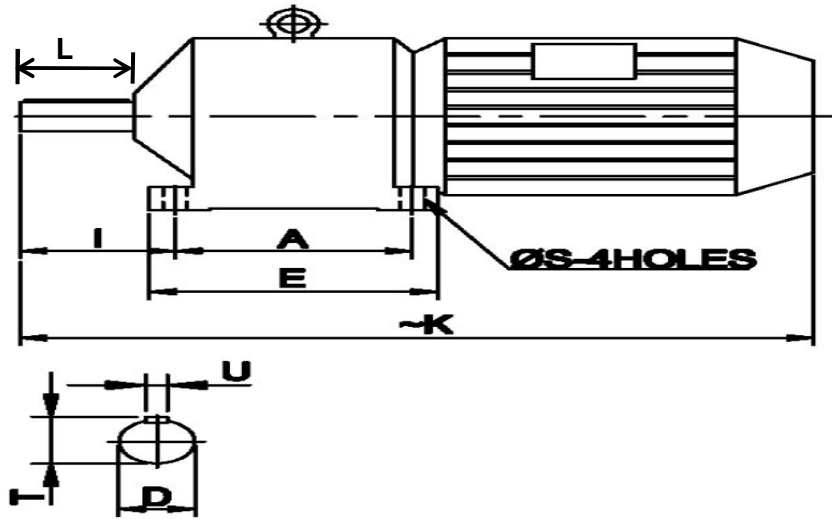
## HOT SAW/WALKING BEAM FURNACE ENTRY ROLLER CONVEYOR GEARED MOTOR

## SPECIFICATION SHEET

SI. No	SPECIFICATION	BHEL REQUIREMENT	BIDDER RESPONSE	COMMENTS
<b>1</b>	<b>MOTOR SPECIFICATIONS</b>			
1.1	Make	Bidder to specify		
1.2	Model/Part number	Bidder to specify		
1.3	Rated Power	5.5 KW		
1.4	Rated Torque	Bidder to specify		
1.5	Maximum Torque	1.6 times the rated torque		
1.6	Rated Voltage	415 V ( $\Delta$ )		
1.7	Rated Frequency	50 Hz		
1.8	Rated Speed	1450 rpm		
1.9	Rated Current	Bidder to specify		
1.10	Efficiency	Bidder to specify		
1.11	Power Factor	Bidder to specify		
1.12	Frame size	132S		
1.13	Mounting Position	IM B5 (Flange)		
1.14	Degree of Protection	IP 55		
1.15	Insulation Class	F		
1.16	Duty type rating	S5		
1.17	Cyclic Duration Factor	30%		
1.18	Starts per hour	180		
1.19	Starting method	Variable Frequency Drive		
1.20	Direction of rotation	Both		
1.21	Method of Cooling	IC 411 (TEFC)		
1.22	Location of Terminal Box	Left (when viewed from Non drive end)		
1.23	Confirming standard	IS 325		

<b>2</b>	<b>GEARBOX SPECIFICATIONS</b>			
2.1	Construction	Gears and pinions of planetary type made out of alloy steel in generating process, further hardened and ground to high precision and accuracy.		
2.2	Rated Torque	310 Nm		
2.3	Maximum Torque	495 Nm		
2.4	Rated Speed	170 rpm		
2.5	Gear Ratio	8.53		
2.6	Load Classification	AGMA Class III		
2.7	Service factor	Bidder to specify (Not less than 2.0)		
2.8	Mounting Position	IM B3 (Foot)		
2.9	Lubrication nipple	Should be available		

3		DIMENSIONAL DETAILS	
3.1	Dimensions as per the drawing given below.	A = 298	
3.2	All Dimensions are in mm.	B = 318	
3.3		$\varnothing D = 44.5 (j6)$	
3.4		E = 356	
3.5		F = 387	
3.6		H = 171	
3.7		I = 129	
3.8		K = 823	
3.9		L = 83	
3.10		$\varnothing S = 17$	
3.11		T = 48.69	
3.12		U = 14	



4		QUALIFYING CONDITIONS AND DOCUMENTS TO BE SUBMITTED	
4.1	Only those Bidders who have supplied similar or higher capacity/ size equipment that is working satisfactorily for at least two year after commissioning should quote.	Bidder to confirm. Attach relevant copies	
4.2	Motor Datasheet	Bidder to attach along with offer	
4.3	Motor GA drawing	Bidder to attach along with offer	
4.4	Gearbox Datasheet	Bidder to attach along with offer	
4.5	Gearbox GA drawing	Bidder to attach along with offer	
4.6	Routine test reports	To be provided during supply	
4.7	Operation and Maintenance manuals	To be provided during supply	
4.8	Detailed Engineering drawing of gear box	To be provided during supply	

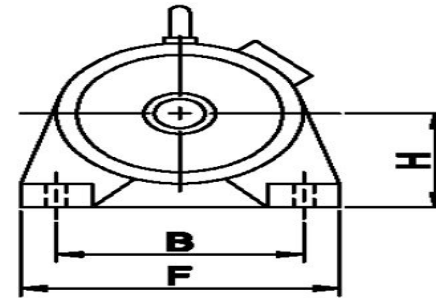
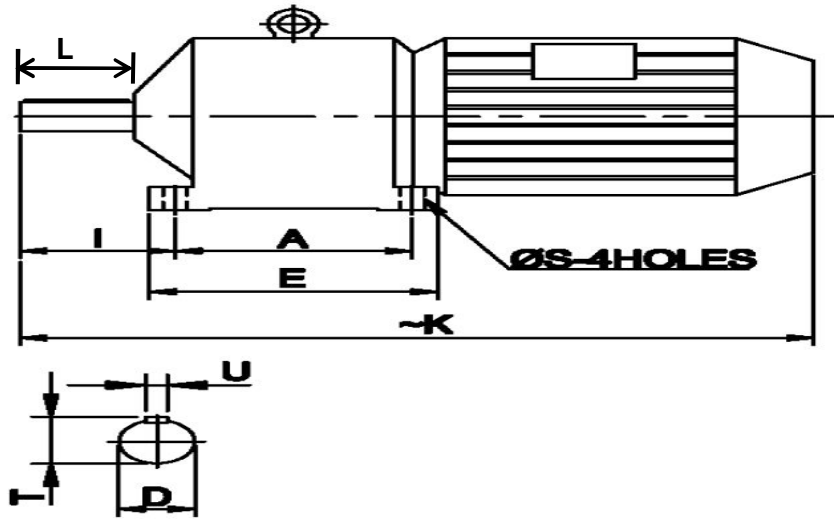
SP2000250258

## WALKING BEAM FURNACE CRT &amp; DRT GEARED MOTOR

## SPECIFICATION SHEET

SI. No	SPECIFICATION	BHEL REQUIREMENT	BIDDER RESPONSE	COMMENTS
<b>1</b>	<b>MOTOR SPECIFICATIONS</b>			
1.1	Make	Bidder to specify		
1.2	Model/Part number	Bidder to specify		
1.3	Rated Power	5.5 KW		
1.4	Rated Torque	Bidder to specify		
1.5	Maximum Torque	1.6 times the rated torque		
1.6	Rated Voltage	415 V ( $\Delta$ )		
1.7	Rated Frequency	50 Hz		
1.8	Rated Speed	1450 rpm		
1.9	Rated Current	Bidder to specify		
1.10	Efficiency	Bidder to specify		
1.11	Energy efficiency class	IE2		
1.12	Power Factor	Bidder to specify		
1.13	Frame size	132S		
1.14	Mounting Position	IM B5 (Flange)		
1.15	Degree of Protection	IP 55		
1.16	Insulation Class	F		
1.17	Duty type rating	S1		
1.18	Starting method	Variable Frequency Drive		
1.19	Direction of rotation	Both		
1.20	Method of Cooling	IC 411 (TEFC)		
1.21	Location of Terminal Box	Left (when viewed from Non drive end)		
1.22	Confirming standard	IS 12615		
<b>2</b>	<b>GEARBOX SPECIFICATIONS</b>			
2.1	Construction	Gears and pinions of planetary type made out of alloy steel in generating process, further hardened and ground to high precision and accuracy.		
2.2	Rated Torque	202 Nm		
2.3	Maximum Torque	324 Nm		
2.4	Rated Speed	260 rpm		
2.5	Gear Ratio	5.58		
2.6	Load Classification	AGMA Class III		
2.7	Service factor	Bidder to specify (Not less than 2.0)		
2.8	Mounting Position	IM B3 (Foot)		
2.9	Lubrication nipple	Should be available		

3		DIMENSIONAL DETAILS		
3.1	Dimensions as per the drawing given below.	A = 260		
3.2	All Dimensions are in mm.	B = 215		
3.3		ØD = 50		
3.4		E = 320		
3.5		F = 290		
3.6		H = 160 (-0.5)		
3.7		I = 110		
3.8		K = 900		
3.9		L = 100		
3.10		ØS = 20		
3.11		T = 54 (-0.29)		
3.12		U = 9 (h9)		



4		QUALIFYING CONDITIONS AND DOCUMENTS TO BE SUBMITTED		
4.1	Only those Bidders who have supplied similar or higher capacity/ size equipment that is working satisfactorily for at least two year after commissioning should quote.	Bidder to confirm. Attach relevant copies		
4.2	Motor Datasheet	Bidder to attach along with offer		
4.3	Motor GA drawing	Bidder to attach along with offer		
4.4	Gearbox Datasheet	Bidder to attach along with offer		
4.5	Gearbox GA drawing	Bidder to attach along with offer		
4.6	Routine test reports	To be provided during supply		
4.7	Operation and Maintenance manuals	To be provided during supply		
4.8	Detailed Engineering drawing of gear box	To be provided during supply		

SP2000250265

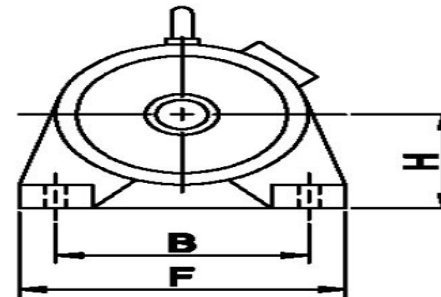
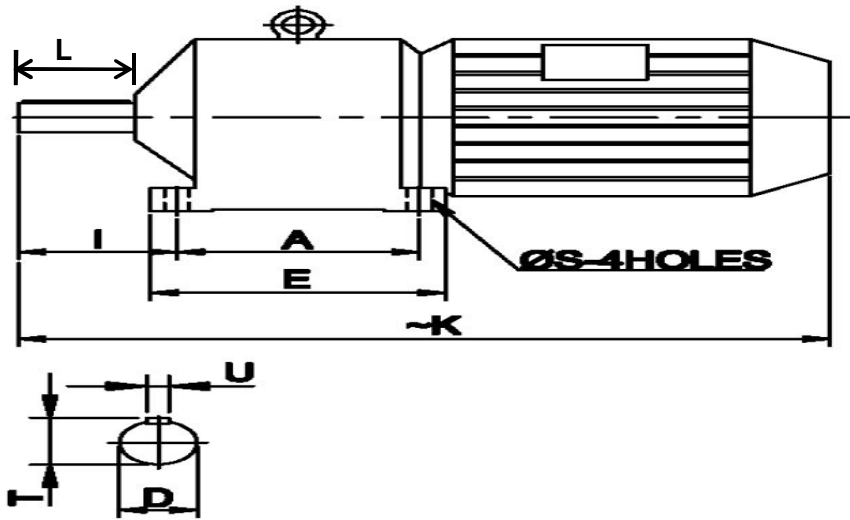
## COLD SAW ROLLER CONVEYOR GEARED MOTOR

## SPECIFICATION SHEET

SI. No	SPECIFICATION	BHEL REQUIREMENT	BIDDER RESPONSE	COMMENTS
<b>1</b>	<b>MOTOR SPECIFICATIONS</b>			
1.1	Make	Bidder to specify		
1.2	Model/Part number	Bidder to specify		
1.3	Rated Power	5.5 KW		
1.4	Rated Torque	Bidder to specify		
1.5	Maximum Torque	1.6 times the rated torque		
1.6	Rated Voltage	415 V ( $\Delta$ )		
1.7	Rated Frequency	50 Hz		
1.8	Rated Speed	1450 rpm		
1.9	Rated Current	Bidder to specify		
1.10	Efficiency	Bidder to specify		
1.11	Power Factor	Bidder to specify		
1.12	Frame size	132S		
1.13	Mounting Position	IM B5 (Flange)		
1.14	Degree of Protection	IP 55		
1.15	Insulation Class	F		
1.16	Duty type rating	S5		
1.17	Cyclic Duration Factor	30%		
1.18	Starts per hour	180		
1.19	Starting method	Variable Frequency Drive		
1.20	Direction of rotation	Both		
1.21	Method of Cooling	IC 411 (TEFC)		
1.22	Location of Terminal Box	Left (when viewed from Non drive end)		
1.23	Confirming standard	IS 325		

<b>2</b>	<b>GEARBOX SPECIFICATIONS</b>			
2.1	Construction	Gears and pinions of planetary type made out of alloy steel in generating process, further hardened and ground to high precision and accuracy.		
2.2	Rated Torque	255 Nm		
2.3	Maximum Torque	408 Nm		
2.4	Rated Speed	206 rpm		
2.5	Gear Ratio	7.04		
2.6	Load Classification	AGMA Class III		
2.7	Service factor	Bidder to specify (Not less than 2.0)		
2.8	Mounting Position	IM B3 or IM B8 (Foot)-must be suitable for both		
2.9	Lubrication nipple	Should be available		

3		DIMENSIONAL DETAILS		
3.1	Dimensions as per the drawing given below.	A = 230		
3.2	All Dimensions are in mm.	B = 250		
3.3		$\varnothing D = 50$ (k6)		
3.4		E = 280		
3.5		F = 310		
3.6		H = 160		
3.7		I = 150		
3.8		K = 762		
3.9		L = 110		
3.10		$\varnothing S = 23$		
3.11		T = 53.5		
3.12		U = 14		



4		QUALIFYING CONDITIONS AND DOCUMENTS TO BE SUBMITTED		
4.1	Only those Bidders who have supplied similar or higher capacity/ size equipment that is working satisfactorily for at least two year after commissioning should quote.	Bidder to confirm. Attach relevant copies		
4.2	Motor Datasheet	Bidder to attach along with offer		
4.3	Motor GA drawing	Bidder to attach along with offer		
4.4	Gearbox Datasheet	Bidder to attach along with offer		
4.5	Gearbox GA drawing	Bidder to attach along with offer		
4.6	Routine test reports	To be provided during supply		
4.7	Operation and Maintenance manuals	To be provided during supply		
4.8	Detailed Engineering drawing of gear box	To be provided during supply		

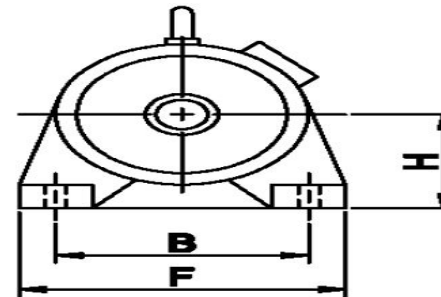
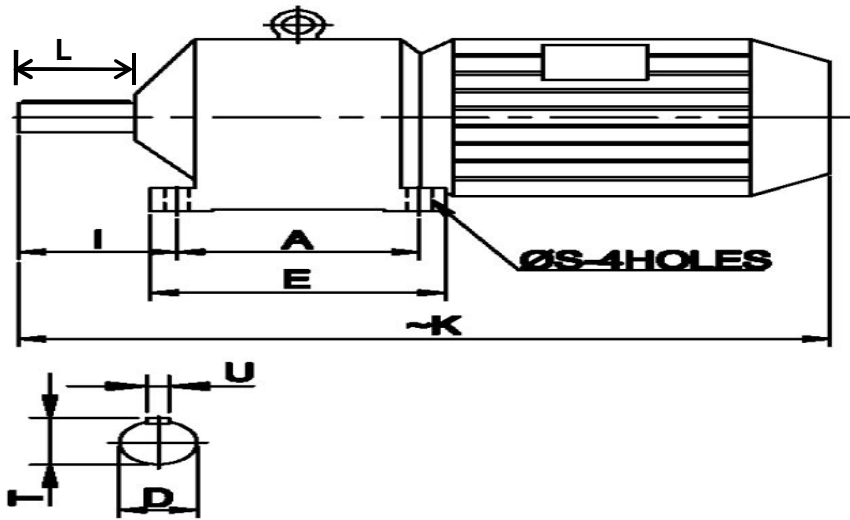
SP2000250272

**COLD SAW ROLLER CONVEYOR GEARED MOTOR(HELICAL)****SPECIFICATION SHEET**

SI. No	SPECIFICATION	BHEL REQUIREMENT	BIDDER RESPONSE	COMMENTS
<b>1</b>	<b>MOTOR SPECIFICATIONS</b>			
1.1	Make	Bidder to specify		
1.2	Model/Part number	Bidder to specify		
1.3	Rated Power	5.5 KW		
1.4	Rated Torque	Bidder to specify		
1.5	Maximum Torque	1.6 times the rated torque		
1.6	Rated Voltage	415 V ( $\Delta$ )		
1.7	Rated Frequency	50 Hz		
1.8	Rated Speed	1450 rpm		
1.9	Rated Current	Bidder to specify		
1.10	Efficiency	Bidder to specify		
1.11	Power Factor	Bidder to specify		
1.12	Frame size	132S		
1.13	Mounting Position	IM B5 (Flange)		
1.14	Degree of Protection	IP 55		
1.15	Insulation Class	F		
1.16	Duty type rating	S5		
1.17	Cyclic Duration Factor	30%		
1.18	Starts per hour	180		
1.19	Starting method	Variable Frequency Drive		
1.20	Direction of rotation	Both		
1.21	Method of Cooling	IC 411 (TEFC)		
1.22	Location of Terminal Box	Left (when viewed from Non drive end)		
1.23	Confirming standard	IS 325		

<b>2</b>	<b>GEARBOX SPECIFICATIONS</b>			
2.1	Construction	Gears and pinions of Helical type made out of alloy steel in generating process, further hardened and ground to high precision and accuracy.		
2.2	Rated Torque	255 Nm		
2.3	Maximum Torque	408 Nm		
2.4	Rated Speed	206 rpm		
2.5	Gear Ratio	7.04		
2.6	Load Classification	AGMA Class III		
2.7	Service factor	Bidder to specify (Not less than 2.0)		
2.8	Mounting Position	IM B3 or IM B8 (Foot)-must be suitable for both		
2.9	Lubrication nipple	Should be available		

3		DIMENSIONAL DETAILS		
3.1	Dimensions as per the drawing given below.	A = 230		
3.2	All Dimensions are in mm.	B = 250		
3.3		$\varnothing D = 50$ (k6)		
3.4		E = 280		
3.5		F = 310		
3.6		H = 160		
3.7		I = 150		
3.8		K = 762		
3.9		L = 110		
3.10		$\varnothing S = 23$		
3.11		T = 53.5		
3.12		U = 14		



4		QUALIFYING CONDITIONS AND DOCUMENTS TO BE SUBMITTED		
4.1	Only those Bidders who have supplied similar or higher capacity/ size equipment that is working satisfactorily for at least two year after commissioning should quote.	Bidder to confirm. Attach relevant copies		
4.2	Motor Datasheet	Bidder to attach along with offer		
4.3	Motor GA drawing	Bidder to attach along with offer		
4.4	Gearbox Datasheet	Bidder to attach along with offer		
4.5	Gearbox GA drawing	Bidder to attach along with offer		
4.6	Routine test reports	To be provided during supply		
4.7	Operation and Maintenance manuals	To be provided during supply		
4.8	Detailed Engineering drawing of gear box	To be provided during supply		